



Schlumberger

DUAL INDUCTION LATERAL LOG  
WITH LINEAR CORRELATION LOG

COUNTY <b>PROWERS</b>		COMPANY <b>KISSINGER PETROLEUM CORPORATION</b>	
FIELD or LOCATION <b>WILDCAT</b>		WELL <b>NO. 6-18 KISSINGER-HOFFMAN</b>	
WELL <b>HOFFMAN</b>		FIELD <b>WILDCAT</b>	
COMPANY <b>KISSINGER PETRO.</b>		COUNTY <b>PROWERS</b>	STATE <b>COLORADO</b>
Location, Sec. <b>18</b> Twp. <b>25S</b> Rge. <b>44W</b>		Other Services: <b>CNL FDC-CR</b>	
Permanent Datum: <b>G.L.</b> Elev. <b>3904</b>		Elev. <b>K.B. 3914</b>	
Log Measured From <b>KB</b> , <b>10</b> Ft. Above Perm. Datum		D.F. <b>-</b>	
Drilling Measured From <b>KB</b>		G.L. <b>3904</b>	
Date <b>6-5-74</b>	Run No. <b>ONE</b>	RECEIVED	
Depth-Driller <b>5200</b>	Depth-Logger <b>5190</b>	JUN 20 1974	
Btm. Log Interval <b>5187</b>	Top Log Interval <b>331</b>	Casing-Driller <b>8-5/8 @ 331</b>	
Casing-Logger <b>331</b>	Bit Size <b>7-7/8</b>	Type Fluid in Hole <b>FCM</b>	
Fluid Level <b>FULL</b>	Dens. <b>9.5</b>	Visc. <b>50</b>	
pH <b>-</b>	Fluid Loss <b>-</b>	Source of Sample <b>FLOW LINE</b>	
Rm @ Meas. Temp. <b>1.72 @ 80 °F</b>	Rmf @ Meas. Temp. <b>1.37 @ 80 °F</b>	Rmc @ Meas. Temp. <b>0.95 @ 116 °F</b>	
Rm @ Meas. Temp. <b>-</b>	Rmf @ Meas. Temp. <b>-</b>	Rmc @ Meas. Temp. <b>-</b>	
Rm @ BHT <b>1.18 @ 116 °F</b>	Rmf @ BHT <b>-</b>	Rmc @ BHT <b>-</b>	
Time Since Circ. <b>3 HOURS</b>	Max. Rec. Temp. <b>116 °F</b>	Equip. Location <b>5657 F.M.</b>	
Recorded By <b>MC BRIDE</b>	Witnessed By <b>BUD</b>		

The well name, location and borehole reference data were furnished by the customer.

## CHANGES IN MUD TYPE OR ADDITIONAL SAMPLES

Date	Sample No.	Type Log	Depth	Scale Up Hole	Scale Down Hole
Depth - Driller					
Type Fluid in Hole					
Dens.	Visc.				
Fluid Loss					
Source of Sample					
Rm @ Meas. Temp.	@ °F	@ °F	@ °F		
Rmf @ Meas. Temp.	@ °F	@ °F	@ °F		
Rmc @ Meas. Temp.	@ °F	@ °F	@ °F		
Source: Rmf	Rmc				
Rm @ BHT	@ °F	@ °F	@ °F		
Rmf @ BHT	@ °F	@ °F	@ °F		
Rmc @ BHT	@ °F	@ °F	@ °F		

## EQUIPMENT DATA

Run No. **ONE**  
Panel No. **C-144**  
Cart. No. **B-166**  
Sonde No. **DB-51**  
Mem. Panel No. **B-258**  
G.R. Cart No. **-**  
G.R. Panel No. **-**  
TTR No. **-**  
Cent. Device **USED**  
Stand off - Inches **1-1/2**  
Time Const. - Sec. **-**  
Speed - F.P.M. **-**

## REMARKS

Service Order No. **69700**BEST IMAGE  
AVAILABLE

- ☐ Surface determined sonde errors used for 6FF40.  
☐ 6FF40 sonde error corrected for \_\_\_\_\_ inch  
borehole signal at Rm = \_\_\_\_\_  
☒ 6FF40 zero set in hole at depth of **5180** feet.

## CALIBRATION DATA

CALIBRATION:	BACKGND.	SOURCE	GALV. INCR.	SENS. TAP	SENS. TAP	TIME
	CPS.	CPS.	DIVISION	(FOR CAL.)	(RECOR.)	CONST.
GAMMA RAY:						

All interpretations are opinions based on inferences from electrical or other measurements and we cannot, and do not guarantee the accuracy or correctness of any interpretations, and we shall not, except in the case of gross or willful negligence on our part, be liable or responsible for any loss, costs, damages or expenses incurred or sustained by anyone resulting from any interpretation made by any of our officers, agents or employees. These interpretations are also subject to Clause 7 of our General Terms and Conditions as set out in our current Price Schedule.



# DEEP INDUCTION LOG

1000

500

0

RESISTIVITY  
OHMS. M<sup>2</sup>/M

## DEEP INDUCTION LOG

0 50

0 500

## AVERAGED LATEROLOG - 8

0 50

0 500

0 AMP. AVE. LATEROLOG - 8 0

BEST IMAGE  
AVAILABLE

-  $\frac{120}{MV}$  +

0300

Casing

0040

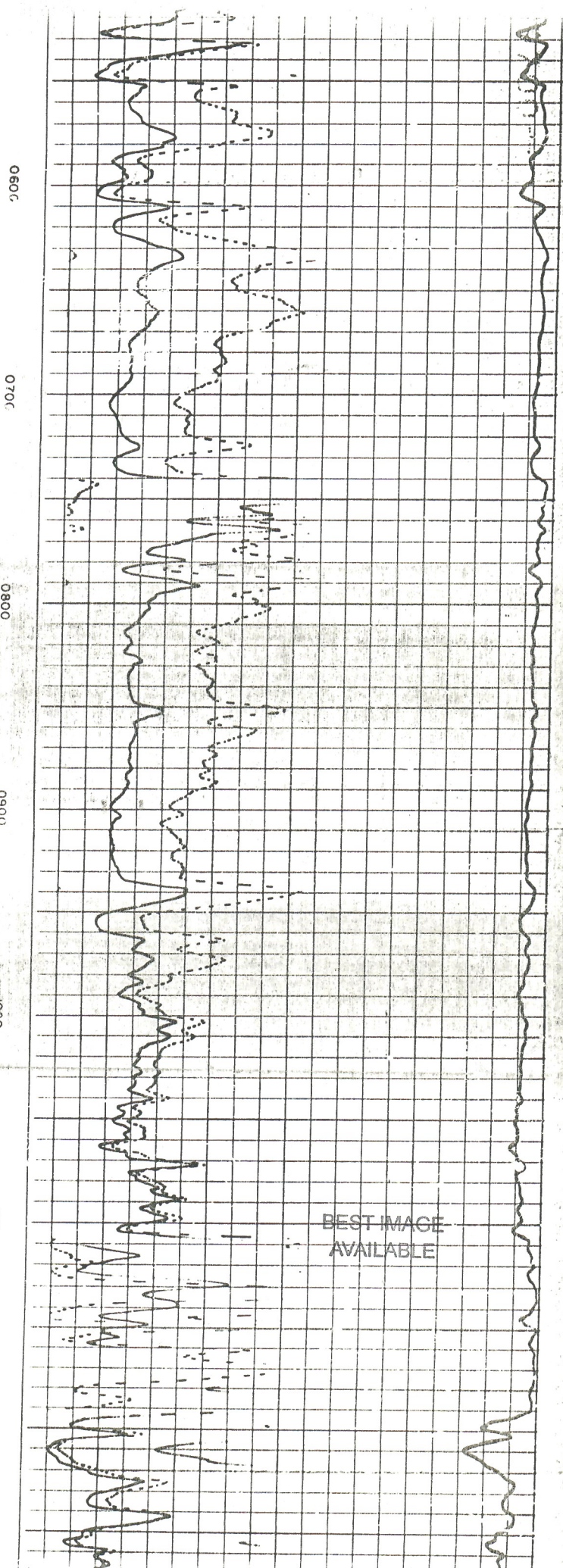
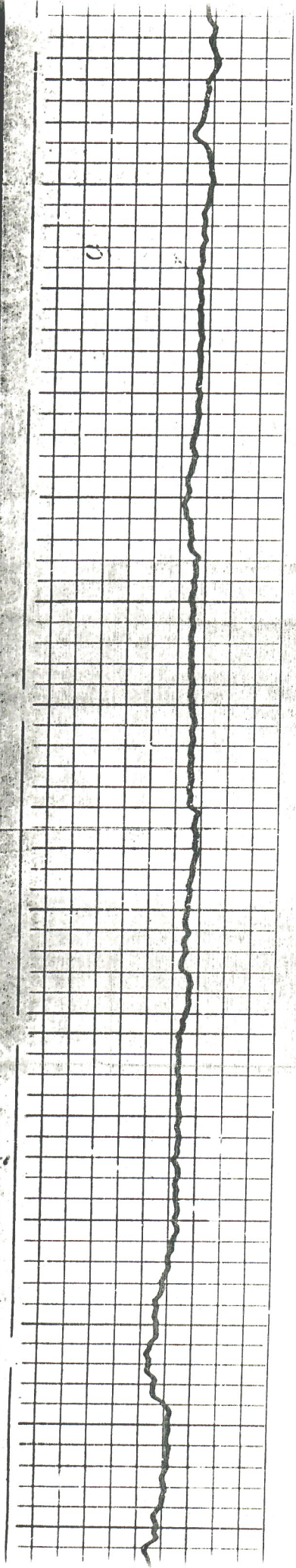
0050

0060

0070

0080





0600

0700

0800

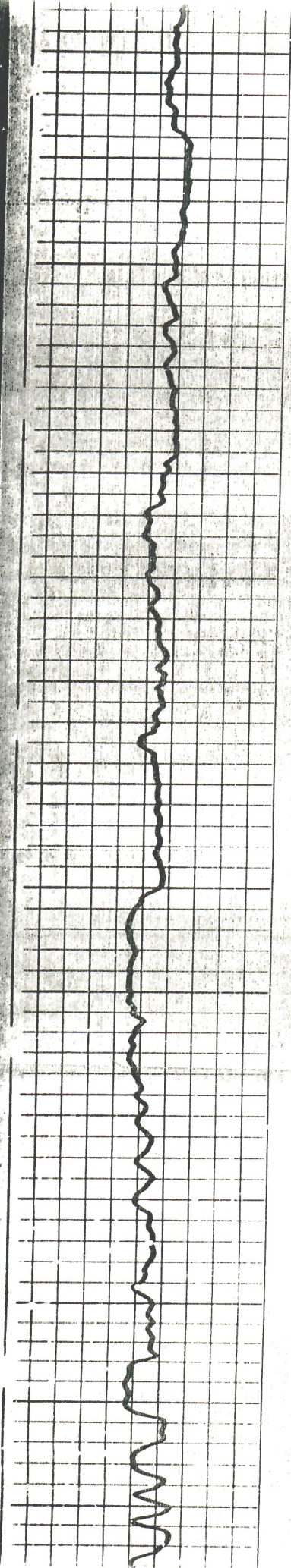
0900

1000

1100

1200





1200

1300

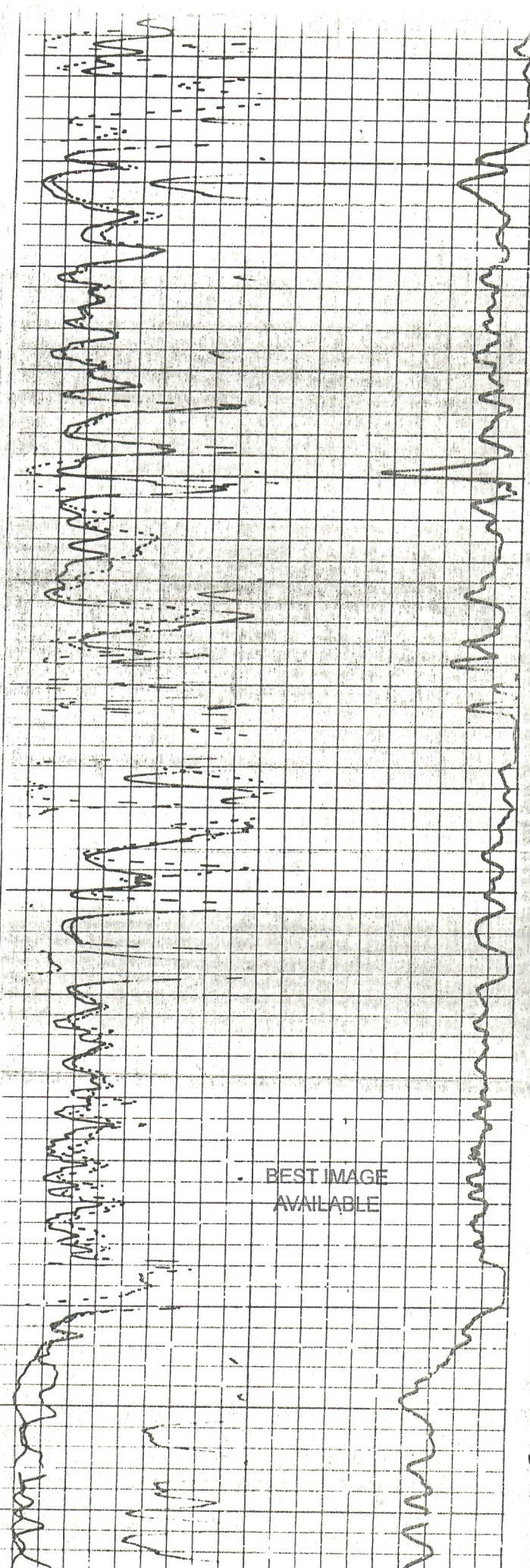
1400

1500

1600

1700

1800



BEST IMAGE  
AVAILABLE