



# FORMATION TEST REPORT

**RECEIVED**

NOV 15 1991

COLO. OIL & GAS CONS. COMM.



Home Office:

Wichita, Kansas 67201

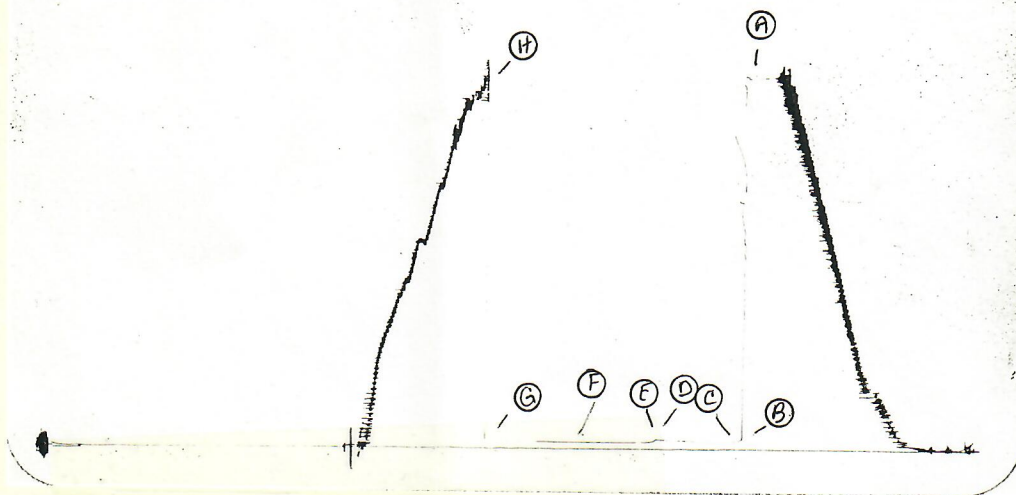
P.O. Box 1599

Phone (316) 262-5861

BEST IMAGE  
AVAILABLE

TKT 17196  
I

\*13630 DST 1

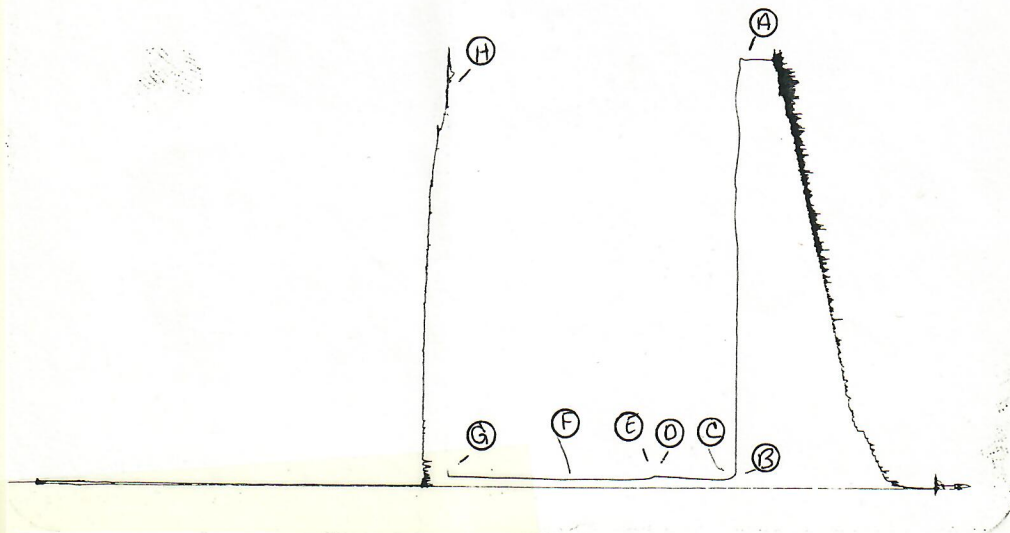


Inside Recorder

BEST IMAGE  
AVAILABLE

TKT 17196  
①

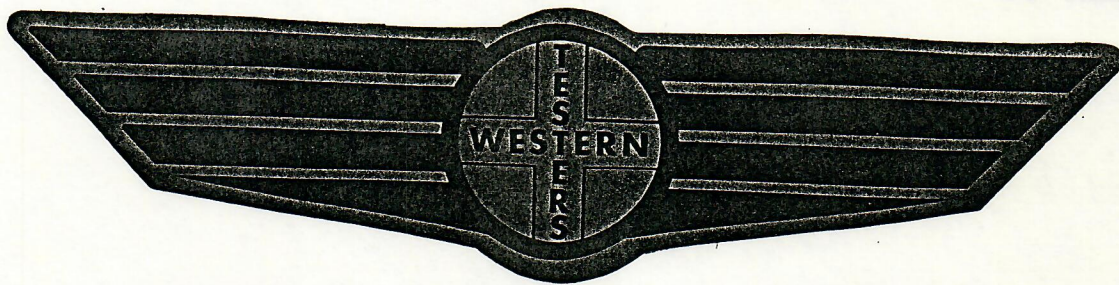
1562 DST 1



Outside Recorder



# FORMATION TEST REPORT



Home Office:

Wichita, Kansas 67201

P.O. Box 1599

Phone **1 - 800-688-7021**



WESTERN TESTING CO. INC.  
SUBSURFACE PRESSURE SURVEY

DATE : 7-6-91  
CUSTOMER : SINCLAIR OIL CORPORATION  
WELL : 7-11 TEST: 1  
ELEVATION : 3831 GR  
SECTION : 11  
RANGE : 44W COUNTY : PROWERS  
GAUGE SN# : 1562 RANGE : 3900  
TICKET : 17196  
LEASE : HADSON-HECK  
GEOLOGIST : ?  
FORMATION :  
TOWNSHIP : 25S  
STATE : COLORADO  
CLOCK : 12

INTERVAL FROM : 4554 TO : 4589 TOTAL DEPTH : 4589  
DEPTH OF SELECTIVE ZONE :  
PACKER DEPTH : 4549 SIZE : 6.63  
PACKER DEPTH : 4554 SIZE : 6.63  
PACKER DEPTH : SIZE :  
PACKER DEPTH : SIZE :

DRILLING CON. : MURFIN RIG 22  
MUD TYPE : CHEMICAL VISCOSITY : 42  
WEIGHT : 9.0 WATER LOSS (CC) : 7.4  
CHLORIDES (PPM) : 500  
JARS-MAKE : W.T.C. SERIAL NUMBER : 401  
DID WELL FLOW ? : NO REVERSED OUT ? : NO

DRILL COLLAR LENGTH : 626 FT I.D. inch : 2.25  
WEIGHT PIPE LENGTH : 0 FT I.D. inch : 0.00  
DRILL PIPE LENGTH : 3896 FT I.D. inch : 3.80  
TEST TOOL LENGTH : 32 FT TOOL SIZE : 5.50  
ANCHOR LENGTH : 35 FT ANCHOR SIZE : 5.50  
SURFACE CHOKE SIZE : .75 IN BOTTOM CHOKE SIZE : .75  
MAIN HOLE SIZE : 7.875 IN TOOL JOINT SIZE : 4.5XH

BLOW COMMENT #1 : INITIAL FLOW PERIOD VERY WEAK SURFACE BLOW  
BLOW COMMENT #2 : FOR 2 MINUTES THEN DEAD.  
BLOW COMMENT #3 : FINAL FLOW PERIOD NO BLOW.  
BLOW COMMENT #4 :



COMPANY : SINCLAIR OIL CORPORATION  
WELL : 7-11  
GAUGE # : 1562  
DATE : 6/ 7/91

FIELD : HADSON-HECK  
JOB # : 17196  
DEPTH : 4589  
TEST :

DATA No.	REAL TIME HR:MN:SS	ELAPSE TIME DELTA HOURS	PRESSURE PSIG	TEMP DEG F	DELTA P Pi-P(i-1)
INITIAL FLOW PERIOD					
2	11:15: 0	0.000	49.000	128.00	
3	11:19:59	0.083	49.000	128.00	0.000
INITIAL SHUT-IN PERIOD					
4	11:22:59	0.133	49.000	128.00	0.000
5	11:25:59	0.183	49.000	128.00	0.000
6	11:28:59	0.233	49.000	128.00	0.000
7	11:31:59	0.283	49.000	128.00	0.000
8	11:34:59	0.333	49.000	128.00	0.000
9	11:37:59	0.383	50.000	128.00	0.000
10	11:40:59	0.433	51.000	128.00	1.000
11	11:43:59	0.483	52.000	128.00	1.000
12	11:46:59	0.533	53.000	128.00	1.000
13	11:49:59	0.583	54.000	128.00	1.000
14	11:52:59	0.633	55.000	128.00	1.000
15	11:55:59	0.683	57.000	128.00	1.000
16	11:58:59	0.733	58.000	128.00	2.000
17	12: 1:59	0.783	59.000	128.00	1.000
18	12: 4:59	0.833	60.000	128.00	1.000
19	12: 7:59	0.883	61.000	128.00	1.000
20	12:10:59	0.933	62.000	128.00	1.000
21	12:13:59	0.983	63.000	128.00	1.000
22	12:16:59	1.033	63.000	128.00	1.000
FINAL FLOW PERIOD					
23	12:18: 0	1.050	48.000	128.00	0.000
24	12:21:59	1.117	48.000	128.00	-15.000
25	12:27: 0	1.200	48.000	128.00	0.000
26	12:31:59	1.283	48.000	128.00	0.000
27	12:36:59	1.367	48.000	128.00	0.000
28	12:42: 0	1.450	48.000	128.00	0.000
29	12:46:59	1.533	48.000	128.00	0.000
30	12:51:59	1.617	48.000	128.00	0.000
31	12:57: 0	1.700	48.000	128.00	0.000
32	13: 1:59	1.783	48.000	128.00	0.000
33	13: 6:59	1.867	48.000	128.00	0.000
34	13:12: 0	1.950	48.000	128.00	0.000
35	13:16:59	2.033	48.000	128.00	0.000
FINAL SHUT-IN PERIOD					
36	13:19:59	2.083	48.000	128.00	0.000
37	13:22:59	2.133	48.000	128.00	0.000
38	13:25:59	2.183	48.000	128.00	0.000
39	13:28:59	2.233	48.000	128.00	0.000
40	13:31:59	2.283	48.000	128.00	0.000
41	13:34:59	2.333	48.000	128.00	0.000
42	13:37:59	2.383	49.000	128.00	0.000
43	13:40:59	2.433	50.000	128.00	1.000
44	13:43:59	2.483	51.000	128.00	1.000
45	13:46:59	2.533	51.000	128.00	0.000
46	13:49:59	2.583	52.000	128.00	1.000
47	13:52:59	2.633	52.000	128.00	0.000
48	13:55:59	2.683	52.000	128.00	0.000



COMPANY : SINCLAIR OIL CORPORATION  
WELL : 7-11  
GAUGE # : 1562  
DATE : 6/ 7/91

FIELD : HADSON-HECK  
JOB # : 17196  
DEPTH : 4589  
TEST :

DATA No.	REAL TIME HR:MN:SS	ELAPSE TIME DELTA HOURS	PRESSURE PSIG	TEMP DEG F	DELTA P Pi-P(i-1)
49	13:58:59	2.733	53.000	128.00	1.000
50	14: 1:59	2.783	53.000	128.00	0.000
51	14: 4:59	2.833	53.000	128.00	0.000
52	14: 7:59	2.883	53.000	128.00	0.000
53	14:10:59	2.933	53.000	128.00	0.000
54	14:13:59	2.983	53.000	128.00	0.000
55	14:16:59	3.033	54.000	128.00	0.000
56	14:19:59	3.083	54.000	128.00	1.000
57	14:22:59	3.133	55.000	128.00	0.000
58	14:25:59	3.183	56.000	128.00	1.000
59	14:28:59	3.233	57.000	128.00	1.000
60	14:31:59	3.283	57.000	128.00	1.000
61	14:34:59	3.333	57.000	128.00	0.000
62	14:37:59	3.383	58.000	128.00	0.000
63	14:40:59	3.433	58.000	128.00	1.000
64	14:43:59	3.483	58.000	128.00	0.000
65	14:46:59	3.533	58.000	128.00	0.000

WESTERN TESTING CO. INC.

# FLUID SAMPLE REPORT

Date : 7-6-91 Ticket No. : 17196

Company : SINCLAIR OIL CORPORATION

Well Name & No. : HADSON-HECK 7-11

DST No. 1

County : PROWERS State : COLORADO

Sampler No. : 201 Test Interval : 4554-4589

=====

Pressure in Sampler	0	PSIG	BHT	128	Deg F
---------------------	---	------	-----	-----	-------

Total Volume of Sampler	: 2500	cc
-------------------------	--------	----

Total Volume of Sample	: 1700	cc
------------------------	--------	----

Oil:	cc
------	----

Water:	cc
--------	----

Mud: 1700	cc
-----------	----

Gas: 10.71cu	ft
--------------	----

Other:	cc
--------	----

=====

## RESITIVITY

Drilling Mud	@	F	Chloride Content	ppm
--------------	---	---	------------------	-----

Mud Pit Sample 5.5	@	70 F	Chloride Content	1650 ppm
--------------------	---	------	------------------	----------

Gas/Oil Ratio	Gravity	API @	Deg F
---------------	---------	-------	-------

Where was sample drained ON LOCATION

Remarks:



RECOVERED : 1 FT OF: DRILLING MUD W/SPOTS OF OIL

Total Barrels Fluid = 0.00  
Total Fluid Prod Rate = 0.11 BFPD  
Indicated Wtr Rate = 0.01 BWPD

REMARK 1 :  
REMARK 2 : READ OUTSIDE CHART  
REMARK 3 :  
REMARK 4 :

SET PACKER(S) : 11:15 P.M.

WELL TEMPERATURE : 128

TIME STARTED OFF BOTTOM : 3:20 A.M.

INITIAL HYDROSTATIC PRESSURE

INITIAL FLOW PERIOD MIN: 5

INITIAL CLOSED IN PERIOD MIN: 57

FINAL FLOW PERIOD MIN: 60

FINAL CLOSED IN PERIOD MIN: 90

FINAL HYDROSTATIC PRESSURE

(A) 2209

(B) 49

(D) 63

(E) 48

(G) 58

(H) 2191

PSI TO (C) : 49

PSI TO (F) : 48



WESTERN TESTING CO. INC.  
WICHITA-KANSAS

Pressure Transient Report  
-----

COMPANY : SINCLAIR OIL CORPORATION  
RIG : PROWERS-COLORADO  
FIELD : HADSON-HECK  
WELL : 7-11  
DATE : 7-6-91  
GAUGE NO : 1562

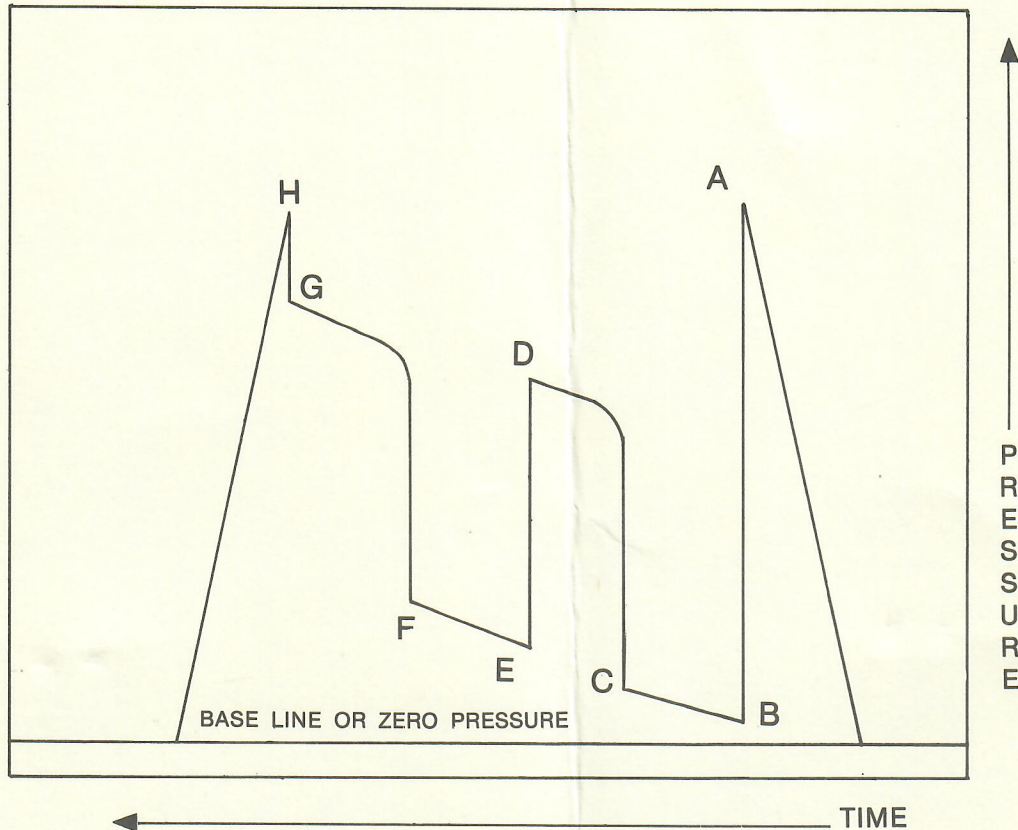
OPERATIONAL COMMENTS

READ OUTSIDE CHART

### COMPANY TERMS

Western Testing Co., Inc. shall not be liable for damages of any kind to the property or personnel of the one for whom a test is made or for any loss suffered or sustained directly or indirectly through the use of its equipment, of its statements or opinion concerning the results of any test. Tools lost or damaged in the hole shall be paid at cost by the party for whom the test is made.

### AK-1 Recorders



A - Initial Hydrostatic

B - First Initial Flow

C - First Final Flow

D - Initial Shut-In

E - Second Initial Flow

F - Second Final Flow

G - Final Shut-In

H - Final Hydrostatic