



FORM F-106

80-1003



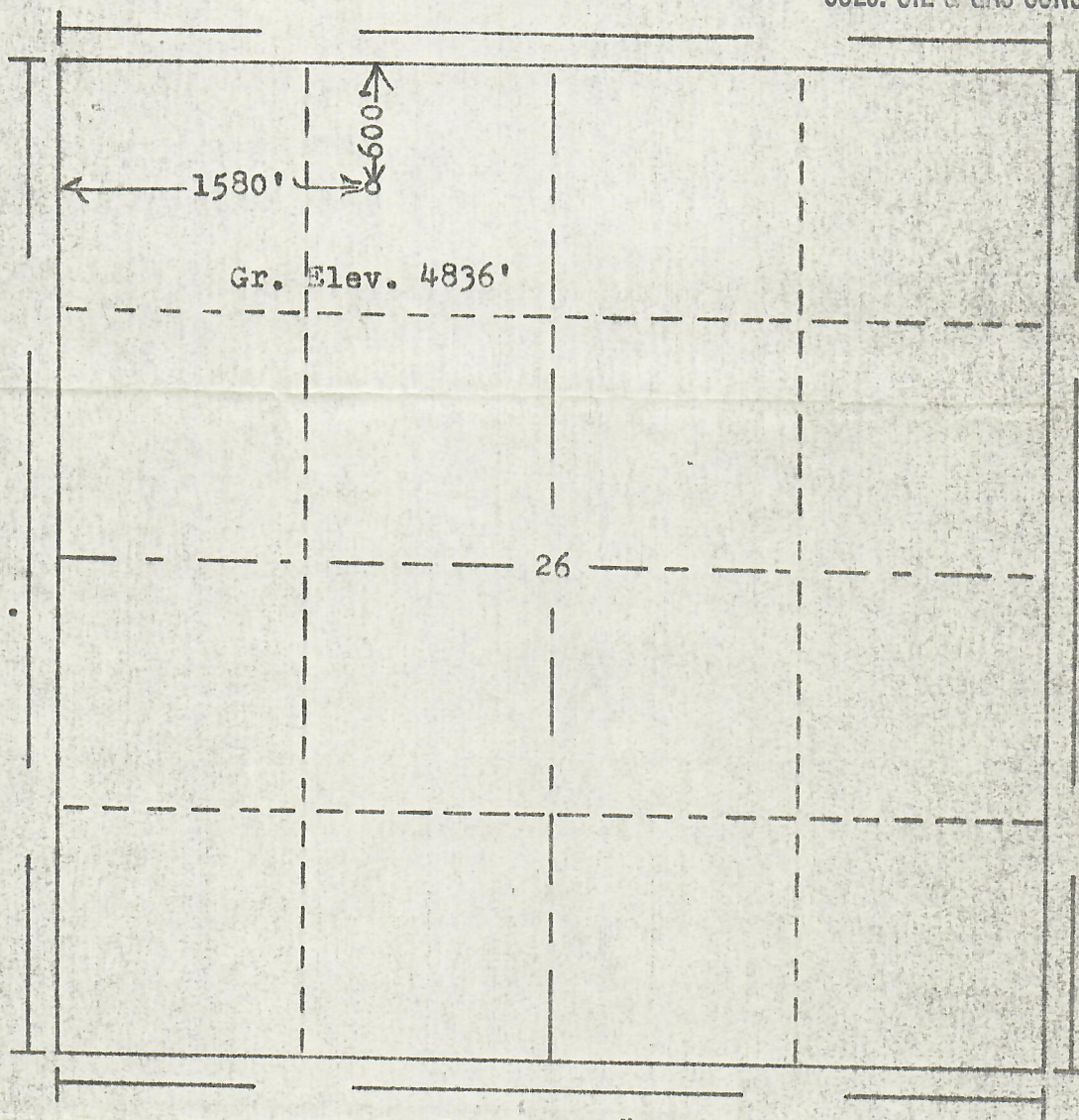
00355303

ED

AUG 14 1980

R. 56W

COLO. OIL & GAS CONS. COMM.



Scale... 1" = 1000'

Powers Elevation of Denver, Colorado
has in accordance with a request from Mr. Nylund
for J.W. Nylund
determined the location of No. 1 Kejr
to be 600' FN & 1580' FW Section 26 Township 3S
Range 56W of the 6th Principal Meridian
Washington County, Colorado

I hereby certify that this plat is an
accurate representation of a correct
survey showing the location of

Date: 8-9-80

Brian J. Homan
Licensed Land Surveyor No. 2853
State of Colorado