

LEGEND:

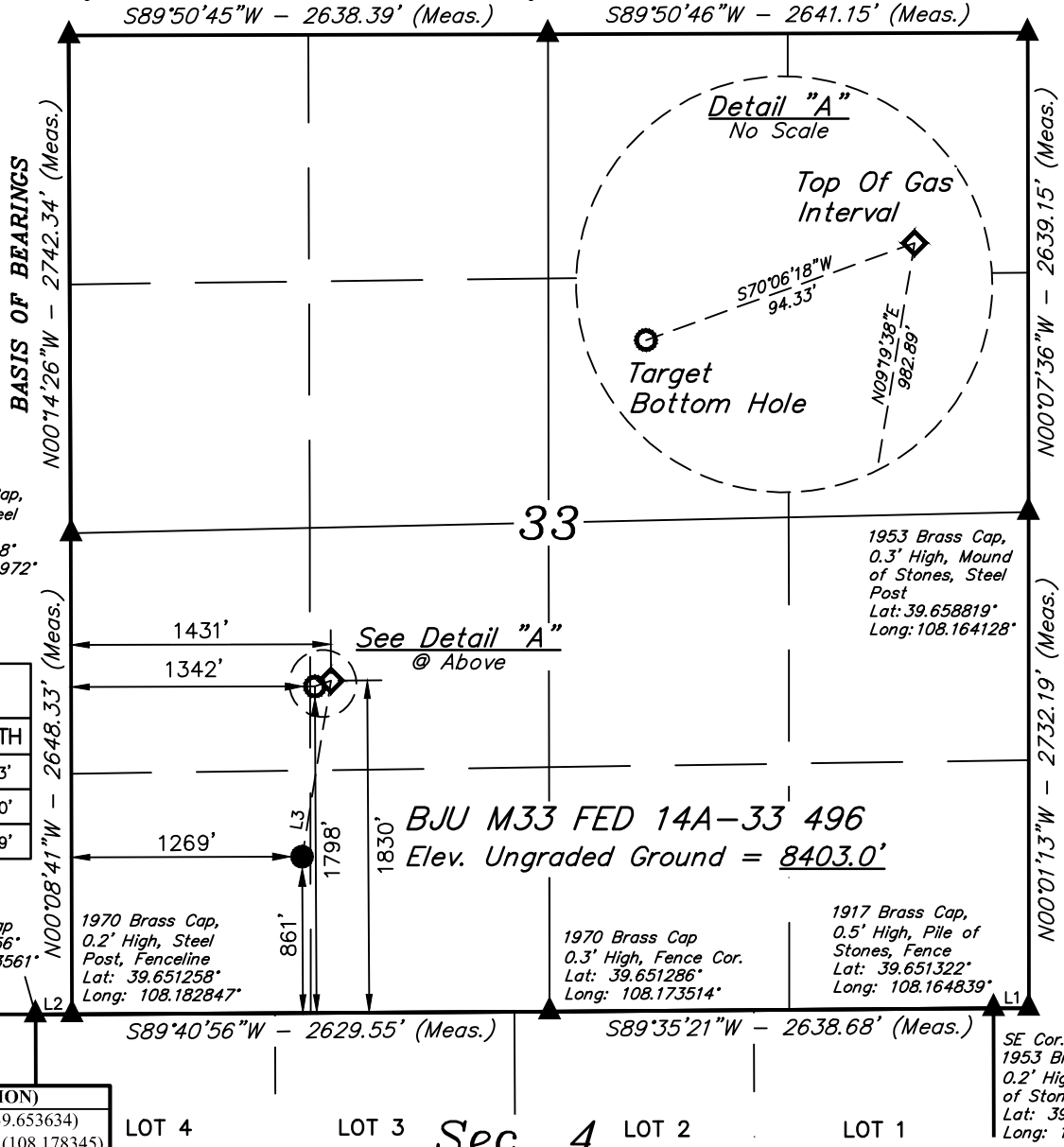
- = PROPOSED WELLHEAD.
- ◆ = TOP OF GAS INTERVAL.
- = TARGET BOTTOM HOLE.
- ▲ = SECTION CORNERS LOCATED. (NAD 83)
- △ = SECTION CORNERS RE-ESTABLISHED. (Not Set on Ground.) (NAD 83)

T4S, R96W, 6th P.M.

1970 Brass Cap,
0.2' High, Mound
of Stones
Lat: 39.666053°
Long: 108.182875°

1970 Brass Cap,
0.7' High, Mound
of Stones
Lat: 39.666058°
Long: 108.173508°

1953 Brass Cap,
0.9' High, Steel
Post
Lat: 39.666061°
Long: 108.164131°



NAD 83 (SURFACE LOCATION)

LATITUDE = 39°39'13.08" (39.653634)
LONGITUDE = 108°10'42.04" (108.178345)

NAD 27 (SURFACE LOCATION)

LATITUDE = 39°39'13.17" (39.653658)
LONGITUDE = 108°10'39.75" (108.177708)

UTM COORD.:NAD 27/ZONE 12

N: 14412425.16 E: 2434861.89

NAD 83 (TOP OF GAS INTERVAL)

LATITUDE = 39°39'22.66" (39.656294)
LONGITUDE = 108°10'39.98" (108.177773)

NAD 27 (TOP OF GAS INTERVAL)

LATITUDE = 39°39'22.75" (39.656319)
LONGITUDE = 108°10'37.69" (108.177135)

UTM COORD.:NAD 27/ZONE 12

N: 14413399.24 E: 2434992.54

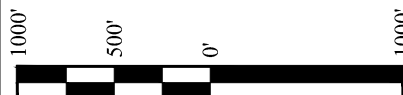
LOT 4

LOT 3

Sec. 4

LOT 2

LOT 1



NAD 83 (TARGET BOTTOM HOLE)

LATITUDE = 39°39'22.34" (39.656207)
LONGITUDE = 108°10'41.12" (108.178088)

NAD 27 (TARGET BOTTOM HOLE)

LATITUDE = 39°39'22.43" (39.656231)
LONGITUDE = 108°10'38.82" (108.177451)

UTM COORD.:NAD 27/ZONE 12

N: 14413364.55 E: 2434904.83

CERTIFICATE

THIS IS TO CERTIFY THAT THE ABOVE PLAT WAS PREPARED AND THE LOCATION AS SHOWN WAS STAKED ON THE GROUND FROM FIELD NOTES OF ACTUAL SURVEYS MADE BY ME OR UNDER MY SUPERVISION AND THAT THE SAME ARE TRUE AND CORRECT TO THE BEST OF MY KNOWLEDGE AND BELIEF.

REGISTERED LAND SURVEYOR
REGISTRATION NO. 180
STATE OF COLORADO 61593-20

BASIS OF BEARINGS

BEARINGS ARE A BASED ASSUMPTION THAT THE WEST LINE OF THE NORTHWEST 1/4 OF SECTION 33 BEARS N00°14'26"W. MONUMENTS DESCRIBED HEREON.

BASIS OF ELEVATION

BENCH MARK (H79) LOCATED IN THE NE 1/4 OF SECTION 35, T4S, R96W, 6th P.M., TAKEN FROM THE BULL FORK, QUADRANGLE, COLORADO, 7.5 MINUTE SERIES (TOPOGRAPHIC MAP) PUBLISHED BY THE UNITED STATES DEPARTMENT OF THE INTERIOR, GEOLOGICAL SURVEY. SAID ELEVATION IS MARKED AS BEING 8535 FEET.

UELS, LLC

Corporate Office * 85 South 200 East
Vernal, UT 84078 * (435) 789-1017



Caerus Oil & Gas LLC

BJU M33 FED 14A-33 496
SW 1/4 SW 1/4, SECTION 33, T4S, R96W, 6th P.M.
GARFIELD COUNTY, COLORADO

SURVEYED BY	DAYTON SLAUGH	09-16-19	SCALE
DRAWN BY	M.D.	01-03-20	1" = 1000'

WELL LOCATION PLAT