

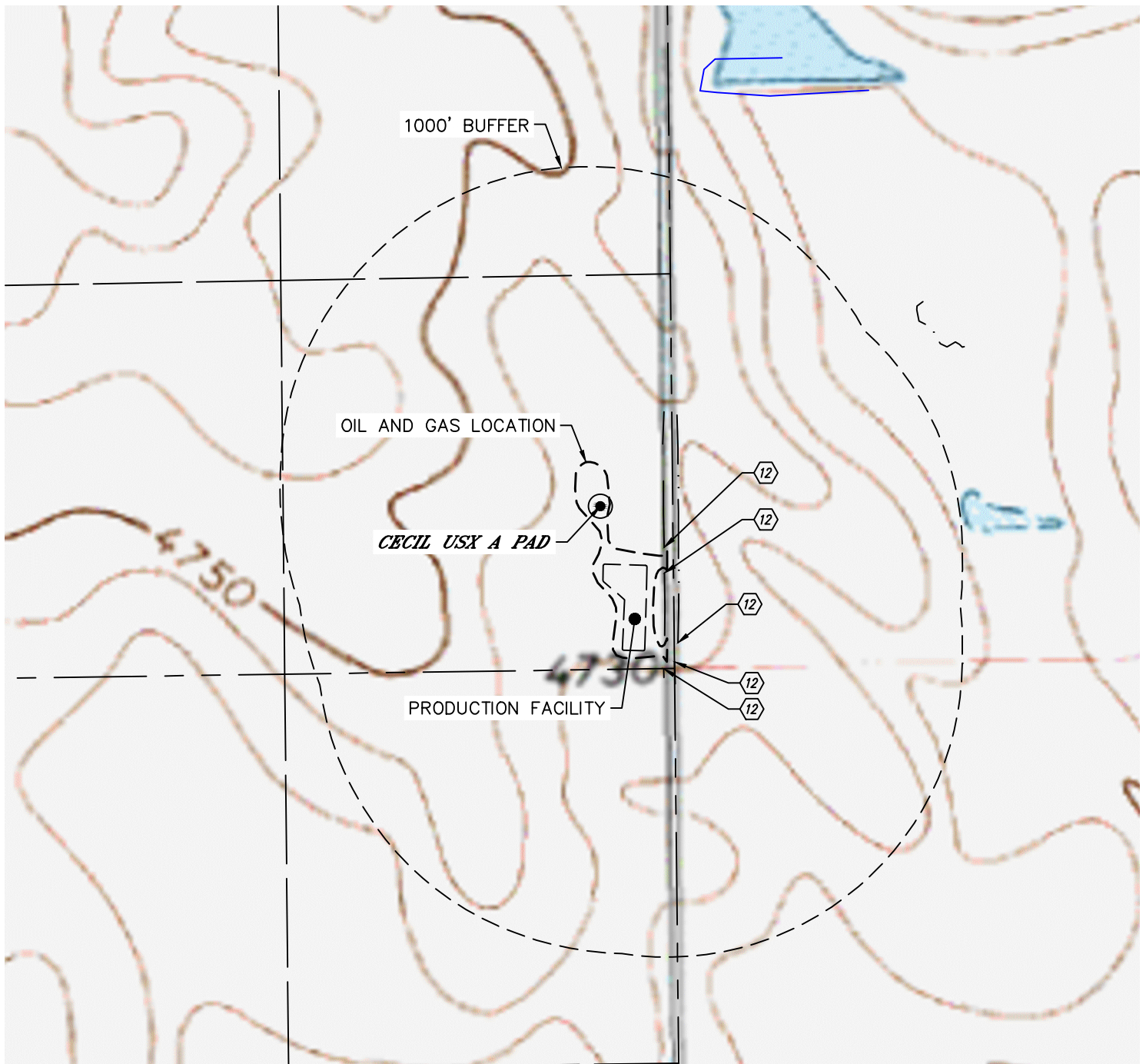


Lat40°, Inc. 6250 W. 10th Street, Unit 2, Greeley, CO 970-515-5294

HYDROLOGY MAP

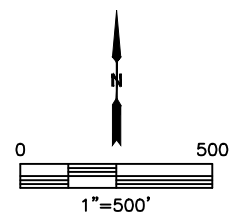
CECIL USX A01-65-1HN MULTI

SECTION: 1
TOWNSHIP: 6N
RANGE: 64W
6TH. P.M.
WELD COUNTY, CO



DISTANCES MEASURED FROM THE EDGE OF THE OIL AND GAS LOCATION.

12 BORROW DITCH 12' NE, 14' NW, 25' SW, 26' & 37' E



DATE: 8/7/2019
PROJECT#: 2019140