



ENERGY SERVICES

CEMENT BOND LOG

GAMMA RAY

CCL

Company COLORADO OIL & GAS COMMISSION

Well TRINIDAD MGP #1

Field N / A

County LAS ANIMAS

State

COLORADO

AP#: 005 - 071 -06045

WBS:

1/4 S: NW / NW SEC: 32 TWP: 33 S RGE: 66 W

RGE. 66 W

TWP. 33 S

SEC. 32

1/4 S NW / NW

Permanent Datum

Ground Level

Elevation

N / A

Log Measured From

GROUND LEVEL

Elev K.B. N / A

Elev D.F. N / A

Elev G.L. N / A

Feet Above Datum

Gun Type

N / A

Charge Type

N / A

Shots / Foot

Shots Fired

From

To

Date

6-19-13

Run Number

1

Magna Depth

945'

Driller Depth

@ 1,605' w/ PBT @ 1,371'

First Reading

938'

Last Reading

SURFACE

Max Temperature

N / A

Est. Cement Top

57'

Fluid Type

WATER

Fluid density

8.3

Est. fluid level

SURFACE

Service Order

70000217

Truck No

233

Recorded By

J. MICHAEL

Witnessed By

D. SUTPHIN

Magna Contact

RYAN LUDWIG 1 307 680 8124

Other Services

Service

Type

Size

Depth

Comments

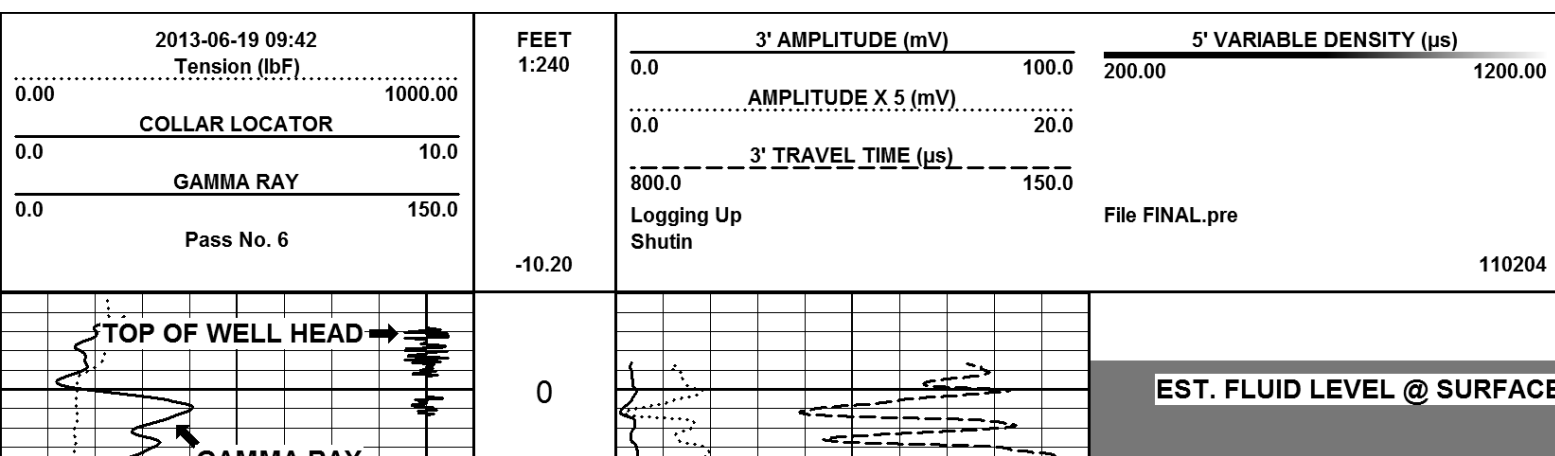
THANKS FOR CHOOSING MAGNA!

YOUR CREW: J. MICHAEL, M. HICKS

Remarks: NO CORRELATION LOG WAS PROVIDE BY CLIENT

Previous Well Information	
Depth Control Log	
Perforated	
Bridge Plug Set At	442' & 770'
Cement Retainer Set At	
Production Packer Set At	

All interpretations are opinions based on inferences from electrical or other measurements and we cannot, and do not guarantee the accuracy or correctness of any interpretations, and we shall not, except in the case of gross or willful negligence on our part, be liable or responsible for any loss, costs, damages or expenses incurred or sustained by anyone resulting from any interpretation made by any of our officers, agents, or employees. These interpretations are also subject to our general terms and conditions as set out in our current price schedule.



GAMMA RAY

CCL →

TRANSIT TIME

← 3' AMPLITUDE x 5

← 3' AMPLITUDE

← TENSION

BOTTOM OF 5 1/2" CASING

START OF 4 1/2" CASING

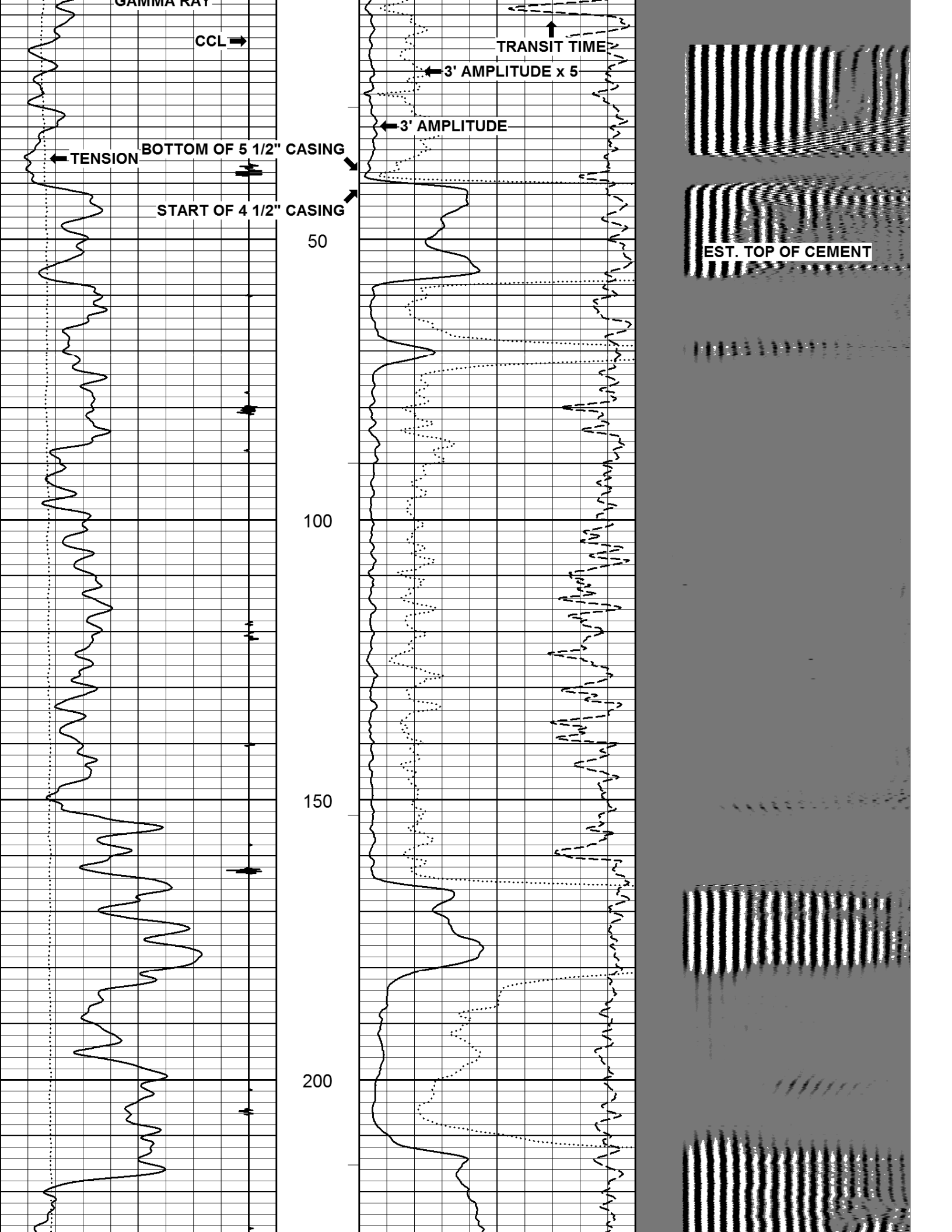
50

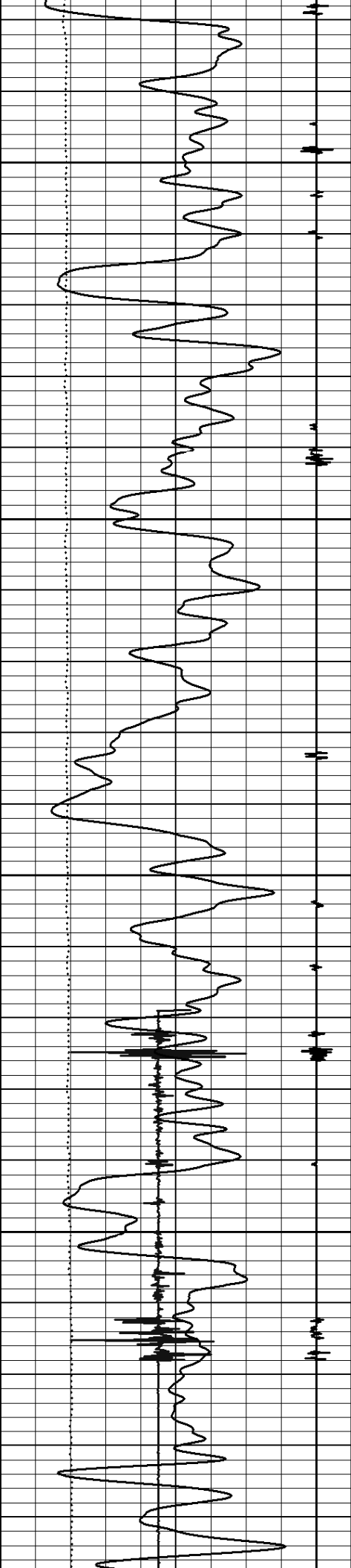
100

150

200

EST. TOP OF CEMENT



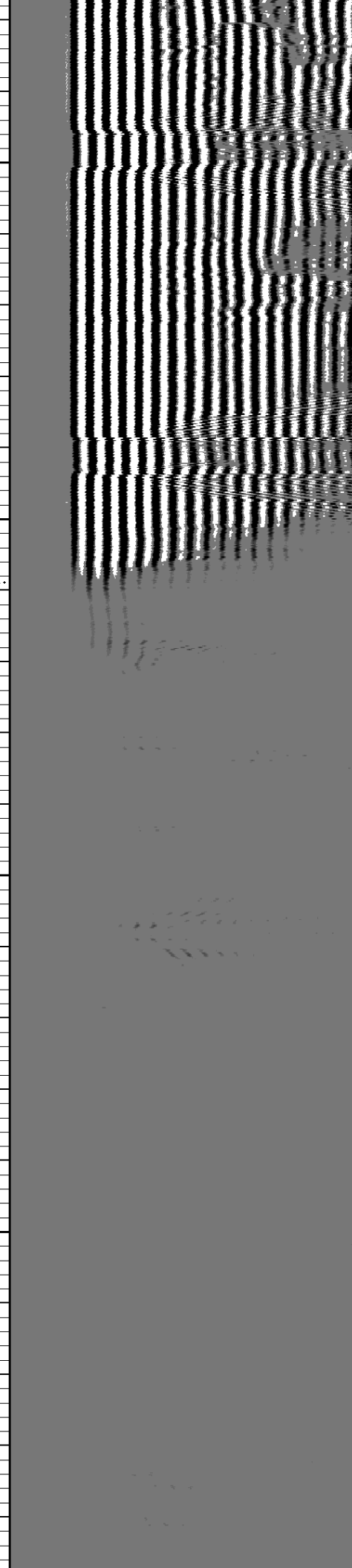
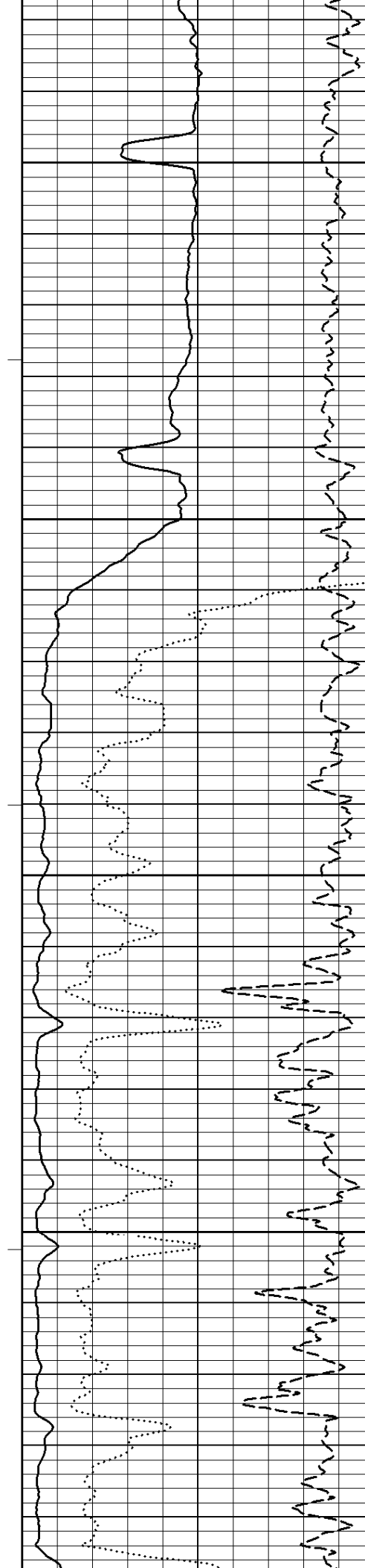


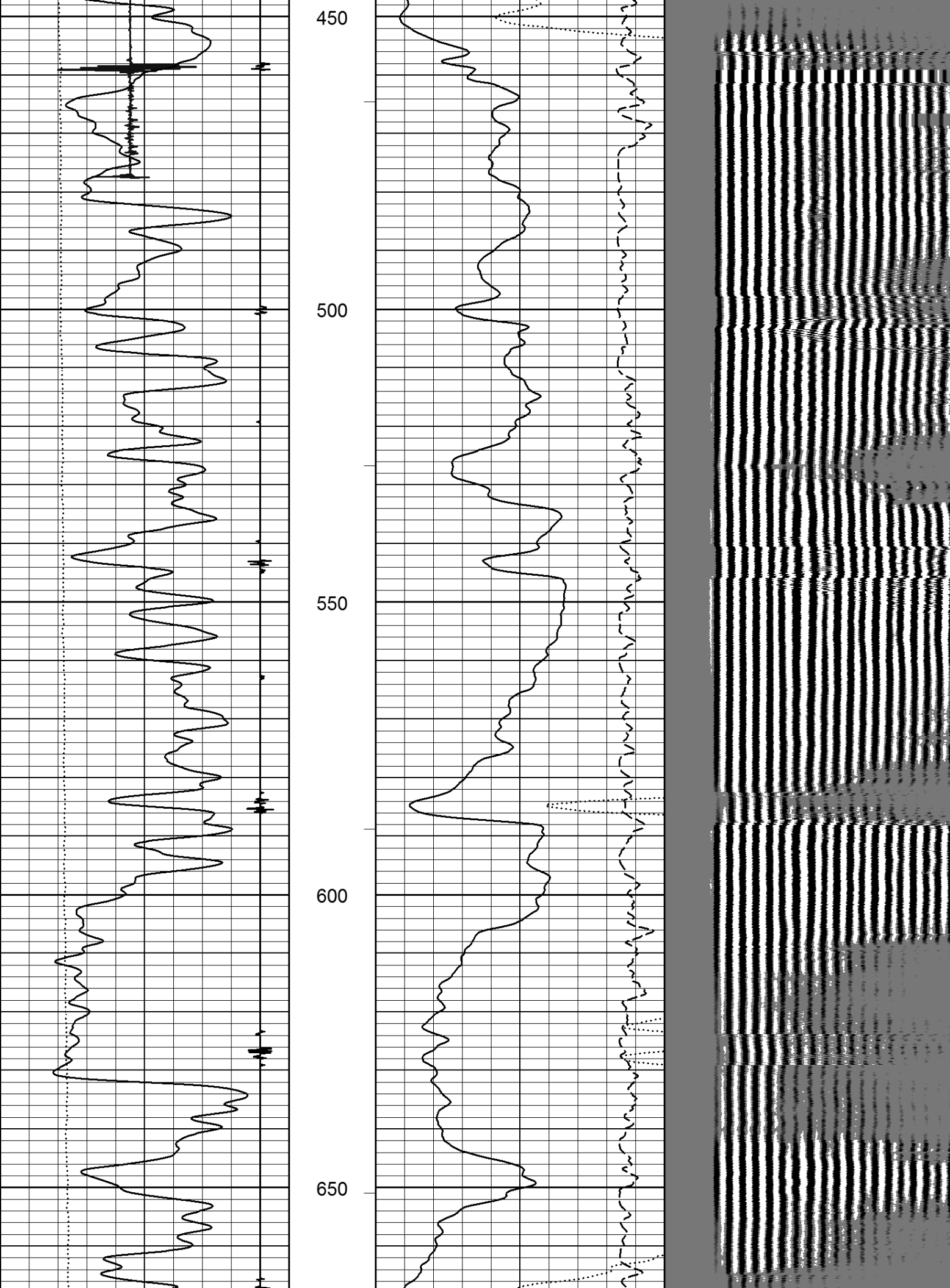
250

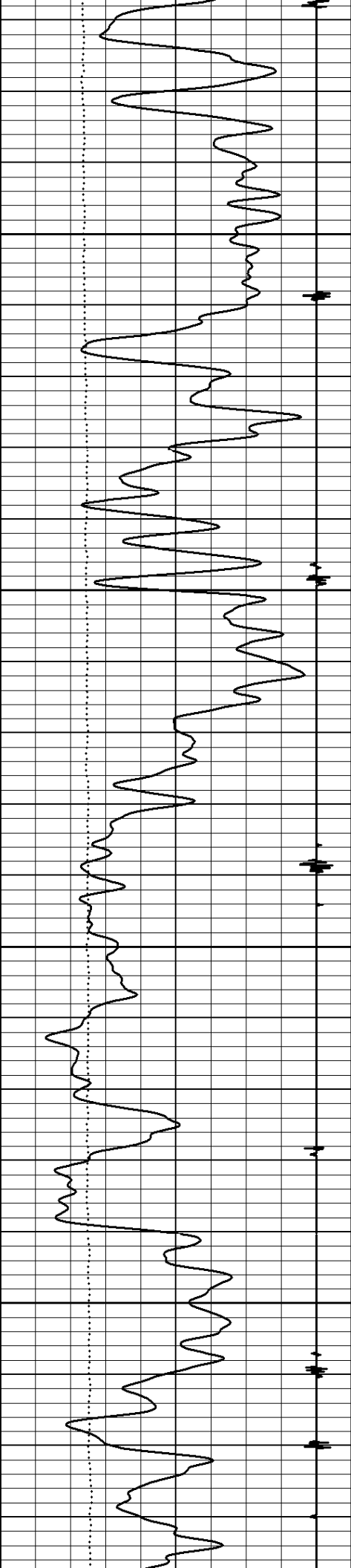
300

350

400





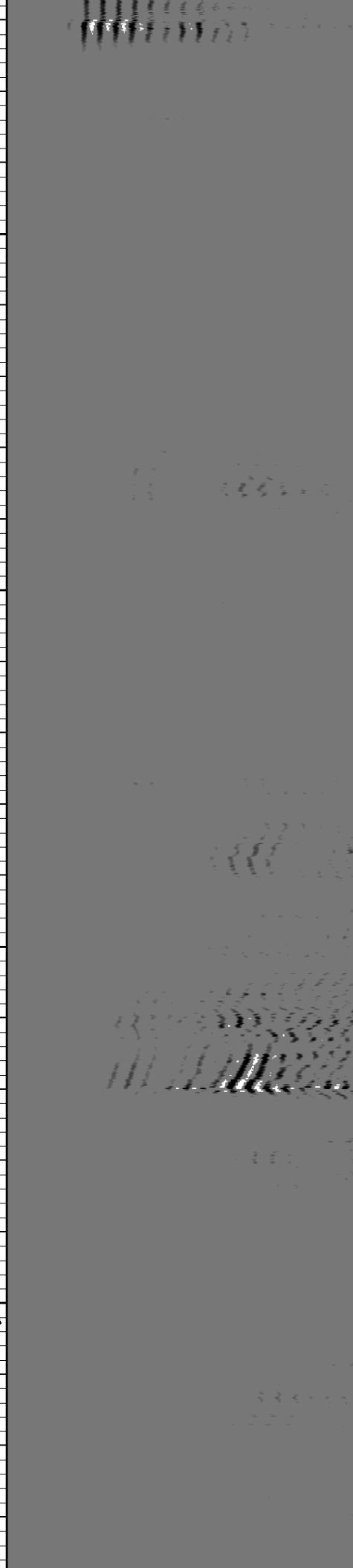
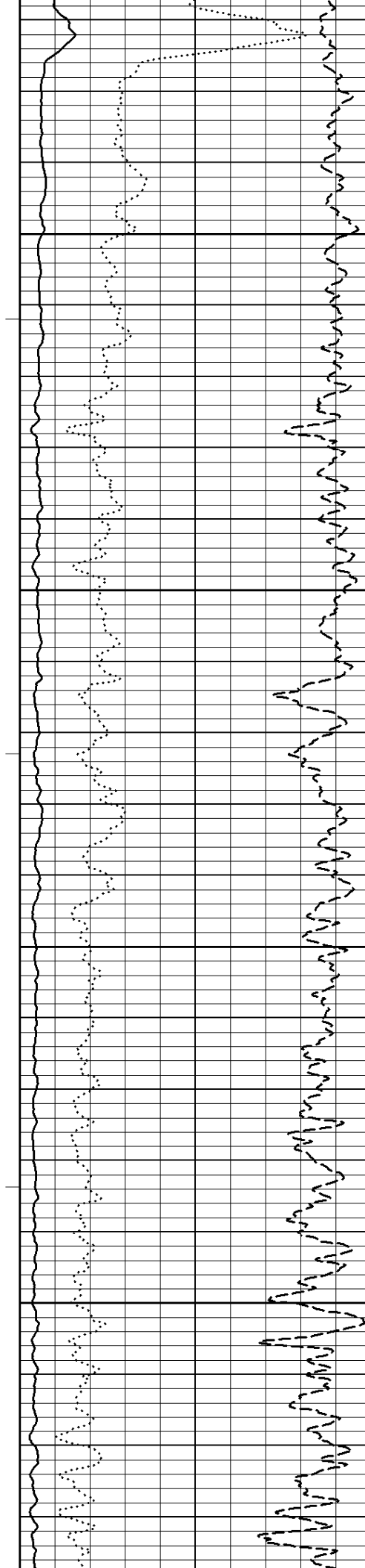


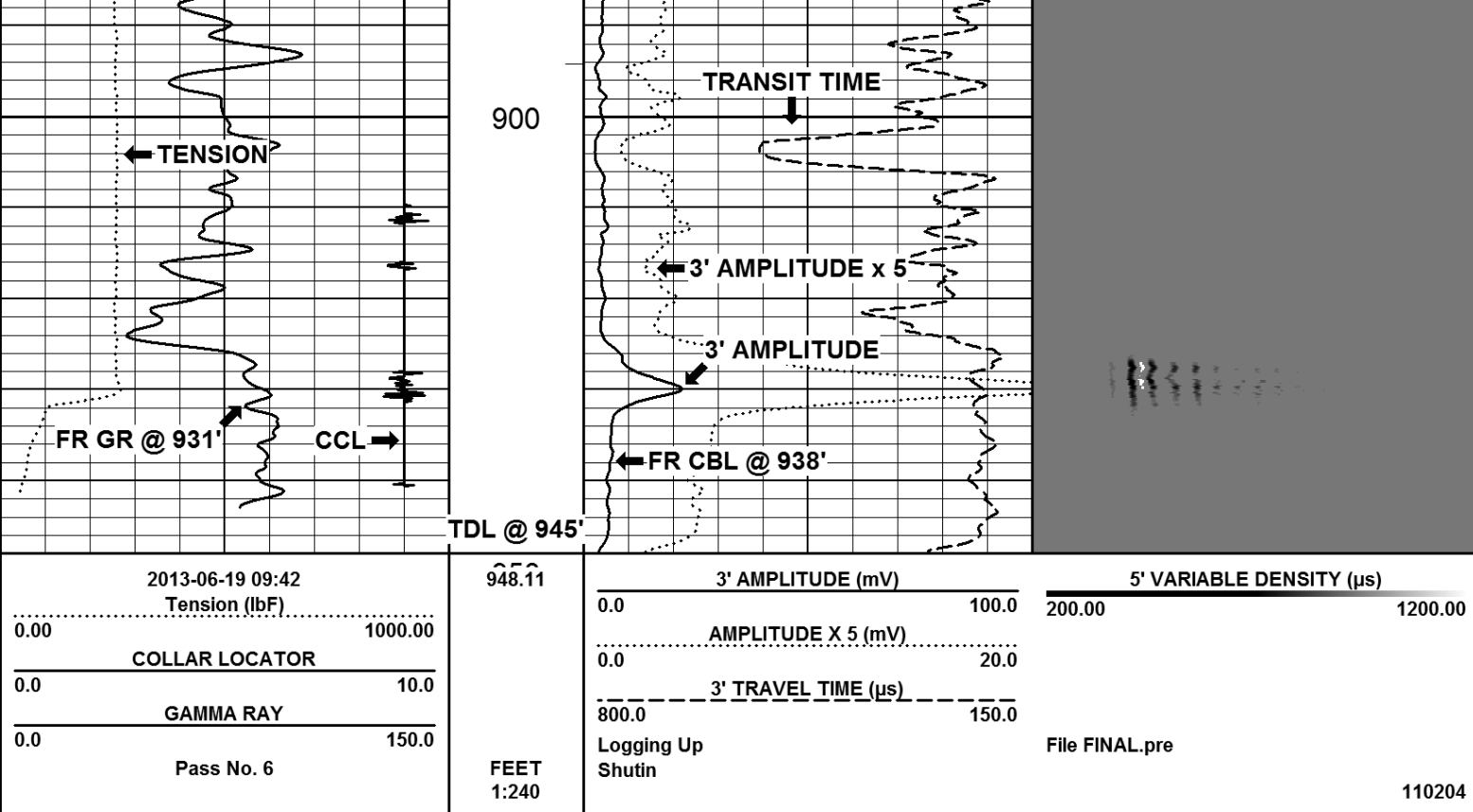
700

750

800

850





Company COLORADO OIL & GAS COMMISSION

Well TRINIDAD MGP #1

Field N / A

County LAS ANIMAS State COLORADO

1/4'S NW / 1 SEC. 32 TWP. 33 S RGE. 66 W