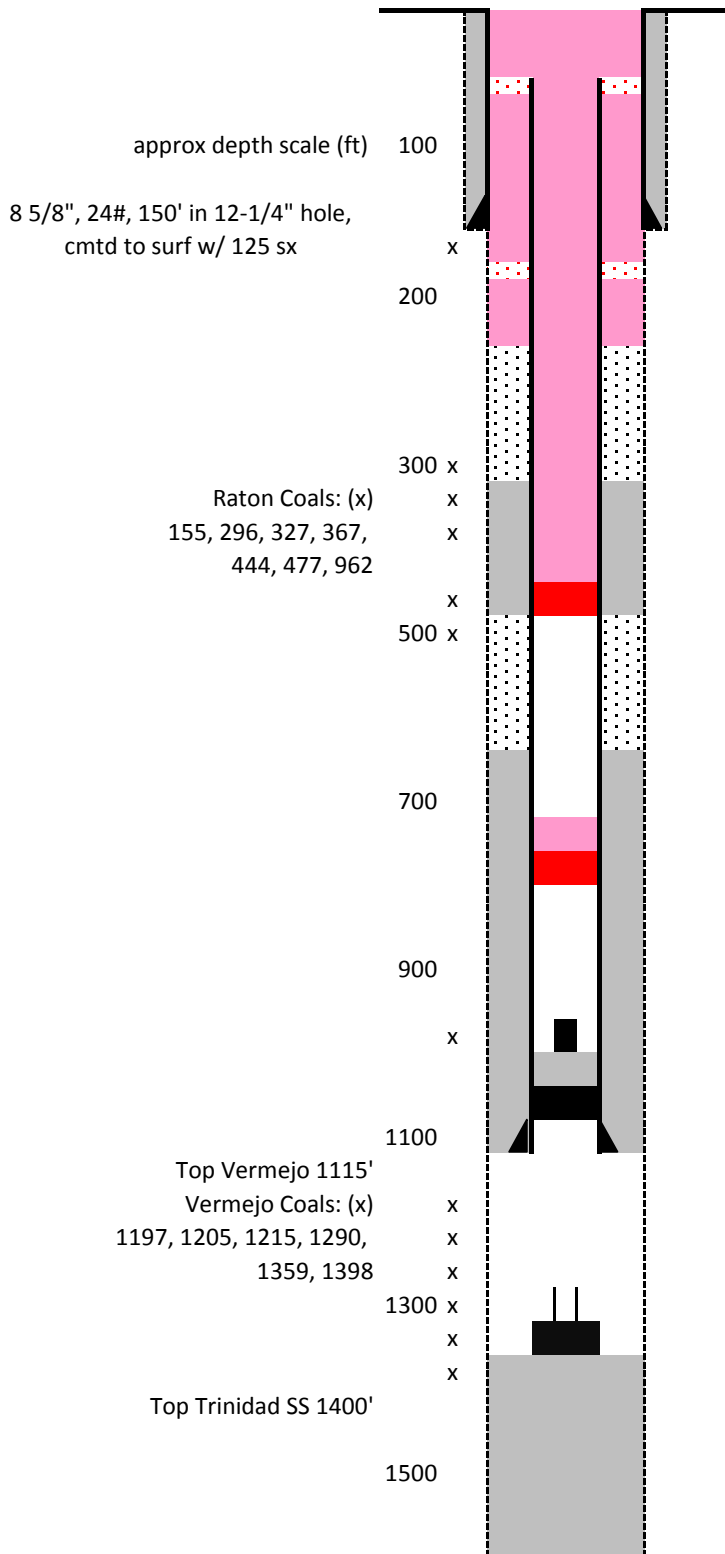


**Trinidad MGP #1
071-06045
NWNW 32-T33S-R66W
Final**



Depths are reference ground surface. Red/pink is 2013 plugging information. Black/gray is pre-existing from 1980-1984. Annulus cement intervals from CBL, 6/19/13.

Recovered 39' of 5-1/2" casing, 6/19/13.

New annulus cement:

Good bond 57'-165'. (40 sx, 15 ppg, 3% CaCl, 75# Celflake), pumped down annulus, 6/12/13.

Poor bond 165'-180'.

Good bond 180'-212'. (45 sx, 15 ppg, 3% CaCl, 10# Celflake), pumped down 1-1/4" tubing at 220', 6/11/13.

Tagged bottom in annulus at 220', 6/11/13.

Poor bond 223'-310'

Set CIBP at 442'. (55 sx, 15 ppg, 3% CaCl), pumped down 2-3/8" tubing at 440', filling 4-1/2" casing from 440' to 39' and 8-5/8" casing from 39' to surface, 6/19/13.

Good bond 310'-450'

Poor bond 450'-670'

Good bond 670'-938' (1st reading @ 938')

Set CIBP at 770' and dump bailed 2 sx cement on top, 6/19/13.

Drilled out existing cement 39'-228' w/ 3-7/8" tricone, (6/12-14/13). Milled out CIBP at 228'-229' w/ 3-7/8" flat bottom mill. Tagged at 858'. Drilled (pushed) with mill to 945', (6/17/13).

Existing Bridge Plug @ 1115' + 5 sx cement

4 1/2", 10.5#, 1122', 6" bit,
cmtd w/ 100 sx

Existing Fish: CIBP + 25' of 2-3/8" tubing. Was set at 1150', stuck. Shot tubing off at 1125'.

PBTD: 1371' (cavings + 145 sx sand + 7 sx cement)

TD: 1605'