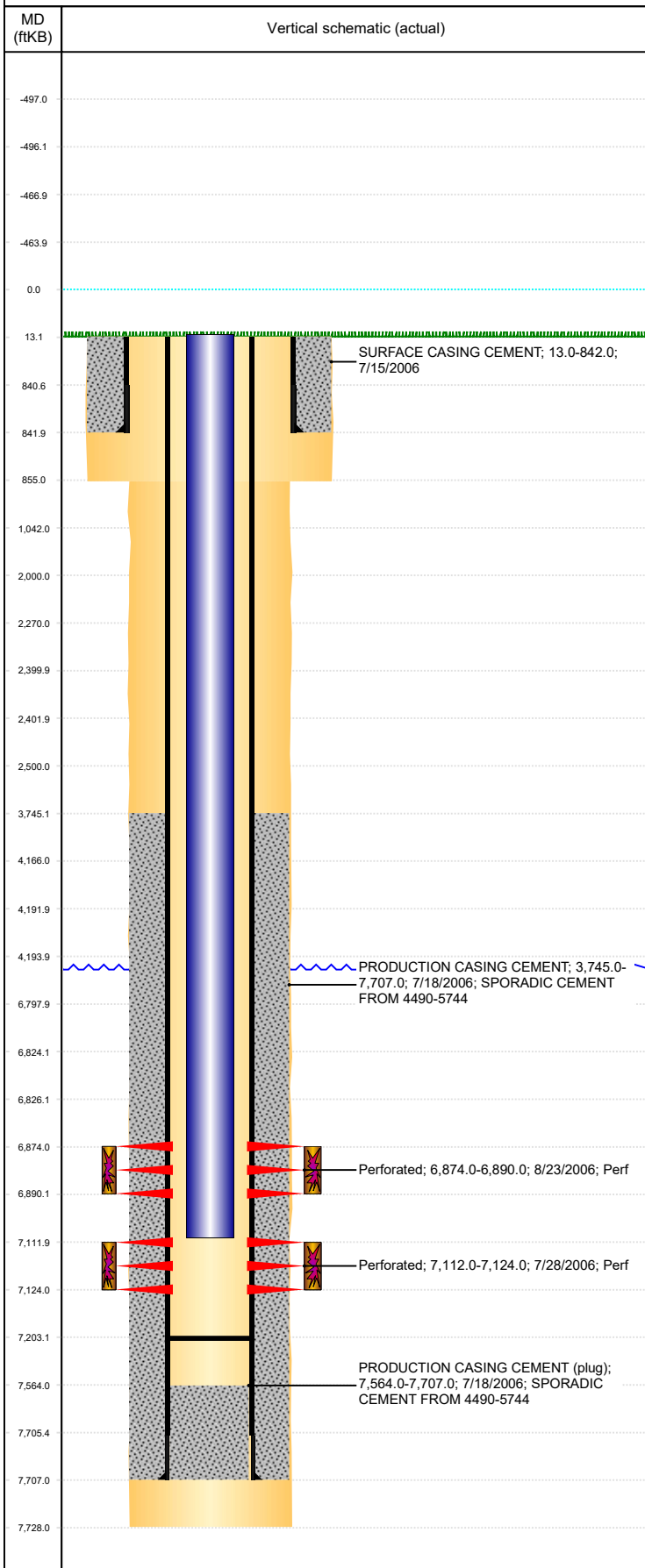


Well Name: PIONEER 22-07

VERTICAL, ORIGINAL HOLE, 1/15/2020 10:39:39 AM



Well Header									
API 05-123-23863		Business Unit DJ BASIN		District 15		Well Config VERTICAL			
KB - GL / MSL (ft... 13.00		Spud Date 7/13/2006		P & A Date		Well Production Status SI			SoRT No
Comment PUSH FP TO 7210									
Surface Location (Congressional)									
Qtr 3 SE	Qtr 4 NW	Section 7	Twnshp 2	Twنش... N	Range 64	Rng E /... W	Actual Latitude (°) 40.15405714	Actual Longitude (°) -104.59588394	
Wellbore Sections									
Section Des			Size (in)			Act Top, MD (ftKB)		Act Btm, MD (ftKB)	
SURFACE			12 1/4			13		855	
PRODUCTION			7 7/8			855		7,728	
Casing Strings									
Csg Des			Run Date		OD (in)	Wt/Len (lb/ft)	Grade	Top, MD (ftKB)	MD (ftKB)
Surface			7/13/2006		8 5/8	24.00	J-55	13.0	842.0
Production			7/18/2006		4 1/2	11.60	M-80	13.0	7,707.0
Cement									
Des					Start Date		Top (ftKB)		Btm (ftKB)
SURFACE CASING CEMENT					7/15/2006		13.0		842.0
PRODUCTION CASING CEMENT					7/18/2006		3,745.0		7,707.0
Zone Statuses									
Zone Name	Status Date	Status	Fluid Type	Job				Prod Method	
NIOBRARA	8/24/2006	PR	Water	DRILLING/COMPLETION - ORIGINAL, 7/13/2006...				Flowing	
NIOBRARA	3/4/2010	PR		RE-FRAC, 6/23/2011 09:00					
CODELL	8/8/2011	PR							
CODELL	5/9/2017	SI							
Perforation Data									
Linked Zone		Bnch/Stg	Entered Shot Total	Top (ftKB)		Btm (ftKB)		Date	
NIOBRARA, ORIGINAL HOLE			96	6,874.00		6,890.00		8/23/2006	
CODELL, ORIGINAL HOLE			48	7,112.00		7,124.00		7/28/2006	
Stimulation Intervals									
Zone				Start Date		Top (ftKB)		Btm (ftKB)	
NIOBRARA, ORIGINAL HOLE				8/23/2006		6,874.0		6,890.0	
CODELL, ORIGINAL HOLE				7/27/2011		7,112.0		7,124.0	
CODELL, ORIGINAL HOLE				8/23/2006		7,112.0		7,124.0	
Other In Hole									
Run Date		Des				OD (in)	Top (ftKB)		Btm (ftKB)
5/4/2016		Plunger Lift				1 7/8			
Logs									
Date		Type				Top, MD (ftKB)		Btm, MD (ftKB)	
7/17/2006		COMPENSATED DENSITY				2,950.0		7,695.0	
7/17/2006		INDUCTION				842.0		7,715.0	
7/28/2006		CBL/CCL/GR				3,587.0		7,562.0	
7/11/2018		GYRO				13.0		7,000.0	
Plug Back Total Depths									
Date		Type		Com				Depth (ftKB)	
12/12/2006		PLUG		C/O LAND TUBING 86.47' RATHOLE				7,691.0	
8/1/2011		NO TAG		RIH TO 7203.09' KB AND DID NOT TAG.				7,203.1	