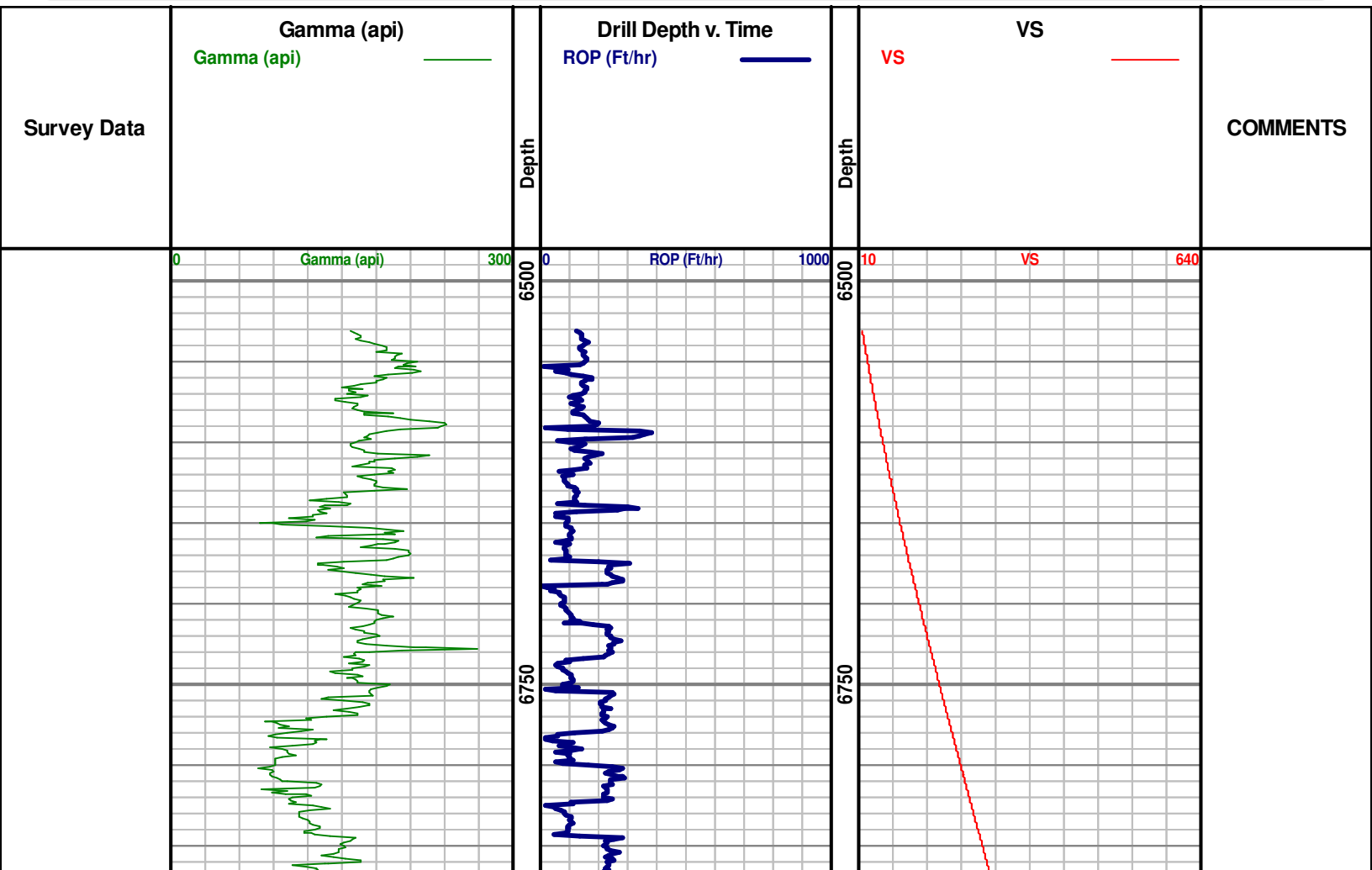


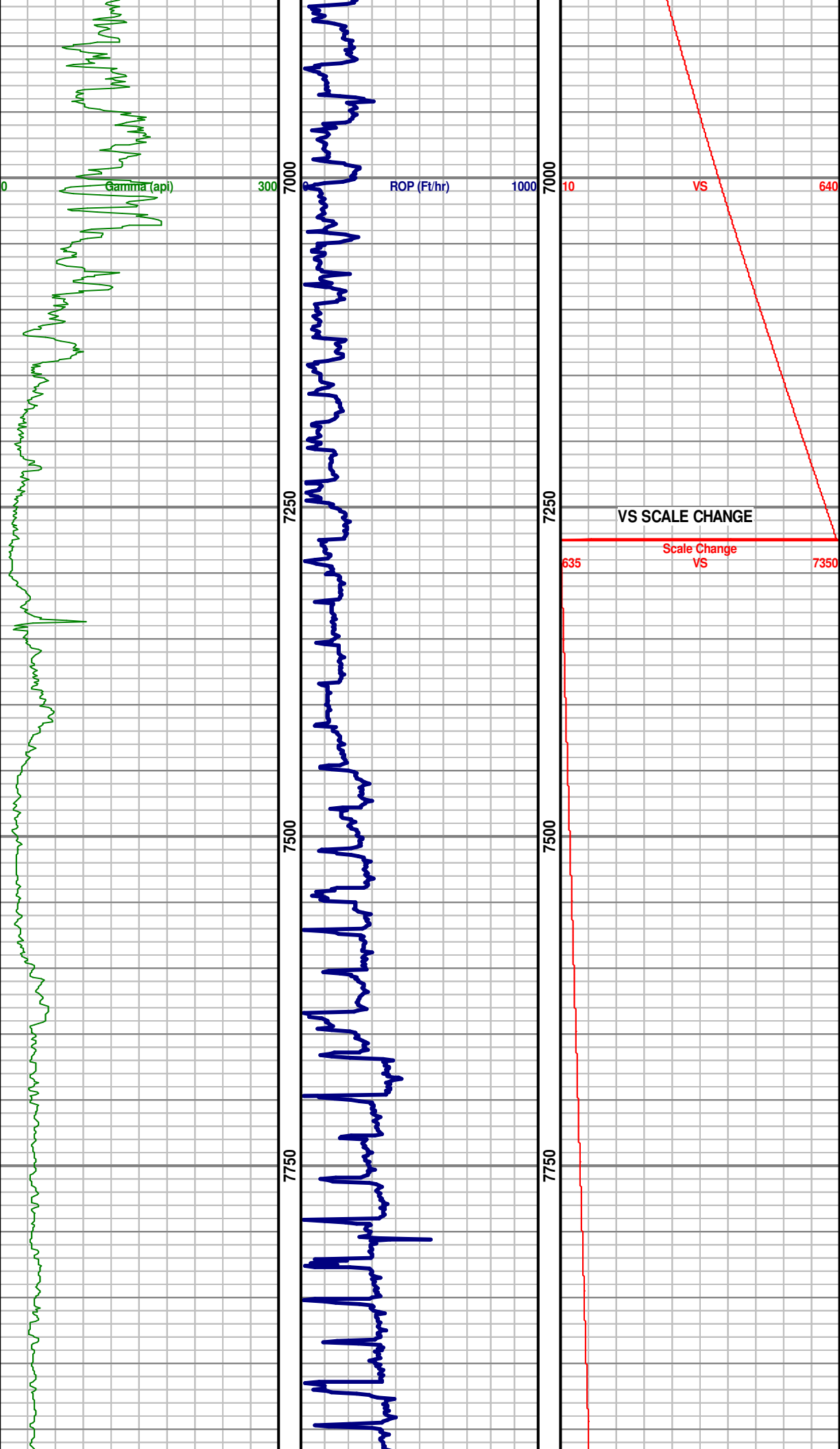


**Denver Remote Management Center**  
**13949 West Colfax Ave, Suite 205**  
**Lakewood, Colorado 80401**

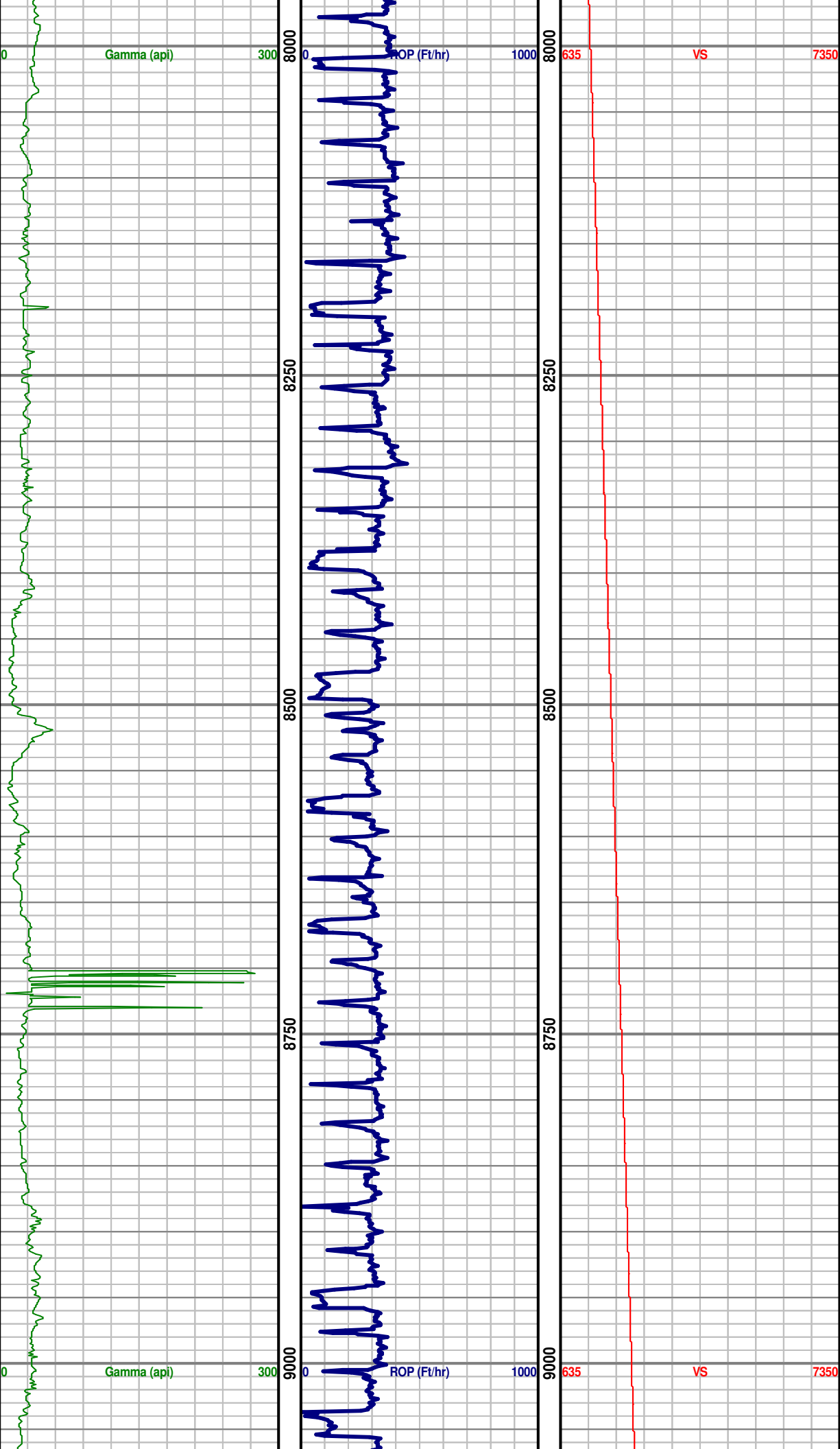
Phone 303.325.3289  
[WWW.HZMUD.COM](http://WWW.HZMUD.COM)

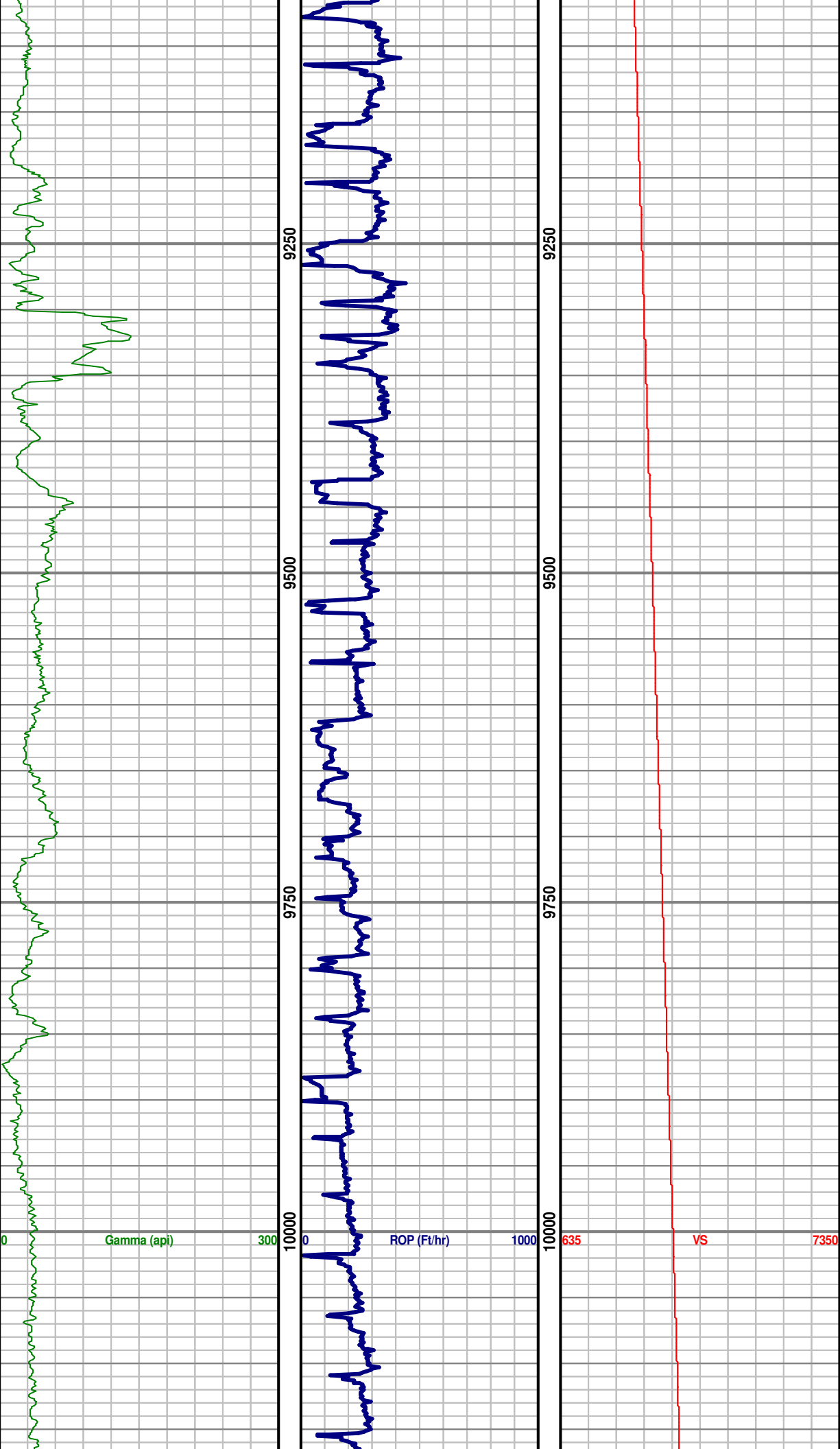
Customer Information	Well Information
<p><b>Operator:</b> PDC Energy Inc  1775 Sherman Street  Suite 3000  Denver, CO 80203</p> <p><b>Geologist:</b> Nathan Marolf  PDC Energy, Inc.</p>	<p><b>Well Name:</b> Churchill 28E-423</p> <p><b>Location:</b> NWNW SEC 28, 5N, 64W, 6TH  250' FNL x 1245' FWL</p> <p><b>County:</b> Weld County  <b>State:</b> Colorado</p>
Remote Logging Details	
<p><b>Logger:</b> Horizon Geosteering  Operations Center</p> <p><b>Log Interval:</b> 6531' MD to 13920' MD  <b>Start Date:</b> March 9, 2015  <b>Release Date:</b> March 14, 2015</p>	<p><b>Drilling Rig:</b> Ensign 136  <b>Total Depth:</b> 13920' MD  <b>TD Date:</b> March 14, 2015  <b>Field :</b> Wattenberg  <b>KB Elevation:</b> 4648'  <b>GR Elevation:</b> 4635'  <b>API Number:</b> 05123398690000</p>

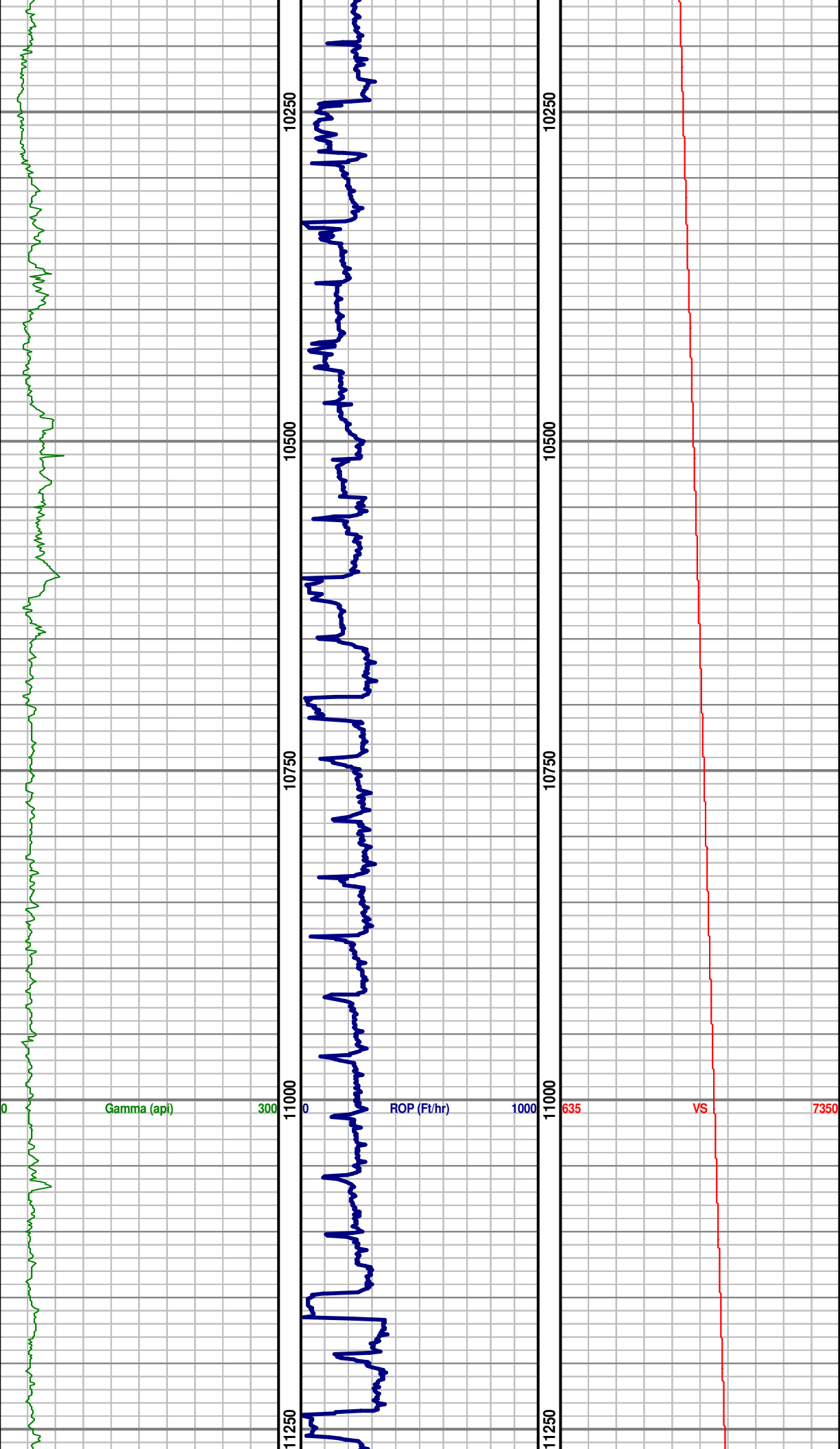




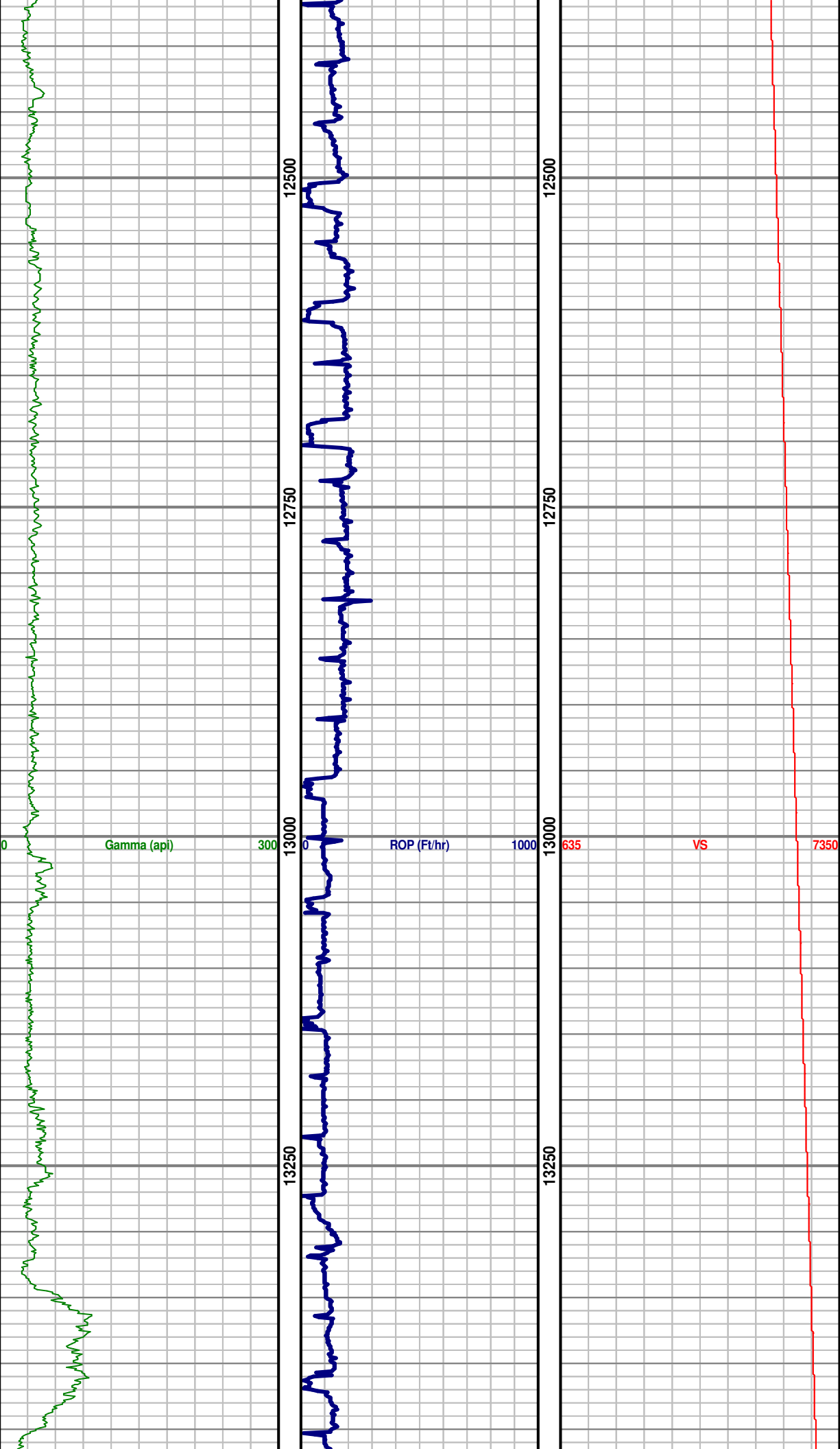
Curve TD @ 7274'  
MD (6812.86' TVD,  
633.11' VS) On  
03/09/15

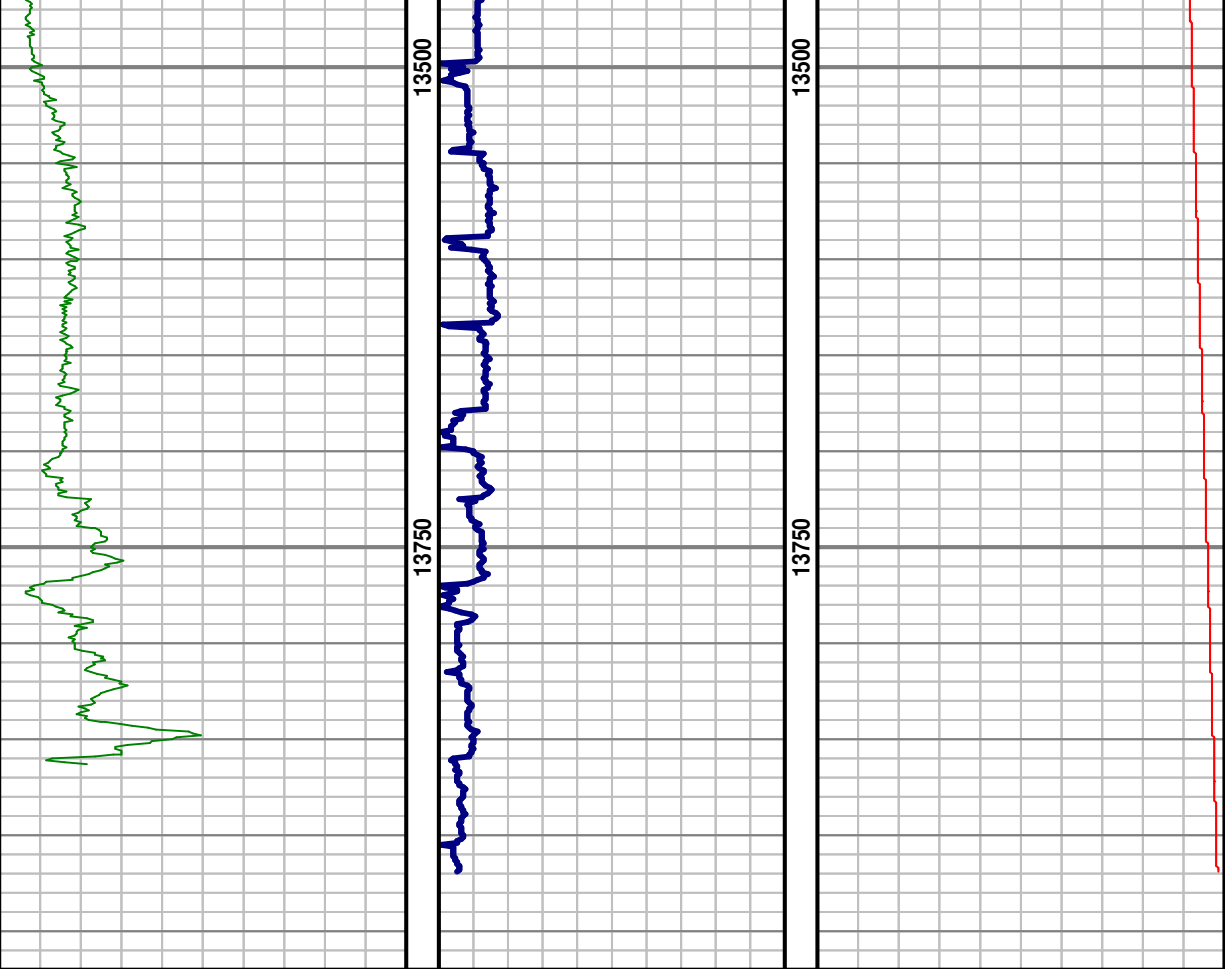












Lateral TD @  
13920' MD  
(6797.9' TVD,  
7236.34' VS) ON  
03/14/15