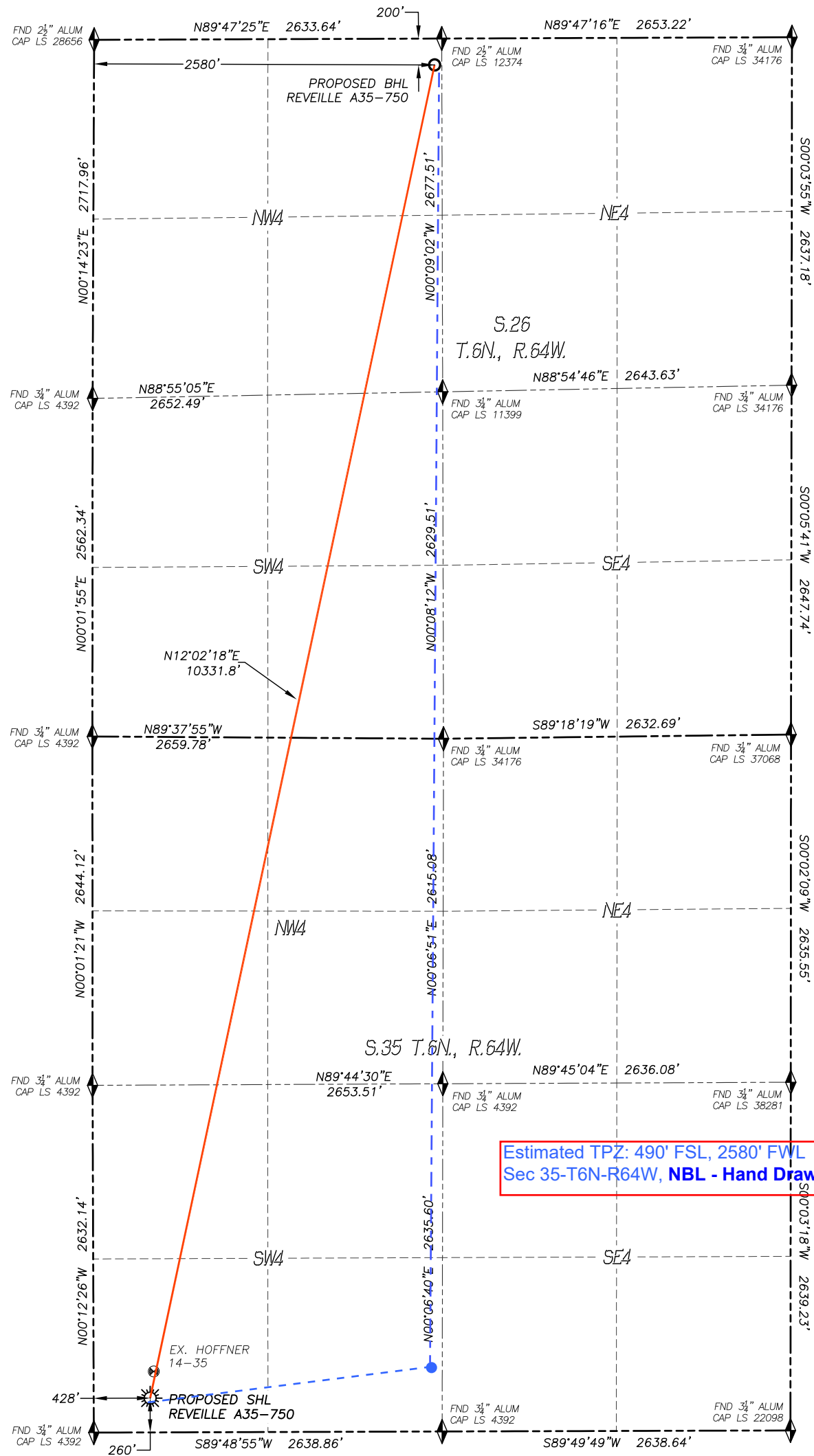


SECTION 35, TOWNSHIP 6 NORTH, RANGE 64 WEST OF THE 6TH P.M.



Estimated TPZ: 490' FSL, 2580' FWL
Sec 35-T6N-R64W, **NBL - Hand Drawn 7/2019**

- 1) BEARINGS FOR THIS MAP ARE ASSUMED AND BASED UPON GPS OBSERVATIONS MADE BETWEEN MONUMENTS LOCATED AT THE SOUTHWEST CORNER AND WEST QUARTER CORNER OF SECTION 35, T.6N., R.64W.
- 2) HORIZONTAL DATUM IS NAD83.
- 3) VERTICAL DATUM IS NAVD88 AND ORIGINATES FROM THE LOCAL C.O.R.S. NETWORK, UTILIZING THE GEOID12A MODEL.
- 4) SEE LOCATION DRAWING FOR VISIBLE IMPROVEMENTS WITHIN 500' OF PROPOSED DISTURBED AREA.
- 5) SURFACE USE: AGRICULTURAL.
- 6) INST. OPERATOR: SCOTT ESTABROOKS.
- 7) NEAREST WELL: 202'± NE. - HOFFNER 14-35









NEAREST CULTURAL ITEMS:

BUILDING:	435'± SW
BUILDING UNIT:	604'± SW
HIGH OCC. BLD. UNIT:	5280'±
DES. OUTSIDE ACTIVITY AREA:	5280'±
PUBLIC ROAD:	247'± S
ABOVE GROUND UTILITY:	232'± S
RAILROAD:	5280'±
PROPERTY LINE:	7'± SW

NAD 83 LATITUDE AND LONGITUDE

<u>SURFACE LOCATION:</u>	<u>BOTTOM HOLE:</u>
LATITUDE: N40.43633°	LATITUDE: N40.46406°
LONGITUDE: W104.52524°	LONGITUDE: W104.51750°
ELEV: 4647'	
PDOP: 1.4	
QTR/QTR: SW4/SW4	

LEGEND

	FOUND MONUMENT AS DESCRIBED
	PROPOSED WELL
	EXISTING WELL
	BOTTOM HOLE
	ABANDONED WELL
	CALCULATED POSITION

