



388-2



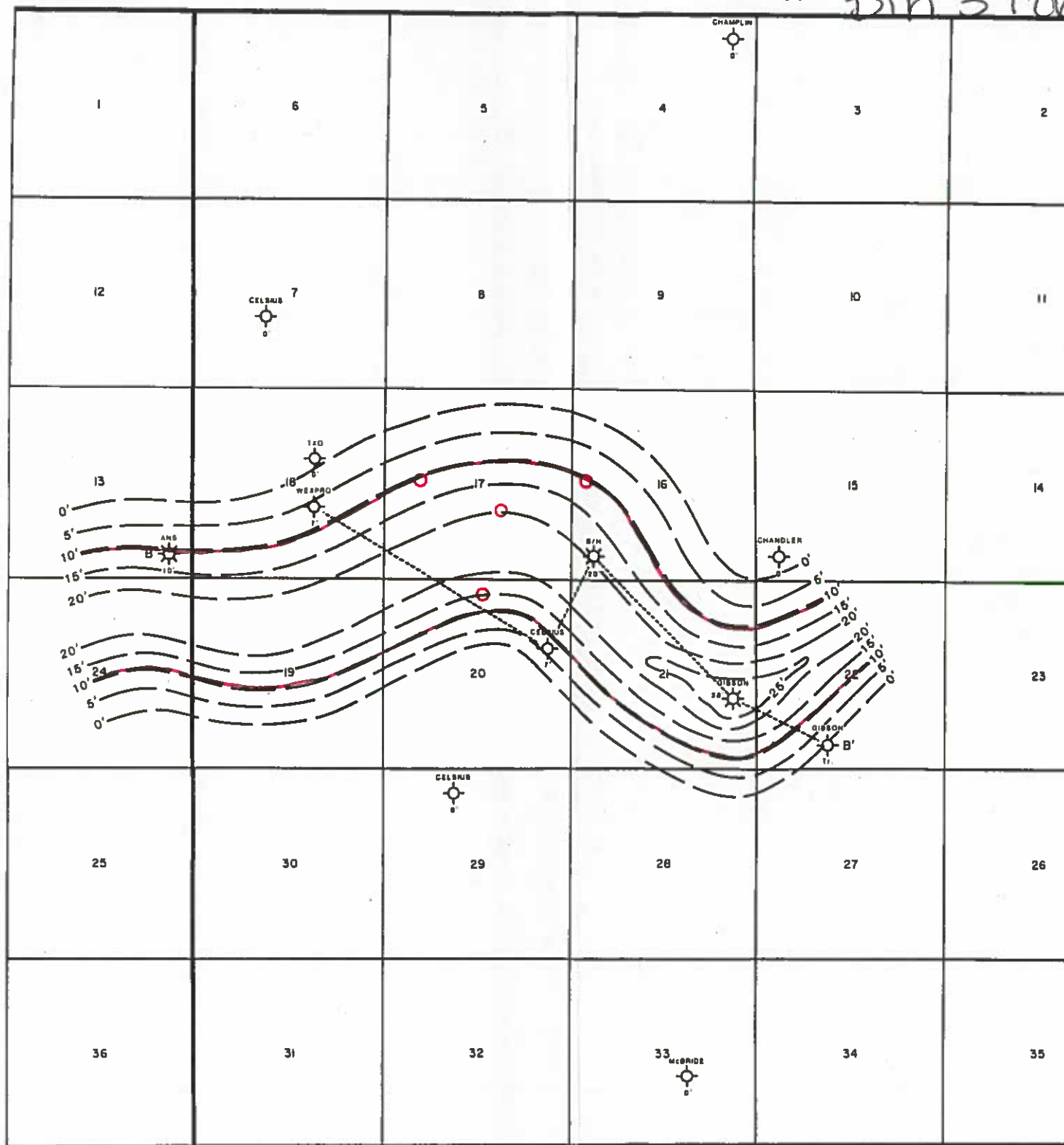
00773084

R 48 W

R 47 W

Bin 3 Fol

T  
19  
S



LEGEND:

Morrow Channel Effective Pay



**BURTON/HAWI**  
 NE McCLAVE PROSPE  
 KIOWA COUNTY, COLORADO  
 MORROW (McCLAVE) CHANNEL TIE  
 THROUGH NEEDSOME FIELD  
 Interpretation by R.E.S. Surveyed 1969  
 Date: 2/5/83 Map Scale: 1

Exhibit B