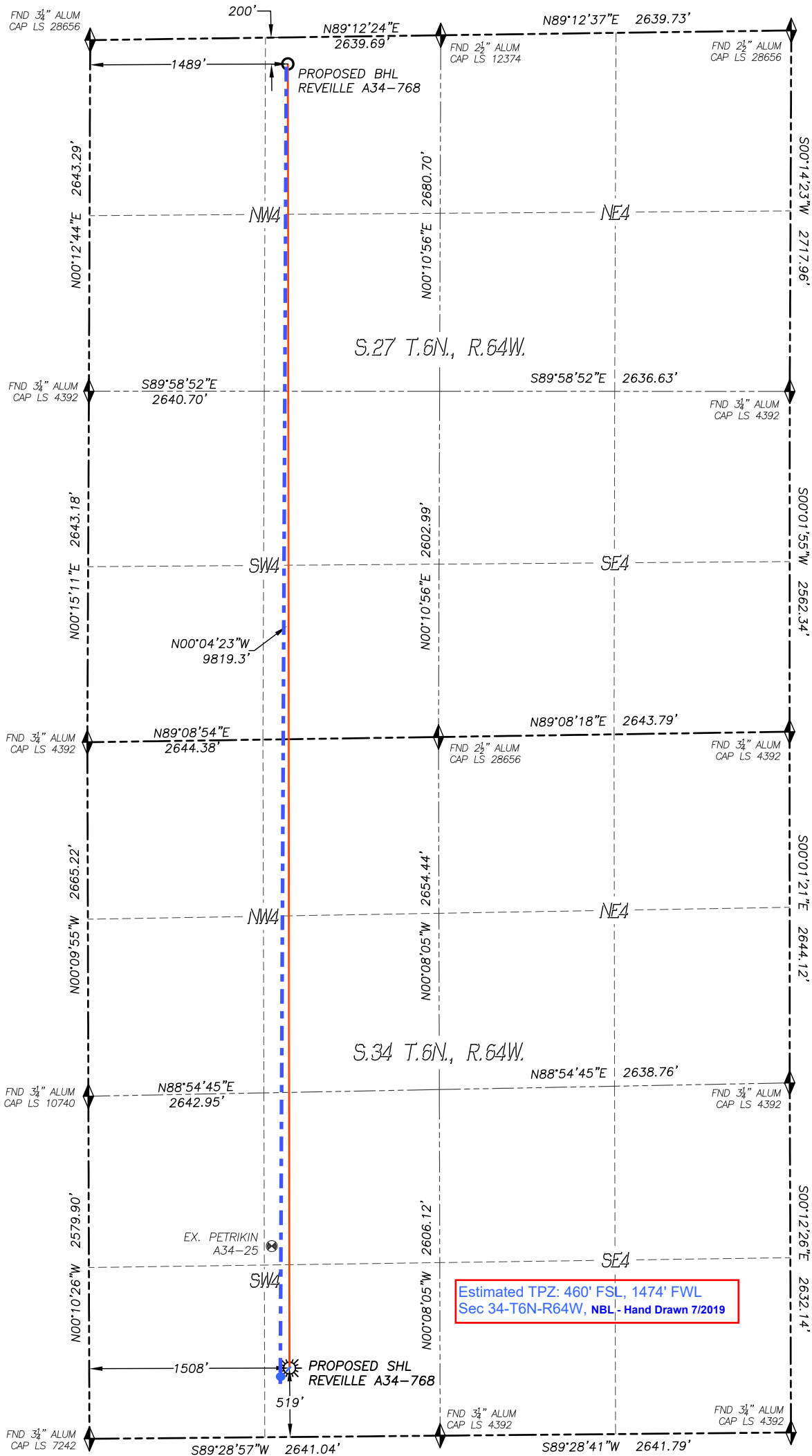


WELL LOCATION CERTIFICATE  
REVEILLE A34-768

SECTION 34, TOWNSHIP 6 NORTH, RANGE 64 WEST OF THE 6TH P.M.



APPROVED  
By Cory at 1:03 pm, Jul 24, 2019

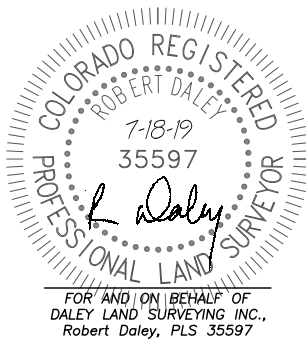
Estimated TPZ: 460' FSL, 1474' FWL  
Sec 34-T6N-R64W, NBL - Hand Drawn 7/2019

IN ACCORDANCE WITH A REQUEST FROM GREG WILSON OF NOBLE ENERGY INC., DALEY LAND SURVEYING, INC. HAS DETERMINED THE SURFACE LOCATION OF THE REVEILLE A34-768 WELL TO BE 519' FSL, 1508' FWL, AS MEASURED AT NINETY (90) DEGREES FROM THE SECTION LINES OF SECTION 34, TOWNSHIP 6 NORTH, RANGE 64 WEST AND THE BOTTOM HOLE LOCATION TO BE 200' FNL, 1489' FWL, AS MEASURED AT NINETY (90) DEGREES FROM THE SECTION LINES OF SECTION 27, TOWNSHIP 6 NORTH, RANGE 64 WEST, OF THE 6TH PRINCIPAL MERIDIAN, WELD COUNTY, COLORADO.

I HEREBY STATE THAT THIS WELL LOCATION CERTIFICATE WAS PREPARED BY ME OR UNDER MY DIRECT SUPERVISION, THAT THE WORK WAS COMPLETED ON 4/18/2019 FOR AND ON BEHALF OF NOBLE ENERGY, INC., AND THAT THIS MAP DOES NOT REPRESENT A BOUNDARY SURVEY, IT IS NOT A LAND SURVEY PLAT OR AN IMPROVEMENT SURVEY PLAT AND IT IS NOT TO BE RELIED UPON FOR THE ESTABLISHMENT OF FENCE, BUILDING OR OTHER FUTURE IMPROVEMENT LINES.

NOTES:

- 1) BEARINGS FOR THIS MAP ARE ASSUMED AND BASED UPON GPS OBSERVATIONS MADE BETWEEN MONUMENTS LOCATED AT THE SOUTHWEST CORNER AND WEST QUARTER CORNER OF SECTION 34, T.6N., R.64W.
- 2) HORIZONTAL DATUM IS NAD83.
- 3) VERTICAL DATUM IS NAVD88 AND ORIGINATES FROM THE LOCAL C.O.R.S. NETWORK, UTILIZING THE GEOID12A MODEL.
- 4) SEE LOCATION DRAWING FOR VISIBLE IMPROVEMENTS WITHIN 500' OF PROPOSED DISTURBED AREA.
- 5) SURFACE USE: AGRICULTURAL.
- 6) INST. OPERATOR: SCOTT ESTABROOKS.
- 7) NEAREST WELL: 928'± NW - PETRIKIN A34-25



NEAREST CULTURAL ITEMS:

BUILDING: 619'± SE  
BUILDING UNIT: 1030'± SE  
HIGH OCC. BLD. UNIT: 5280'+  
DES. OUTSIDE ACTIVITY AREA: 5280'+  
PUBLIC ROAD: 507'± S  
ABOVE GROUND UTILITY: 486'± S  
RAILROAD: 5280'+  
PROPERTY LINE: 197'± W

NAD 83 LATITUDE AND LONGITUDE

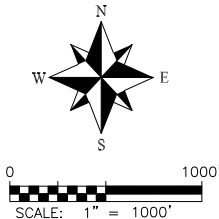
SURFACE LOCATION:

LATITUDE: N40.43695°  
LONGITUDE: W104.54033°  
ELEV: 4631'  
PDOP: 1.4  
QTR/QTR: SE4/SW4

BOTTOM HOLE:

LATITUDE: N40.46389°  
LONGITUDE: W104.54039°

- LEGEND
- FOUND MONUMENT AS DESCRIBED
  - PROPOSED WELL
  - EXISTING WELL
  - BOTTOM HOLE
  - ABANDONED WELL
  - CALCULATED POSITION



noble energy

DALEY LAND  
SURVEYING, INC.  
303.953.9841