

T5N, R68W

T5N, R67W

NW. COR.
SEC. 13, T5N, R68W
FOUND 3 1/2" ALUM. CAP
P.L.S. NO. 36061

N. 1/4 COR.
SEC. 13, T5N, R68W
FOUND 2 1/2" ALUM. CAP
L.S. NO. 12374

LARIMER
COUNTY
WELD
COUNTY

N 89°20'26" W 2755.29' (M)

N 89°20'03" W 2746.85' (M)

N 89°41'01" E 2435.87' (M)

SURFACE LOCATION: NAD 83
GROUND ELEVATION= 4920.6'
LATITUDE= 40.400822°
LONGITUDE= -104.942143°
LATITUDE= 40°24'02.960"
LONGITUDE= -104°56'31.713"
HEEL LOCATION: NAD 83
LATITUDE= 40.398290°
LONGITUDE= -104.945007°
LATITUDE= 40°23'53.844"
LONGITUDE= -104°56'42.024"
BOTTOM HOLE LOCATION: NAD 83
LATITUDE= 40.398350°
LONGITUDE= -104.991213°
LATITUDE= 40°23'54.060"
LONGITUDE= -104°59'28.367"

NW. COR.
SEC. 18, T5N, R67W
FOUND 3 1/2" ALUM. CAP
ILLEGIBLE

N. 1/4 COR.
SEC. 18, T5N, R67W
FOUND 2 1/2" ALUM. CAP
L.S. NO. 30462

N 00°27'45" E 2654.24' (M)

N 00°25'25" E 2642.13' (M)

2236'

DAMORE 18-7HZ
SURFACE LOCATION

CENTER 1/4 COR.
SEC. 13, T5N, R68W
FOUND 2" ALUM. CAP
P.L.S. NO. 11989

W. 1/4 COR.
SEC. 18, T5N, R67W
FOUND 3 1/4" ALUM. CAP
P.L.S. NO. 10855

CENTER 1/4 COR.
SEC. 18, T5N, R67W
FOUND 2 1/2" ALUM. CAP
L.S. NO. 30462

W. 1/4 COR.
SEC. 13, T5N, R68W
FOUND 3 1/4" ALUM. CAP
L.S. NO. 34176

N 89°29'48" W 2745.61' (M)

N 89°35'12" W 2748.62' (M)

N 89°50'33" E 2460.65' (M)

WELLBORE CONTINUES
INTO SECTION 14

13

18

N 00°16'15" E 1320.02' (M)

N 00°29'34" E 1319.37' (M)

N 00°25'35" E 2642.18' (M)

NO. 2

SW. 1/16 COR.
SEC. 13, T5N, R68W
FOUND 2 1/2" ALUM. CAP
P.L.S. NO. 38512

N 89°30'30" W 1369.95' (M)

CS. 1/16 COR.
SEC. 13, T5N, R68W
FOUND 3 1/4" ALUM. CAP
P.L.S. NO. 31159

S. 1/16 COR.
SEC. 13 & SEC. 14
T5N, R68W
FOUND 2 1/2" ALUM. CAP
P.L.S. NO. 37065

HEEL LOCATION

N 00°14'31" E 1319.78' (M)

N 00°29'18" E 1319.44' (M)

N 00°25'35" E 2642.18' (M)

MATCH LINE
SEE SHEET 2

N 89°35'53" W 1368.87' (M)

N 89°26'08" W 1365.96' (M)

N 89°31'00" W 2751.58' (M)

N 89°57'56" E 2485.57' (M)

SW. COR.
SEC. 13, T5N, R68W
FOUND 2" ALUM. CAP
P.L.S. NO. 11989

W. 1/16 COR.
SEC. 13 & SEC. 24, T5N, R68W
FOUND 2" ALUM. CAP
P.L.S. NO. 11989

S. 1/4 COR.
SEC. 13, T5N, R68W
FOUND 3 1/4" ALUM. CAP
P.L.S. NO. 10855

CERTIFICATE OF SURVEYOR:

THIS IS TO CERTIFY THAT THE ABOVE PLAT WAS PREPARED FROM FIELD NOTES OF ACTUAL SURVEYS MADE BY ME OR UNDER MY SUPERVISION AND THAT THE SAME ARE TRUE AND CORRECT TO THE BEST OF MY KNOWLEDGE AND BELIEF. THIS CERTIFICATE DOES NOT REPRESENT A LAND SURVEY PLAT OR IMPROVEMENT SURVEY PLAT AS DEFINED BY C.R.S. 38-5-102 AND CANNOT BE RELIED UPON TO DETERMINE OWNERSHIP.

Randall K. French
38512
1/15/19
RANDALL K. FRENCH
PROFESSIONAL LAND SURVEYOR
COLORADO REGISTRATION NUMBER 38512

NOTICE:
ACCORDING TO COLORADO STATE LAW YOU MUST READ THIS PLAT WITH CARE. IF YOU DISCOVER ANY DEFECT IN THIS SURVEY BE COMMENCED MORE THAN TEN YEARS FROM THE DATE ON THE CERTIFICATION SHOWN HEREON.

NOTE:
MAGNETIC NORTH IS CURRENT AS OF 9/7/2018.
MAGNETIC NORTH CHANGES WEST 0°06' PER YEAR.

21'38" 7°49"

TRUE GRID MAGNETIC

0 1000' 2000'

SCALE: 1" = 1000'

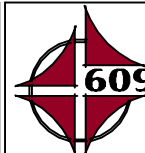
NOTES:

- ▲ INDICATES SECTION CORNER.
- INDICATES CALCULATED CORNER.
- ELEVATION BASED ON NAVD88 (GEOID12B).
- BASIS OF BEARING DERIVED FROM COLORADO COORDINATE SYSTEM OF 1983 NORTH ZONE.
- ALL MEASURED DISTANCES ARE GRID.
COMBINED SCALE FACTOR: .99972603 CALCULATED FROM THE NE. CORNER OF SECTION 18, T5N, R67W.
- OPERATOR: PRESTON KNUSTEN / PDOP = 1.9.
- SEE ADDENDUM TO WELL LOCATION CERTIFICATE FOR EXISTING IMPROVEMENTS WITHIN 500' OF THE WELL PAD.
- WELL FOOTAGES ARE MEASURED AT RIGHT ANGLES TO THE SECTION LINES.
- THE BOTTOM OF HOLE BEARS S89°45'14"W, 12869' FROM THE HEEL LOCATION.
- NO. 2 AS SHOWN HEREON IS GOVERNMENT LOT 2 PER THE ORIGINAL GLO SURVEY.

WELL PAD - DAMORE 5-18HZ

DAMORE 18-7HZ
WELL LOCATION CERTIFICATE
2236' FNL & 710' FWL LOT 2 (SWNW) (SURFACE)
LOCATED IN SECTION 18, T5N, R67W, 6TH P.M.
WELD COUNTY, COLORADO
2124' FSL & 75' FEL NESE (HEEL)
LOCATED IN SECTION 13
2105' FSL & 2157' FEL NWSE (BOTTOM)
LOCATED IN SECTION 15, T5N, R68W, 6TH P.M.
LARIMER COUNTY, COLORADO

Kerr-McGee Oil &
Gas Onshore L.P.
1099 18th Street
Denver, Colorado 80202



CONSULTING, LLC

SHERIDAN OFFICE
1095 Saberton Avenue
Sheridan, Wyoming 82801
Phone 307-674-0609

LOVELAND OFFICE
6706 North Franklin Avenue
Loveland, Colorado 80538
Phone 970-776-4331

DRAFTED BY:	LMO	CHECKED BY:	RKF	SHEET NO:
DATE DRAFTED:	10/8/18	DATE SURVEYED:	9/7/18	1
REVISED:	1/15/19	FILE NAME:	16-54	1 OF 3

T5N, R68W

N. 1/4 COR.
SEC. 14, T5N, R68W
FOUND 3 1/2" ALUM. CAP
P.L.S. NO. 36061

NW. COR.
SEC. 14, T5N, R68W
FOUND 2 1/2" ALUM. CAP
ILLEGIBLE

NE. COR.
SEC. 14, T5N, R68W
FOUND 3 1/2" ALUM. CAP
P.L.S. NO. 36061

SURFACE LOCATION: NAD 83
GROUND ELEVATION= 4920.6'
LATITUDE= 40.400822°
LONGITUDE= -104.942143°
LATITUDE= 40°24'02.960"
LONGITUDE= -104°56'31.713"
HEEL LOCATION: NAD 83
LATITUDE= 40.398290°
LONGITUDE= -104.945007°
LATITUDE= 40°23'53.844"
LONGITUDE= -104°56'42.024"
BOTTOM HOLE LOCATION: NAD 83
LATITUDE= 40.398350°
LONGITUDE= -104.991213°
LATITUDE= 40°23'54.060"
LONGITUDE= -104°59'28.367"

CENTER 1/4 COR.
SEC. 14, T5N, R68W
FOUND 2 1/2" ALUM. CAP
P.L.S. NO. 38065

W. 1/4 COR.
SEC. 14, T5N, R68W
FOUND 2 1/2" ALUM. CAP
P.L.S. NO. 38065

E. 1/4 COR.
SEC. 14, T5N, R68W
FOUND 3 1/4" ALUM. CAP
P.L.S. NO. 34176

S 89°17'05" W
2651.64' (M)

S 89°16'46" W
2646.58' (M)

S 89°45'14" W 12869' GRID
N 89°53'08" W TRUE
S 81°56'14" W MAGNETIC

S. 1/16 COR.
SEC. 13 & SEC. 14
T5N, R68W
FOUND 2 1/2" ALUM. CAP
P.L.S. NO. 37065

CS. 1/16 COR.
SEC. 14, T5N, R68W
FOUND 2" ALUM. CAP
P.L.S. NO. 20676

MATCH LINE
SEE SHEET 1

E. 1/16 COR.
SEC. 14 & SEC. 23
T5N, R68W
FOUND 3 1/4" ALUM. CAP
P.L.S. NO. 16847

SE. COR.
SEC. 14, T5N, R68W
FOUND 2" ALUM. CAP
P.L.S. NO. 11989

SW. COR.
SEC. 14, T5N, R68W
FOUND 2 1/2" ALUM. CAP
P.L.S. NO. 12374

S 89°19'17" W 2623.47' (M)

S. 1/4 COR.
SEC. 14, T5N, R68W
FOUND 2 1/2" ALUM. CAP
P.L.S. NO. 38512

S 89°20'28" W
1325.94' (M)

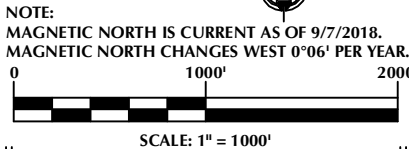
S 89°21'41" W
1330.46' (M)

CERTIFICATE OF SURVEYOR:

THIS IS TO CERTIFY THAT THE ABOVE PLAT WAS PREPARED FROM FIELD NOTES OF ACTUAL SURVEYS MADE BY ME OR UNDER MY SUPERVISION AND THAT THE SAME ARE TRUE AND CORRECT TO THE BEST OF MY KNOWLEDGE AND BELIEF. THIS CERTIFICATE DOES NOT REPRESENT A LAND SURVEY PLAT OR IMPROVEMENT SURVEY PLAT AS DEFINED BY C.R.S. 38-5-102 AND CANNOT BE RELIED UPON TO DETERMINE OWNERSHIP.

Randall K. French
38512
1/15/19
RANDALL K. FRENCH
PROFESSIONAL LAND SURVEYOR
COLORADO REGISTRATION NUMBER 38512

NOTICE:
ACCORDING TO COLORADO STATE LAW YOU MUST READ THIS CERTIFICATE OF SURVEY AND TAKE LEGAL ACTION BASED UPON ANY DEFECT IN THIS SURVEY WITHIN THREE YEARS AFTER YOU FIRST DISCOVER SUCH DEFECT. IN NO EVENT MAY ANY ACTION BASED UPON ANY DEFECT IN THIS SURVEY BE COMMENCED MORE THAN TEN YEARS FROM THE DATE ON THE CERTIFICATION SHOWN HEREON.



NOTES:

- ▲ INDICATES SECTION CORNER.
- INDICATES CALCULATED CORNER.
- ELEVATION BASED ON NAVD88 (GEOID12B).
- BASIS OF BEARING DERIVED FROM COLORADO COORDINATE SYSTEM OF 1983 NORTH ZONE.
- ALL MEASURED DISTANCES ARE GRID.
COMBINED SCALE FACTOR: .99972603 CALCULATED FROM THE NE. CORNER OF SECTION 18, T5N, R67W.
- OPERATOR: PRESTON KNUSTEN / PDOP = 1.9.
- SEE ADDENDUM TO WELL LOCATION CERTIFICATE FOR EXISTING IMPROVEMENTS WITHIN 500' OF THE WELL PAD.
- WELL FOOTAGES ARE MEASURED AT RIGHT ANGLES TO THE SECTION LINES.
- THE BOTTOM OF HOLE BEARS S89°45'14"W, 12869' FROM THE HEEL LOCATION.

WELL PAD - DAMORE 5-18HZ

DAMORE 18-7HZ
WELL LOCATION CERTIFICATE
2236' FNL & 710' FWL LOT 2 (SWNW) (SURFACE)
LOCATED IN SECTION 18, T5N, R67W, 6TH P.M.
WELD COUNTY, COLORADO
2124' FSL & 75' FEL NESE (HEEL)
LOCATED IN SECTION 13
2105' FSL & 2157' FEL NWSE (BOTTOM)
LOCATED IN SECTION 15, T5N, R68W, 6TH P.M.
LARIMER COUNTY, COLORADO

**Kerr-McGee Oil &
Gas Onshore L.P.**
1099 18th Street
Denver, Colorado 80202



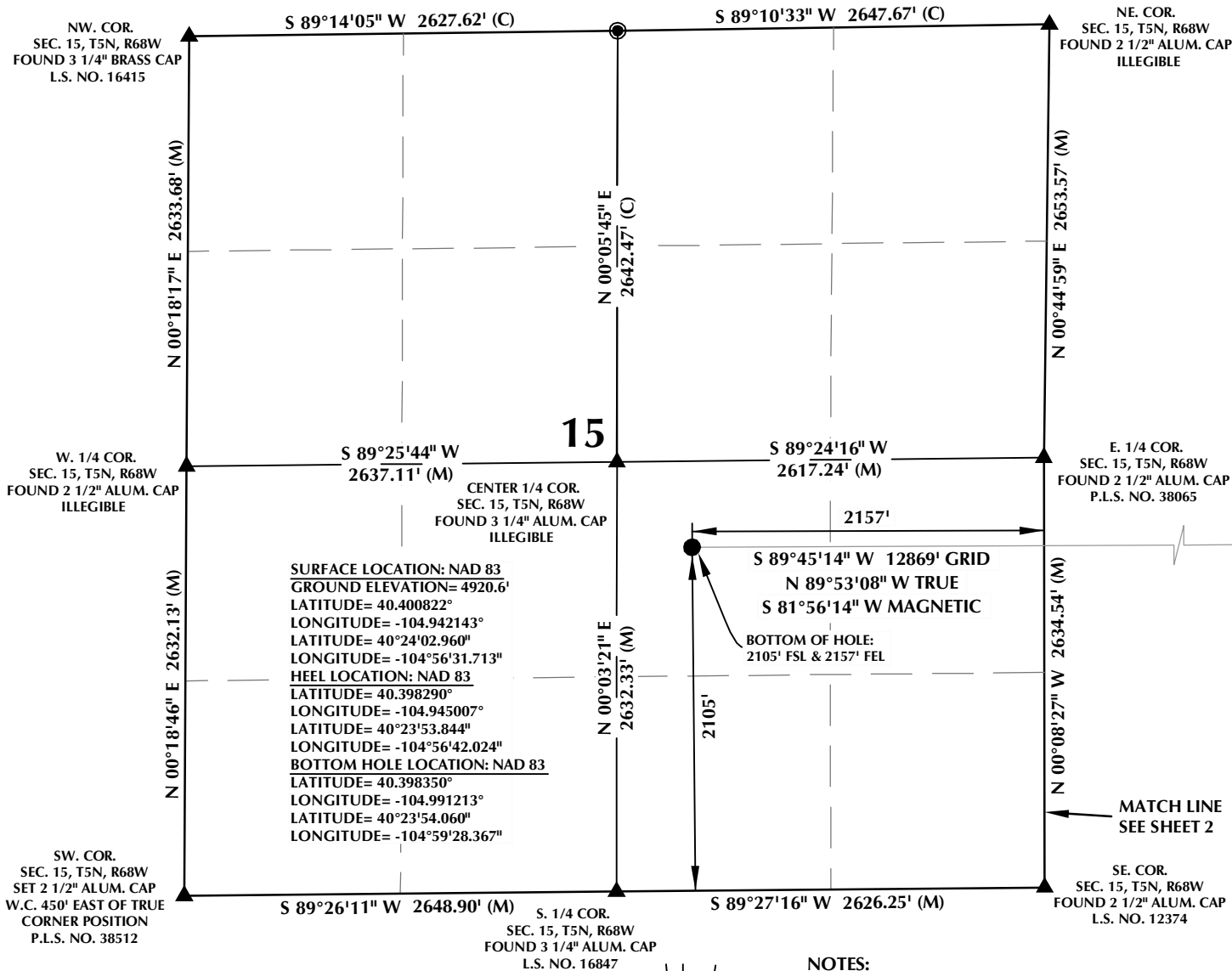
CONSULTING, LLC

SHERIDAN OFFICE
1095 Saberton Avenue
Sheridan, Wyoming 82801
Phone 307-674-0609

LOVELAND OFFICE
6706 North Franklin Avenue
Loveland, Colorado 80538
Phone 970-776-4331

DRAFTED BY:	LMO	CHECKED BY:	RKF	SHEET NO:
DATE DRAFTED:	10/8/18	DATE SURVEYED:	9/7/18	2
REVISED:	1/15/19	FILE NAME:	16-54	2 OF 3

T5N, R68W

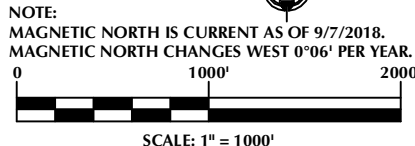


CERTIFICATE OF SURVEYOR:

THIS IS TO CERTIFY THAT THE ABOVE PLAT WAS PREPARED FROM FIELD NOTES OF ACTUAL SURVEYS MADE BY ME OR UNDER MY SUPERVISION AND THAT THE SAME ARE TRUE AND CORRECT TO THE BEST OF MY KNOWLEDGE AND BELIEF. THIS CERTIFICATE DOES NOT REPRESENT A LAND SURVEY PLAT OR IMPROVEMENT SURVEY PLAT AS DEFINED BY C.R.S. 38-5-102 AND CANNOT BE RELIED UPON TO DETERMINE OWNERSHIP.

Randall K. French
 RANDALL K. FRENCH
 PROFESSIONAL LAND SURVEYOR
 COLORADO REGISTRATION NUMBER 38512
 1/15/19

NOTICE:
 ACCORDING TO COLORADO STATE LAW YOU MUST READ THIS NOTICE OF CERTIFICATION OF SURVEYOR'S ACTION BASED UPON ANY DEFECT IN THIS SURVEY WITHIN THREE YEARS AFTER YOU FIRST DISCOVER SUCH DEFECT. IN NO EVENT MAY ANY ACTION BASED UPON ANY DEFECT IN THIS SURVEY BE COMMENCED MORE THAN TEN YEARS FROM THE DATE ON THE CERTIFICATION SHOWN HEREON.



NOTES:

- ▲ INDICATES SECTION CORNER.
- INDICATES CALCULATED CORNER.
- ELEVATION BASED ON NAVD88 (GEOID12B).
- BASIS OF BEARING DERIVED FROM COLORADO COORDINATE SYSTEM OF 1983 NORTH ZONE.
- ALL MEASURED DISTANCES ARE GRID.
 COMBINED SCALE FACTOR: .99972603 CALCULATED FROM THE NE. CORNER OF SECTION 18, T5N, R67W.
- OPERATOR: PRESTON KNUSTEN / PDOP = 1.9.
- SEE ADDENDUM TO WELL LOCATION CERTIFICATE FOR EXISTING IMPROVEMENTS WITHIN 500' OF THE WELL PAD.
- WELL FOOTAGES ARE MEASURED AT RIGHT ANGLES TO THE SECTION LINES.
- THE BOTTOM OF HOLE BEARS S89°45'14"W, 12869' FROM THE HEEL LOCATION.

WELL PAD - DAMORE 5-18HZ

DAMORE 18-7HZ
WELL LOCATION CERTIFICATE
 2236' FNL & 710' FWL LOT 2 (SWNW) (SURFACE)
 LOCATED IN SECTION 18, T5N, R67W, 6TH P.M.
 WELD COUNTY, COLORADO
 2124' FSL & 75' FEL NESE (HEEL)
 LOCATED IN SECTION 13
 2105' FSL & 2157' FEL NWSE (BOTTOM)
 LOCATED IN SECTION 15, T5N, R68W, 6TH P.M.
 LARIMER COUNTY, COLORADO

**Kerr-McGee Oil &
 Gas Onshore L.P.**

**1099 18th Street
 Denver, Colorado 80202**



CONSULTING, LLC

SHERIDAN OFFICE
 1095 Saberton Avenue
 Sheridan, Wyoming 82801
 Phone 307-674-0609

LOVELAND OFFICE
 6706 North Franklin Avenue
 Loveland, Colorado 80538
 Phone 970-776-4331

DRAFTED BY:	LMO	CHECKED BY:	RKF	SHEET NO:
DATE DRAFTED:	10/8/18	DATE SURVEYED:	9/7/18	3
REVISED:	1/15/19	FILE NAME:	16-54	3 OF 3