

LITHOLOGY STRIP LOG
WellSight Systems
Scale 1:240 (5"=100') Imperial
Measured Depth Log

Well Name:	Depositor 28-27-2H		
API:	05-123-47488		
Location:	Weld Co., CO		
License Number:	11/4/2019	Region:	DJ Basin
Surface Coordinates:	374 FNL 550 FEL T11N R66W S29	Drilling Completed:	11/12/19
Bottom Hole Coordinates:	980 FNL 600 FEL T11N R66W S27		
Ground Elevation (ft):	5643'	K.B. Elevation (ft):	5666'
Type of Drilling Fluid:	1558' Formation: Pierre-Codell	Total Depth (ft):	18400'
Log of Drilling Fluid:		Oil/Brine 75/25	

OPERATOR

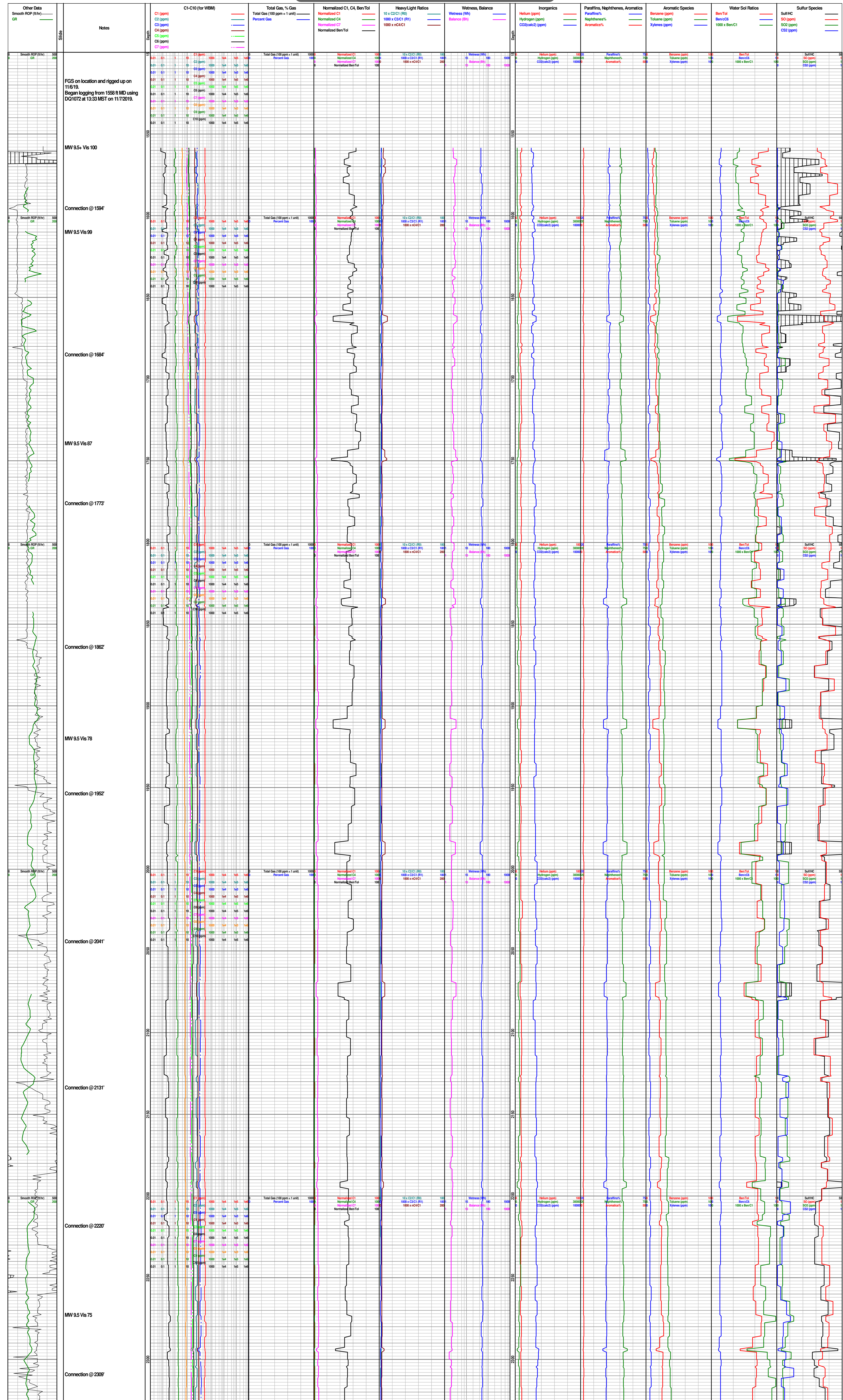
Company: Edge Energy
Address: 1301 Washington Ave. Suite 300
Golden, CO
80401

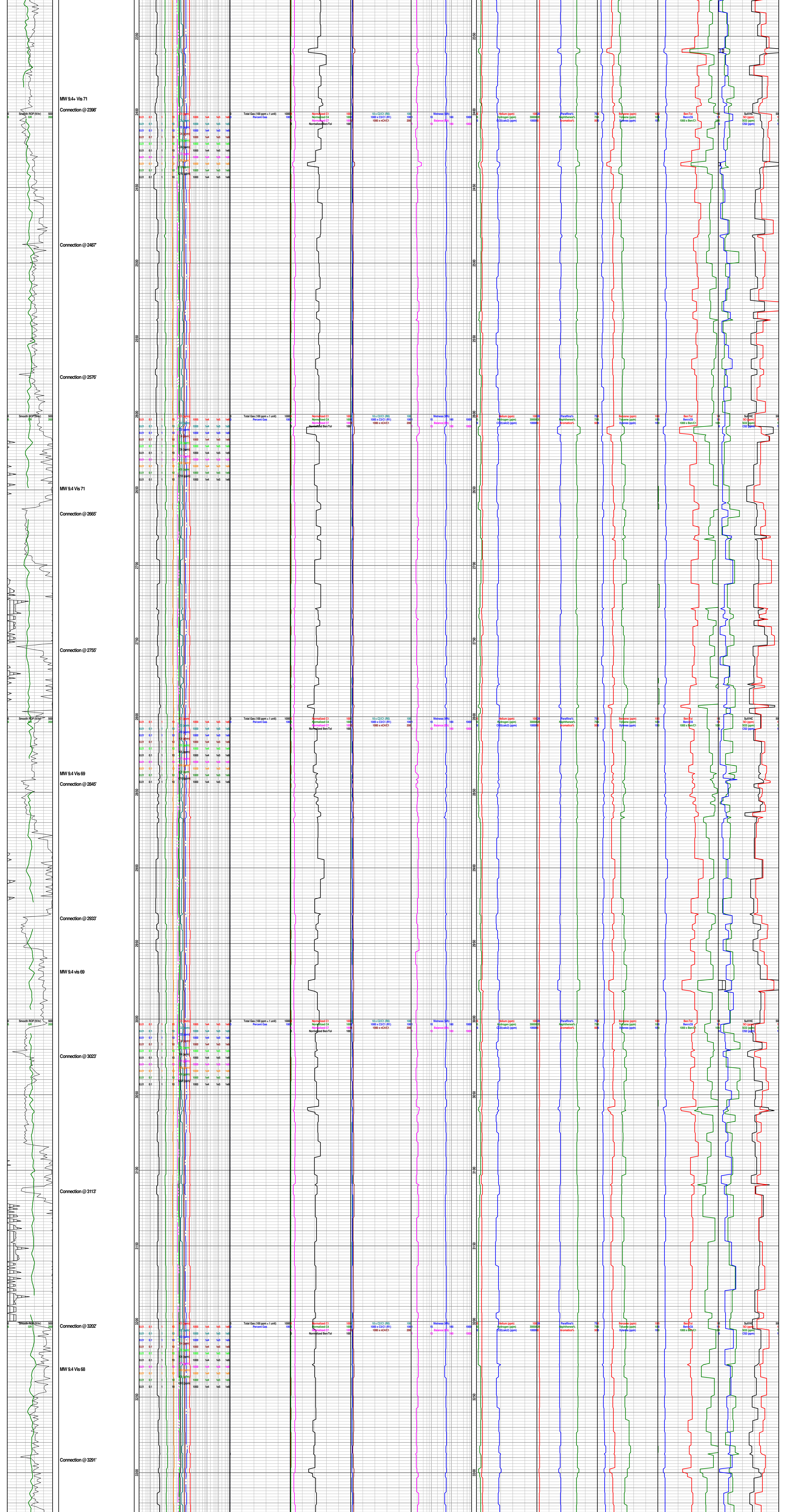
GEOLOGIST

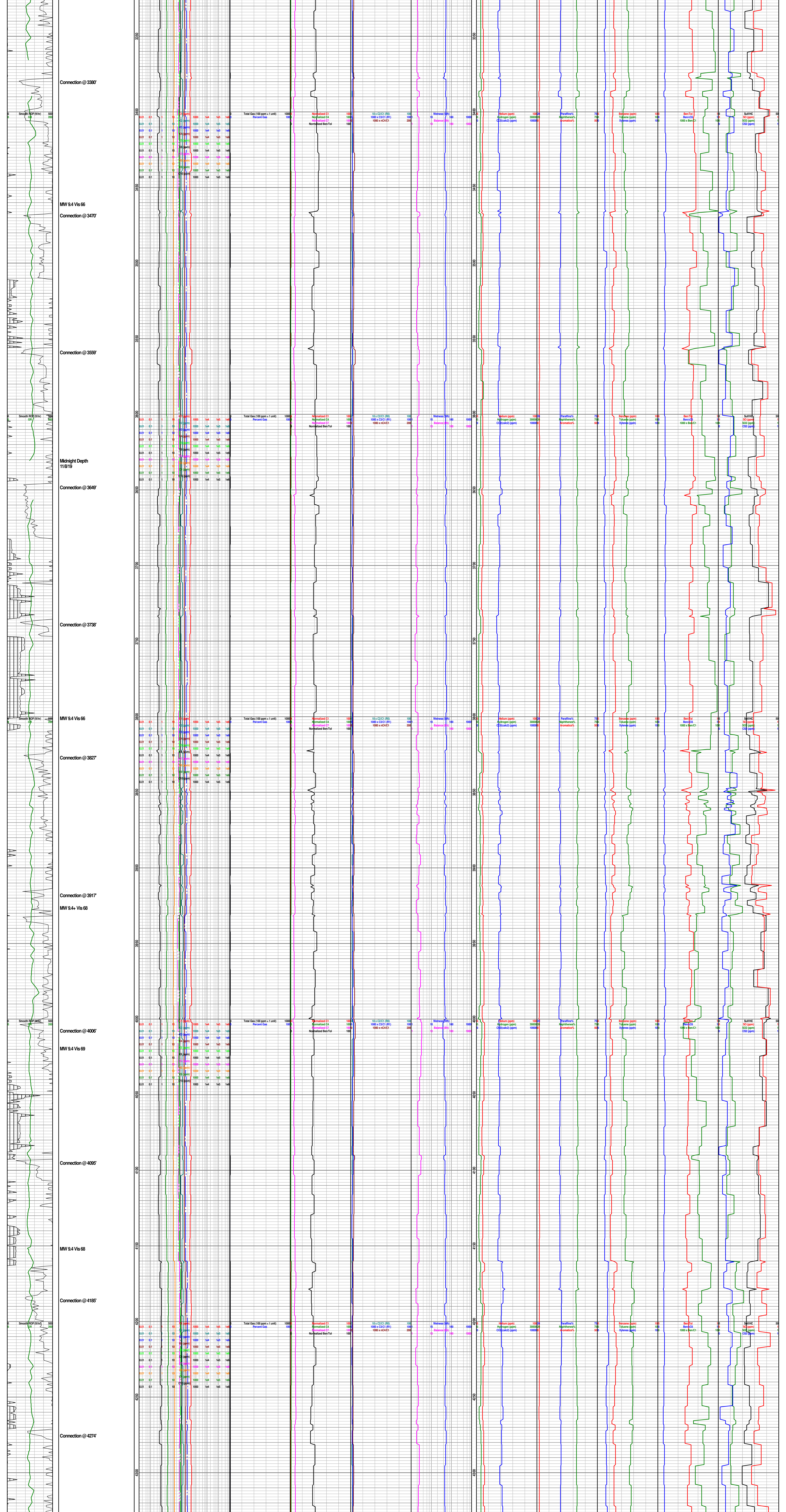
Name: Shane Nicklaus
Company: Field Geo Services
Address: 533 Bogart Lane, Unit A
Grand Junction, CO 81505

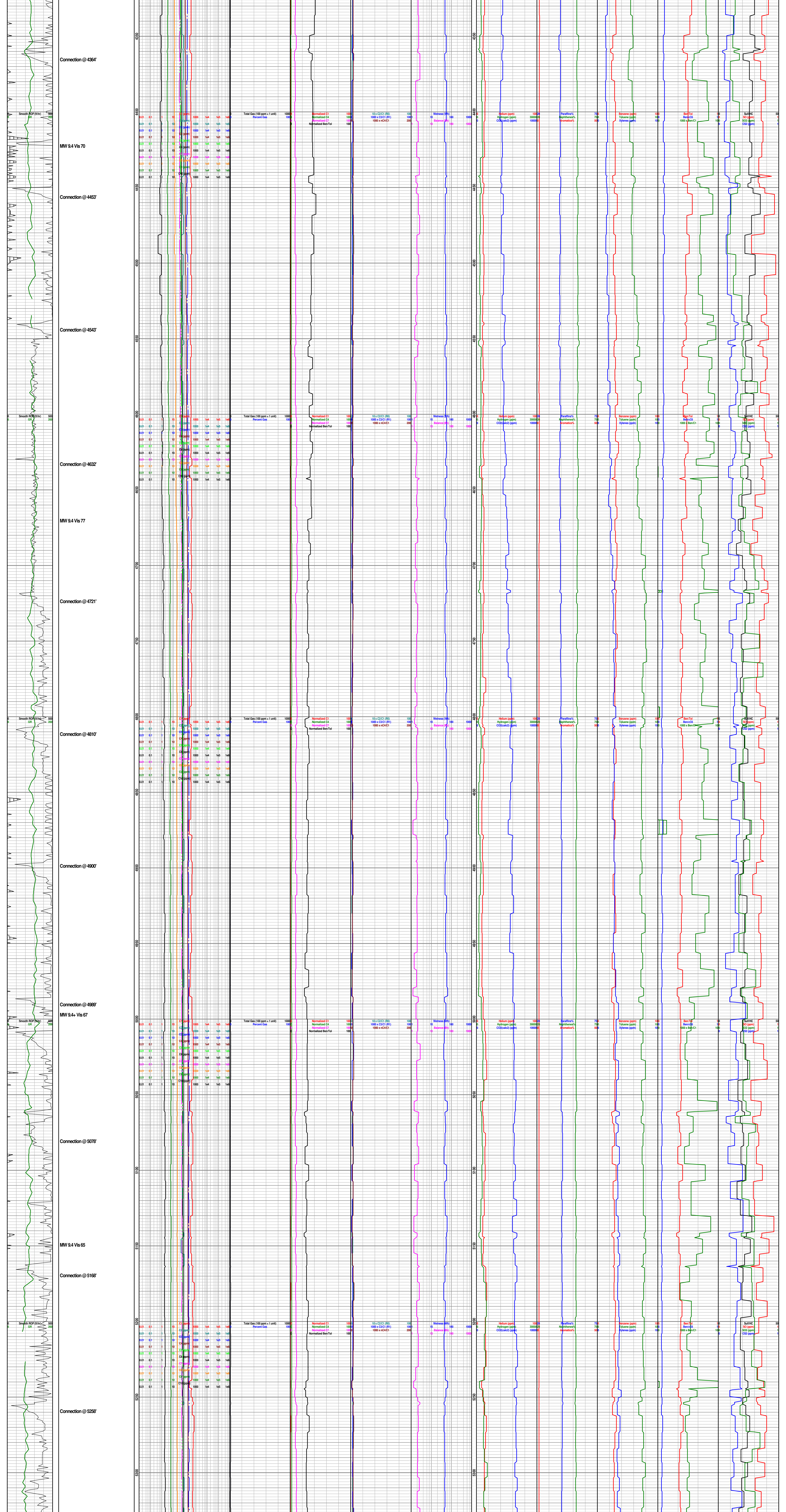
Comments

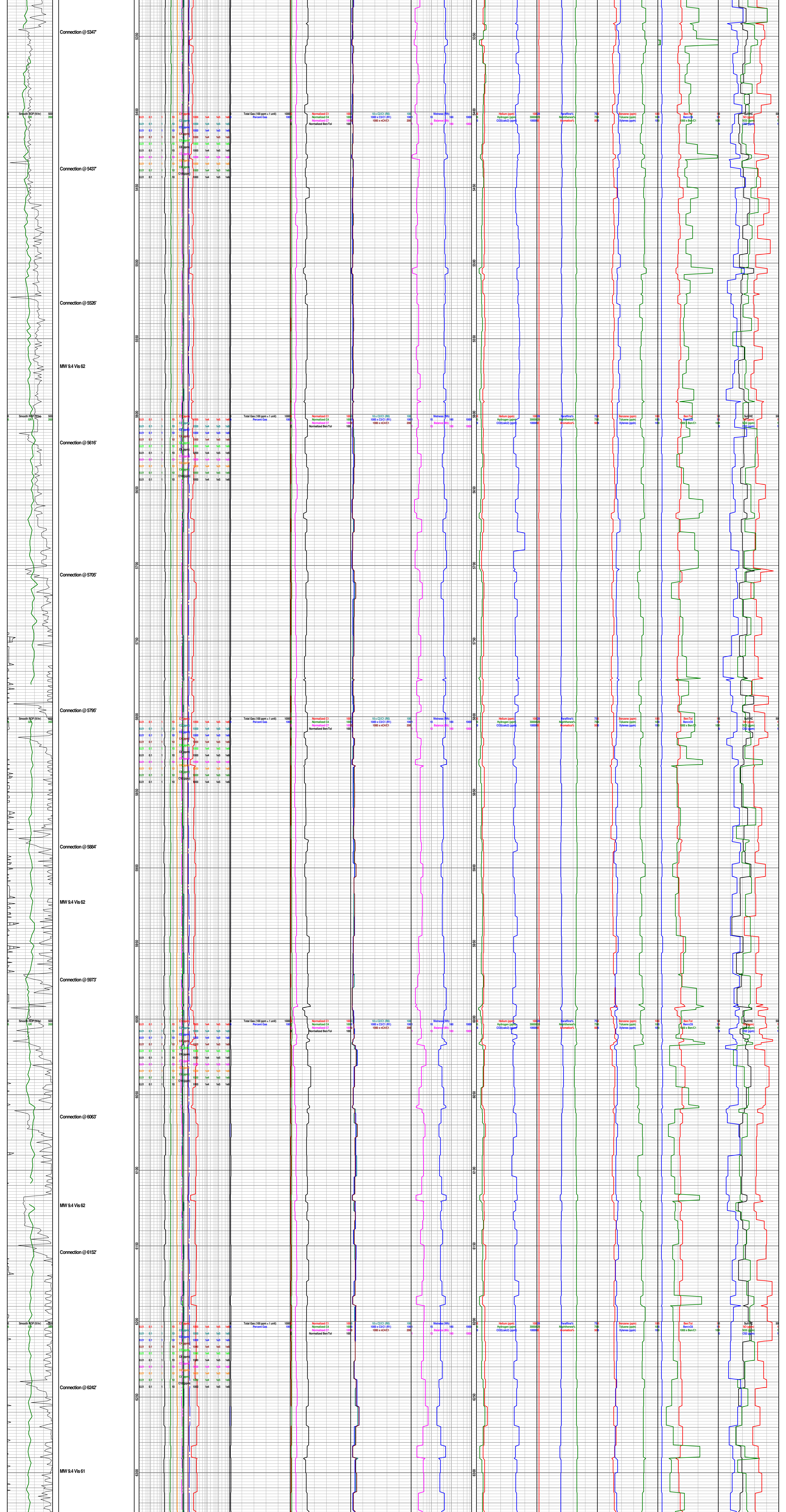
LOGGED WITH DQ1072

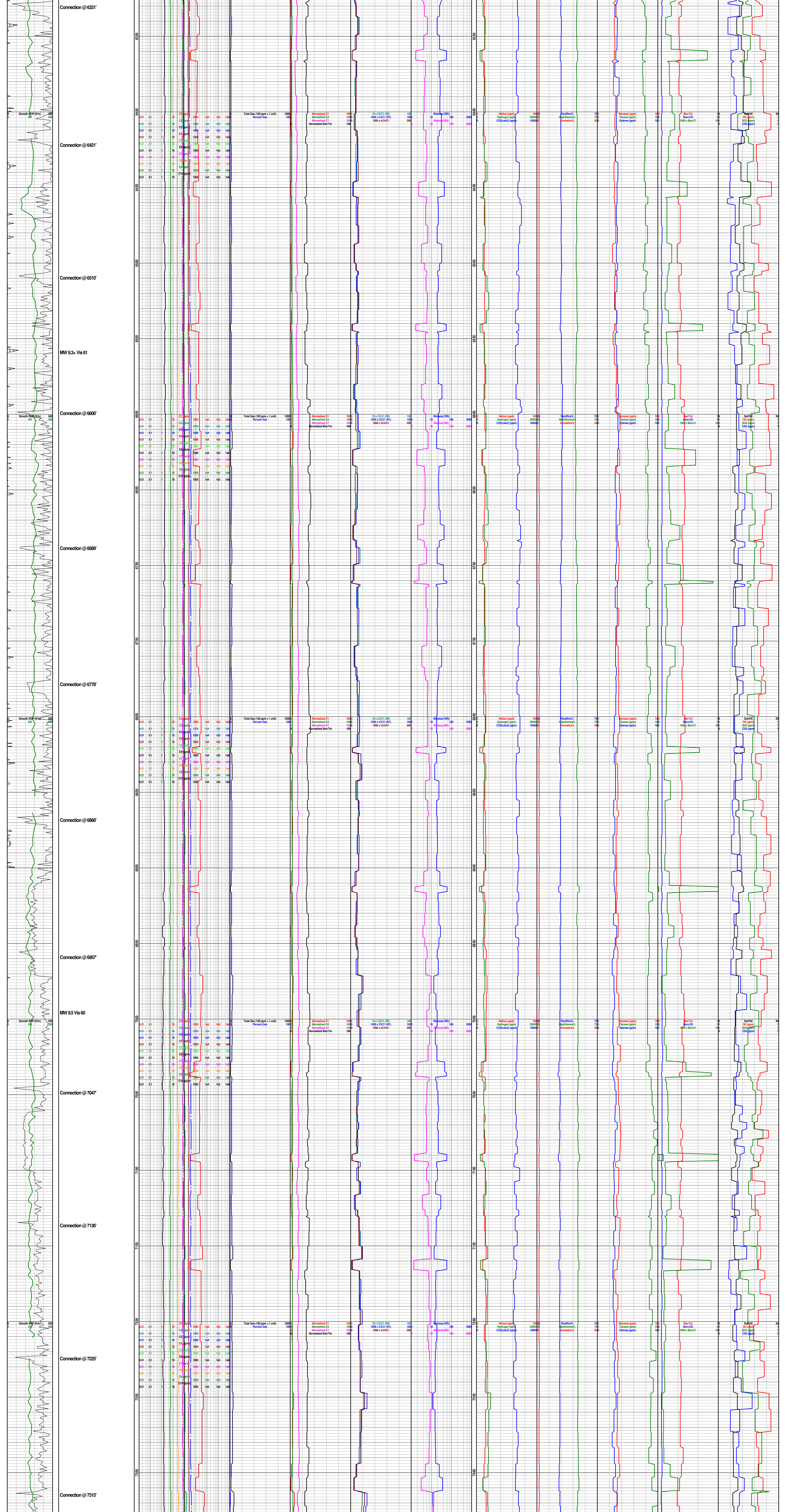


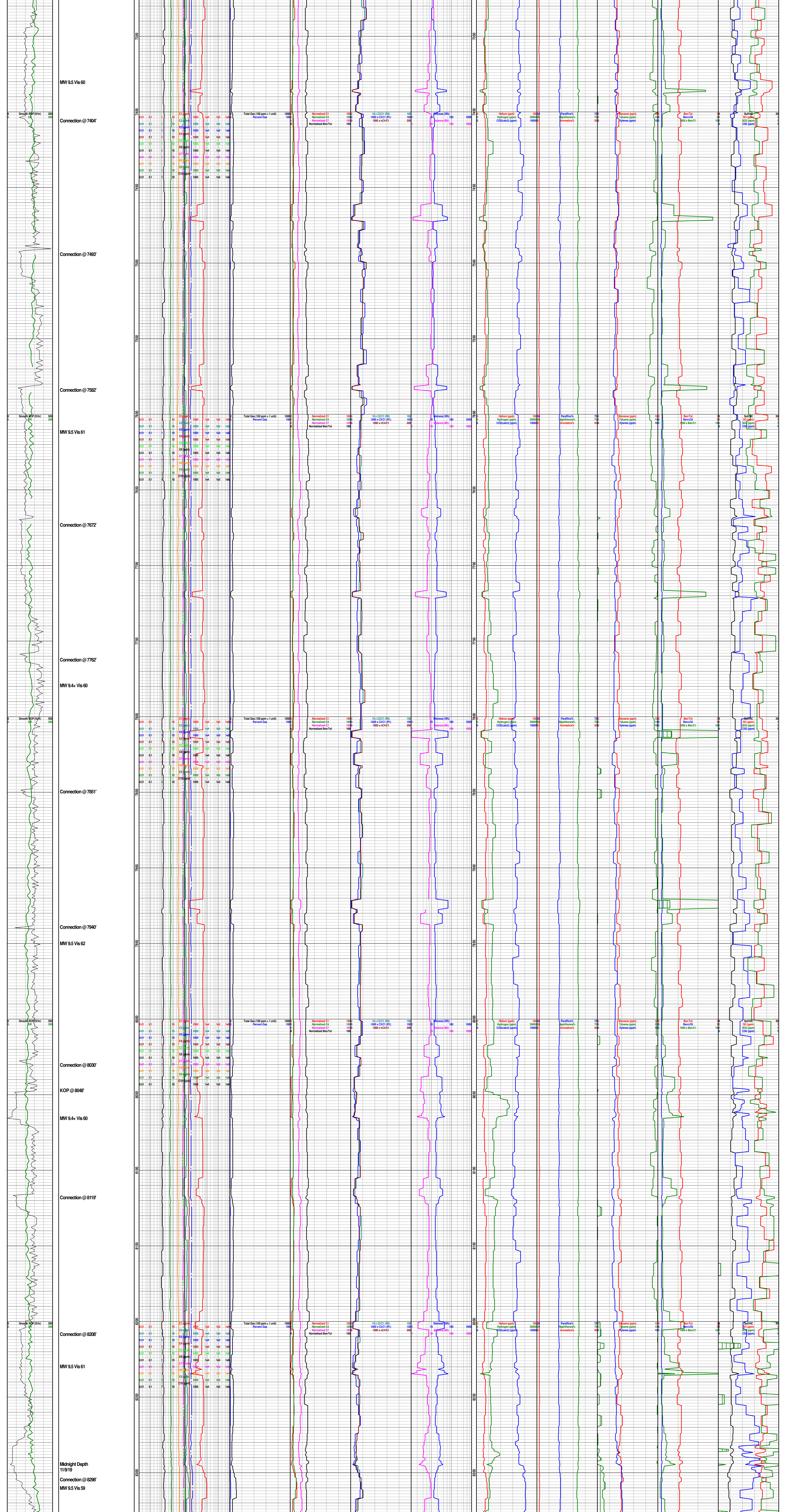


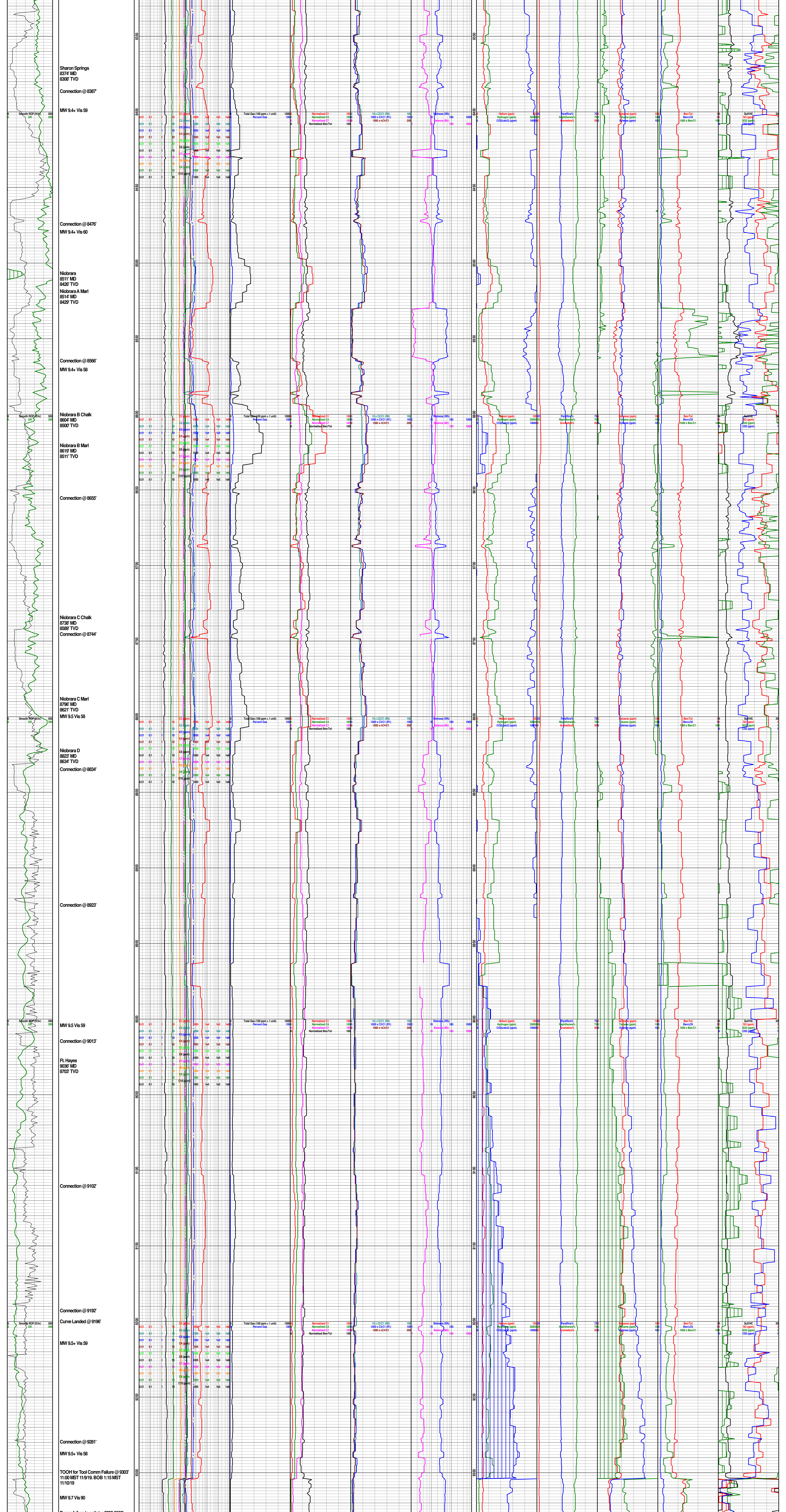












Power failure to agitator 5303-5503

Codell
9306 MD
8725 TVD

Connection @ 9371'

MW 9.5 Vis 66

MW 9.5 Vis 64

Connection @ 9551'

Connection @ 9641'

MW 9.5 Vis 61

Connection @ 9730'

Connection @ 9819'

MW 9.4+ Vis 58

Connection @ 9908'

MW 9.5 Vis 59

Connection @ 9999'

Connection @ 10088'

MW 9.5 Vis 57

Connection @ 10178'

Connection @ 10267'

