

Piceance Creek Unit T22X-8G

API: 05-103-10199

Inspection: 679706759



Photo 1. Location.

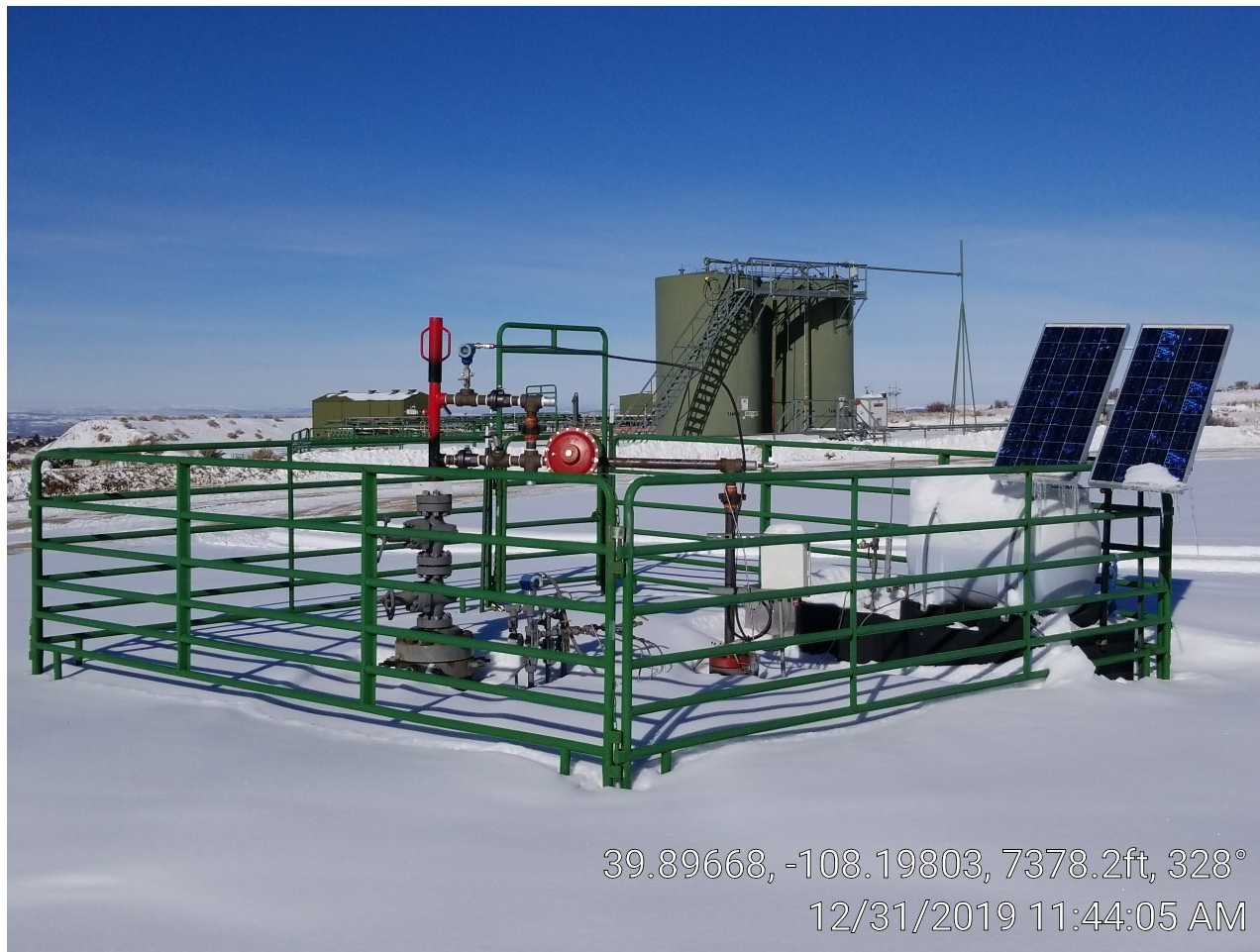


COLORADO
Oil & Gas Conservation
Commission
Department of Natural Resources

Piceance Creek Unit T22X-8G

API: 05-103-10199

Inspection: 679706759



39.89668, -108.19803, 7378.2ft, 328°

12/31/2019 11:44:05 AM

Photo 2. Well head.



COLORADO
Oil & Gas Conservation
Commission
Department of Natural Resources

Piceance Creek Unit T22X-8G

API: 05-103-10199

Inspection: 679706759



Photo 3. Separator.



COLORADO
Oil & Gas Conservation
Commission
Department of Natural Resources

Piceance Creek Unit T22X-8G

API: 05-103-10199

Inspection: 679706759



Photo 4. Tanks.



COLORADO
Oil & Gas Conservation
Commission
Department of Natural Resources