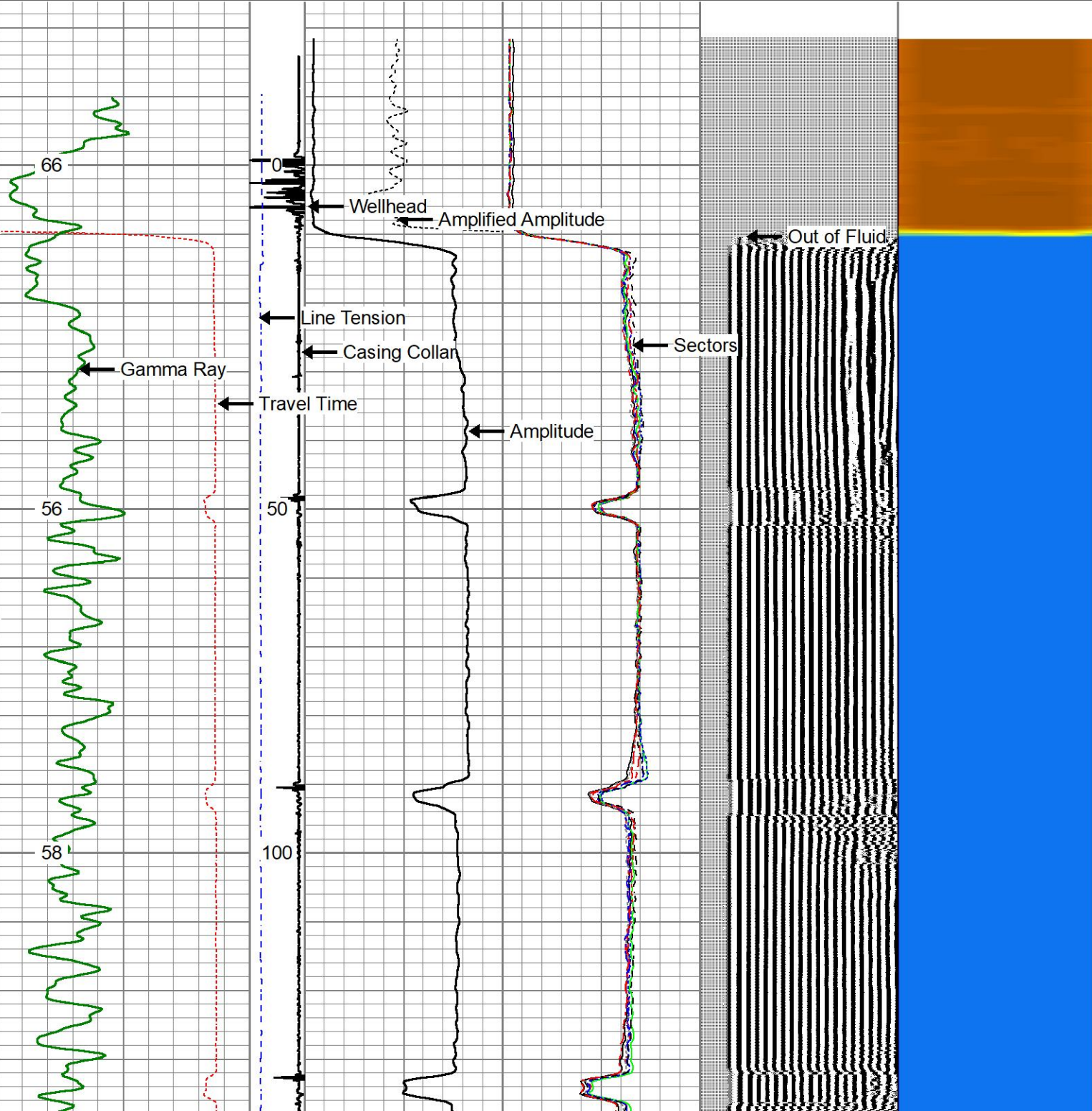
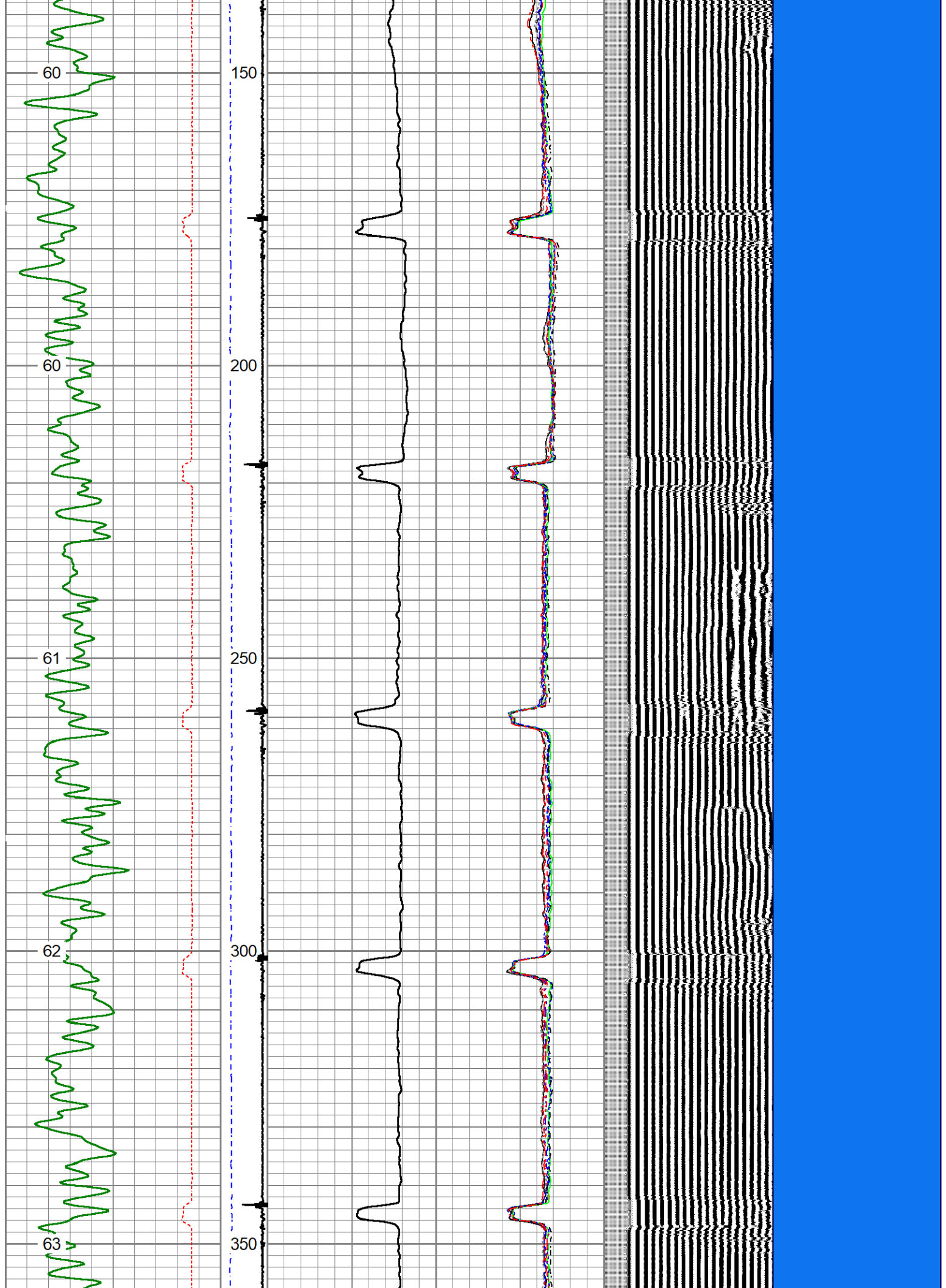
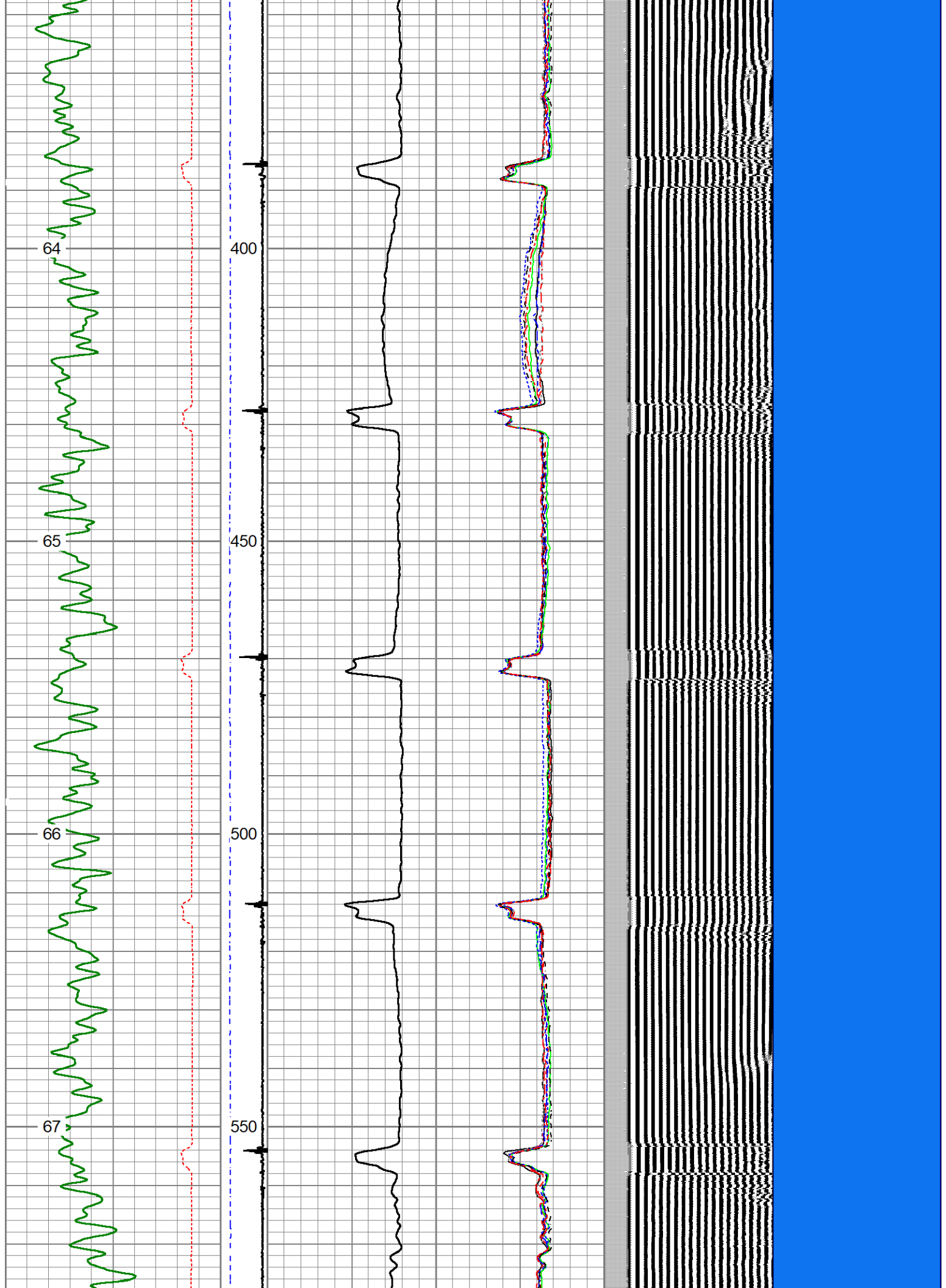
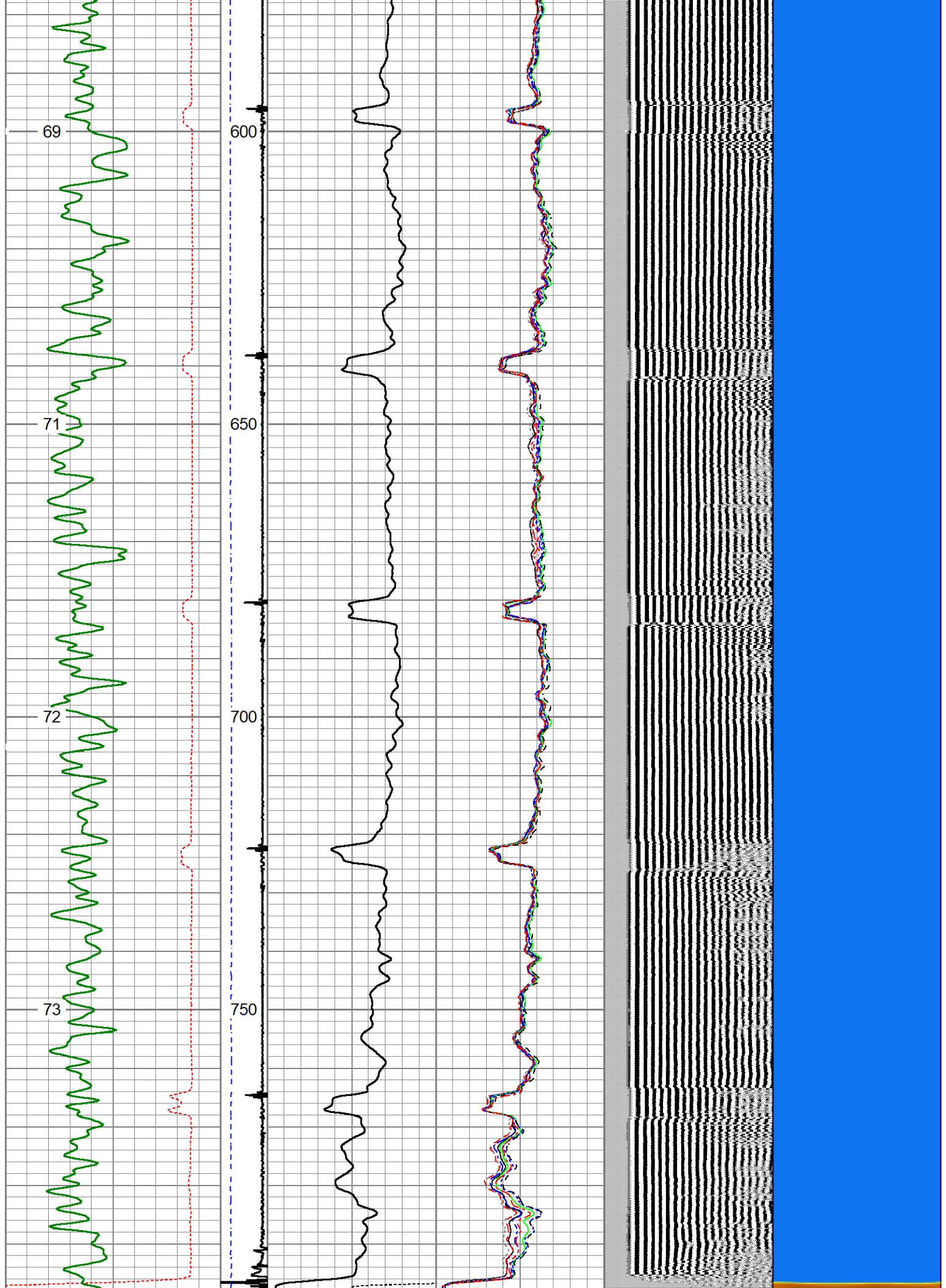


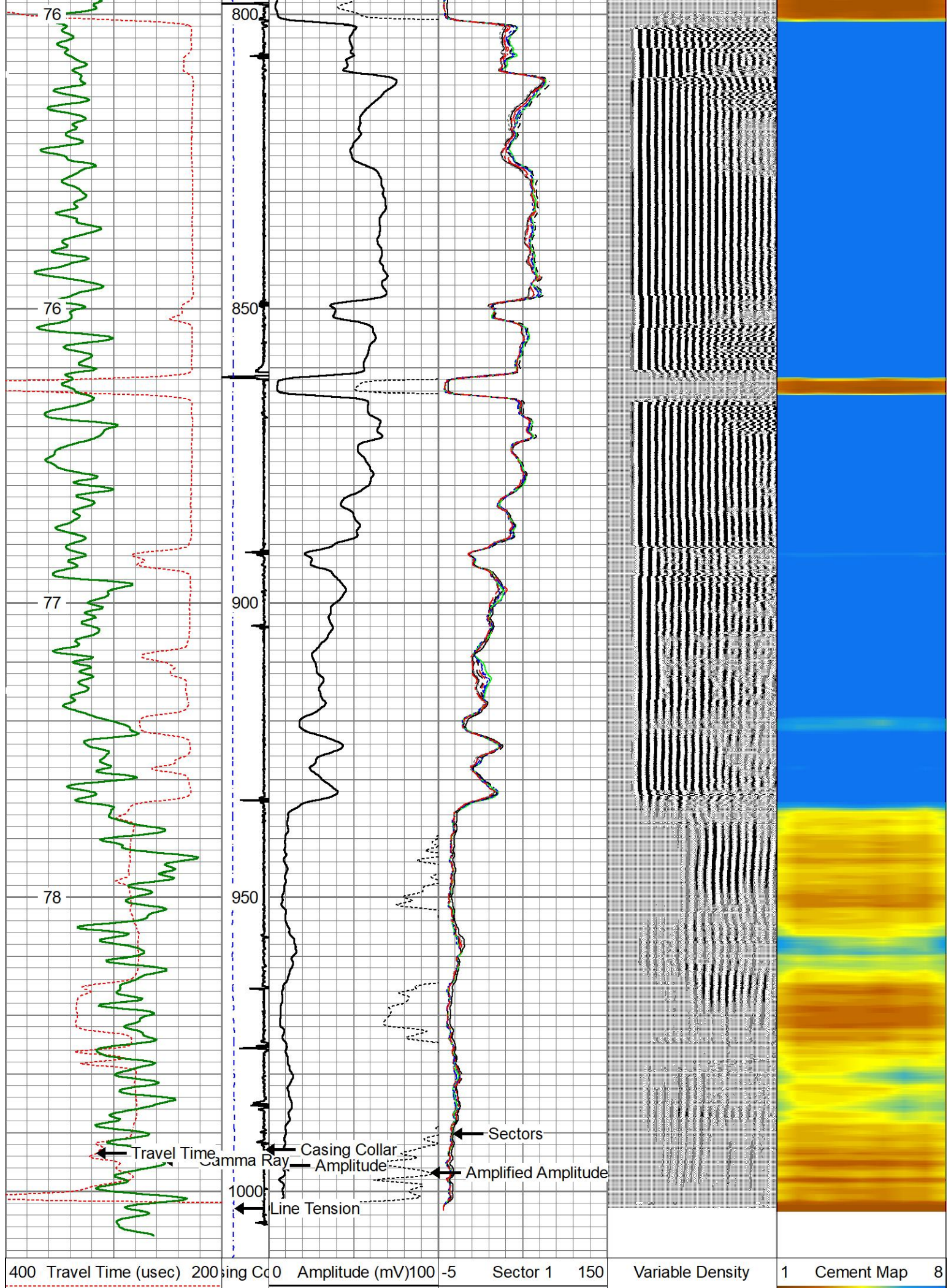
400	Travel Time (usec)	200	ing Co	0	Amplitude (mV)	100	-5	Sector 1	150	Variable Density	1	Cement Map	8
0	Gamma Ray (GAPI)	150	9	-1	Amplified Amplitude		-5	Sector 2	150	200	(usec)	1200	
TEMP			e Tens	0	(mV)	10	-5	Sector 3	150				
(degF)			(lb)				-5	Sector 4	150				
			(2000				-5	Sector 5	150				
							-5	Sector 6	150				
							-5	Sector 7	150				
							-5	Sector 8	150				












Gamma Ray (GAPI) 150	9	-1	Amplified Amplitude	-5	Sector 2	150	200	(usec)	1200
TEMP		e Tens	0	(mV)	10	-5	Sector 3	150	
(degF)		(lb)				-5	Sector 4	150	
		(2000				-5	Sector 5	150	
						-5	Sector 6	150	
						-5	Sector 7	150	
						-5	Sector 8	150	



REPEAT PASS - 5"/100'

0 PSI

Database File

Dataset Pathname

Presentation Format

Dataset Creation

Charted by

anadarko_p&alog_11-18-19.db

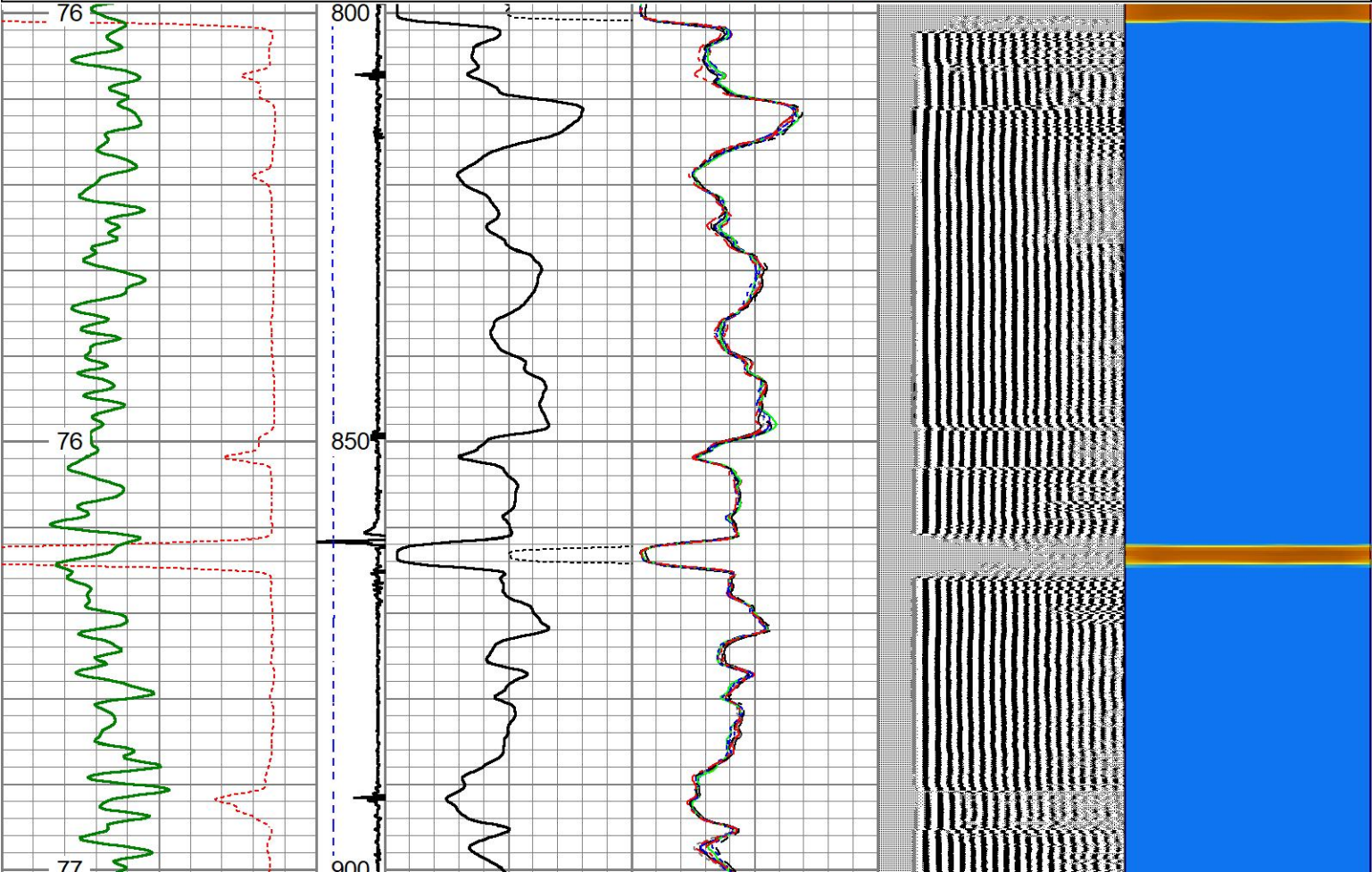
pass6

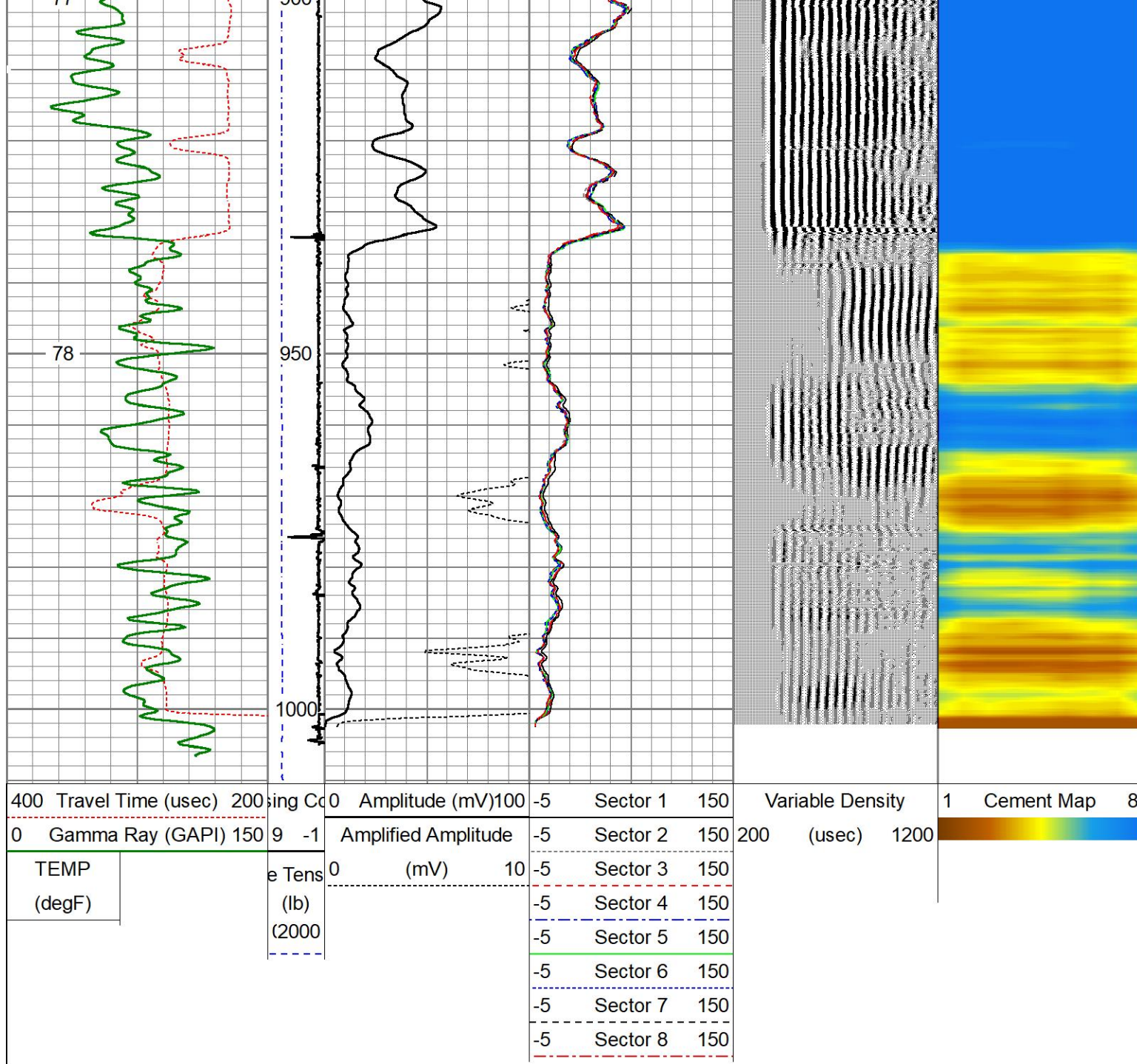
scbl03xogcolor

Mon Nov 18 12:57:43 2019

Depth in Feet scaled 1:240

400	Travel Time (usec)	200	ing Co	0	Amplitude (mV)	100	-5	Sector 1	150	Variable Density	1	Cement Map	8
0	Gamma Ray (GAPI) 150	9	-1		Amplified Amplitude		-5	Sector 2	150	200	(usec)	1200	
TEMP		e Tens	0	(mV)	10	-5	Sector 3	150					
(degF)		(lb)				-5	Sector 4	150					
		(2000				-5	Sector 5	150					
						-5	Sector 6	150					
						-5	Sector 7	150					
						-5	Sector 8	150					





Calibration Report						
Database File	anadarko_p&alog_11-18-19.db					
Dataset Pathname	pass7					
Dataset Creation	Mon Nov 18 13:01:16 2019					
Gamma Ray Calibration Report						
Type / Serial:			Probe275dig / 080828			
SHOP CALIBRATION		(Not Performed)				
	Counts/Sec.	Gain	Offset	Jig	Units	
Background	0.0				cps	
Calibrator	1.0				cps	
		1.0000			GAPI/cps	
PRIMARY VERIFICATION						
Background	0.0				cps	
Calibrator	0.0				cps	

Calibrator	0.0	0.0	cps
Difference			GAPI
BEFORE SURVEY VERIFICATION			
Background	0.0		cps
Calibrator	0.0		cps
Difference		0.0	GAPI
AFTER SURVEY VERIFICATION			
Background	0.0		cps
Calibrator	0.0		cps
Difference		0.0	GAPI

Segmented Cement Bond Log Calibration Report			
Serial Number:	FW1307-54		
Tool Model:	Probe 2.75 Radii W/Temp		
Calibration Casing Diameter:	4.500	in	
Calibration Depth:	259.933	ft	

Master Calibration, performed Mon Nov 18 12:52:24 2019:						
	Raw (v)		Calibrated (mv)		Results	
	Zero	Cal	Zero	Cal	Gain	Offset
3'	0.002	0.417	1.000	81.196	193.055	0.616
CAL	0.002	0.736				
5'	0.002	0.383	1.000	81.196	210.580	0.506
SUM						
S1	0.002	0.447	0.000	100.000	224.944	-0.535
S2	0.002	0.420	0.000	100.000	239.504	-0.561
S3	0.002	0.404	0.000	100.000	248.914	-0.589
S4	0.002	0.398	0.000	100.000	252.800	-0.611
S5	0.002	0.397	0.000	100.000	253.082	-0.599
S6	0.002	0.407	0.000	100.000	246.911	-0.591
S7	0.002	0.417	0.000	100.000	241.282	-0.580
S8	0.002	0.434	0.000	100.000	231.707	-0.498

Internal Reference Calibration, performed (Not Performed):						
	Raw (v)		Calibrated (v)		Results	
	Zero	Cal	Zero	Cal	Gain	Offset
CAL	0.000	0.000	0.002	0.736	1.000	0.000


Air Zero Calibration, performed Mon Nov 18 12:14:11 2019:			
	Raw (v)		Results
	Zero	Zero	Offset
3'	0.000	0.000	0.000
5'	0.000	0.000	0.000
SUM			
S1	0.000	0.000	0.000
S2	0.000	0.000	0.000
S3	0.000	0.000	0.000
S4	0.000	0.000	0.000
S5	0.000	0.000	0.000
S6	0.000	0.000	0.000
S7	0.000	0.000	0.000

S8

0.000

0.000

0.000

Sensor	Offset (ft)	Schematic	Description	Length (ft)	O.D. (in)	Weight (lb)	
HeadVolt	14.50		CHD-Titan Titan 1 7/16" GO Cablehead	1.00	1.44	5.00	
Temp	11.65						
WVFS8	9.42			RBT-Probe 2.75 Radii W/Temp (FW1307-54) Probe 2.75" Radial with Integral Temperature Sub	9.39	2.75	90.00
WVFS7	9.42						
WVFS6	9.42						
WVFS5	9.42						
WVFS4	9.42						
WVFS3	9.42						
WVFS2	9.42						
WVFS1	9.42						
WVFCAL	9.42						
WVF3FT	9.42						
WVF5FT	8.42						
CCL	5.44						
HEADVOLT	5.17						
				GR-Probe275dig (080828) HT Probe 2 3/4" Gamma CCL	5.17	1.69	57.00
GR	1.42						

Total length:	15.55 ft
Total weight:	152.00 lb
O.D.:	2.75 in