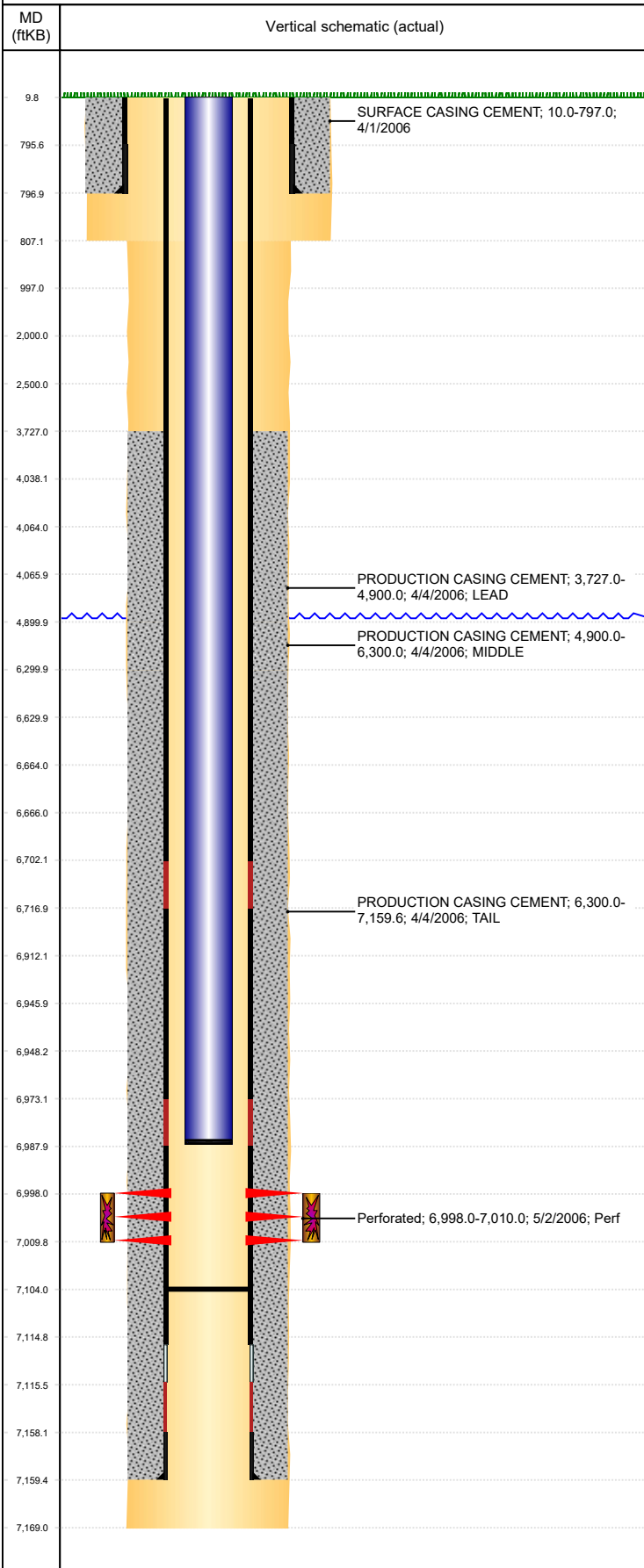


Well Name: GUTTERSEN D33-23

VERTICAL, ORIGINAL HOLE, 12/23/2019 11:32:04 AM



Well Header									
API 05-123-23720		Business Unit DJ BASIN		District 15		Well Config VERTICAL			
KB - GL / MSL (ft... 10.00		Spud Date 3/31/2006		P & A Date		Well Production Status PR			SoRT No
Comment DISCREPANCY: DR RPT TD 7169'; ST RPT TD 7152'. CEMENT COVERAGE SKETCHY 4534'-4950' & 5250'-5780', REFER TO CBL. VERY LITTLE DATA ON COMPLETION.									
Surface Location (Congressional)									
Qtr 3 NE	Qtr 4 SE	Section 33	Twnshp 3	Twnsh... N	Range 64	Rng E/... W	Actual Latitude (°) 40.17833969	Actual Longitude (°) -104.55174277	
Wellbore Sections									
Section Des		Size (in)		Act Top, MD (ftKB)		Act Btm, MD (ftKB)			
SURFACE		12 1/4		10		807			
PRODUCTION		7 7/8		807		7,169			
Casing Strings									
Csg Des		Run Date	OD (in)	Wt/Len (lb/ft)	Grade	Top, MD (ftKB)	MD (ftKB)		
Surface		4/1/2006	8 5/8	24.00	J-55	10.0	797.0		
Production		4/4/2006	4 1/2	11.60	M-80	10.0	7,159.6		
Cement									
Des			Start Date		Top (ftKB)		Btm (ftKB)		
SURFACE CASING CEMENT			4/1/2006		10.0		797.0		
PRODUCTION CASING CEMENT			4/4/2006		3,727.0		4,900.0		
PRODUCTION CASING CEMENT			4/4/2006		4,900.0		6,300.0		
PRODUCTION CASING CEMENT			4/4/2006		6,300.0		7,159.6		
Zone Statuses									
Zone Name	Status Date	Status	Fluid Type	Job			Prod Method		
CODELL	5/5/2006	PR	Oil				Flowing		
CODELL	3/15/2010	PR	Water				Flowing		
Perforation Data									
Linked Zone		Bnch/Stg	Entered Shot Total	Top (ftKB)		Btm (ftKB)		Date	
CODELL, ORIGINAL HOLE			48	6,998.00		7,010.00		5/2/2006	
Stimulation Intervals									
Zone			Start Date		Top (ftKB)		Btm (ftKB)		
CODELL, ORIGINAL HOLE			5/3/2006		6,998.0		7,010.0		
Other In Hole									
Run Date		Des			OD (in)	Top (ftKB)		Btm (ftKB)	
Logs									
Date		Type				Top, MD (ftKB)		Btm, MD (ftKB)	
4/4/2006		COMPENSATED DENSITY				3,700.0		7,149.0	
4/4/2006		INDUCTION				1,100.0		7,169.0	
4/13/2006		CEMENT BOND				3,600.0		7,103.0	
6/21/2017		GYRO				0.0		6,900.0	
Plug Back Total Depths									
Date		Type		Com				Depth (ftKB)	
4/4/2006		FLOAT COLLAR		TOP OF LATCH DOWN BAFFLE				7,115.0	
4/13/2006		FILL		DEPTH LOGGER ON CBL				7,104.0	