

Investment Equipment LLC, Kincheloe 1
121-09205

Inspection #688306575

12/22/2019

Spill



COLORADO

**Oil & Gas Conservation
Commission**

Department of Natural Resources



Colorado Oil and Gas Conservation Commission
39.80112, -103.06098, 4530.8ft, 328°
12/22/2019 03:11:18 PM



Colorado Oil and Gas Conservation Commission

39.80111, -103.06098, 4537.4ft, 16°

12/22/2019 03:11:22 PM



Colorado Oil and Gas Conservation Commission
39.8012, -103.06104, 4540.7ft, 86°
12/22/2019 03:11:53 PM



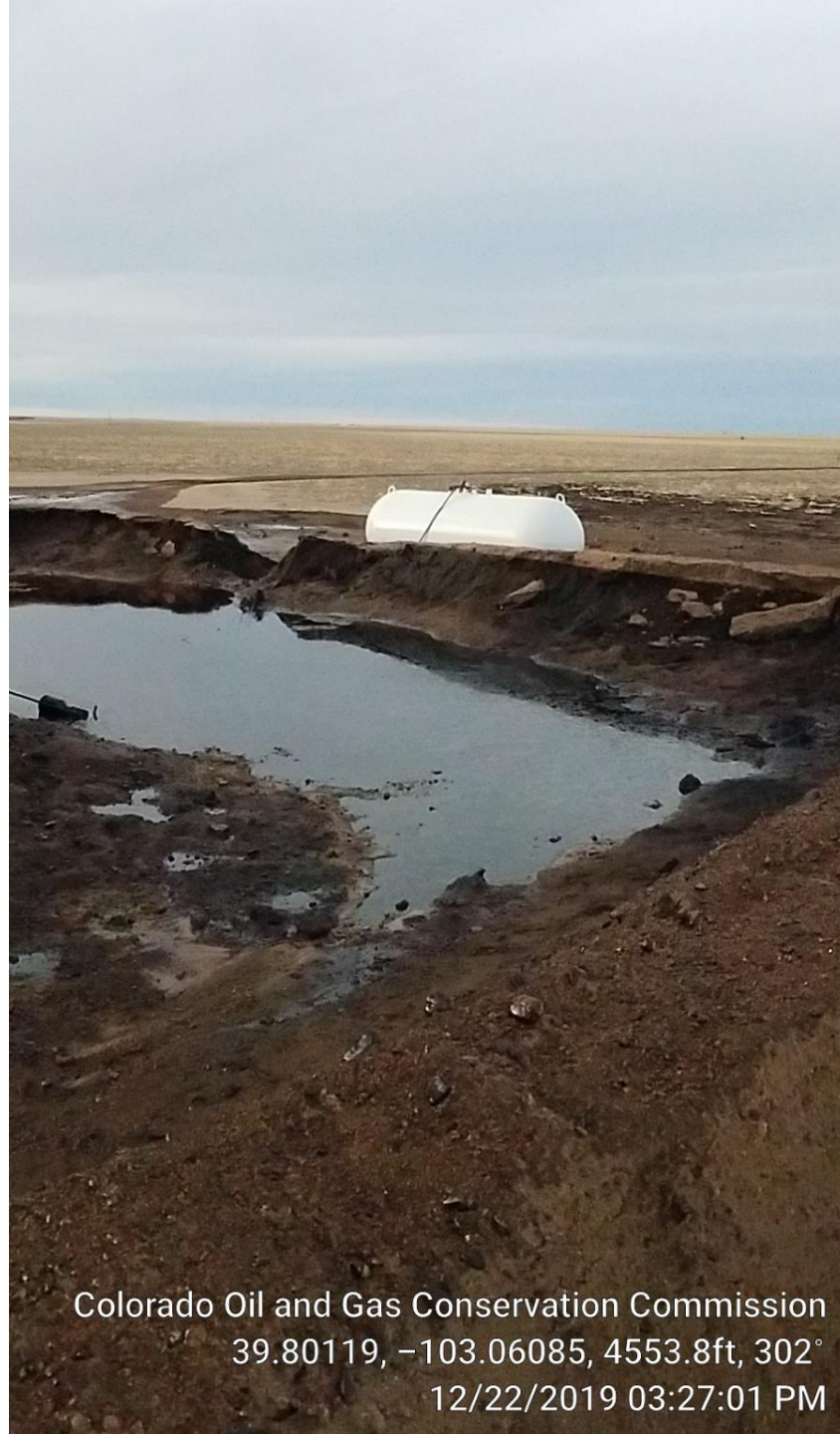
Colorado Oil and Gas Conservation Commission
39.80122, -103.06077, 4553.8ft, 265°
12/22/2019 03:26:49 PM



Colorado Oil and Gas Conservation Commission

39.80119, -103.06084, 4550.5ft, 249°


12/22/2019 03:26:59 PM



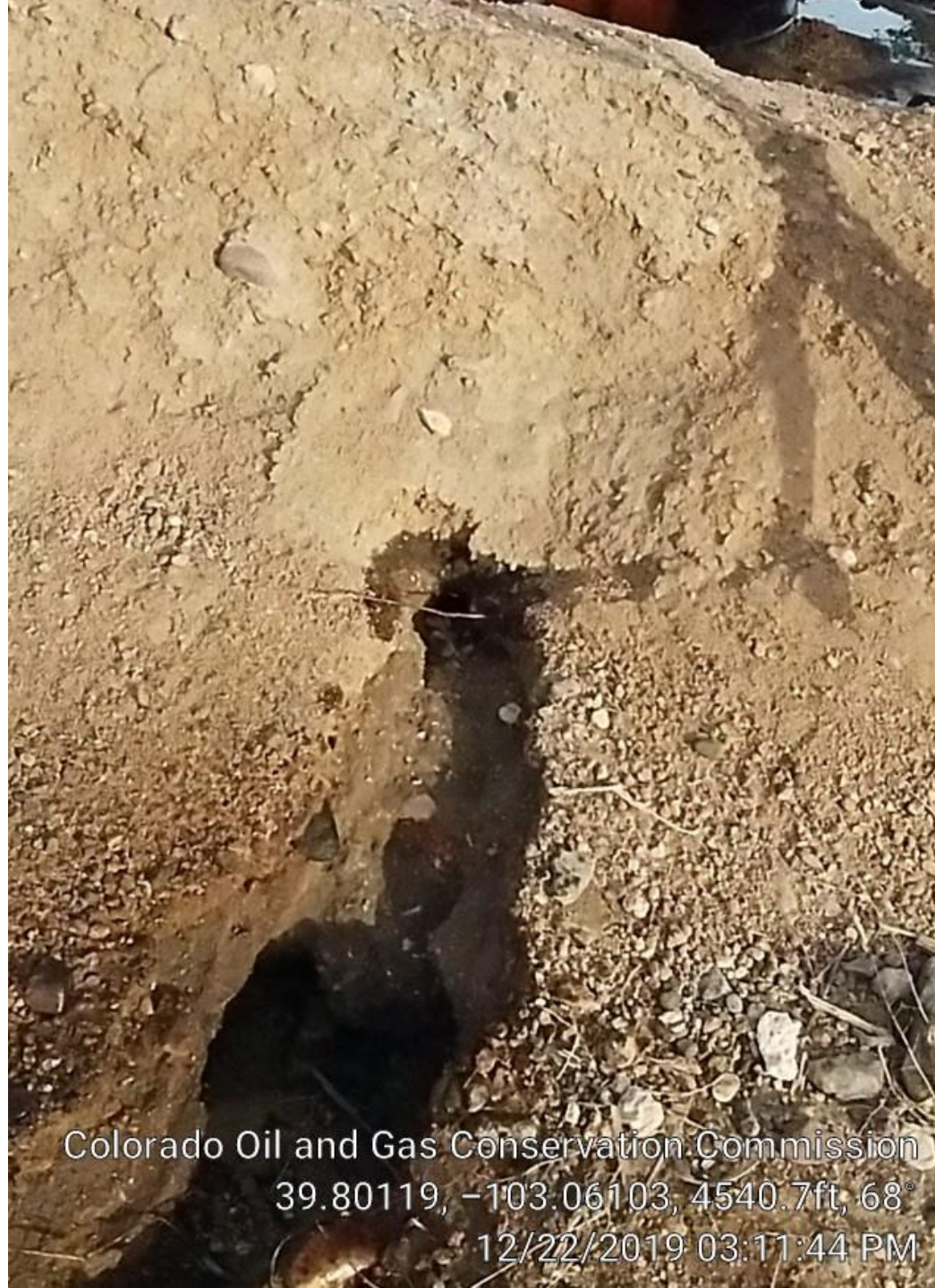
Colorado Oil and Gas Conservation Commission
39.80119, -103.06085, 4553.8ft, 302°
12/22/2019 03:27:01 PM



Colorado Oil and Gas Conservation Commission
39.80131, -103.06099, 4544.0ft, 113°
12/22/2019 03:12:13 PM



Colorado Oil and Gas Conservation Commission
39.80117, -103.06104, 4537.4ft, 12°
12/22/2019 03:11:38 PM



Colorado Oil and Gas Conservation Commission
39.80119, -103.06103, 4540.7ft, 68°
12/22/2019 03:11:44 PM



Colorado Oil and Gas Conservation Commission

39.80112, -103.06098, 4540.7ft, 17°

12/22/2019 03:11:25 PM



Colorado Oil and Gas Conservation Commission

39.80125, -103.06102, 4547.2ft, 16°

12/22/2019 03:12:00 PM



Colorado Oil and Gas Conservation Commission
39.80118, -103.06118, 4553.8ft, 42°
12/22/2019 03:16:02 PM



Colorado Oil and Gas Conservation Commission

39.80142, -103.06126, 4534.1ft, 355°

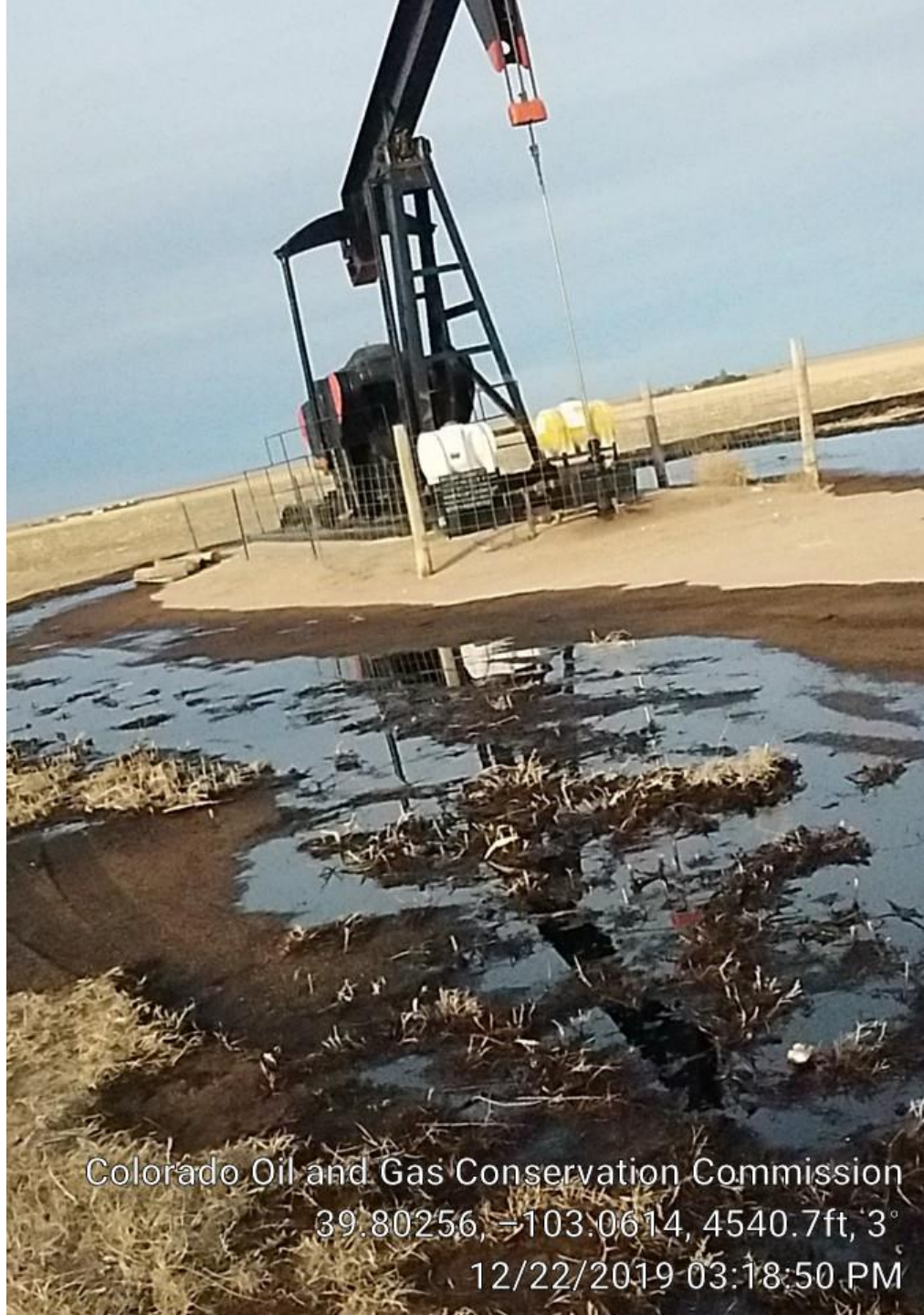
12/22/2019 03:16:50 PM



Colorado Oil and Gas Conservation Commission
39.80145, -103.06128, 4534.1ft, 141°
12/22/2019 03:16:58 PM



Colorado Oil and Gas Conservation Commission
39.80235, -103.06136, 4547.2ft, 9°
12/22/2019 03:18:29 PM



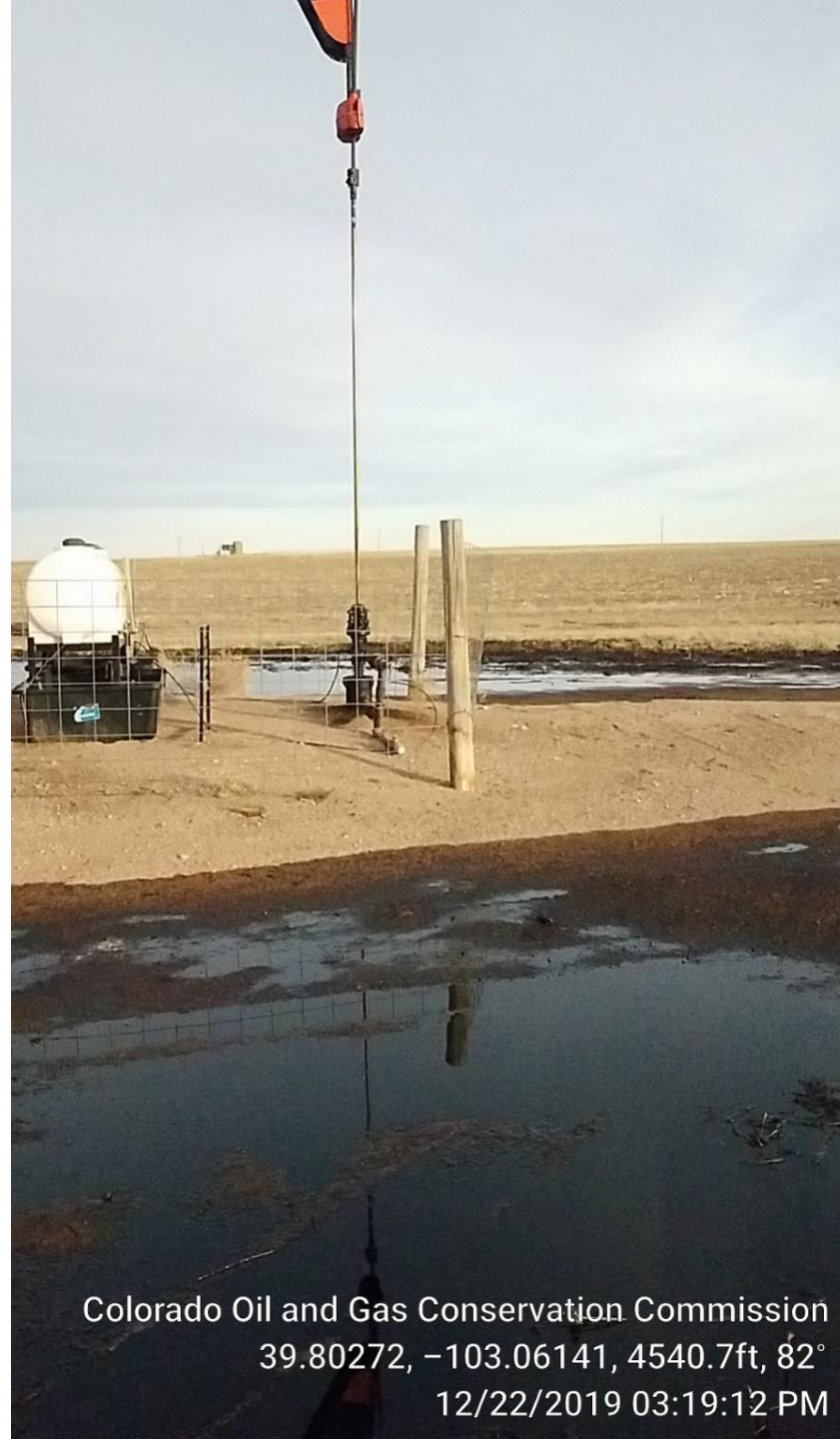
Colorado Oil and Gas Conservation Commission
39.80256, -103.0614, 4540.7ft, 3°
12/22/2019 03:18:50 PM



Colorado Oil and Gas Conservation Commission

39.80256, -103.06139, 4537.4ft, 81°

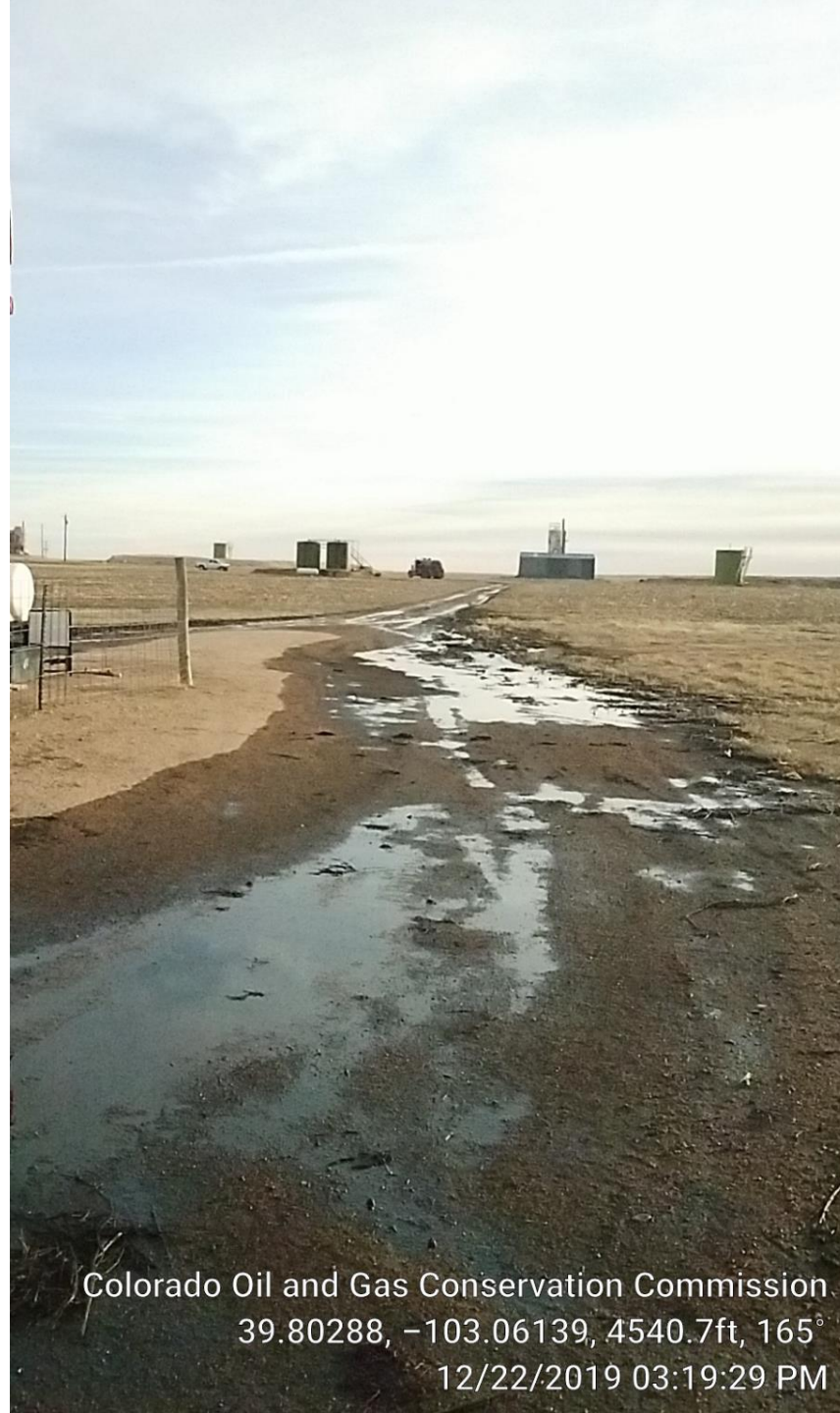
12/22/2019 03:18:52 PM



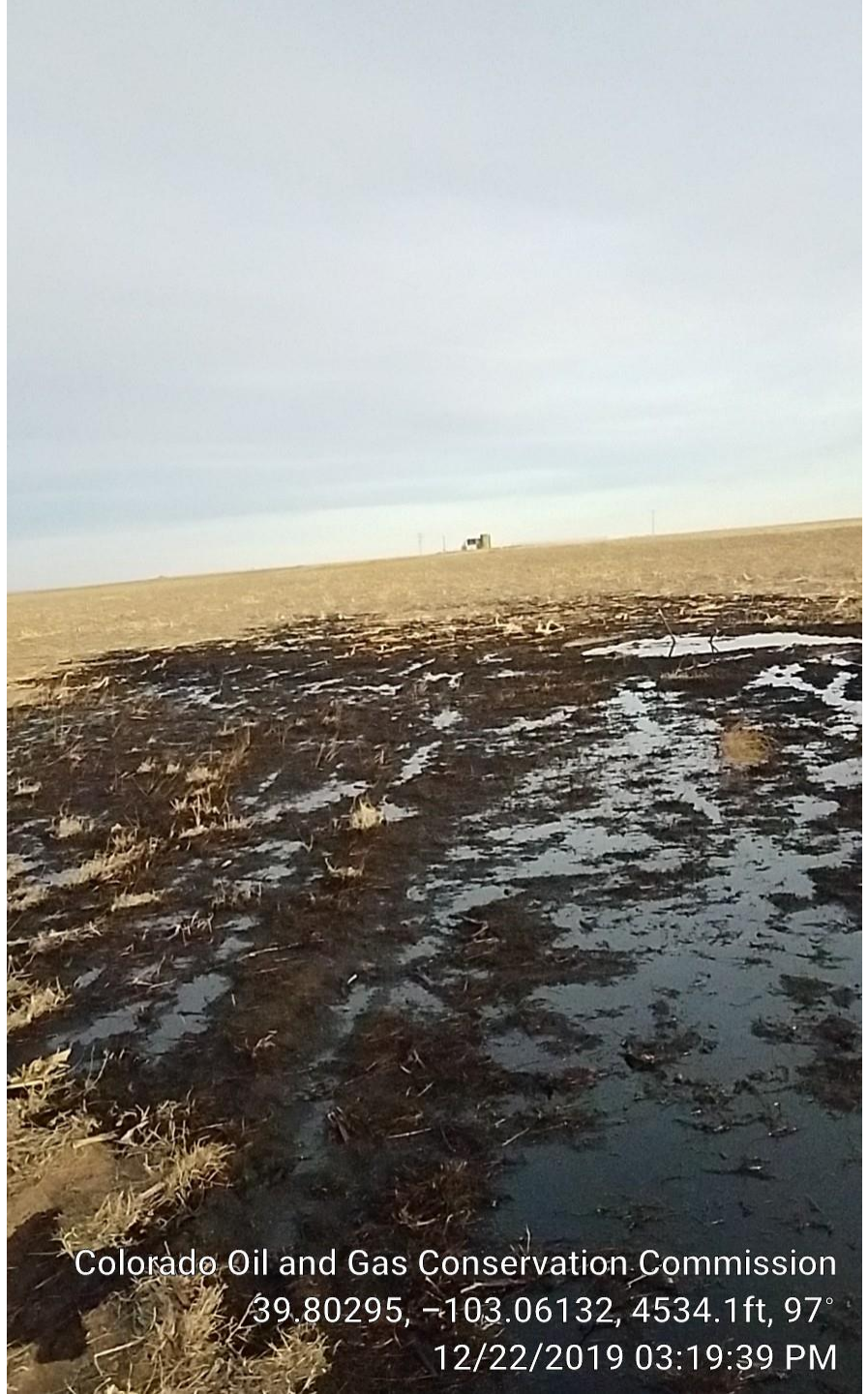
Colorado Oil and Gas Conservation Commission
39.80272, -103.06141, 4540.7ft, 82°
12/22/2019 03:19:12 PM



Colorado Oil and Gas Conservation Commission
39.80287, -103.06139, 4544.0ft, 68°
12/22/2019 03:19:27 PM



Colorado Oil and Gas Conservation Commission
39.80288, -103.06139, 4540.7ft, 165°
12/22/2019 03:19:29 PM



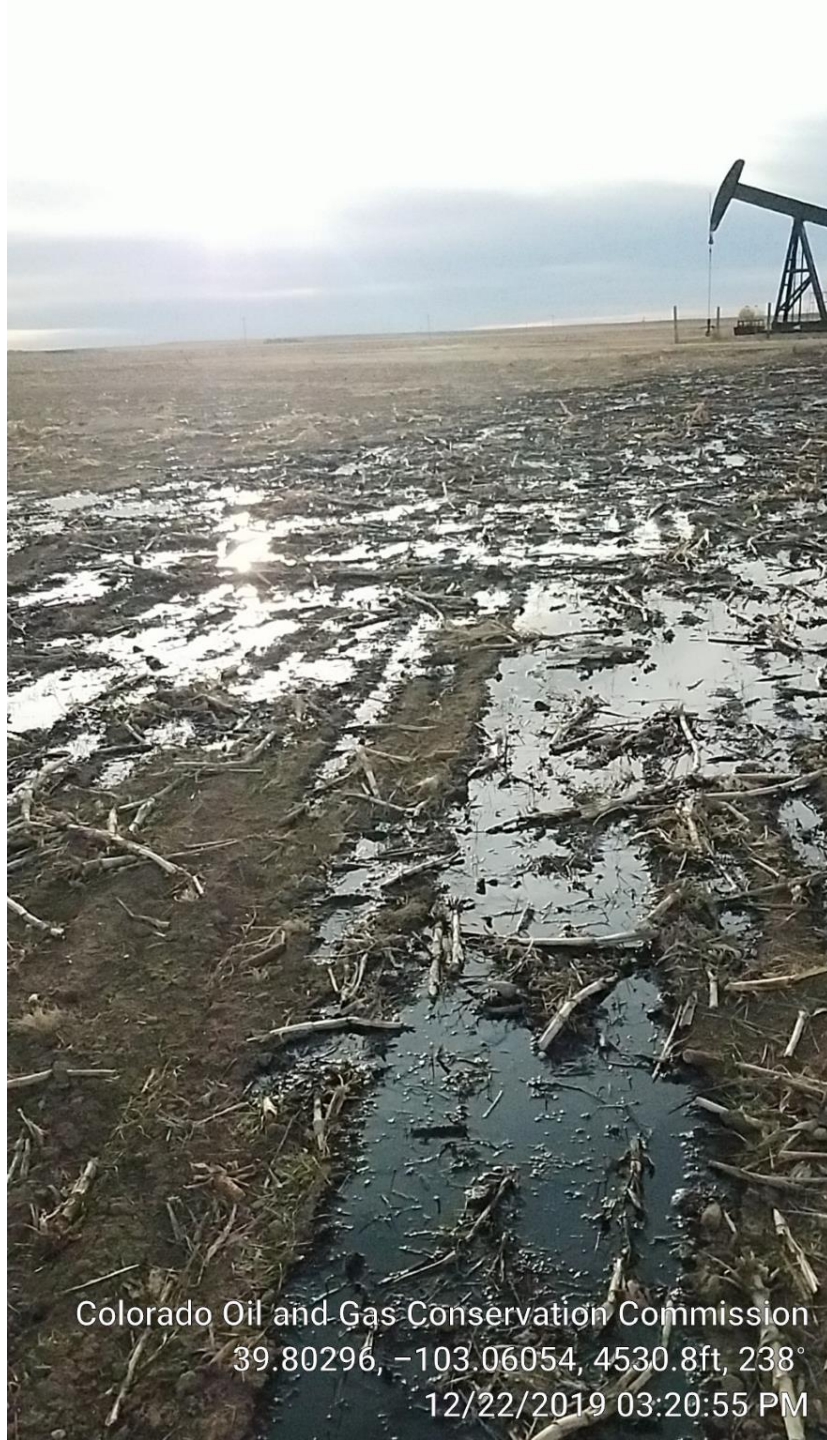
Colorado Oil and Gas Conservation Commission

39.80295, -103.06132, 4534.1ft, 97°

12/22/2019 03:19:39 PM



Colorado Oil and Gas Conservation Commission
39.80304, -103.06054, 4534.1ft, 237°
12/22/2019 03:20:43 PM



Colorado Oil and Gas Conservation Commission

39.80296, -103.06054, 4530.8ft, 238°

12/22/2019 03:20:55 PM



Colorado Oil and Gas Conservation Commission
39.80292, -103.06051, 4537.4ft, 241°
12/22/2019 03:21:03 PM