

**OPERATOR** DWAB INC  
**WELL** STEINLE 14-32

**SEC** 14 **TWP** 7 N. **RNG** 91 W.  
85593 KOPPAT **CO.** COLORADO

**analex**  
A GEOSCIENCE EXTENSION OF XCO

**DST REPORT:** DST# 1 Formation LEWIS SHALE Interval 4079' To 4129'

Reason for Test SHOW # 1, COMPANY REQUEST

Type Test CONVENTIONAL

Testing Company HALLIBURTON

Tester DOC MC MILLAN

Water Cushion ---

IF 45 Minutes OPEN TOOL, SMALL BLOW INCR TO BOTTOM BLOW, 1 to 8oz on PSI

ISI 60 Minutes CLOSE TOOL

FF 90 Minutes OPEN TOOL, 2oz to 13oz, decreasing to 9oz

FSI 180 Minutes CLOSE TOOL

BEST IMAGE  
AVAILABLE

**RECOVERY:** 120 ft GAS CUT MUD, 1220 ft GAS CUT WATER

**BOTTOM HOLE SAMPLER:** Pressure 340 Recovery 0.0014 cuft GAS, 2100 Gg WATER

**RESISTIVITY DATA:** Drill Pipe Recovery \_\_\_\_\_ @ \_\_\_\_\_ PPM CI  
Sampler 66.7" F @ 2.09 PPM CI  
Mud Pit \_\_\_\_\_ @ \_\_\_\_\_ PPM CI

**PRESSURES:**

Top Chart

IH 1979.6 FH 1979.6  
IF 56.2 to 243.5  
ISI 1733.8 to \_\_\_\_\_  
FF 284.7 to 599.3  
FSI 1733.8 to \_\_\_\_\_

Bottom Chart

IH 1998.1 FH 1998.1  
IF 100.3 to 300.7  
ISI 1778.9 to \_\_\_\_\_  
FF 300.7 to 781.6  
FSI 1778.9 to \_\_\_\_\_

Top Choke .25

Bottom Choke .25

Bottom Hole Temperature 120° F

Remarks SUCCESSFUL TEST

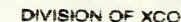
SHOW DEPTH CORRECTED BY PIPE STRAP TO 4104' - 4114'



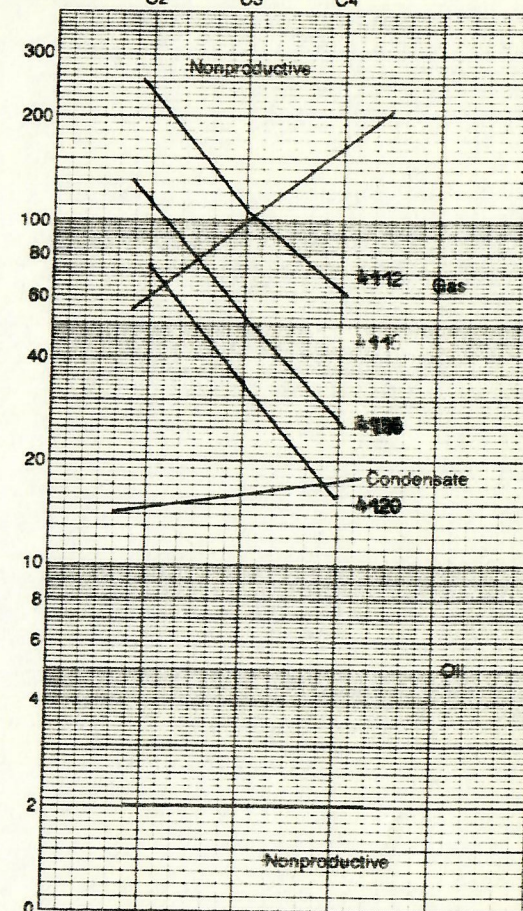
NOV 13 1985  
COLO. OIL & GAS CONS. COMM.

RECEIVED





RATIO PLOT:  $\frac{C_1}{C_2}$        $\frac{C_1}{C_3}$        $\frac{C_1}{C_4}$

[illegible]

**BEST IMAGE  
AVAILABLE**

Color wh, SLP Grain/Xtal Size fine Shape chrt-shang Sorting red Cmt & Mtx calc Acc \_\_\_\_\_

POROSITY: n p m f g x intgran \_\_\_\_\_ intxn \_\_\_\_\_ moldic \_\_\_\_\_ frac \_\_\_\_\_ vuggy \_\_\_\_\_ other \_\_\_\_\_

STAIN: Color NONE even spotted pinpoint bleeding % in total cuttings \_\_\_\_\_

FLUORESCENCE: Color NONE even spotted pinpoint % in total cuttings \_\_\_\_\_ % mnr/\_\_\_\_\_

CHLOROTHCNE CUT: Color yel Development fair resid. Residual: \_\_\_\_\_

CUT FLUORESCENCE: Color yel Development fair resid. Residual           

MUD PROPERTIES: Wt 8.9 FV 40 Fil 8.0 %Oil 0 Cl 900 ph 9.0 WOB 20 RPM 140 SPM 60 PP 1350

REMARKS: 1 TR OIL FILM ON POSSUM, TR WHITE PARIPIN IN MUD

RUN DST. PACKER SET AT 4079'

ODOR: n sl od

WETTABILITY TEST:                   +                   -

Bit Type \_\_\_\_\_ Hrs \_\_\_\_\_ Footage \_\_\_\_\_

Analex cannot and does not guarantee the accuracy or correctness of this data and interpretation. Analex shall not be held liable or responsible for any loss, cost, damage or expense incurred or sustained by customers resulting from the use of this information or interpretation thereof by any of its agents, servants or employees.

1350

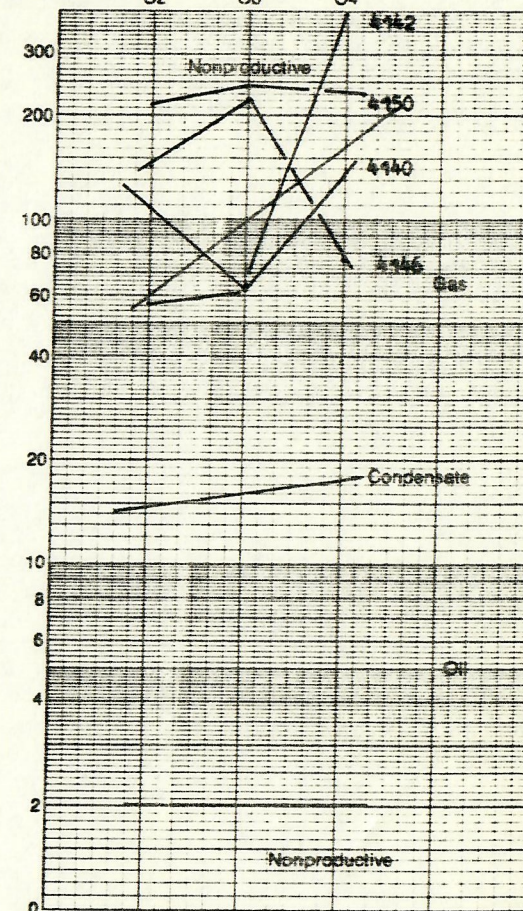
RECEIVED



SHOW REPORT# 2 Formation LEWIS SHALE  
Depth Interval from 4140' to 4150' with 1 liberated \_\_\_\_\_ produced gas  
Gross Ft 10 Net Ft \_\_\_\_\_

Time 2:00 pm  
Date 10/29/85

RATIO PLOT:  $\frac{C1}{C2}$        $\frac{C1}{C3}$        $\frac{C1}{C4}$

[illegible]

GAS RATIO EVALUATION: X oil X gas \_\_\_\_\_ cond. \_\_\_\_\_ titr \_\_\_\_\_ wet

LITHOLOGY TYPE: SS SH SLTST LS DOL Other \_\_\_\_\_  
%: ( 40 ) ( 60 ) ( ) ( ) ( ) ( )

Color wh. SLP Grain/Xtal Size very fine Shape sub-angular Sorting med Crnt & Mtx calc Acc

POROSITY: n p (m) f g x intgran \_\_\_\_\_ intdxn \_\_\_\_\_ moldic \_\_\_\_\_ frac \_\_\_\_\_ vuggy \_\_\_\_\_ other \_\_\_\_\_

STAIN: Color None even        spotted        pinpoint        bleeding        % in total cuttings       

FLUORESCENCE: Color YELLOW      even X spotted      pinpoint % in total cuttings 5 % mnr     

CHLOROTHENE CUT: Color YEL Development poor resid. Residual           

CUT FLUORESCENCE: Color YEL Development resid. Residual           

MUD PROPERTIES: Wt \_\_\_\_\_ FV \_\_\_\_\_ Fil \_\_\_\_\_ %Oil \_\_\_\_\_ Cl \_\_\_\_\_ ph \_\_\_\_\_

WOB \_\_\_\_\_ RPM \_\_\_\_\_ SPM \_\_\_\_\_ PP \_\_\_\_\_

ODOR: n sl ad

WETTABILITY TEST: + -

Blk Type \_\_\_\_\_ Hrs \_\_\_\_\_ Footage \_\_\_\_\_

Annex cannot and does not guarantee the accuracy or correctness of this data and interpretation. Annex shall not be held liable or responsible for any loss, cost, damage or expense incurred or sustained by customer resulting from the use of this information or interpretation thereof by any of its agents, servants or employees.

NOV 13 1985  
OIL & GAS CONS. COM

RECEIVED