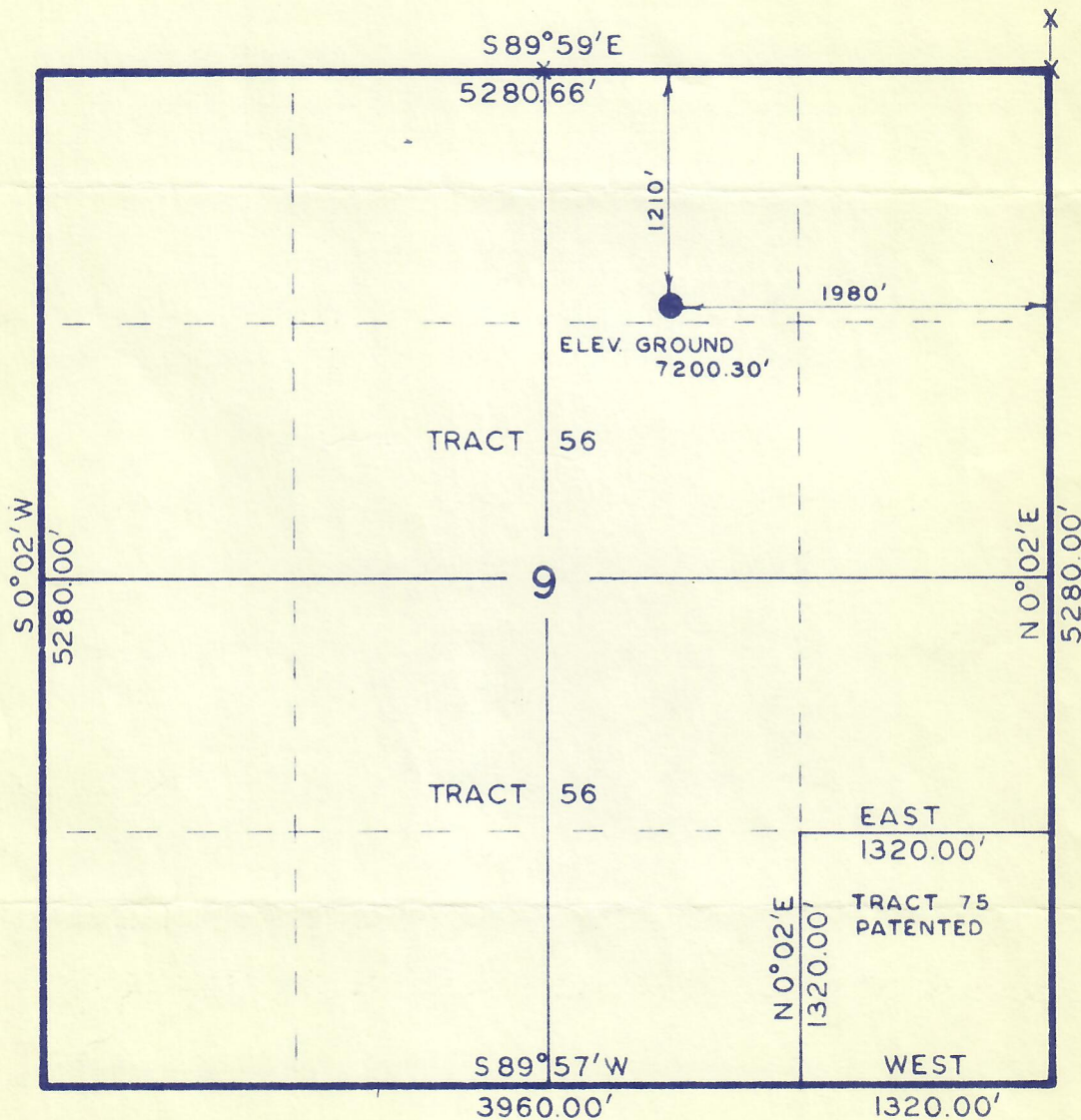




RECEIVED
JUL 7 - 1961
OIL & GAS
CONSERVATION COMMISSION

T 7N, R 86W, 6 TH P.M.

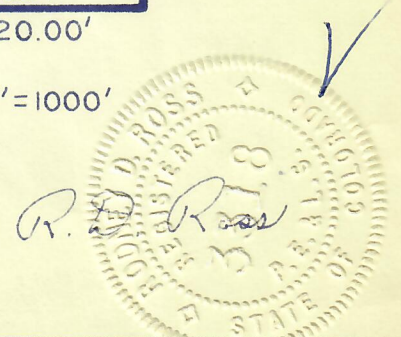


X = Corners Located (brass caps)

Scale: 1" = 1000'

Note: Elev. based on vert. angle elev.
shown on NE cor. sec. 9, T7N, R86W
Pilot Knob Quadrangle.

By: ROSS CONSTRUCTION CO.
Vernal, Utah



PARTY
Gene Stewart
Bill Lewis
WEATHER Cloudy-Warm

SURVEY
ALAMO CORP
WELL LOC. SIMOS STATE LOCATED AS SHOWN
IN NW 1/4, NE 1/4, SEC. 9, T7N, R86W, 6TH P.M.
ROUTT COUNTY, COLORADO.

DATE 7/1/61
REFERENCES
GLO Township plat
Approved 3/16/1922
FILE ALAMO