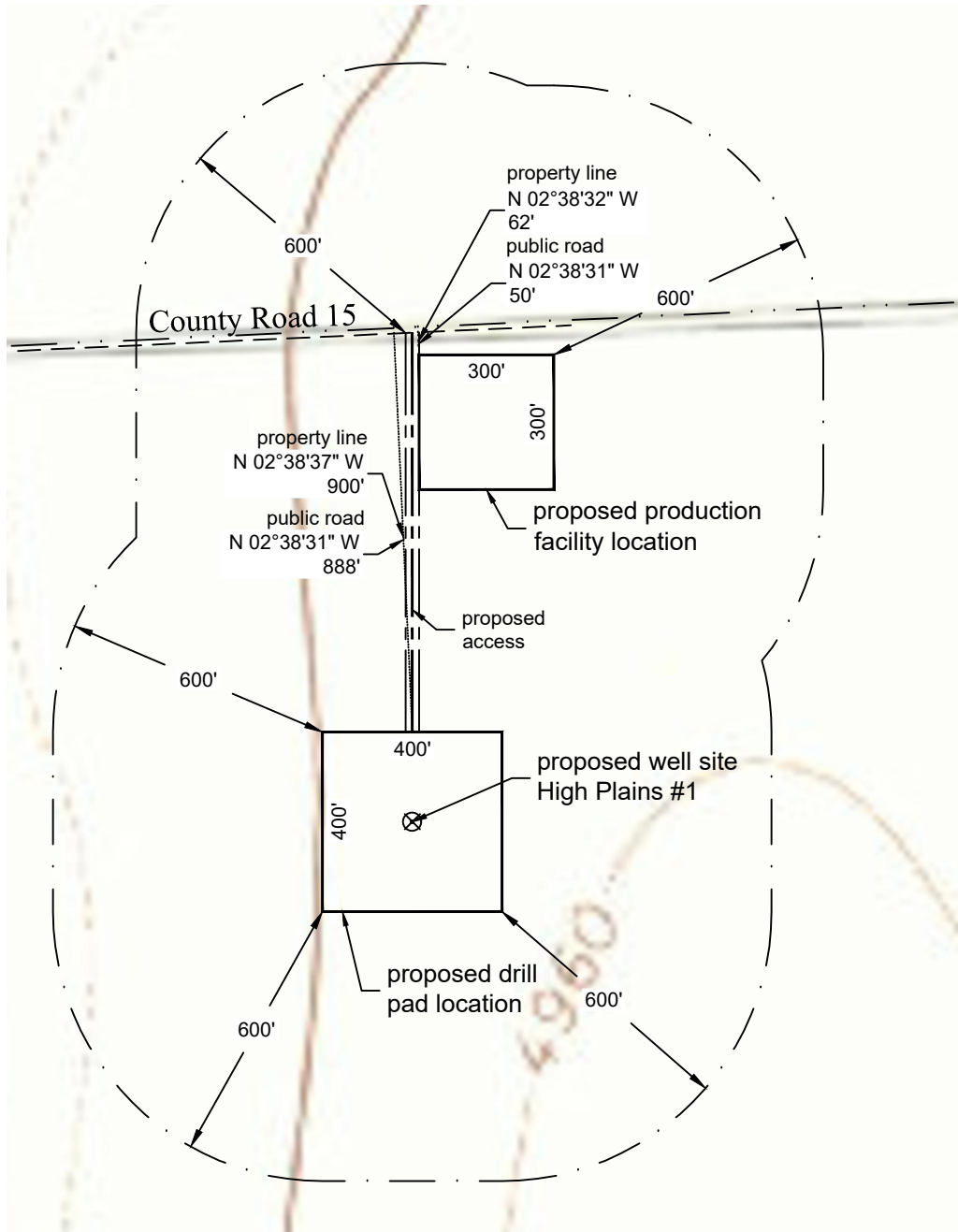


# Location Drawing



## Distance to nearest from Well:

Building:	3907'
Building Unit:	3907'
High Occupancy Building Unit:	5280'
Designated Outside Activity Area:	5280'
Public Road:	1088'
Aboveground Utility:	3986'
Railroad:	5280'
Property Line:	1100'
School Facility:	5280'
School Property Line:	5280'
Child Care Center:	5280'

## Distance to nearest from Production Facility:

Building:	3511'
Building Unit:	3511'
High Occupancy Building Unit:	5280'
Designated Outside Activity Area:	5280'
Public Road:	109'
Aboveground Utility:	3636'
Railroad:	5280'
Property Line:	121'
School Facility:	5280'
School Property Line:	5280'
Child Care Center:	5280'

P:\Project\2019\19024\dwg\19024\_imp.dwg November 27, 2019 - 1:05pm

Well Name:	<b>High Plains #1</b>	Field Date <b>4.29.2019</b>	Prepared for:	Project#: <b>19024.001</b>
		Party Chief <b>DCB</b>	<b>St. Croix Operating, Inc.</b>	
Section 22-T3S-R53W-6th PM, NW-NE		Proj. Manager <b>MDG</b>		
Washington County, Colorado		Drawing Date <b>11.27.2019</b>		
			PLS Group 6843 North Franklin Avenue Loveland, Colorado 80538 970.669.2100 office - 970.669.3652 fax	