

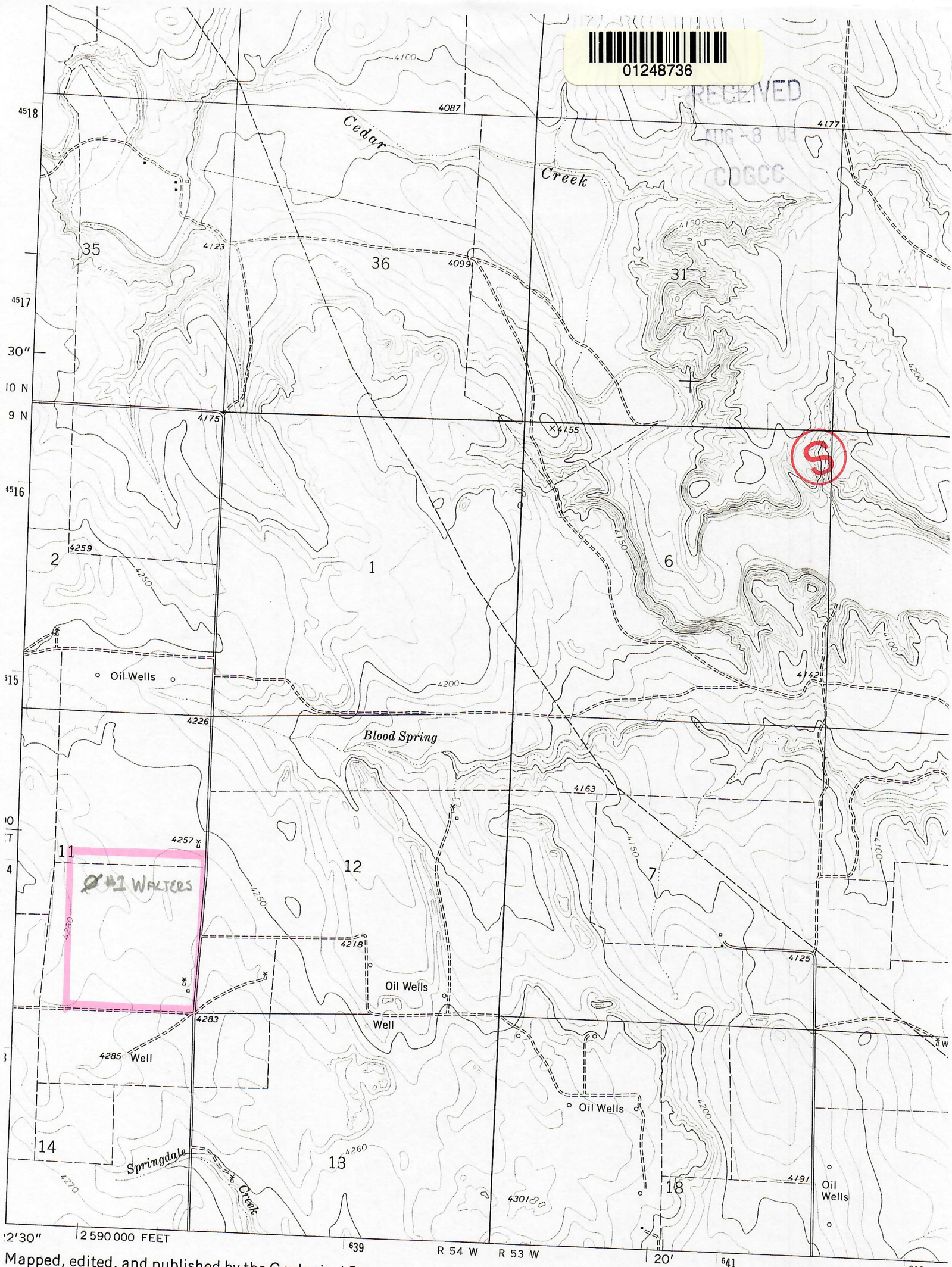


01248736

RECEIVED

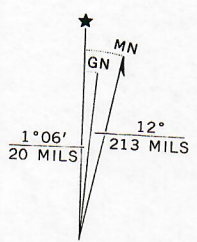
MTG-8 03

COGCC

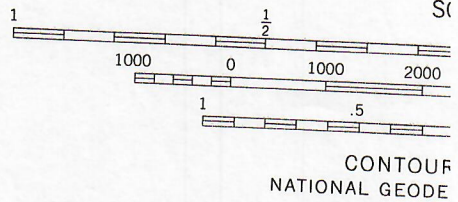


Mapped, edited, and published by the Geological Survey
Control by USGS and NOS/NOAA
Topography by photogrammetric methods from aerial photographs
taken 1973. Field checked 1974. Map edited 1978
Projection and 10,000-foot grid ticks: Colorado
coordinate system, north zone (Lambert conformal conic)
1000-meter Universal Transverse Mercator grid ticks,
zone 13, shown in blue. 1927 North American datum
Fine red dashed lines indicate selected fence lines

#1 WALTERS NW/SE 4
SEC 11 9N 54W 6TH PM



UTM GRID AND 1978 MAGNETIC NORTH
DECLINATION AT CENTER OF SHEET



CONTOUR
NATIONAL GEODE

THIS MAP COMPLIES WITH
FOR SALE BY U. S. GEOLOGICAL SURVEY, D
A FOLDER DESCRIBING TOPOGRAPHIC