

Conoco Phillips Company, Lone Tree 4-65 15-16 3BH
005-07261

Inspection #688306413

11/25/2019

Routine Inspection

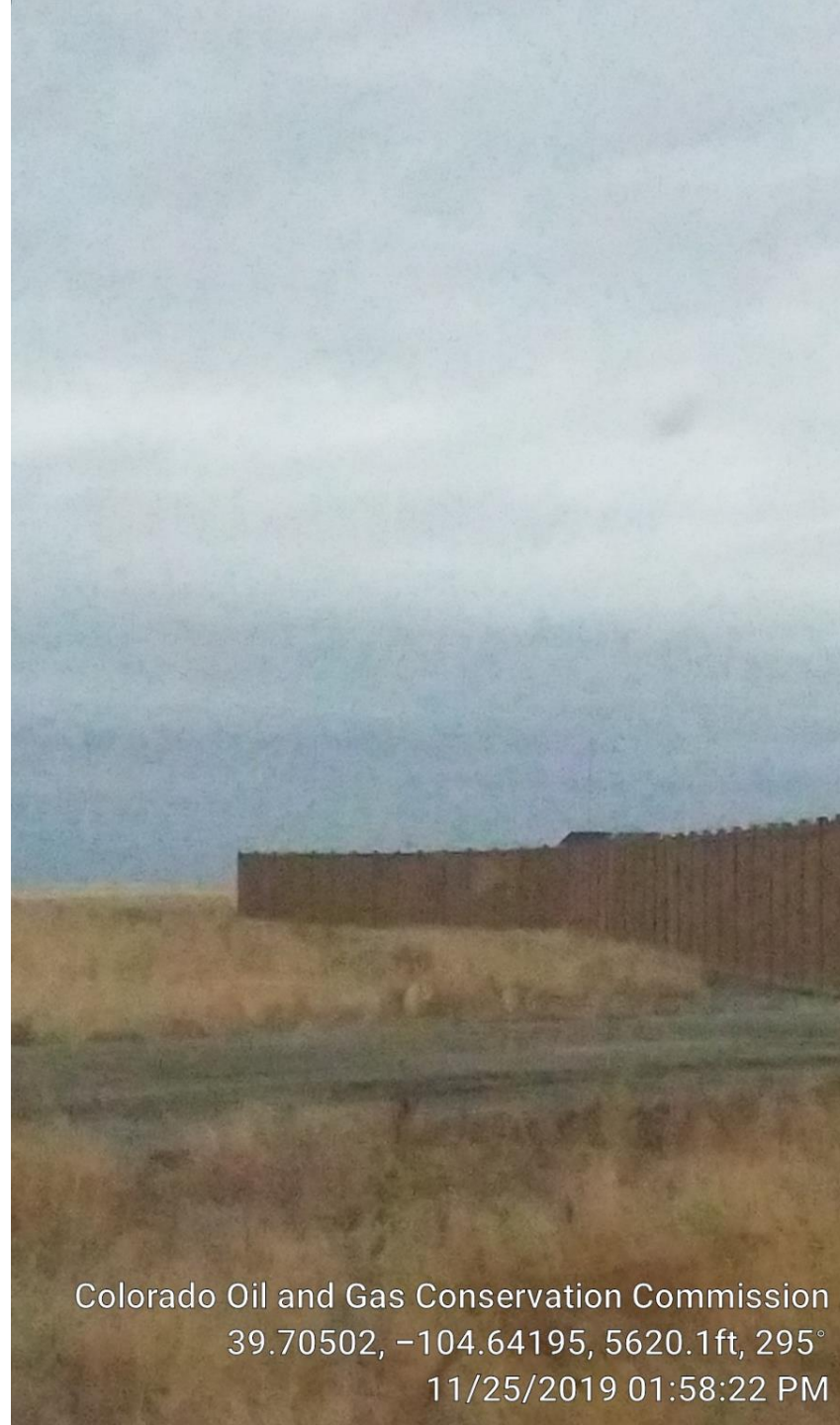


ConocoPhillips
LONETREE 4-65 15-16 3BH
SE/NE SEC. 15 TWP: 4S RNG: 65W
ARAPAHOE COUNTY, CO. ELEVATION 5693.3'
-ACCESS LOCATION FROM HAYESMOUNT ROAD
24 HR. CONOCO PHILLIPS CONTACT: 1-855-595-8258
LOCAL EMERGENCY SERVICES: 911 NO SMOKING

Colorado Oil and Gas Conservation Commission
39.70494, -104.6416, 5646.3ft, 186°
11/25/2019 01:57:58 PM



Colorado Oil and Gas Conservation Commission
39.70501, -104.64194, 5623.4ft, 247°
11/25/2019 01:58:15 PM



Colorado Oil and Gas Conservation Commission
39.70502, -104.64195, 5620.1ft, 295°
11/25/2019 01:58:22 PM



Colorado Oil and Gas Conservation Commission

39.70598, -104.64302, 5600.4ft; 326°

11/25/2019 02:03:31 PM



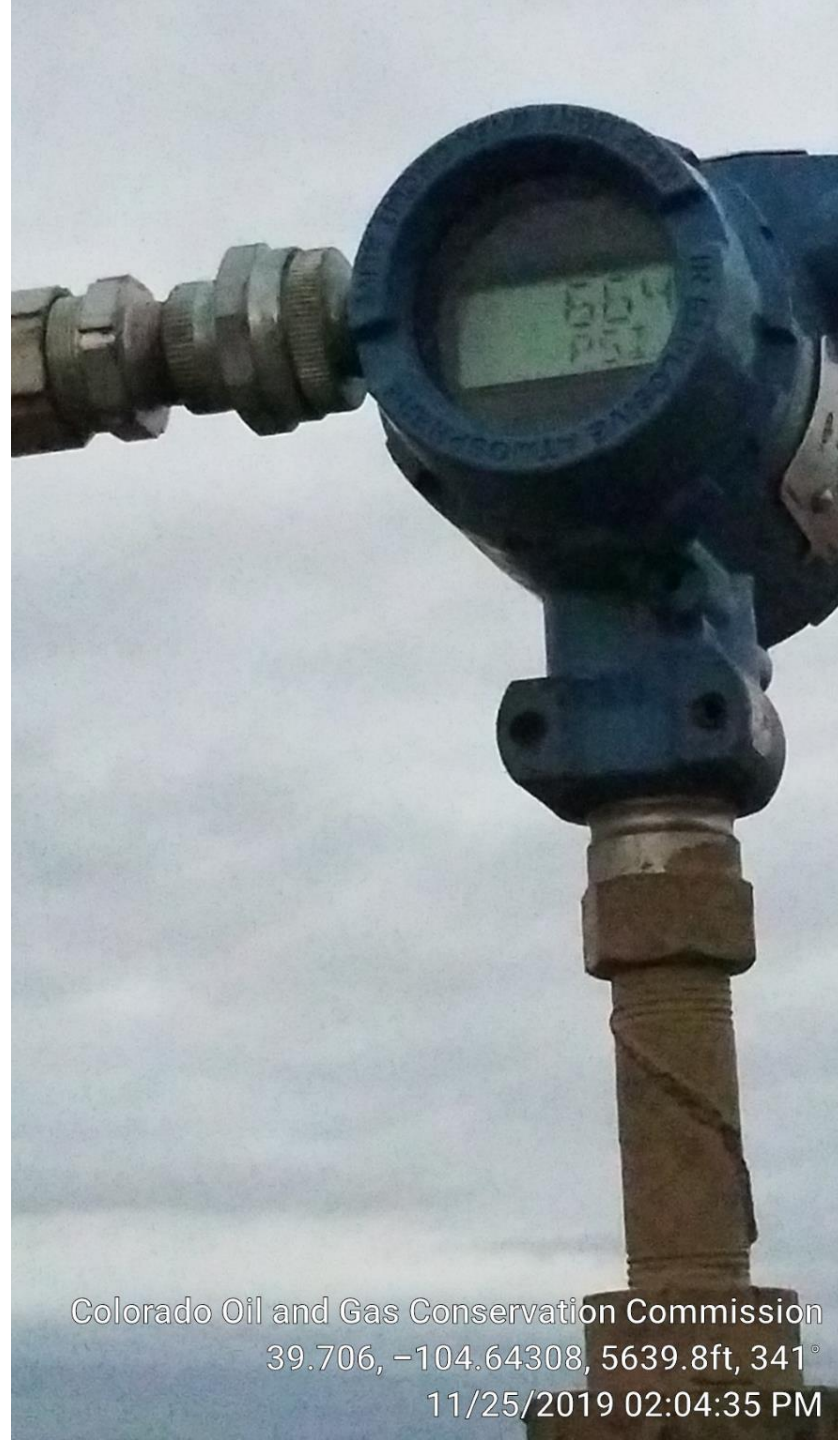
Colorado Oil and Gas Conservation Commission
39.70605, -104.64303, 5616.8ft, 235°
11/25/2019 02:03:40 PM



Colorado Oil and Gas Conservation Commission
39.70603, -104.64307, 5629.9ft, 52°
11/25/2019 02:03:51 PM



Colorado Oil and Gas Conservation Commission
39.70599, -104.64309, 5626.6ft, 264°
11/25/2019 02:04:06 PM



Colorado Oil and Gas Conservation Commission
39.706, -104.64308, 5639.8ft, 341°
11/25/2019 02:04:35 PM



Colorado Oil and Gas Conservation Commission
39.70602, -104.64308, 5633.2ft, 65°
11/25/2019 02:04:46 PM



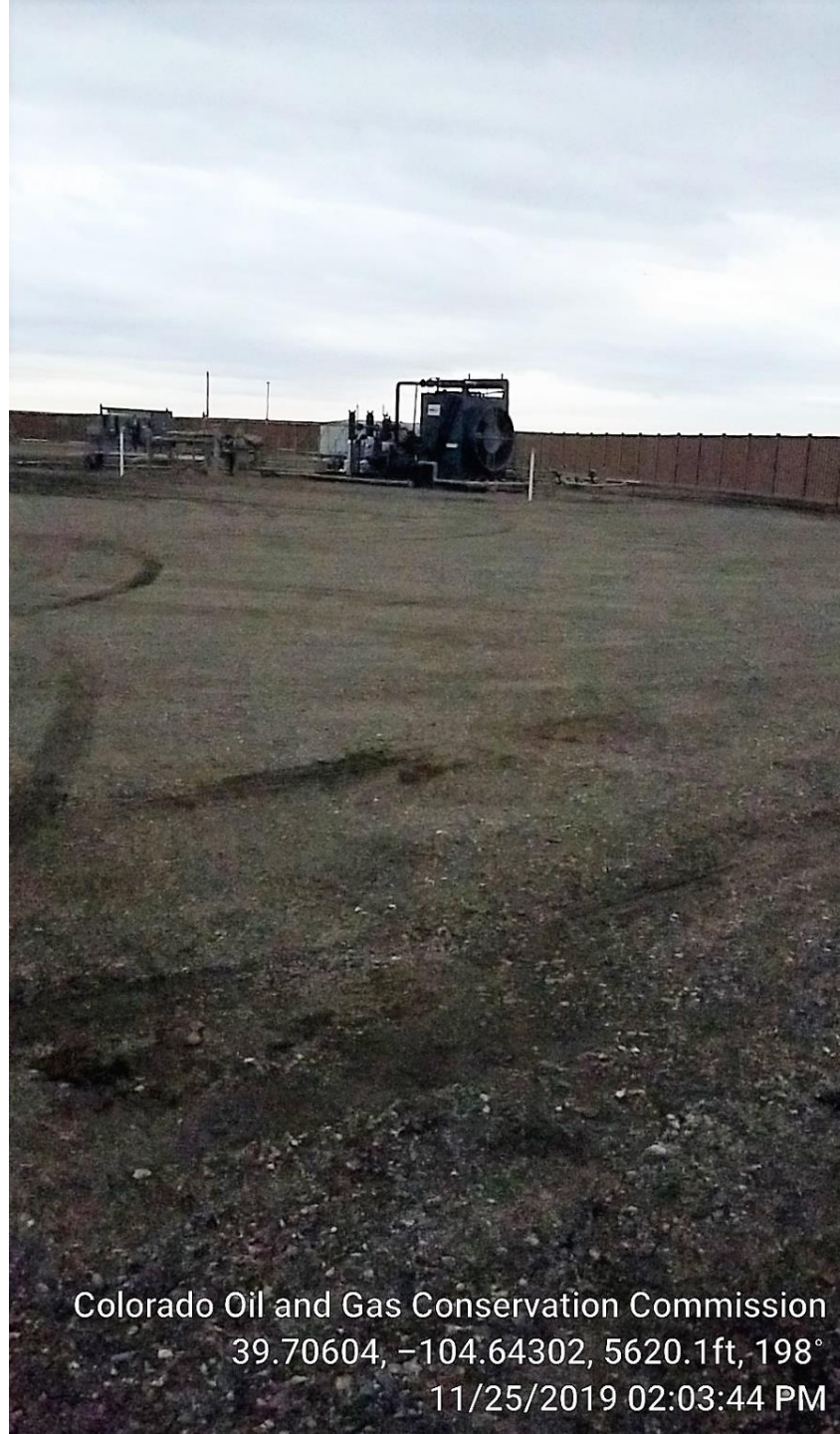
Colorado Oil and Gas Conservation Commission

39.70571, -104.6428, 5623.4ft, 112°

11/25/2019 02:07:21 PM



Colorado Oil and Gas Conservation Commission
39.706, -104.64301, 5607.0ft, 283°
11/25/2019 02:03:34 PM



Colorado Oil and Gas Conservation Commission
39.70604, -104.64302, 5620.1ft, 198°
11/25/2019 02:03:44 PM



Colorado Oil and Gas Conservation Commission

39.70571, -104.6428, 5623.4ft, 112°

11/25/2019 02:07:21 PM



Colorado Oil and Gas Conservation Commission

39.70598, -104.64306, 5633.2ft, 124°

11/25/2019 02:06:09 PM



Colorado Oil and Gas Conservation Commission
39.7057, -104.64211, 5623.4ft, 138°
11/25/2019 02:11:33 PM



Colorado Oil and Gas Conservation Commission

39.70555, -104.64198, 5636.5ft, 343°

11/25/2019 02:12:25 PM



Colorado Oil and Gas Conservation Commission
39.70612, -104.64223, 5633.2ft, 38°
11/25/2019 02:08:36 PM



Colorado Oil and Gas Conservation Commission
39.7061, -104.64216, 5633.2ft, 119°
11/25/2019 02:08:49 PM



Colorado Oil and Gas Conservation Commission
39.70555, -104.64197, 5636.5ft, 350°
11/25/2019 02:12:28 PM



Colorado Oil and Gas Conservation Commission
39.706, -104.64209, 5626.6ft, 165°
11/25/2019 02:09:20 PM



Colorado Oil and Gas Conservation Commission

39.70601, -104.64208, 5636.5ft, 196°

11/25/2019 02:09:02 PM



Colorado Oil and Gas Conservation Commission

39.70598, -104.64208, 5623.4ft, 101°

11/25/2019 02:09:24 PM



Colorado Oil and Gas Conservation Commission
39.70554, -104.64199, 5636.5ft, 41°
11/25/2019 02:12:22 PM