

# Inspection Photos

11/25/2019

Operator: WINSLOW RESOURCES INC - 97065

Location ID: 390108

Logan County, CO

Aaron Trujillo

NW Reclamation Specialist

COGCC

Inspection Photos  
Operator Name: WINSLOW RESOURCES INC - 97065  
Location ID: 390108



**Photo 1:** Photo taken from the south end of the location, facing north. Photo shows eastern end of pad with erosion concerns and un-reclaimed access road.

Inspection Photos  
Operator Name: WINSLOW RESOURCES INC - 97065  
Location ID: 390108

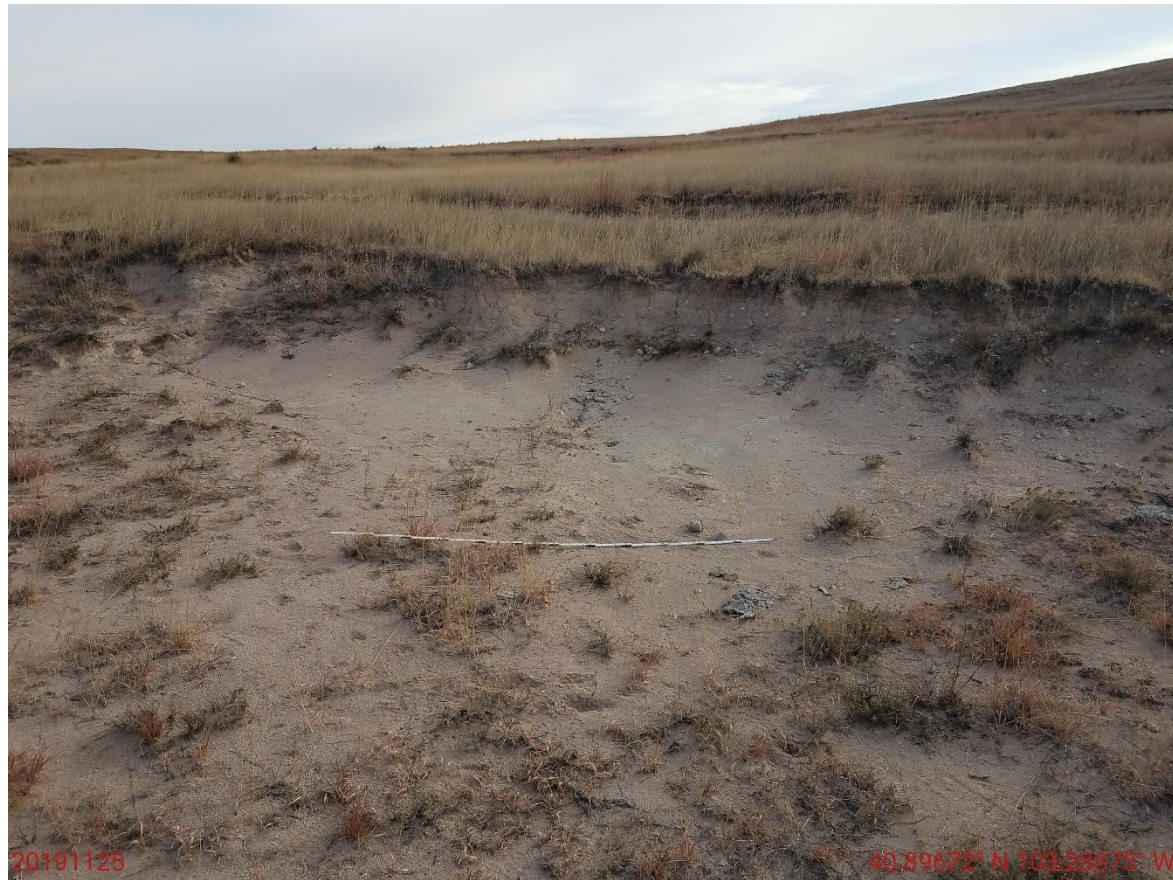


**Photo 2:** Photo taken from the south end of the pad, facing north. Photo shows erosion degradation on the east end of the pad remains.





Inspection Photos  
Operator Name: WINSLOW RESOURCES INC - 97065  
Location ID: 390108



**Photo 3:** See comments under photo 2. 6 foot measuring stick for reference.



Inspection Photos  
Operator Name: WINSLOW RESOURCES INC - 97065  
Location ID: 390108



**Photo 4:** Photo shows stormwater erosion on east end of pad.





Inspection Photos  
Operator Name: WINSLOW RESOURCES INC - 97065  
Location ID: 390108



**Photo 5:** Photo taken from the east of the location, facing east. Photo shows gully erosion due to stormwater runoff from the access road. 6 foot measuring stick for reference.



Inspection Photos  
Operator Name: WINSLOW RESOURCES INC - 97065  
Location ID: 390108



**Photo 6:** Photo taken from the east end of the location, facing southwest. Photo shows gully erosion. 6 foot measuring stick for reference.



## Inspection Photos

Operator Name: WINSLOW RESOURCES INC - 97065

Location ID: 390108



**Photo 7:** Photo taken from the access road northeast of the location, facing north. Photo shows access road has not been reclaimed, including but not limited to, recontouring/regrading to that of the adjacent lands. Stormwater has continued to degrade and channelize the access road.



**COLORADO**  
Oil & Gas Conservation  
Commission  
Department of Natural Resources



Inspection Photos  
Operator Name: WINSLOW RESOURCES INC - 97065  
Location ID: 390108



**Photo 8:** Continued from photo 7. 6 foot measuring stick for reference.





Inspection Photos  
Operator Name: WINSLOW RESOURCES INC - 97065  
Location ID: 390108



**Photo 9:** Photo taken from the access road, facing south towards the location. See comments under photo 7