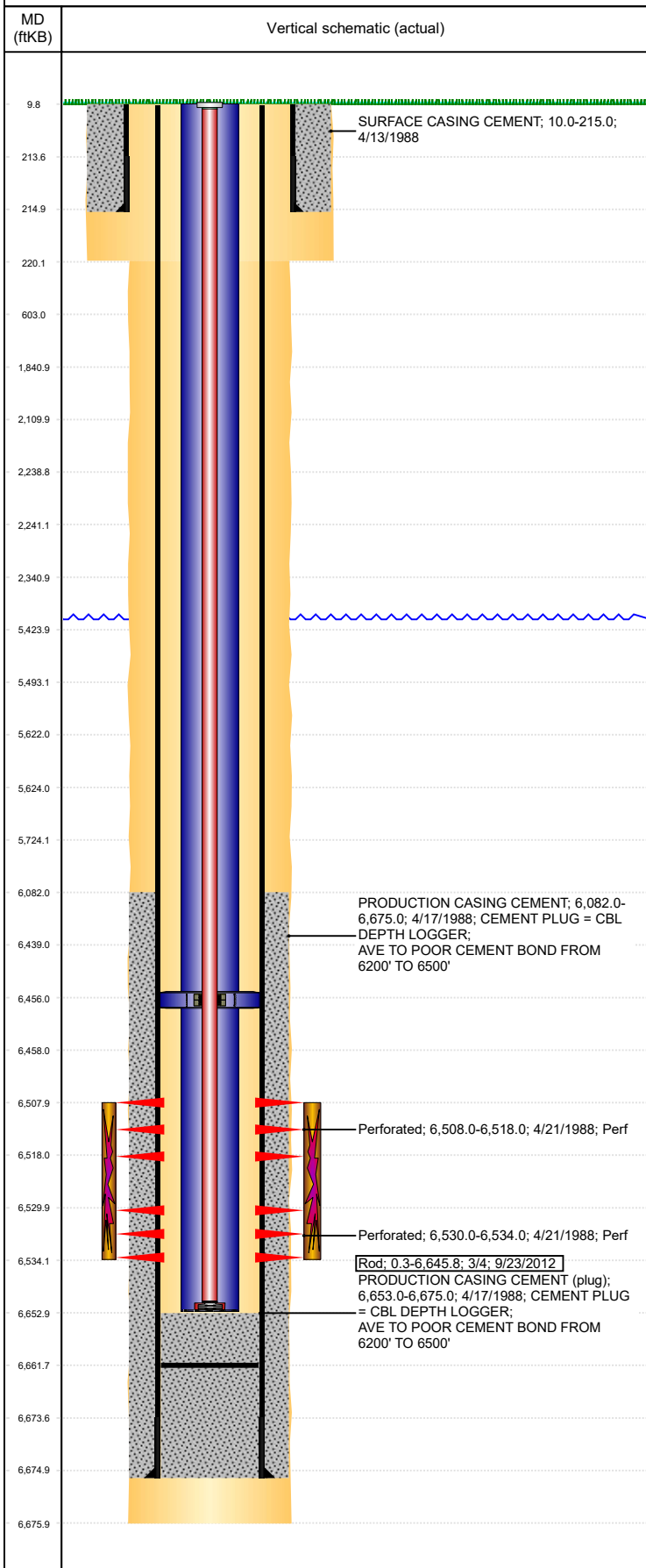


**Well Name: LILLI UNIT 06-07**

VERTICAL, ORIGINAL HOLE, 11/25/2019 10:44:05 AM



Well Header									
API 05-123-13893		Business Unit DJ BASIN		District 25		Well Config VERTICAL			
KB - GL / MSL (ft... 10.00		Spud Date 4/12/1988		P & A Date		Well Production Status SI			SoRT No
Comment WELL FILE MINIMAL; NO DRILLING REPORTS									
Surface Location (Congressional)									
Qtr 3 SE	Qtr 4 NW	Section 7	Twtnshp 8	Twtnsh... N	Range 58	Rng E/... W	Actual Latitude (°) 40.67829000	Actual Longitude (°) -103.90749000	
Wellbore Sections									
Section Des			Size (in)			Act Top, MD (ftKB)		Act Btm, MD (ftKB)	
SURFACE			12 1/4			10		220	
PRODUCTION			7 7/8			220		6,676	
Casing Strings									
Csg Des			Run Date		OD (in)	Wt/Len (lb/ft)	Grade	Top, MD (ftKB)	MD (ftKB)
Surface			4/13/1988		8 5/8	24.00	J-55	10.0	215.0
Production			4/17/1988		5 1/2	15.50	J-55	10.0	6,675.0
Cement									
Des					Start Date		Top (ftKB)		Btm (ftKB)
SURFACE CASING CEMENT					4/13/1988		10.0		215.0
PRODUCTION CASING CEMENT					4/17/1988		6,082.0		6,675.0
Zone Statuses									
Zone Name		Status Date	Status	Fluid Type	Job				Prod Method
D SAND		10/10/2012	PR	Water					Flowing
D SAND		6/13/2017	SI						
CODELL		5/24/1988	PR	Oil					
CODELL		10/10/2012	PR	Water					
NIOBRARA		5/24/1988	PR	Oil					
NIOBRARA		10/10/2012	PR	Water					Flowing
Perforation Data									
Linked Zone			Bnch/Stg	Entered Shot Total	Top (ftKB)		Btm (ftKB)		Date
D SAND, ORIGINAL HOLE				21	6,508.00		6,518.00		4/21/1988
D SAND, ORIGINAL HOLE				8	6,530.00		6,534.00		4/21/1988
Stimulation Intervals									
Zone				Start Date		Top (ftKB)		Btm (ftKB)	
D SAND, ORIGINAL HOLE				5/5/1988		6,508.0		6,534.0	
Other In Hole									
Run Date		Des				OD (in)	Top (ftKB)	Btm (ftKB)	
Logs									
Date		Type				Top, MD (ftKB)		Btm, MD (ftKB)	
4/17/1988		COMPENSATED DENSITY				5,644.0		6,656.0	
4/17/1988		INDUCTION				5,644.0		6,676.0	
4/17/1988		MICROLOG				5,644.0		6,646.0	
4/21/1988		CEMENT BOND				6,000.0		6,647.0	
5/3/1988		GAMMA RAY				6,400.0		6,630.0	
5/5/1988		GAMMA RAY				6,300.0		6,580.0	
Plug Back Total Depths									
Date		Type		Com				Depth (ftKB)	
1/12/2006		FILL						6,657.0	
9/21/2012		FILL		TBG TALLY MEASUREMENT.				6,661.8	