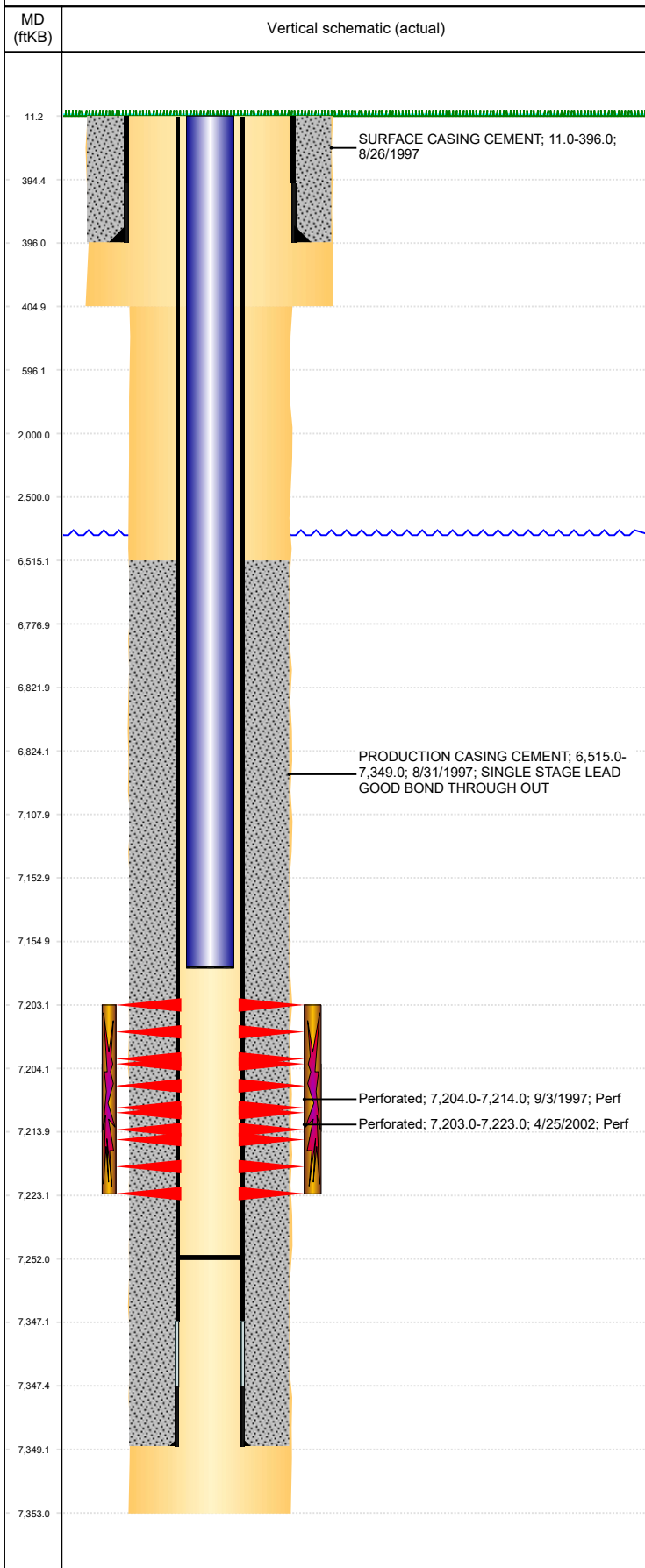


Well Name: BASS N14-09

VERTICAL, ORIGINAL HOLE, 11/25/2019 7:55:18 AM



Well Header									
API 05-123-19425		Business Unit DJ BASIN			District 15		Well Config VERTICAL		
KB - GL / MSL (ft... 11.00		Spud Date 8/26/1997		P & A Date		Well Production Status PR			SoRT No
Comment									
Surface Location (Congressional)									
Qtr 3	Qtr 4	Section	Twnshp	Twnsh...	Range	Rng E/...	Actual Latitude (°)		Actual Longitude (°)
NE	SE	14	5	N	67	W	40.39816289		-104.85263663
Wellbore Sections									
Section Des			Size (in)			Act Top, MD (ftKB)		Act Btm, MD (ftKB)	
SURFACE			12 1/4			11		405	
PRODUCTION			7 7/8			405		7,353	
Casing Strings									
Csg Des			Run Date		OD (in)	Wt/Len (lb/ft)	Grade	Top, MD (ftKB)	MD (ftKB)
Surface			8/26/1997		8 5/8	24.00		11.0	396.0
Production			8/31/1997		3 1/2	7.70	B-70	11.0	7,349.0
Cement									
Des					Start Date		Top (ftKB)		Btm (ftKB)
SURFACE CASING CEMENT					8/26/1997		11.0		396.0
PRODUCTION CASING CEMENT					8/31/1997		6,515.0		7,349.0
Zone Statuses									
Zone Name		Status Date		Status	Fluid Type		Job		Prod Method
CODELL		1/28/2010		PR	Water		HORIZONTAL WELL PREP, 7/2/2013 06:00		Flowing
CODELL		7/3/2013		SI					
Perforation Data									
Linked Zone			Bnch/Stg	Entered Shot Total		Top (ftKB)		Btm (ftKB)	Date
CODELL, ORIGINAL HOLE				80		7,203.00		7,223.00	4/25/2002
CODELL, ORIGINAL HOLE				40		7,204.00		7,214.00	9/3/1997
Stimulation Intervals									
Zone					Start Date		Top (ftKB)		Btm (ftKB)
CODELL, ORIGINAL HOLE					5/1/2002		7,203.0		7,223.0
CODELL, ORIGINAL HOLE					9/4/1997		7,204.0		7,214.0
Other In Hole									
Run Date			Des			OD (in)	Top (ftKB)	Btm (ftKB)	
Logs									
Date		Type					Top, MD (ftKB)		Btm, MD (ftKB)
8/30/1997		COMPENSATED DENSITY					4,600.0		7,335.0
8/30/1997		INDUCTION					396.0		7,353.0
9/3/1997		CEMENT BOND					6,300.0		7,265.0
6/6/2013		GYRO					11.0		7,160.0
Plug Back Total Depths									
Date		Type			Com				Depth (ftKB)
8/26/2002		FILL			CLEAN OUT TO LAND TUBING				7,276.0
7/31/2013		FILL			PUSH CBP T/7252' CHC				7,252.0