

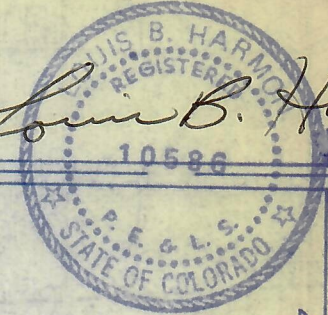
I hereby certify that the accompanying plat is an accurate representation of a correct survey showing the location of a proposed well. This location may be described as a point 2040 feet North of the South line and 600 feet West of the East line of Section 33, T7N, R58W of the 6th PM, Weld County, Colorado.

The surface elevation at this point is 4791 feet above sea level.



00198543

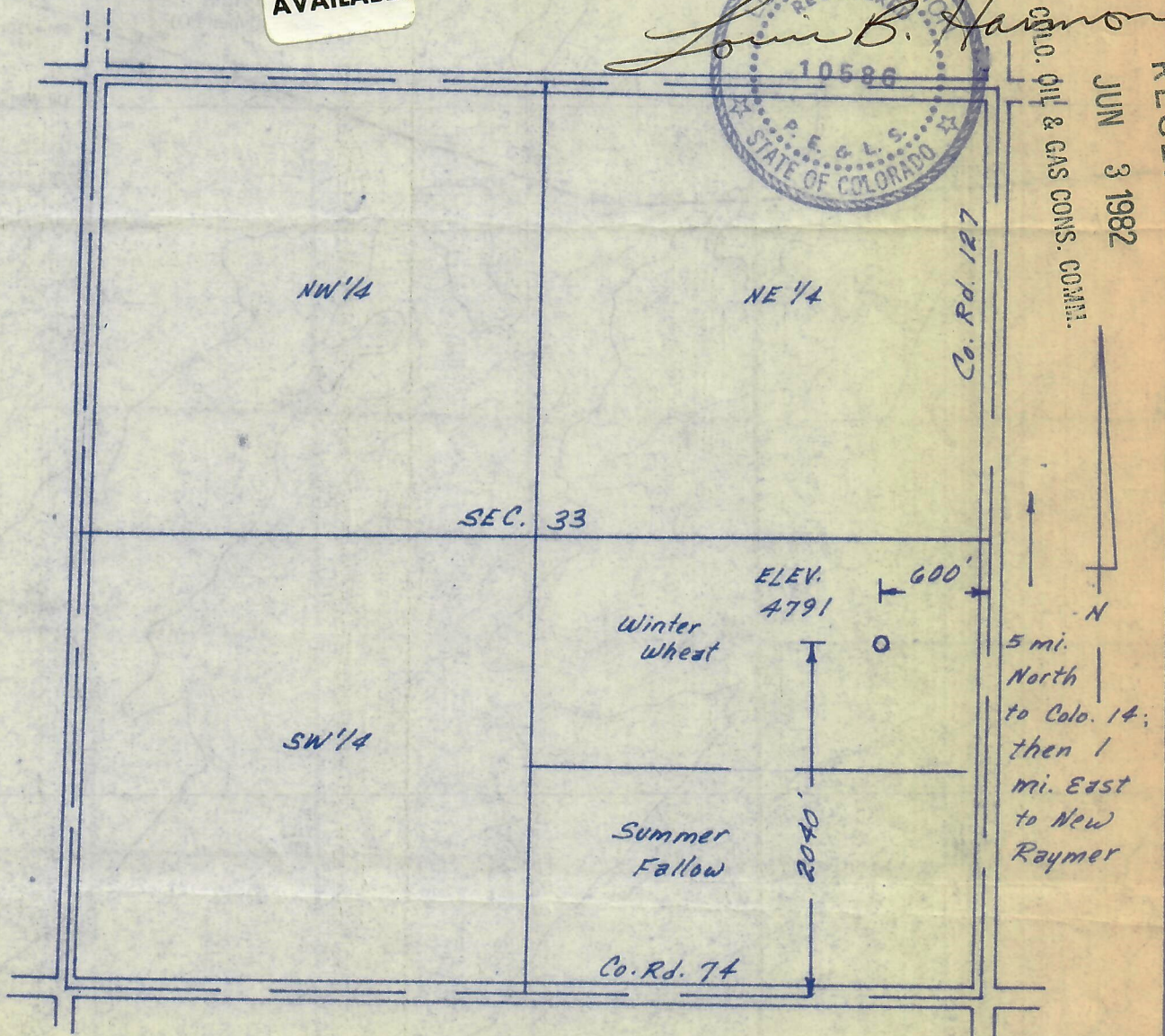
BEST COPY AVAILABLE



Louis B. Harmon
 C.O. Oil & Gas Cons. Comm.

JUN 3 1982

RECEIVED



O SURVEYED POINT

BEST COPY AVAILABLE

**HARMON
ENGINEERING
SERVICES**

Vertens #1
 NE1/4 SE1/4, Section 33 T7N R58W

Energy Minerals 30 May 1982
 Weld County, Colorado
 1015-11

8

