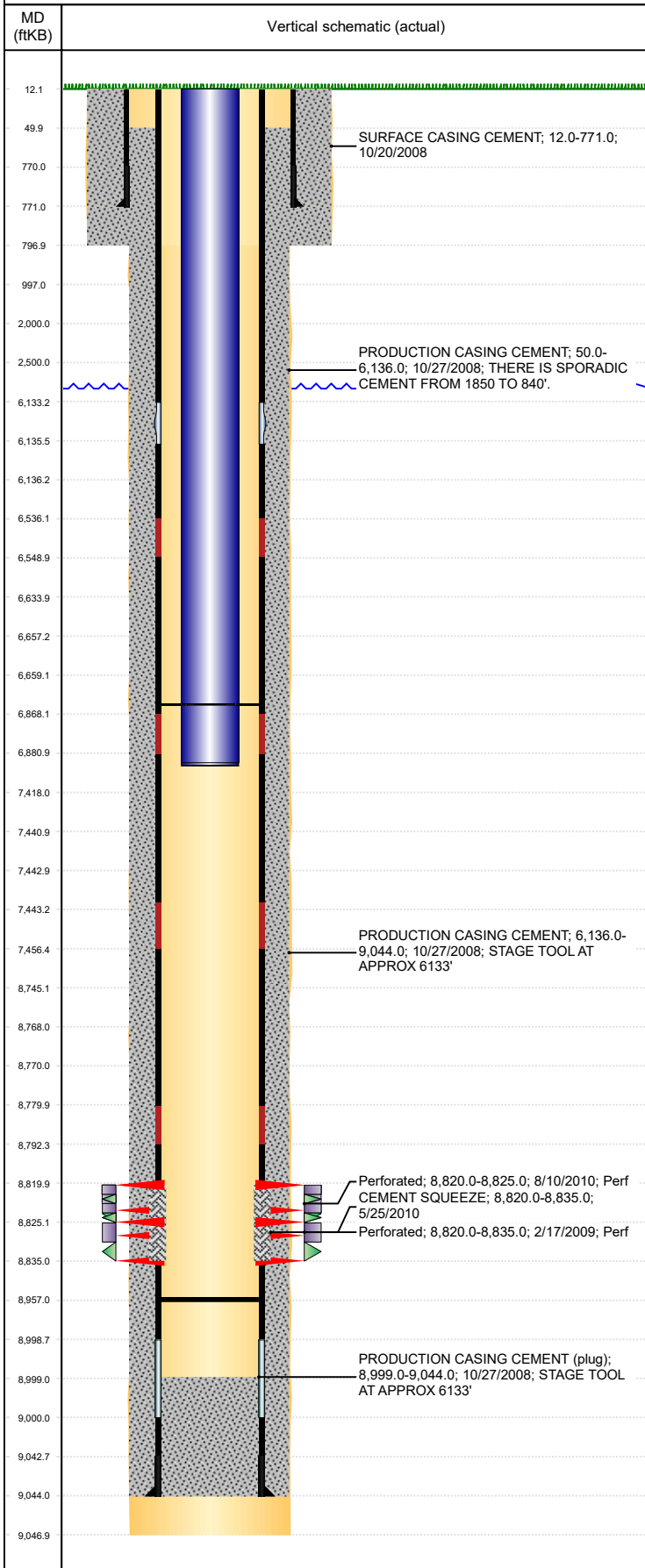


Well Name: DILLARD USX AB03-16

VERTICAL, ORIGINAL HOLE, 11/15/2019 8:51:00 AM



Well Header									
API 05-123-26968		Business Unit DJ BASIN			District 15		Well Config VERTICAL		
KB - GL / MSL (ft... 12.00		Spud Date 10/19/2008		P & A Date		Well Production Status PR			SoRT No
Comment THIS WELL IS A "TIGHT HOLE" - NO DATA SENT OFF LOCATION. DV TOOL @ 6133', DRILL OUT DV TOOL, C/O TO 8989'									
Surface Location (Congressional)									
Qtr 3 SE	Qtr 4 SE	Section 3	Twnshp 7	Twnsh... N	Range 64	Rng E/... W	Actual Latitude (°) 40.59669985	Actual Longitude (°) -104.52810484	
Wellbore Sections									
Section Des			Size (in)			Act Top, MD (ftKB)		Act Btm, MD (ftKB)	
SURFACE			12 1/4			12		797	
PRODUCTION			7 7/8			797		9,047	
Casing Strings									
Csg Des		Run Date		OD (in)	Wt/Len (lb/ft)	Grade	Top, MD (ftKB)	MD (ftKB)	
Surface		10/20/2008		8 5/8	24.00	J-55	12.0	771.0	
Production		10/27/2008		5 1/2	17.00	L-80	12.0	9,044.0	
Cement									
Des				Start Date		Top (ftKB)		Btm (ftKB)	
SURFACE CASING CEMENT				10/20/2008		12.0		771.0	
PRODUCTION CASING CEMENT				10/27/2008		50.0		6,136.0	
PRODUCTION CASING CEMENT				10/27/2008		6,136.0		9,044.0	
CEMENT SQUEEZE				5/25/2010		8,820.0		8,835.0	
Zone Statuses									
Zone Name		Status Date		Status	Fluid Type		Job		Prod Method
LYONS		2/23/2009		PR			DRILLING/COMPLETION - ORIGINAL, 2/24/2009...		
Perforation Data									
Linked Zone		Bnch/Stg	Entered Shot Total		Top (ftKB)		Btm (ftKB)		Date
LYONS, ORIGINAL HOLE			30		8,820.00		8,835.00		2/17/2009
LYONS, ORIGINAL HOLE			20		8,820.00		8,825.00		8/10/2010
Stimulation Intervals									
Zone			Start Date			Top (ftKB)		Btm (ftKB)	
LYONS, ORIGINAL HOLE			2/20/2009			8,820.0		8,835.0	
LYONS, ORIGINAL HOLE			5/24/2010			8,820.0		8,825.0	
LYONS, ORIGINAL HOLE			5/27/2010			8,820.0		8,825.0	
Other In Hole									
Run Date		Des				OD (in)	Top (ftKB)	Btm (ftKB)	
Logs									
Date		Type				Top, MD (ftKB)		Btm, MD (ftKB)	
10/26/2008		Caliper/Comp. Density/Neutron/GR/SP/ML				2,800.0		9,047.0	
10/26/2008		DIL/GR/SP/Caliper				771.0		9,047.0	
2/17/2009		CBL/CCL/GR				0.0		8,981.0	
1/24/2012		RESERVOIR MONITORING				7,880.0		8,968.0	
Plug Back Total Depths									
Date		Type		Com				Depth (ftKB)	
1/23/2012		FILL						8,990.0	
7/21/2014		FILL		SLICKLINE TAG				8,957.0	