



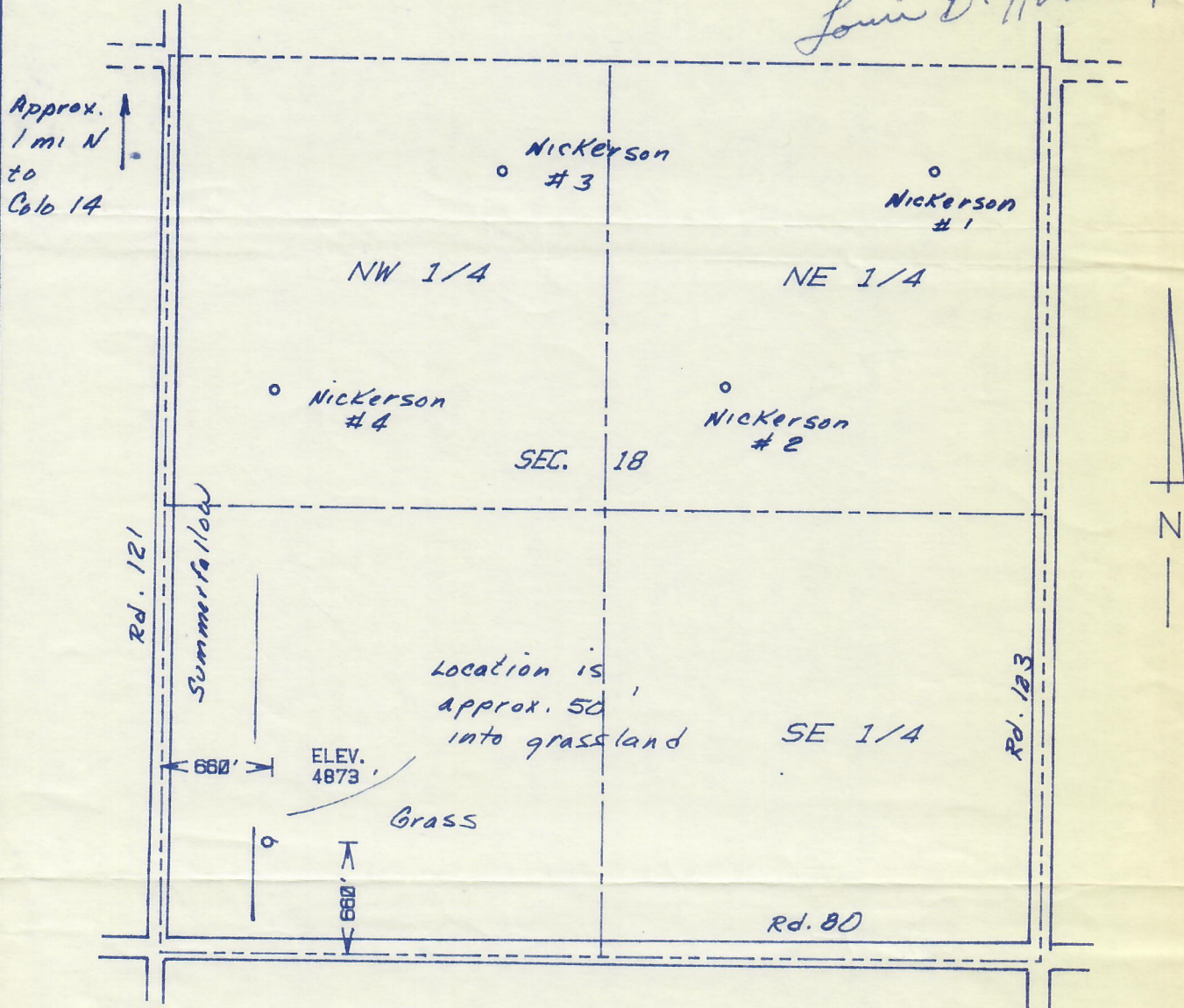
00225691

COLORADO OIL & GAS CONS. COMM.

JUN 24 1988

THE ACCOMPANYING PLAT IS AN ACCURATE REPRESENTATION SHOWING THE LOCATION OF A PROPOSED WELL. THIS LOCATION MAY BE DESCRIBED AS A POINT 660 FEET NORTH OF THE SOUTH LINE, AND 660 FEET EAST OF THE WEST LINE OF SECTION 18, TOWNSHIP 7 N RANGE 58 W OF THE 6th P.M., WELD COUNTY, COLORADO. THE SURFACE ELEVATION AT THIS POINT IS 4873 FEET m. s. l.

Louis B. Harmon



SCALE - 1"=1000'

○ SURVEYED POINT

SW 1/4 SEC. 18, T 7 N, R 58 W

HARMON
ENGINEERING
SERVICES

NICKERSON #5

ENERGY MINERALS CORP.

WELD CO., COLORADO

7 JUNE 1988