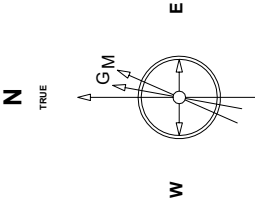


Great Western Operating Company, LLC

Created by	admin
Date plotted	4-Jun-2019
Plot reference is	B-Farm LD 18-034HN (AWB).
Ref wellpath is	B-Farm LD 18-034HN (AWP#1).
Coordinates are in	Feet reference E-11 - B-Farm LD 18-034HN.
True Vertical Depths are	reference Rig Datum.
Measured Depths are	reference Rig Datum.
Rig Datum:	Actual Datum #1
Rig Datum to Mean Sea Level:	5144.50 ft.
Plot North is aligned to	TRUE North.

Location	Colorado	Slot	E-11 - B-Farm LD 18-034HN
Field	Wattenburg	Well	B-Farm LD 18-034HN
Installation	B-Farm	Wellbore	B-Farm LD 18-034HN (AWB)



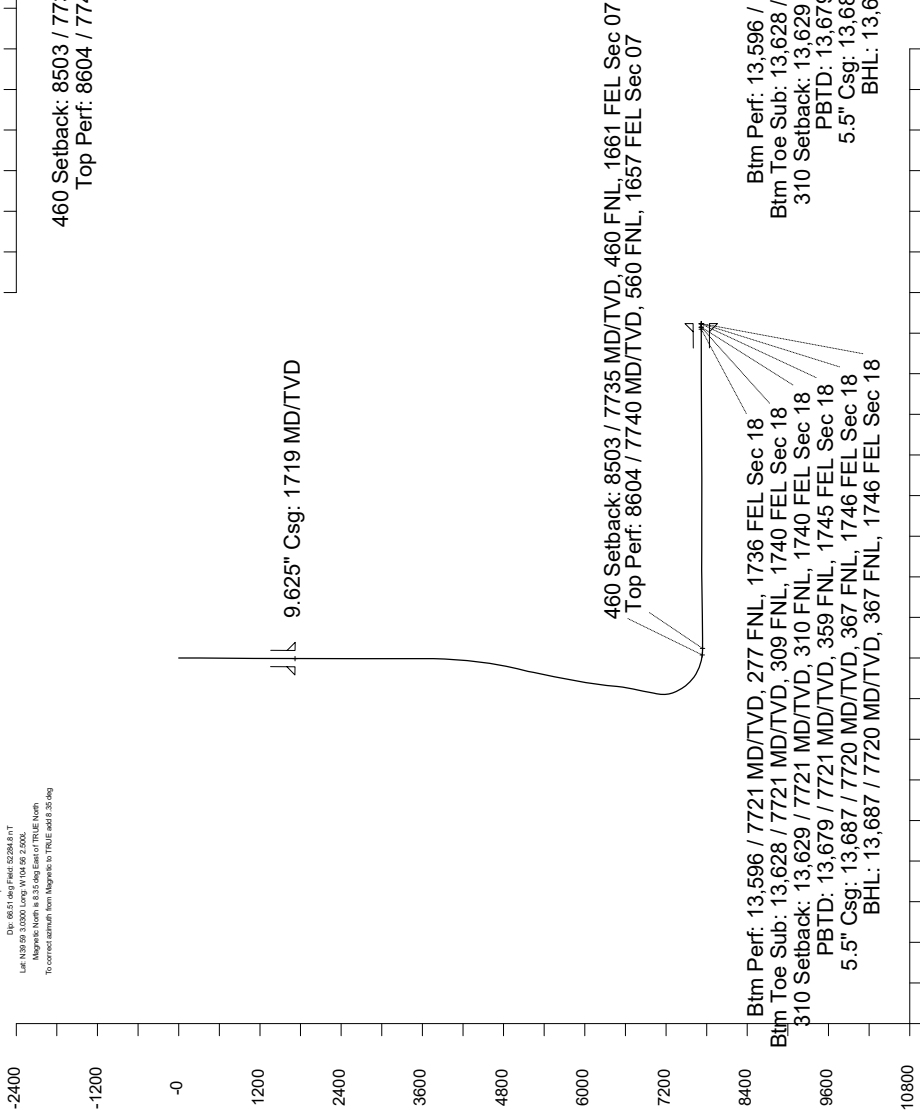
Scale 1 cm = 400 ft

East (Feet) ->

Scale 1 cm = 600 ft

-> True Vertical Depth (Feet)

Step-5-2016
Dip: 48.51 deg / Field: 02296.6 m/T
Lat: 43.02 09 33.000 Long: 104.09 25.000
To convert azimuth from Magnetic to TRUE add 35 deg



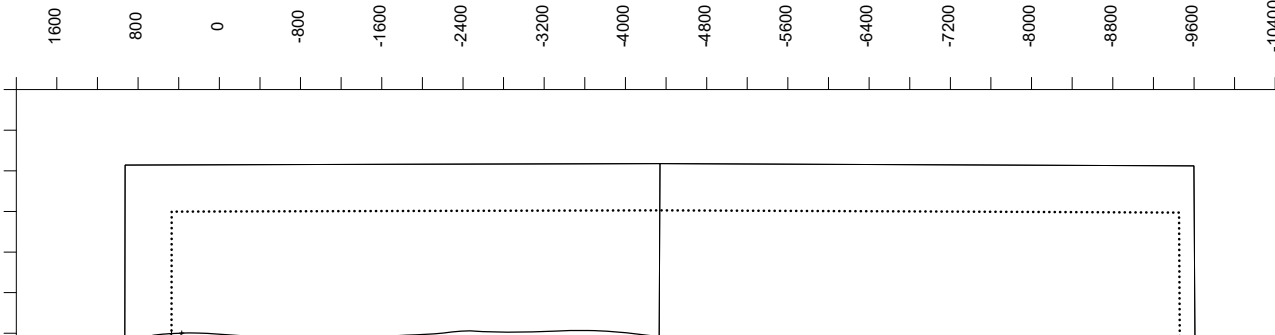
Scale 1 cm = 600 ft

Vertical Section (Feet) ->

Azimuth 162.04 with reference 0.00 N, 0.00 E from E-11 - B-Farm LD 18-034HN

<- North(Feet)

Scale 1 cm = 400 ft



Great Western Operating Co, LLC Directional Survey Report Wellpath: B-Farm LD 18-034HN MDs and TVDs are from Rig Floor 5144.5ft above Mean Sea Level

Wellbore Information

Date Created	Date Revised	API #	RKB above GL	Well Name
Nov-8-2018	Jun-4-2019	05-001-10095	20.00	B-Farm LD 18-034HN

Slot Coordinates

Latitude	Longitude
39.98379200	-104.93367100

Pad Information

Pad Name	Ground Elev.
B-Farm	5124.50

Field

Name
Wattenburg

Wellpath Report

MD[ft]	Inc[deg]	Azi[deg]	TVD[ft]	North[ft]	East[ft]	Dogleg [deg/100ft]	Vertical Section[ft]	Lat - NAD 83	Long - NAD 83
0.00	0.00	0.000	0.00	0.00	0.00		0.00	39.98379200	-104.93367100
20.00	0.00	231.980	20.00	0.00	0.00	==>	0.00	39.98379200	-104.93367100
214.00	0.66	231.980	214.00	-0.69	-0.88	0.34	0.38	39.98379011	-104.93367414
309.00	0.79	272.760	308.99	-0.99	-1.97	0.55	0.34	39.98378927	-104.93367801
404.00	0.97	272.940	403.98	-0.92	-3.42	0.19	-0.18	39.98378947	-104.93368321
500.00	1.10	274.080	499.96	-0.81	-5.15	0.14	-0.81	39.98378977	-104.93368939
595.00	0.97	304.400	594.95	-0.29	-6.73	0.58	-1.79	39.98379119	-104.93369500
690.00	1.01	288.320	689.93	0.42	-8.18	0.29	-2.93	39.98379316	-104.93370021
786.00	1.05	266.260	785.92	0.63	-9.87	0.41	-3.64	39.98379373	-104.93370621
881.00	0.92	268.980	880.90	0.56	-11.50	0.15	-4.08	39.98379354	-104.93371203
976.00	0.88	239.100	975.89	0.17	-12.89	0.49	-4.14	39.98379247	-104.93371698
1070.00	0.57	268.450	1069.89	-0.21	-13.97	0.50	-4.11	39.98379142	-104.93372086
1165.00	0.92	268.980	1164.88	-0.24	-15.21	0.37	-4.46	39.98379135	-104.93372527
1261.00	0.97	283.040	1260.86	-0.07	-16.77	0.25	-5.11	39.98379182	-104.93373084
1356.00	1.27	294.210	1355.85	0.55	-18.51	0.39	-6.23	39.98379350	-104.93373706
1451.00	1.05	287.090	1450.83	1.23	-20.31	0.28	-7.43	39.98379539	-104.93374346
1546.00	1.05	255.530	1545.81	1.27	-21.98	0.60	-7.99	39.98379549	-104.93374944
1640.00	0.66	274.610	1639.80	1.10	-23.35	0.51	-8.25	39.98379502	-104.93375434
1669.00	0.88	298.070	1668.80	1.22	-23.72	1.31	-8.47	39.98379534	-104.93375563
1719.00	0.51	296.680	1718.79	1.50	-24.25	0.74	-8.90	39.98379612	-104.93375755
1797.00	0.07	145.180	1796.79	1.62	-24.54	0.74	-9.10	39.98379644	-104.93375857
1886.00	0.06	166.670	1885.79	1.53	-24.50	0.03	-9.01	39.98379619	-104.93375842
1975.00	0.04	103.160	1974.79	1.47	-24.46	0.06	-8.94	39.98379605	-104.93375827
2065.00	0.03	304.500	2064.79	1.48	-24.45	0.08	-8.95	39.98379606	-104.93375823
2155.00	0.09	17.710	2154.79	1.56	-24.44	0.10	-9.02	39.98379629	-104.93375823
2244.00	0.04	314.300	2243.79	1.65	-24.44	0.09	-9.11	39.98379653	-104.93375823
2333.00	0.10	132.970	2332.79	1.62	-24.41	0.16	-9.07	39.98379644	-104.93375811
2422.00	0.11	358.090	2421.79	1.65	-24.36	0.22	-9.08	39.98379653	-104.93375791
2512.00	0.11	275.060	2511.79	1.74	-24.44	0.16	-9.20	39.98379679	-104.93375823
2601.00	0.04	238.080	2600.79	1.74	-24.56	0.09	-9.22	39.98379676	-104.93375863
2690.00	0.09	318.160	2689.79	1.77	-24.63	0.10	-9.28	39.98379686	-104.93375889
2780.00	0.07	196.250	2779.79	1.77	-24.69	0.16	-9.30	39.98379686	-104.93375911
2869.00	0.06	270.170	2868.79	1.72	-24.75	0.09	-9.27	39.98379672	-104.93375933
2958.00	0.14	296.920	2957.79	1.77	-24.90	0.10	-9.36	39.98379686	-104.93375984
3048.00	0.09	140.890	3047.79	1.76	-24.95	0.25	-9.37	39.98379684	-104.93376003
3137.00	0.13	158.860	3136.79	1.62	-24.87	0.06	-9.20	39.98379643	-104.93375975
3226.00	0.06	158.070	3225.79	1.48	-24.82	0.08	-9.06	39.98379606	-104.93375956
3316.00	0.13	176.070	3315.79	1.33	-24.79	0.08	-8.91	39.98379566	-104.93375947
3406.00	0.03	79.690	3405.79	1.23	-24.76	0.15	-8.81	39.98379539	-104.93375936
3495.00	0.10	270.530	3494.79	1.24	-24.82	0.15	-8.83	39.98379540	-104.93375956
3585.00	0.07	279.670	3584.79	1.25	-24.95	0.04	-8.88	39.98379543	-104.93376003
3674.00	0.07	83.350	3673.79	1.26	-24.95	0.16	-8.90	39.98379547	-104.93376003
3764.00	0.66	55.490	3763.79	1.56	-24.47	0.67	-9.03	39.98379630	-104.93375831
3853.00	3.54	39.580	3852.72	3.97	-22.29	3.27	-10.65	39.98380291	-104.93375055
3942.00	5.80	40.000	3941.42	9.54	-17.65	2.54	-14.51	39.98381818	-104.93373399
4032.00	8.30	43.870	4030.73	17.70	-10.22	2.83	-19.99	39.98384060	-104.93370749
4121.00	11.58	44.280	4118.38	28.73	0.47	3.69	-27.19	39.98387088	-104.93366934
4211.00	14.39	48.080	4206.08	42.68	15.10	3.26	-35.94	39.98390915	-104.93361712
4300.00	17.49	54.880	4291.65	57.76	34.27	4.06	-44.38	39.98395057	-104.93354870
4389.00	20.81	59.380	4375.72	73.52	58.82	4.08	-51.80	39.98399381	-104.93346108
4479.00	23.74	59.200	4458.99	90.94	88.15	3.26	-59.33	39.98404163	-104.93335643
4568.00	27.10	58.470	4539.37	110.72	120.83	3.79	-68.07	39.98409593	-104.93323983
4658.00	29.66	55.590	4618.55	134.03	156.68	3.22	-79.19	39.98415992	-104.93311189
4748.00	29.70	51.840	4696.75	160.39	192.59	2.06	-93.20	39.98423228	-104.93298375
4837.00	29.19	47.970	4774.26	188.55	226.05	2.21	-109.66	39.98430957	-104.93286435
4927.00	29.14	47.590	4852.85	218.02	258.53	0.21	-127.68	39.98439048	-104.93274844
5016.00	29.31	48.080	4930.52	247.19	290.73	0.33	-145.50	39.98447054	-104.93263350
5106.00	29.32	48.970	5008.99	276.37	323.75	0.48	-163.08	39.98455065	-104.93251569
5195.00	29.25	48.780	5086.62	305.00	356.54	0.13	-180.21	39.98462925	-104.93239866
5284.00	29.67	49.750	5164.11	333.56	389.71	0.71	-197.15	39.98470765	-104.93228030
5374.00	29.74	52.020	5242.29	361.69	424.31	1.25	-213.25	39.98478487	-104.93215683
5463.00	29.67	53.950	5319.59	388.24	459.52	1.08	-227.64	39.98485775	-104.93203118
5553.00	29.66	54.400	5397.80	414.31	495.63	0.25	-241.31	39.98492932	-104.93190230
5642.00	29.80	50.310	5475.09	441.26	530.56	2.28	-256.17	39.98500328	-104.93177766
5732.00	29.99	47.790	5553.12	470.65	564.43	1.41	-273.69	39.98508397	-104.93165678
5821.00	29.92	47.940	5630.23	500.47	597.39	0.12	-291.89	39.98516581	-104.93153918
5911.00	29.89	49.840	5708.25	529.97	631.19	1.05	-309.53	39.98524679	-104.93141855
6000.00	29.85	53.440	5785.43	557.47	665.93	2.01	-324.98	39.98532227	-104.93129457
6090.00	29.99	54.120	5863.44	583.99	702.15	0.41	-339.05	39.98539508	-104.93116532
6179.00	30.06	55.560	5940.49	609.63	738.56	0.81	-352.21	39.98546547	-104.93103540
6268.00	29.91	56.490	6017.58	634.49	775.44	0.55	-364.49	39.98553370	-104.93090377
6358.00	29.93	58.810	6095.59	658.51	813.36	1.29	-375.64	39.98559963	-104.93076846
6447.00	29.94	61.150	6172.72	680.72	851.81	1.31	-384.92	39.98566061	-104.93063125
6537.00	30.00	61.550	6250.68	702.28	891.26	0.23	-393.26	39.98571978	-104.93049045
6626.00	30.03	61.240	6327.75	723.59	930.35	0.18	-401.49	39.98577828	-104.93035096
6715.00	30.11	60.190	6404.77	745.41	969.24	0.60	-410.25	39.98583816	-104.93021217
6805.00	29.98	59.340	6482.68	768.09	1008.17	0.49	-419.83	39.98590044	-104.93007323
6894.00	30.01	56.850	6559.76	791.61	1045.93	1.40	-430.55	39.98596497	-104.92993847
6984.00	29.96	52.990	6637.72	817.44	1082.73	2.14	-443.78	39.98603590	-104.92980717
7073.00	29.94	51.010	6714.84	844.80	1117.74	1.11	-459.01	39.98611098	-104.92968223
7162.00	30.00	51.490	6791.94	872.62	1152.41	0.28	-474.79	39.98618736	-104.92955849
7251.00	29.95	52.030	6869.04	900.15	1187.33	0.31	-490.20	39.98626291	-104.92943385
7341.00	30.02	53.710	6946.99	927.29	1223.19	0.94	-504.97	39.98633743	-104.92930588
7430.00	30.06	53.770	7024.04	953.64	1259.12	0.06	-518.96	39.98640976	-104.92917767
7519.00	29.97	54.940	7101.10	979.59	1295.29	0.67	-532.49	39.98648097	-104.92904856
7608.00	27.62	76.980	7179.31	997.06	1333.70	12.15	-537.26	39.98652892	-104.92891149
7698.00	24.73	103.880	7260.36	997.24	1372.45	13.46	-525.49	39.98652942	-104.92877322
7787.00	27.96	125.220	7340.29	980.70	1407.66	11.18	-498.90	39.98648402	-104.92864758
7877.00	34.00	137.820	7417.49	949.83	1441.86	9.82	-458.99	39.98639925	-104.92852554
7966.00	39.21	143.650	7488.94	908.69	1475.27	7.03	-409.55	39.98628632	-104.92840630

MD[ft]	Inc[deg]	Azi[deg]	TVD[ft]	North[ft]	East[ft]	Dogleg [deg/100ft]	Vertical Section[ft]	Lat - NAD 83	Long - NAD 83
8055.00	47.07	148.940	7553.85	858.02	1508.82	9.72	-351.01	39.98614723	-104.92828659
8145.00	54.51	157.360	7610.76	795.83	1540.00	10.98	-282.23	39.98597650	-104.92817533
8234.00	62.05	165.040	7657.57	724.23	1564.16	11.20	-206.67	39.98577995	-104.92808914
8323.00	69.80	170.790	7693.88	644.85	1581.03	10.51	-125.96	39.98556204	-104.92802896
8412.00	77.31	175.400	7719.07	560.19	1591.21	9.79	-42.28	39.98532964	-104.92799263
8502.00	82.78	176.880	7734.62	471.78	1597.17	6.29	43.65	39.98508695	-104.92797140
8503.35	82.89	176.900	7734.79	470.45	1597.24	8.28	44.95	39.98508328	-104.92797114
8591.00	90.18	177.960	7740.08	383.10	1601.16	8.40	129.24	39.98484352	-104.92795718
8604.00	90.21	178.200	7740.04	370.11	1601.59	1.89	141.74	39.98480785	-104.92795563
8680.00	90.37	179.630	7739.66	294.13	1603.03	1.89	214.46	39.98459927	-104.92795052
8770.00	90.31	181.420	7739.12	204.14	1602.20	1.99	299.81	39.98435223	-104.92795349
8859.00	90.34	182.410	7738.62	115.19	1599.23	1.11	383.51	39.98410806	-104.92796412
8949.00	90.22	185.310	7738.18	25.40	1593.17	3.22	467.05	39.98386160	-104.92798576
9038.00	90.31	184.440	7737.77	-63.27	1585.61	0.98	549.08	39.98361817	-104.92801277
9127.00	91.02	183.690	7736.73	-152.04	1579.30	1.16	631.58	39.98337449	-104.92803530
9217.00	90.89	184.410	7735.23	-241.80	1572.94	0.81	715.01	39.98312809	-104.92805800
9306.00	91.02	184.440	7733.75	-330.53	1566.08	0.15	797.29	39.98288454	-104.92808252
9395.00	91.17	184.680	7732.05	-419.23	1559.00	0.32	879.49	39.98264104	-104.92810779
9485.00	91.02	184.430	7730.33	-508.93	1551.86	0.32	962.61	39.98239481	-104.92813331
9574.00	90.95	184.980	7728.80	-597.61	1544.56	0.62	1044.73	39.98215136	-104.92815937
9664.00	90.03	184.220	7728.03	-687.32	1537.34	1.33	1127.84	39.98190511	-104.92818515
9753.00	90.15	182.760	7727.89	-776.15	1531.92	1.65	1210.67	39.98166126	-104.92820450
9843.00	90.00	182.040	7727.77	-866.07	1528.16	0.82	1295.05	39.98141442	-104.92821797
9932.00	90.06	180.780	7727.73	-955.04	1525.97	1.42	1379.01	39.98117019	-104.92822580
10022.00	90.22	179.070	7727.51	-1045.04	1526.08	1.91	1464.66	39.98092314	-104.92822540
10111.00	90.00	178.090	7727.34	-1134.01	1528.29	1.13	1549.98	39.98067890	-104.92821755
10201.00	90.12	175.520	7727.24	-1223.86	1533.30	2.86	1637.00	39.98043225	-104.92819967
10290.00	90.09	173.660	7727.08	-1312.46	1541.70	2.09	1723.87	39.98018903	-104.92816975
10379.00	89.88	173.820	7727.10	-1400.93	1551.40	0.30	1811.02	39.97994617	-104.92813514
10477.00	89.85	175.550	7727.33	-1498.51	1560.48	1.77	1906.64	39.97967832	-104.92810277
10558.00	89.88	175.550	7727.52	-1579.26	1566.76	0.04	1985.40	39.97945664	-104.92808037
10648.00	89.97	176.780	7727.64	-1669.06	1572.78	1.37	2072.68	39.97921013	-104.92805891
10737.00	90.00	177.580	7727.66	-1757.95	1577.16	0.90	2158.59	39.97896612	-104.92804330
10827.00	89.75	177.620	7727.86	-1847.87	1580.93	0.28	2245.29	39.97871928	-104.92802988
10916.00	89.85	177.350	7728.17	-1936.78	1584.83	0.32	2331.07	39.97847520	-104.92801596
11005.00	90.12	176.790	7728.19	-2025.67	1589.38	0.70	2417.03	39.97823120	-104.92799975
11094.00	90.09	176.210	7728.03	-2114.50	1594.82	0.65	2503.21	39.97798735	-104.92798038
11184.00	90.03	173.810	7727.94	-2204.15	1602.64	2.67	2590.91	39.97774124	-104.92795247
11273.00	89.97	173.020	7727.94	-2292.57	1612.85	0.89	2678.16	39.97749854	-104.92791607
11362.00	90.28	175.940	7727.74	-2381.14	1621.41	3.30	2765.06	39.97725538	-104.92788555
11451.00	89.88	181.610	7727.62	-2470.09	1623.31	6.39	2850.26	39.97701123	-104.92787878
11541.00	90.09	183.800	7727.64	-2559.98	1619.07	2.44	2934.46	39.97676446	-104.92789396
11630.00	90.28	182.560	7727.35	-2648.84	1614.13	1.41	3017.47	39.97652053	-104.92791160
11719.00	89.91	180.280	7727.21	-2737.81	1611.92	2.60	3101.42	39.97627631	-104.92791949
11809.00	90.46	179.610	7726.92	-2827.81	1612.01	0.96	3187.06	39.97602925	-104.92791920
11898.00	90.25	180.450	7726.36	-2916.80	1611.96	0.97	3271.71	39.97578494	-104.92791939
11987.00	90.43	179.070	7725.84	-3005.80	1612.34	1.56	3356.49	39.97554064	-104.92791808
12077.00	90.55	179.060	7725.07	-3095.78	1613.80	0.13	3442.54	39.97529363	-104.92791286
12167.00	90.46	177.590	7724.27	-3185.74	1616.43	1.64	3528.92	39.97504669	-104.92790349
12256.00	90.31	177.550	7723.68	-3274.66	1620.21	0.17	3614.67	39.97480260	-104.92789005
12345.00	90.49	176.530	7723.05	-3363.54	1624.80	1.16	3700.64	39.97455862	-104.92787367
12434.00	90.28	179.820	7722.46	-3452.48	1627.64	3.70	3786.12	39.97431447	-104.92786358
12524.00	90.25	180.180	7722.04	-3542.47	1627.64	0.40	3871.73	39.97406741	-104.92786360
12613.00	90.22	180.480	7721.67	-3631.47	1627.13	0.34	3956.24	39.97382310	-104.92786545
12703.00	90.25	181.910	7721.31	-3721.45	1625.25	1.59	4041.25	39.97357611	-104.92787217
12792.00	90.03	183.380	7721.09	-3810.35	1621.14	1.67	4124.56	39.97333206	-104.92788684
12881.00	90.40	184.620	7720.75	-3899.13	1614.93	1.45	4207.10	39.97308835	-104.92790902
12971.00	89.97	186.230	7720.46	-3988.73	1606.42	1.85	4289.70	39.97284241	-104.92793939
13060.00	89.94	186.230	7720.53	-4077.20	1596.77	0.03	4370.89	39.97259954	-104.92797387
13149.00	89.85	186.520	7720.70	-4165.65	1586.88	0.34	4451.98	39.97235674	-104.92800915
13239.00	89.88	186.810	7720.91	-4255.04	1576.44	0.32	4533.80	39.97211135	-104.92804644
13328.00	89.97	187.220	7721.03	-4343.37	1565.57	0.47	4614.47	39.97186887	-104.92808524
13418.00	90.06	187.010	7721.00	-4432.68	1554.42	0.25	4695.99	39.97162372	-104.92812504
13507.00	90.12	186.480	7720.86	-4521.07	1543.97	0.60	4776.85	39.97138110	-104.92816235
13596.00	90.12	186.930	7720.68	-4609.46	1533.58	0.50	4857.73	39.97113846	-104.92819943
13597.00	90.12	186.930	7720.67	-4610.45	1533.46	0.50	4858.64	39.97113573	-104.92819986
13628.00	90.12	186.590	7720.61	-4641.23	1529.81	1.10	4886.80	39.97105123	-104.92821289
13628.27	90.12	186.590	7720.61	-4641.50	1529.78	1.11	4887.04	39.97105049	-104.92821300
13629.23	90.12	186.580	7720.61	-4642.46	1529.67	1.11	4887.92	39.97104787	-104.92821339
13663.00	90.12	186.200	7720.53	-4676.02	1525.91	1.11	4918.68	39.97095575	-104.92822680
13678.53	90.12	186.200	7720.50	-4691.45	1524.24	==>	4932.85	39.97091336	-104.92823279
13679.00	90.12	186.200	7720.50	-4691.92	1524.19	==>	4933.28	39.97091208	-104.92823297
13687.00	90.12	186.200	7720.48	-4699.88	1523.32	==>	4940.58	39.97089025	-104.92823606

Comments						
MD[ft]	TVD[ft]	North[ft]	East[ft]	Lat - NAD 83	Long - NAD 83	Comment
1719.00	1718.79	1.50	-24.25	39.98379612	-104.93375755	9.625" Csg: 1719 MD/TVD
8503.35	7734.79	470.45	1597.24	39.98508328	-104.92797114	460 Setback: 8503 / 7735 MD/TVD, 460 FNL, 1661 FEL Sec 07
8604.00	7740.04	370.11	1601.59	39.98480785	-104.92795563	Top Perf: 8604 / 7740 MD/TVD, 560 FNL, 1657 FEL Sec 07
13596.00	7720.68	-4609.46	1533.58	39.97113846	-104.92819943	Btm Perf: 13,596 / 7721 MD/TVD, 277 FNL, 1736 FEL Sec 18
13628.27	7720.61	-4641.50	1529.78	39.97105049	-104.92821300	Btm Toe Sub: 13,628 / 7721 MD/TVD, 309 FNL, 1740 FEL Sec 18
13629.23	7720.61	-4642.46	1529.67	39.97104787	-104.92821339	310 Setback: 13,629 / 7721 MD/TVD, 310 FNL, 1740 FEL Sec 18
13678.53	7720.50	-4691.45	1524.24	39.97091336	-104.92823279	PBTD: 13,679 / 7721 MD/TVD, 359 FNL, 1745 FEL Sec 18
13687.00	7720.48	-4699.88	1523.32	39.97089025	-104.92823606	5.5" Csg: 13,687 / 7720 MD/TVD, 367 FNL, 1746 FEL Sec 18
13687.00	7720.48	-4699.88	1523.32	39.97089025	-104.92823606	BHL: 13,687 / 7720 MD/TVD, 367 FNL, 1746 FEL Sec 18

Hole Sections								
Diameter [in]	Start MD[ft]	Start TVD[ft]	Start North[ft]	Start East[ft]	End MD[ft]	End TVD[ft]	End North[ft]	End East[ft]
13.500	0.00	0.00	0.00	0.00	1719.00	1718.79	1.50	-24.25
8.500	1719.00	1718.79	1.50	-24.25	13687.00	7720.48	-4699.88	1523.32

Casings								
Name	Top MD[ft]	Top TVD[ft]	Top North[ft]	Top East[ft]	Shoe MD[ft]	Shoe TVD[ft]	Shoe North[ft]	Shoe East[ft]
9 5/8in Casing	0.00	0.00	0.00	0.00	1719.00	1718.79	1.50	-24.25
5 1/2in Casing	0.00	0.00	0.00	0.00	13687.00	7720.48	-4699.88	1523.32

Survey Tool Program				
Reference	Survey Name	MD[ft]	TVD[ft]	Survey Tool
486145	As Drilled - 20181108	13687.00	7720.48	MWD

Coordinates are from Slot MD's and TVD's are from Rig Floor 5144.5ft above Mean Sea Level Vertical Section is from 0.00 0.00 on azimuth 162.040 degrees Bottom hole distance is 4940.58 Feet on azimuth 162.04 degrees from Wellhead Calculation method uses Minimum Curvature method Prepared by Great Western Operating Co. Date Printed:
