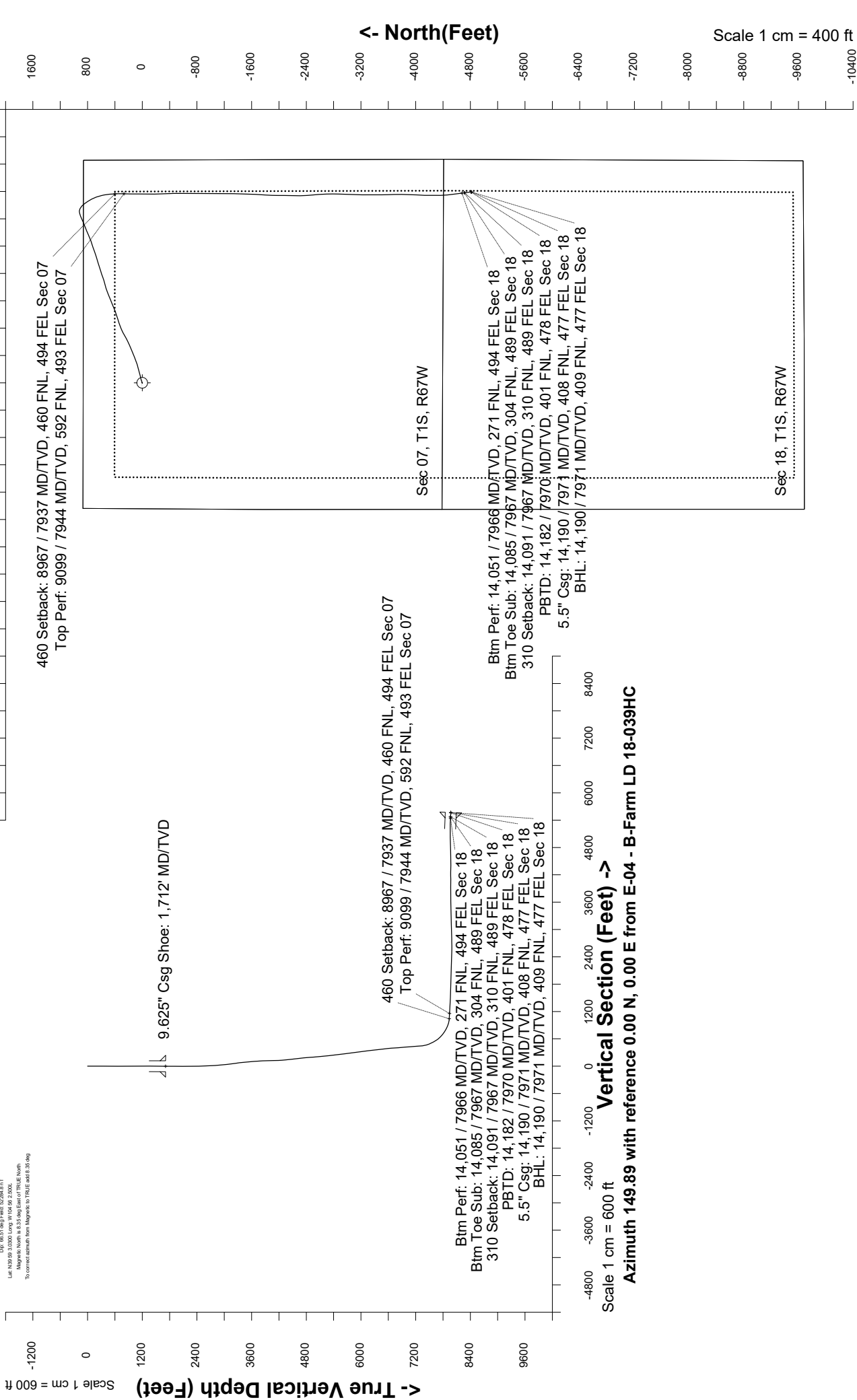
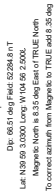
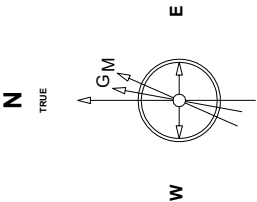


Great Western Operating Company, LLC

<p>Created by admin</p> <p>Date plotted 4-Jun-2019</p> <p>Plot reference is B-Farm LD 18-039HC (AWB).</p> <p>Rig wellpath is B-Farm LD 18-039HC (AWP#1).</p> <p>Coordinates are in Feet reference E-04 - B-Farm LD 18-039HC.</p> <p>True Vertical Depths are reference Rig Datum.</p> <p>Measured Depths are reference Rig Datum.</p> <p>Rig Datum: Actual Datum #1</p> <p>Rig Datum to Mean Sea Level: 5144.50 ft.</p> <p>Plot North is aligned to TRUE North.</p>



Great Western Operating Co, LLC Directional Survey Report Wellpath: B-Farm LD 18-039HC MDs and TVDs are from Rig Floor 5144.5ft above Mean Sea Level

Wellbore Information

Date Created	Date Revised	API #	RKB above GL	Well Name
Feb-22-2018	Jun-4-2019	05-001-10090	20.00	B-Farm LD 18-039HC

Slot Coordinates

Latitude	Longitude
39.98398100	-104.93367000

Pad Information

Pad Name	Ground Elev.
B-Farm	5124.50

Field

Name
Wattenburg

Wellpath Report

MD[ft]	Inc[deg]	Azi[deg]	TVD[ft]	North[ft]	East[ft]	Dogleg [deg/100ft]	Vertical Section[ft]	Lat - NAD 83	Long - NAD 83
0.00	0.00	0.000	0.00	0.00	0.00		0.00	39.98398100	-104.93367000
20.00	0.00	190.500	20.00	0.00	0.00	==>	0.00	39.98398100	-104.93367000
120.00	0.09	190.500	120.00	-0.08	-0.01	0.09	0.06	39.98398079	-104.93367005
216.00	0.31	191.900	216.00	-0.41	-0.08	0.23	0.31	39.98397989	-104.93367029
311.00	0.35	237.430	311.00	-0.81	-0.38	0.27	0.51	39.98397877	-104.93367135
405.00	0.40	245.080	405.00	-1.11	-0.92	0.08	0.50	39.98397796	-104.93367328
498.00	0.26	213.170	497.99	-1.42	-1.33	0.24	0.56	39.98397710	-104.93367474
594.00	0.35	331.300	593.99	-1.34	-1.59	0.55	0.37	39.98397731	-104.93367567
690.00	0.79	6.450	689.99	-0.43	-1.65	0.57	-0.46	39.98397982	-104.93367591
786.00	0.48	2.500	785.98	0.63	-1.56	0.33	-1.33	39.98398273	-104.93367558
881.00	0.09	152.790	880.98	0.96	-1.51	0.59	-1.59	39.98398364	-104.93367539
977.00	0.44	151.740	976.98	0.57	-1.30	0.36	-1.15	39.98398256	-104.93367465
1073.00	0.97	122.120	1072.97	-0.19	-0.44	0.65	-0.06	39.98398049	-104.93367157
1169.00	0.75	145.230	1168.96	-1.14	0.61	0.42	1.29	39.98397788	-104.93366784
1264.00	0.26	227.760	1263.96	-1.79	0.80	0.80	1.95	39.98397608	-104.93366714
1360.00	0.26	278.210	1359.96	-1.91	0.42	0.23	1.86	39.98397577	-104.93366848
1454.00	0.92	317.410	1453.95	-1.32	-0.30	0.78	0.99	39.98397737	-104.93367106
1549.00	1.05	0.390	1548.94	0.11	-0.81	0.77	-0.50	39.98398131	-104.93367288
1645.00	0.26	317.230	1644.93	1.15	-0.95	0.92	-1.47	39.98398416	-104.93367339
1662.00	0.26	271.620	1661.93	1.18	-1.01	1.19	-1.53	39.98398424	-104.93367362
1700.00	0.31	286.000	1699.93	1.21	-1.20	0.23	-1.65	39.98398432	-104.93367428
1712.00	0.25	280.950	1711.93	1.22	-1.26	0.53	-1.69	39.98398436	-104.93367448
1800.00	0.26	151.260	1799.93	1.09	-1.35	0.53	-1.62	39.98398398	-104.93367482
1900.00	0.20	67.600	1899.93	0.95	-1.08	0.31	-1.37	39.98398362	-104.93367385
2000.00	0.22	34.000	1999.93	1.18	-0.81	0.12	-1.43	39.98398424	-104.93367289
2100.00	0.14	32.780	2099.93	1.44	-0.64	0.08	-1.57	39.98398496	-104.93367227
2200.00	0.11	40.690	2199.93	1.62	-0.51	0.03	-1.65	39.98398544	-104.93367181
2300.00	0.77	90.640	2299.93	1.68	0.23	0.70	-1.34	39.98398562	-104.93366919
2400.00	3.36	74.980	2399.85	2.43	3.73	2.63	-0.24	39.98398768	-104.93365669
2435.00	3.53	77.860	2434.79	2.93	5.77	0.69	0.36	39.98398903	-104.93364940
2504.00	6.62	69.180	2503.51	4.79	11.57	4.60	1.66	39.98399414	-104.93362872
2593.00	9.17	67.490	2591.66	9.33	22.92	2.88	3.43	39.98400660	-104.93358822
2682.00	12.26	72.400	2679.10	14.90	38.48	3.62	6.41	39.98402190	-104.93353268
2772.00	14.44	77.720	2766.67	20.18	58.56	2.78	11.92	39.98403639	-104.93346104
2861.00	16.94	77.070	2852.35	25.44	82.04	2.82	19.14	39.98405083	-104.93337724
2951.00	20.52	76.470	2937.57	32.07	110.16	3.98	27.52	39.98406902	-104.93327688
3040.00	22.73	74.720	3020.30	40.25	141.92	2.59	36.37	39.98409148	-104.93316355
3129.00	25.24	73.720	3101.61	50.10	176.73	2.86	45.30	39.98411853	-104.93303934
3219.00	29.23	75.580	3181.61	60.96	216.45	4.53	55.83	39.98414833	-104.93289761
3308.00	29.90	73.330	3259.03	72.73	258.74	1.46	66.86	39.98418065	-104.93274667
3398.00	29.89	69.900	3337.06	86.87	301.30	1.90	75.97	39.98421947	-104.93259482
3487.00	30.08	69.040	3414.15	102.47	342.95	0.53	83.37	39.98426229	-104.93244618
3577.00	30.13	69.890	3492.01	118.31	385.22	0.48	90.88	39.98430576	-104.93229532
3666.00	30.18	67.880	3568.96	134.41	426.92	1.14	97.86	39.98434997	-104.93214651
3756.00	30.09	67.000	3646.80	151.75	468.65	0.50	103.80	39.98439755	-104.93199761
3845.00	30.02	66.800	3723.83	169.23	509.65	0.14	109.23	39.98444555	-104.93185130
3935.00	30.02	66.540	3801.76	187.07	550.99	0.14	114.54	39.98449450	-104.93170376
4024.00	30.11	64.760	3878.79	205.45	591.61	1.01	119.01	39.98454496	-104.93155881
4114.00	30.05	62.340	3956.67	225.54	631.99	1.35	121.89	39.98460010	-104.93141472
4203.00	30.12	60.320	4033.68	246.94	671.13	1.14	123.01	39.98465885	-104.93127504
4292.00	30.04	61.630	4110.70	268.58	710.13	0.74	123.85	39.98471825	-104.93113586
4381.00	30.08	63.420	4187.73	289.15	749.68	1.01	125.89	39.98477471	-104.93099472
4471.00	30.06	67.400	4265.62	307.90	790.67	2.22	130.23	39.98482619	-104.93084847
4560.00	30.13	69.590	4342.63	324.26	832.18	1.24	136.90	39.98487109	-104.93070032
4650.00	30.05	70.980	4420.50	339.48	874.66	0.78	145.04	39.98491287	-104.93054874
4740.00	30.09	72.860	4498.39	353.47	917.52	1.05	154.43	39.98495127	-104.93039578
4829.00	30.15	72.750	4575.37	366.68	960.18	0.09	164.41	39.98498751	-104.93024352
4919.00	30.14	70.550	4653.20	380.90	1003.08	1.23	173.62	39.98502656	-104.93009046
5008.00	30.01	68.660	4730.22	396.44	1044.88	1.07	181.14	39.98506922	-104.92994129
5098.00	30.16	67.870	4808.10	413.15	1086.78	0.47	187.71	39.98511507	-104.92979173
5187.00	29.99	67.880	4885.12	429.95	1128.10	0.19	193.90	39.98516118	-104.92964429
5276.00	30.15	68.440	4962.14	446.54	1169.49	0.36	200.31	39.98520671	-104.92949657
5366.00	30.08	67.930	5039.99	463.32	1211.42	0.29	206.82	39.98525277	-104.92934697
5455.00	30.11	67.250	5116.99	480.33	1252.67	0.38	212.80	39.98529947	-104.92919974
5545.00	30.18	67.850	5194.82	497.59	1294.44	0.34	218.82	39.98534684	-104.92905067
5634.00	30.01	69.320	5271.82	513.89	1335.99	0.85	225.56	39.98539157	-104.92890242
5724.00	30.16	73.410	5349.71	528.29	1378.72	2.28	234.53	39.98543110	-104.92874993
5813.00	30.19	74.380	5426.65	540.70	1421.70	0.55	245.35	39.98546516	-104.92859656
5903.00	30.10	74.090	5504.48	552.98	1465.19	0.19	256.55	39.98549886	-104.92844133
5992.00	30.10	72.450	5581.48	565.83	1507.93	0.92	266.87	39.98553412	-104.92828880
6082.00	29.83	70.580	5659.45	580.07	1550.56	1.08	275.93	39.98557323	-104.92813667
6171.00	29.96	71.320	5736.61	594.55	1592.49	0.44	284.44	39.98561296	-104.92798704
6260.00	29.95	72.070	5813.72	608.51	1634.68	0.42	293.53	39.98565127	-104.92783648
6350.00	29.77	72.770	5891.77	622.04	1677.40	0.44	303.24	39.98568841	-104.92768404
6439.00	29.95	73.420	5968.95	634.93	1719.79	0.42	313.36	39.98572378	-104.92753274
6529.00	29.79	72.750	6047.00	647.97	1762.68	0.41	323.59	39.98575956	-104.92737971
6618.00	29.81	72.520	6124.23	661.17	1804.89	0.13	333.35	39.98579579	-104.92722905
6707.00	29.85	72.380	6201.44	674.52	1847.10	0.09	342.97	39.98583243	-104.92707842
6797.00	30.10	71.670	6279.40	688.40	1889.87	0.48	352.42	39.98587052	-104.92692578
6886.00	30.13	70.490	6356.39	702.87	1932.11	0.67	361.08	39.98591025	-104.92677504
6975.00	30.06	70.280	6433.39	717.86	1974.15	0.14	369.20	39.98595137	-104.92662502
7065.00	29.98	72.200	6511.32	732.34	2016.78	1.07	378.06	39.98599111	-104.92647289
7154.00	30.06	71.850	6588.38	746.08	2059.13	0.22	387.42	39.98602882	-104.92632174
7243.00	30.12	68.880	6665.39	761.07	2101.15	1.67	395.52	39.98606996	-104.92617180
7333.00	30.09	65.050	6743.26	778.72	2142.67	2.13	401.08	39.98611842	-104.92602361
7422.00	30.06	65.970	6820.27	797.21	2183.26	0.52	405.44	39.98616916	-104.92587877
7511.00	30.18	69.020	6897.26	814.30	2224.51	1.72	411.35	39.98621606	-104.92573156
7600.00	30.09	68.390	6974.23	830.53	2266.14	0.37	418.19	39.98626059	-104.92558299
7690.00	30.01	67.780	7052.14	847.35	2307.95	0.35	424.61	39.98630675	-104.92543378
7779.00	29.70	66.490	7129.33	864.56	2348.77	0.80	430.20	39.98635399	-104.92528809
7869.00	30.22	66.100	7207.30	882.63	2389.92	0.62	435.21	39.98640359	-104.92514123
7958.00	29.93	68.460	7284.32	899.86	2431.06	1.37	440.94	39.98645086	-104.92499444
8047.00	29.93	73.380	7361.46	914.36	2472.99	2.76	449.42	39.98649067	-104.92484479
8137.00	27.38	94.730	7440.64	919.09	2515.25	11.66	466.53	39.98650364	-104.92469399

MD[ft]	Inc[deg]	Azi[deg]	TVD[ft]	North[ft]	East[ft]	Dogleg [deg/100ft]	Vertical Section[ft]	Lat - NAD 83	Long - NAD 83
8226.00	27.66	118.660	7519.81	907.46	2553.89	12.36	495.97	39.98647170	-104.92455609
8315.00	29.58	134.510	7598.05	882.11	2587.73	8.77	534.88	39.98640211	-104.92443532
8404.00	35.95	141.680	7672.88	846.16	2619.64	8.37	581.98	39.98630342	-104.92432147
8494.00	45.20	146.500	7741.18	798.70	2653.73	10.85	640.14	39.98617311	-104.92419984
8583.00	53.47	152.230	7799.16	740.60	2687.89	10.49	707.54	39.98601361	-104.92407794
8672.00	59.07	159.810	7848.61	673.01	2717.78	9.47	781.00	39.98582807	-104.92397131
8762.00	66.75	167.050	7889.60	596.29	2740.43	11.13	858.73	39.98561746	-104.92389053
8851.00	75.38	172.430	7918.47	513.55	2755.30	11.25	937.77	39.98539032	-104.92383748
8941.00	83.89	176.900	7934.66	425.50	2763.47	10.64	1018.04	39.98514862	-104.92380834
8966.74	85.07	177.700	7937.14	399.91	2764.68	5.53	1040.79	39.98507837	-104.92380405
9030.00	87.97	179.660	7940.98	336.79	2766.13	5.53	1096.12	39.98490511	-104.92379889
9099.00	87.75	180.700	7943.55	267.84	2765.92	1.54	1155.66	39.98471583	-104.92379969
9119.00	87.69	181.000	7944.35	247.86	2765.62	1.54	1172.80	39.98466098	-104.92380076
9209.00	87.29	180.920	7948.29	157.96	2764.11	0.45	1249.81	39.98441420	-104.92380617
9298.00	87.32	180.720	7952.47	69.07	2762.84	0.23	1326.08	39.98417018	-104.92381074
9387.00	86.80	180.450	7957.04	-19.81	2761.93	0.66	1402.51	39.98392620	-104.92381402
9477.00	86.68	180.140	7962.16	-109.66	2761.47	0.37	1480.01	39.98367954	-104.92381570
9566.00	89.11	179.120	7965.43	-198.59	2762.05	2.96	1557.23	39.98343542	-104.92381369
9656.00	88.95	177.510	7966.95	-288.54	2764.69	1.80	1636.37	39.98318851	-104.92380428
9745.00	88.89	177.280	7968.63	-377.43	2768.74	0.27	1715.30	39.98294449	-104.92378988
9835.00	88.83	179.450	7970.42	-467.37	2771.30	2.41	1794.40	39.98269760	-104.92378076
9924.00	88.37	180.110	7972.59	-556.34	2771.65	0.90	1871.54	39.98245336	-104.92377957
10014.00	88.43	180.620	7975.10	-646.31	2771.07	0.57	1949.08	39.98220641	-104.92378166
10103.00	88.52	179.770	7977.47	-735.27	2770.77	0.96	2025.89	39.98196218	-104.92378277
10193.00	88.58	179.750	7979.75	-825.24	2771.15	0.07	2103.91	39.98171520	-104.92378146
10282.00	88.58	180.150	7981.96	-914.22	2771.23	0.45	2180.92	39.98147097	-104.92378122
10371.00	88.49	181.540	7984.23	-1003.17	2769.91	1.56	2257.22	39.98122677	-104.92378594
10461.00	88.43	180.870	7986.65	-1093.12	2768.02	0.75	2334.09	39.98097985	-104.92379272
10550.00	88.55	180.410	7989.00	-1182.08	2767.03	0.53	2410.55	39.98073564	-104.92379631
10640.00	88.43	179.970	7991.37	-1272.05	2766.73	0.51	2488.23	39.98048867	-104.92379741
10729.00	88.40	180.130	7993.83	-1361.02	2766.65	0.18	2565.16	39.98024445	-104.92379772
10819.00	91.02	180.860	7994.28	-1451.01	2765.87	3.02	2642.62	39.97999743	-104.92380053
10908.00	91.02	182.460	7992.70	-1539.95	2763.30	1.80	2718.27	39.97975326	-104.92380976
10997.00	91.11	183.320	7991.05	-1628.82	2758.81	0.97	2792.90	39.97950930	-104.92382581
11087.00	90.95	184.130	7989.43	-1718.62	2752.96	0.92	2867.65	39.97926281	-104.92384670
11176.00	90.80	183.640	7988.07	-1807.40	2746.93	0.58	2941.44	39.97901909	-104.92386825
11265.00	91.72	182.280	7986.11	-1896.26	2742.34	1.84	3016.00	39.97877517	-104.92388468
11354.00	90.95	178.970	7984.04	-1985.22	2741.37	3.82	3092.47	39.97853097	-104.92388818
11444.00	91.60	180.400	7982.04	-2075.19	2741.86	1.74	3170.56	39.97828399	-104.92388645
11533.00	91.79	181.740	7979.40	-2164.13	2740.20	1.52	3246.67	39.97803983	-104.92389241
11622.00	91.69	181.020	7976.70	-2253.07	2738.06	0.82	3322.53	39.97779570	-104.92390009
11712.00	91.85	178.400	7973.92	-2343.01	2738.52	2.92	3400.57	39.97754879	-104.92389850
11801.00	91.88	175.650	7971.02	-2431.84	2743.13	3.09	3479.73	39.97730495	-104.92388206
11890.00	90.52	174.840	7969.16	-2520.51	2750.51	1.78	3560.14	39.97706154	-104.92385578
11980.00	89.38	175.880	7969.24	-2610.21	2757.79	1.71	3641.39	39.97681529	-104.92382984
12069.00	89.45	177.930	7970.15	-2699.07	2762.59	2.30	3720.68	39.97657136	-104.92381273
12159.00	89.48	180.740	7970.99	-2789.05	2763.64	3.12	3799.04	39.97632435	-104.92380904
12248.00	89.51	181.420	7971.77	-2878.03	2761.96	0.76	3875.18	39.97608010	-104.92381506
12337.00	89.42	182.120	7972.60	-2966.99	2759.21	0.79	3950.75	39.97583591	-104.92382490
12427.00	90.00	182.100	7973.06	-3056.92	2755.90	0.64	4026.90	39.97558903	-104.92383676
12516.00	92.43	182.450	7971.17	-3145.83	2752.37	2.76	4102.04	39.97534498	-104.92384940
12606.00	90.43	179.940	7968.92	-3235.77	2750.49	3.57	4178.90	39.97509808	-104.92385613
12695.00	89.48	180.430	7968.99	-3324.77	2750.20	1.20	4255.75	39.97485377	-104.92385719
12785.00	89.48	179.640	7969.81	-3414.76	2750.15	0.88	4333.58	39.97460673	-104.92385742
12874.00	90.03	179.590	7970.19	-3503.76	2750.75	0.62	4410.87	39.97436242	-104.92385532
12963.00	90.15	178.240	7970.05	-3592.74	2752.43	1.52	4488.69	39.97411816	-104.92384934
13053.00	90.31	178.640	7969.69	-3682.71	2754.88	0.48	4567.75	39.97387119	-104.92384064
13142.00	89.97	179.680	7969.47	-3771.69	2756.19	1.23	4645.39	39.97362691	-104.92383602
13231.00	90.65	181.710	7968.99	-3860.68	2755.11	2.41	4721.83	39.97338263	-104.92383990
13321.00	91.08	182.290	7967.63	-3950.62	2751.97	0.80	4798.06	39.97313575	-104.92385114
13410.00	93.51	183.720	7964.07	-4039.41	2747.31	3.17	4872.54	39.97289200	-104.92386781
13500.00	92.21	181.510	7959.58	-4129.20	2743.21	2.85	4948.16	39.97264552	-104.92388247
13589.00	90.98	179.410	7957.10	-4218.16	2742.49	2.73	5024.76	39.97240133	-104.92388505
13679.00	89.08	179.520	7957.05	-4308.15	2743.33	2.11	5103.03	39.97215429	-104.92388209
13769.00	90.31	178.360	7957.53	-4398.13	2745.00	1.88	5181.71	39.97190729	-104.92387618
13858.00	88.15	174.430	7958.73	-4486.92	2750.59	5.04	5261.33	39.97166354	-104.92385626
13947.00	87.97	171.480	7961.74	-4575.19	2761.50	3.32	5343.16	39.97142123	-104.92381738
14037.00	87.85	172.420	7965.02	-4664.24	2774.09	1.05	5426.52	39.97117677	-104.92377248
14051.00	87.85	172.560	7965.55	-4678.11	2775.92	0.98	5439.44	39.97113870	-104.92376596
14085.00	87.85	172.890	7966.83	-4711.81	2780.23	0.98	5470.75	39.97104618	-104.92375062
14090.66	87.85	172.940	7967.04	-4717.43	2780.92	0.98	5475.96	39.97103077	-104.92374813
14126.00	87.85	173.290	7968.36	-4752.49	2785.16	0.98	5508.41	39.97093452	-104.92373304
14166.00	87.94	173.610	7969.83	-4792.20	2789.72	0.83	5545.05	39.97082551	-104.92371679
14182.00	87.94	173.610	7970.41	-4808.09	2791.50	==>	5559.69	39.97078189	-104.92371045
14190.00	87.94	173.610	7970.70	-4816.04	2792.39	==>	5567.01	39.97076008	-104.92370728

Comments

MD[ft]	TVD[ft]	North[ft]	East[ft]	Lat - NAD 83	Long - NAD 83	Comment
1712.00	1711.93	1.22	-1.26	39.98398436	-104.93367448	9.625" Csg Shoe: 1,712' MD/TVD
8966.74	7937.14	399.91	2764.68	39.98507837	-104.92380405	460 Setback: 8967 / 7937 MD/TVD, 460 FNL, 494 FEL Sec 07
9099.00	7943.55	267.84	2765.92	39.98471583	-104.92379969	Top Perf: 9099 / 7944 MD/TVD, 592 FNL, 493 FEL Sec 07
14051.00	7965.55	-4678.11	2775.92	39.97113870	-104.92376596	Btm Perf: 14,051 / 7966 MD/TVD, 271 FNL, 494 FEL Sec 18
14085.00	7966.83	-4711.81	2780.23	39.97104618	-104.92375062	Btm Toe Sub: 14,085 / 7967 MD/TVD, 304 FNL, 489 FEL Sec 18
14090.66	7967.04	-4717.43	2780.92	39.97103077	-104.92374813	310 Setback: 14,091 / 7967 MD/TVD, 310 FNL, 489 FEL Sec 18
14182.00	7970.41	-4808.09	2791.50	39.97078189	-104.92371045	PBTD: 14,182 / 7970 MD/TVD, 401 FNL, 478 FEL Sec 18
14190.00	7970.70	-4816.04	2792.39	39.97076008	-104.92370728	5.5" Csg: 14,190 / 7971 MD/TVD, 408 FNL, 477 FEL Sec 18
14190.00	7970.70	-4816.04	2792.39	39.97076008	-104.92370728	BHL: 14,190 / 7971 MD/TVD, 409 FNL, 477 FEL Sec 18

Hole Sections

Diameter [in]	Start MD[ft]	Start TVD[ft]	Start North[ft]	Start East[ft]	End MD[ft]	End TVD[ft]	End North[ft]	End East[ft]
13.500	0.00	0.00	0.00	0.00	1712.00	1711.93	1.22	-1.26
8.500	1712.00	1711.93	1.22	-1.26	14190.00	7970.70	-4816.04	2792.39

Casings

Name	Top MD[ft]	Top TVD[ft]	Top North[ft]	Top East[ft]	Shoe MD[ft]	Shoe TVD[ft]	Shoe North[ft]	Shoe East[ft]
9 5/8in Casing	0.00	0.00	0.00	0.00	1712.00	1711.93	1.22	-1.26
5 1/2in Casing	0.00	0.00	0.00	0.00	14190.00	7970.70	-4816.04	2792.39

Survey Tool Program

Reference	Survey Name	MD[ft]	TVD[ft]	Survey Tool
323903	As Drilled - 20180222	14190.00	7970.70	MWD

Coordinates are from Slot
MD's and TVD's are from Rig Floor 5144.5ft above Mean Sea Level
Vertical Section is from 0.00 0.00 on azimuth 149.890 degrees
Bottom hole distance is 5567.01 Feet on azimuth 149.89 degrees from Wellhead
Calculation method uses Minimum Curvature method
Prepared by Great Western Operating Co.
Date Printed: