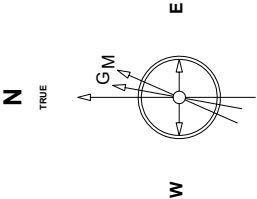


Great Western Operating Company, LLC

Created by	admin
Date plotted	4-Jun-2019
Plot reference is	B-Farm LD 18-037HC (AWB).
Ref wellpath is	B-Farm LD 18-037HC (AWP #1).
Coordinates are in	Feet reference E-06 - B-Farm LD 18-037HC.
True Vertical Depths are	reference Rig Datum.
Measured Depths are	reference Rig Datum.
Rig Datum:	Actual Datum #1
Rig Datum to Mean Sea Level:	5144.50 ft.
Plot North is aligned to	TRUE North.

Location	Colorado	Slot	E-06 - B-Farm LD 18-037HC
Field	Wattenburg	Well	B-Farm LD 18-037HC
Installation	B-Farm	Wellbore	B-Farm LD 18-037HC (AWB)

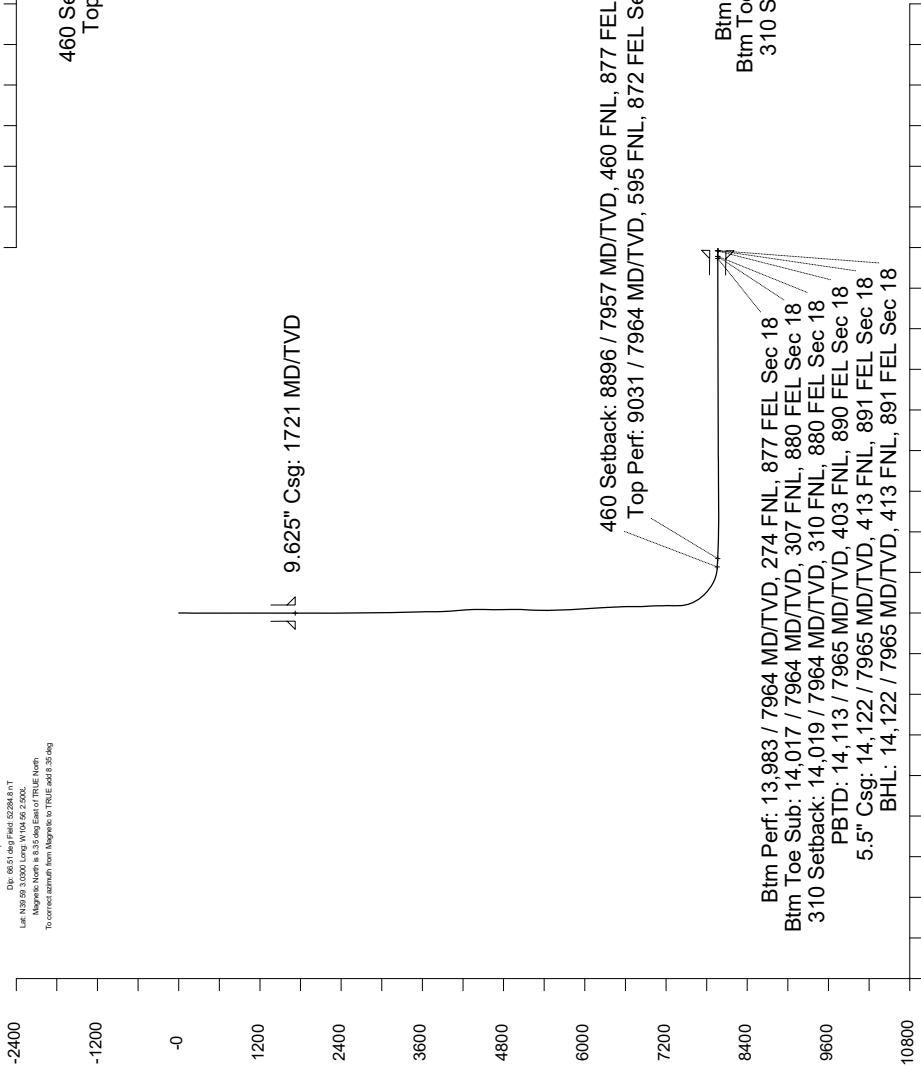


Scale 1 cm = 400 ft

East (Feet) ->

Scale 1 cm = 600 ft

<- True Vertical Depth (Feet)



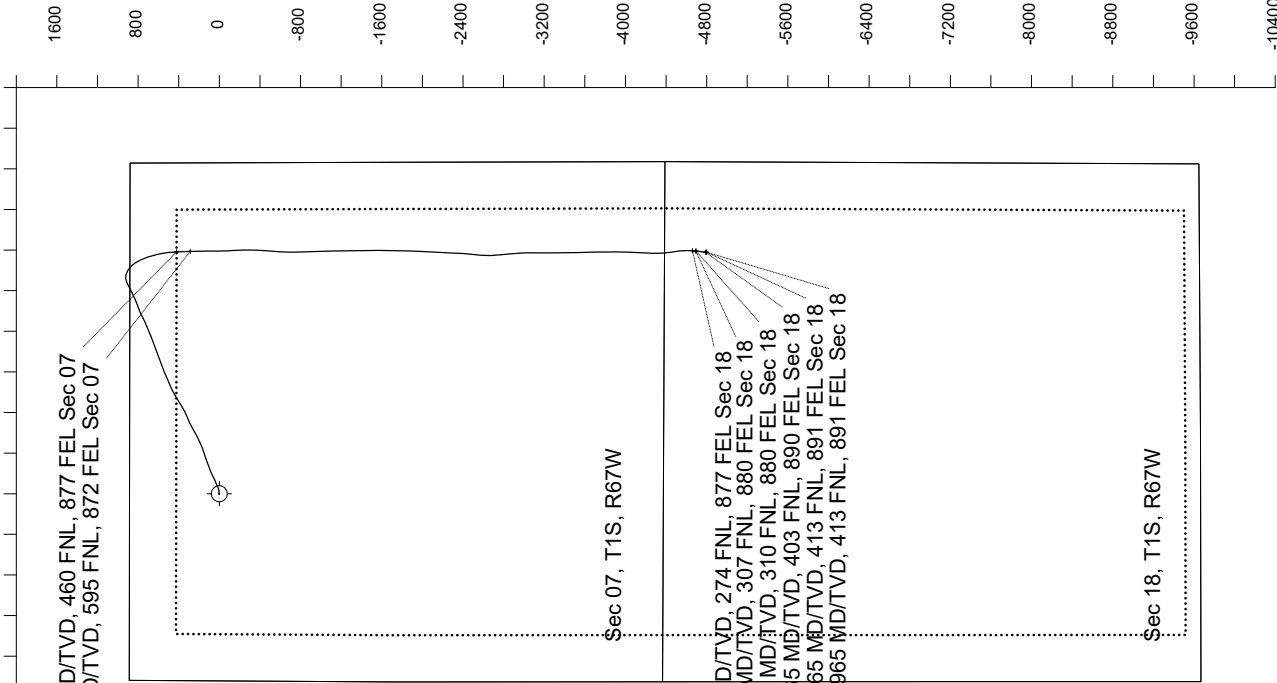
Scale 1 cm = 600 ft

Vertical Section (Feet) ->

Azimuth 153.63 with reference 0.00 N, 0.00 E from E-06 - B-Farm LD 18-037HC

<- North(Feet)

Scale 1 cm = 400 ft



Great Western Operating Co, LLC Directional Survey Report Wellpath: B-Farm LD 18-037HC MDs and TVDs are from Rig Floor 5144.5ft above Mean Sea Level

Wellbore Information

Date Created	Date Revised	API #	RKB above GL	Well Name
Nov-8-2018	Jun-4-2019	05-001-10091	20.00	B-Farm LD 18-037HC

Slot Coordinates

Latitude	Longitude
39.98392600	-104.93367000

Pad Information

Pad Name	Ground Elev.
B-Farm	5124.50

Field

Name
Wattenburg

Wellpath Report

MD[ft]	Inc[deg]	Azi[deg]	TVD[ft]	North[ft]	East[ft]	Dogleg [deg/100ft]	Vertical Section[ft]	Lat - NAD 83	Long - NAD 83
0.00	0.00	0.000	0.00	0.00	0.00		0.00	39.98392600	-104.93367000
20.00	0.00	326.110	20.00	0.00	0.00	==>	0.00	39.98392600	-104.93367000
119.00	0.22	326.110	119.00	0.16	-0.11	0.22	-0.19	39.98392643	-104.93367038
214.00	0.57	312.840	214.00	0.63	-0.55	0.38	-0.81	39.98392773	-104.93367198
309.00	0.88	301.680	308.99	1.33	-1.52	0.36	-1.87	39.98392966	-104.93367543
405.00	0.31	265.990	404.98	1.70	-2.41	0.68	-2.60	39.98393068	-104.93367859
500.00	0.40	141.280	499.98	1.43	-2.46	0.66	-2.37	39.98392992	-104.93367877
595.00	0.18	145.640	594.98	1.05	-2.17	0.23	-1.90	39.98392887	-104.93367773
691.00	0.22	119.660	690.98	0.83	-1.92	0.10	-1.60	39.98392828	-104.93367685
786.00	0.48	69.470	785.98	0.88	-1.39	0.40	-1.40	39.98392841	-104.93367496
881.00	0.92	51.800	880.97	1.49	-0.42	0.51	-1.52	39.98393009	-104.93367149
977.00	0.83	38.970	976.96	2.51	0.63	0.22	-1.97	39.98393288	-104.93366777
1070.00	0.18	338.240	1069.96	3.17	1.00	0.82	-2.40	39.98393469	-104.93366645
1166.00	1.01	262.570	1165.95	3.20	0.10	1.02	-2.82	39.98393478	-104.93366964
1261.00	0.92	222.580	1260.94	2.53	-1.25	0.70	-2.82	39.98393294	-104.93367444
1356.00	0.48	211.590	1355.93	1.63	-1.97	0.48	-2.33	39.98393047	-104.93367703
1452.00	0.22	207.110	1451.93	1.12	-2.26	0.27	-2.01	39.98392908	-104.93367808
1547.00	0.40	146.020	1546.93	0.68	-2.16	0.37	-1.57	39.98392787	-104.93367772
1640.00	0.31	136.270	1639.93	0.23	-1.81	0.12	-1.01	39.98392664	-104.93367645
1671.00	0.26	87.220	1670.93	0.17	-1.68	0.78	-0.90	39.98392648	-104.93367599
1700.00	0.41	76.660	1699.93	0.20	-1.51	0.56	-0.85	39.98392655	-104.93367540
1721.00	0.37	75.200	1720.93	0.24	-1.37	0.21	-0.82	39.98392665	-104.93367490
1800.00	0.21	64.430	1799.93	0.36	-1.00	0.21	-0.77	39.98392700	-104.93367356
1900.00	0.13	74.730	1899.93	0.47	-0.72	0.09	-0.74	39.98392730	-104.93367258
2000.00	0.14	14.910	1999.92	0.62	-0.58	0.13	-0.81	39.98392770	-104.93367208
2100.00	0.19	37.980	2099.92	0.87	-0.45	0.08	-0.98	39.98392839	-104.93367160
2200.00	0.86	99.710	2199.92	0.87	0.39	0.79	-0.61	39.98392840	-104.93366860
2300.00	0.11	143.950	2299.92	0.67	1.19	0.78	-0.07	39.98392784	-104.93366576
2400.00	0.14	111.920	2399.92	0.55	1.36	0.07	0.11	39.98392750	-104.93366515
2500.00	0.22	176.600	2499.92	0.31	1.48	0.20	0.38	39.98392685	-104.93366471
2600.00	0.15	161.490	2599.91	-0.01	1.54	0.08	0.69	39.98392598	-104.93366452
2700.00	0.17	134.280	2699.91	-0.23	1.68	0.08	0.96	39.98392536	-104.93366399
2800.00	0.27	129.930	2799.91	-0.49	1.97	0.10	1.31	39.98392466	-104.93366297
2853.00	0.20	145.390	2852.91	-0.65	2.12	0.18	1.52	39.98392423	-104.93366244
2956.00	1.54	70.670	2955.90	-0.34	3.53	1.46	1.87	39.98392508	-104.93365741
3045.00	4.07	76.570	3044.79	0.79	7.73	2.86	2.72	39.98392818	-104.93364242
3134.00	5.95	82.720	3133.44	2.11	15.38	2.19	4.94	39.98393180	-104.93361513
3224.00	7.75	83.860	3222.80	3.35	26.04	2.01	8.56	39.98393520	-104.93357708
3313.00	9.56	75.940	3310.78	5.79	39.18	2.43	12.21	39.98394189	-104.93353020
3403.00	12.42	67.790	3399.13	11.27	55.39	3.61	14.51	39.98395692	-104.93347234
3492.00	15.86	65.830	3485.42	19.87	75.35	3.90	15.67	39.98398053	-104.93340111
3582.00	19.84	68.580	3571.07	30.48	100.80	4.52	17.46	39.98400968	-104.93331029
3672.00	23.00	66.140	3654.85	43.18	131.11	3.65	19.54	39.98404452	-104.93320214
3761.00	24.97	62.920	3736.16	58.76	163.74	2.66	20.07	39.98408731	-104.93308570
3850.00	27.25	64.360	3816.07	76.13	198.84	2.66	20.09	39.98413499	-104.93296044
3940.00	29.73	68.790	3895.18	93.13	238.23	3.62	22.36	39.98418164	-104.93281987
4029.00	29.73	70.800	3972.46	108.37	279.64	1.12	27.10	39.98422348	-104.93267208
4119.00	30.15	69.580	4050.45	123.60	321.90	0.82	32.22	39.98426528	-104.93252129
4208.00	29.28	70.120	4127.75	138.79	363.32	1.02	37.00	39.98430700	-104.93237350
4297.00	30.10	73.920	4205.07	152.38	405.23	2.31	43.44	39.98434428	-104.93222392
4387.00	30.11	68.600	4282.95	166.87	447.94	2.96	49.43	39.98438406	-104.93207151
4476.00	30.09	65.810	4359.95	184.16	489.08	1.57	52.21	39.98443152	-104.93192470
4566.00	30.00	64.410	4437.86	203.12	529.95	0.79	53.37	39.98448357	-104.93177884
4655.00	30.08	63.000	4514.90	222.86	569.89	0.80	53.43	39.98453775	-104.93163631
4745.00	29.95	60.560	4592.84	244.14	609.56	1.36	51.97	39.98459617	-104.93149477
4835.00	30.04	60.350	4670.78	266.33	648.70	0.15	49.48	39.98465707	-104.93135509
4924.00	29.73	63.250	4747.95	287.28	687.77	1.66	48.06	39.98471459	-104.93121567
5014.00	29.92	67.730	4826.04	305.83	728.47	2.48	49.51	39.98476551	-104.93107041
5103.00	30.10	67.500	4903.11	322.79	769.63	0.24	52.60	39.98481205	-104.93092353
5192.00	30.18	62.940	4980.09	341.51	810.18	2.57	53.84	39.98486343	-104.93077884
5282.00	30.14	59.910	5057.91	363.13	849.88	1.69	52.09	39.98492278	-104.93063717
5371.00	30.29	57.360	5134.82	386.44	888.11	1.45	48.19	39.98498676	-104.93050072
5460.00	30.05	58.310	5211.76	410.25	925.97	0.60	43.67	39.98505212	-104.93036561
5550.00	30.10	60.410	5289.65	433.23	964.77	1.17	40.31	39.98511521	-104.93022714
5640.00	30.17	62.740	5367.49	454.73	1004.50	1.30	38.69	39.98517423	-104.93008536
5729.00	30.21	63.810	5444.42	474.86	1044.48	0.61	38.41	39.98522947	-104.92994271
5819.00	30.19	67.860	5522.21	493.38	1085.76	2.26	40.15	39.98528032	-104.92979539
5908.00	30.20	67.010	5599.14	510.56	1127.09	0.48	43.12	39.98532746	-104.92964788
5997.00	30.12	66.140	5676.09	528.33	1168.12	0.50	45.41	39.98537625	-104.92950146
6087.00	30.22	67.320	5753.90	546.20	1209.67	0.67	47.86	39.98542530	-104.92935318
6176.00	30.17	69.040	5830.82	562.84	1251.22	0.97	51.40	39.98547096	-104.92920490
6266.00	30.16	70.300	5908.64	578.55	1293.63	0.70	56.16	39.98551408	-104.92905357
6355.00	30.31	71.640	5985.53	593.16	1335.99	0.78	61.88	39.98555419	-104.92890239
6445.00	29.80	69.590	6063.43	608.11	1378.51	1.27	67.37	39.98559523	-104.92875066
6534.00	30.05	68.490	6140.57	624.00	1419.97	0.68	71.55	39.98563882	-104.92860271
6623.00	29.71	69.930	6217.74	639.74	1461.41	0.89	75.86	39.98568202	-104.92845480
6712.00	30.01	69.060	6294.92	655.26	1502.92	0.59	80.38	39.98572463	-104.92830669
6802.00	30.00	67.480	6372.86	671.92	1544.72	0.88	84.02	39.98577036	-104.92815750
6891.00	29.99	68.480	6449.94	688.60	1585.97	0.56	87.39	39.98581614	-104.92801030
6981.00	30.01	67.690	6527.88	705.40	1627.72	0.44	90.88	39.98586224	-104.92786132
7070.00	30.04	67.550	6604.94	722.35	1668.90	0.09	93.98	39.98590878	-104.92771436
7159.00	30.00	63.410	6682.01	740.82	1709.38	2.33	95.41	39.98595947	-104.92756987
7249.00	29.43	61.630	6760.18	761.40	1748.96	1.17	94.55	39.98601595	-104.92742863
7338.00	29.91	67.160	6837.52	780.41	1788.66	3.12	95.15	39.98606812	-104.92728696
7427.00	30.01	70.490	6914.63	796.45	1830.09	1.87	99.18	39.98611216	-104.92713910
7517.00	30.07	69.400	6992.55	811.90	1872.41	0.61	104.13	39.98615456	-104.92698807
7606.00	30.05	65.040	7069.58	829.15	1913.49	2.45	106.92	39.98620191	-104.92684147
7695.00	29.99	64.290	7146.65	848.21	1953.73	0.43	107.72	39.98625420	-104.92669785
7785.00	30.06	64.370	7224.57	867.72	1994.32	0.09	108.27	39.98630774	-104.92655300
7874.00	30.06	63.120	7301.60	887.44	2034.30	0.70	108.35	39.98636187	-104.92641032
7963.00	29.61	63.490	7378.80	907.33	2073.86	0.55	108.10	39.98641646	-104.92626915
8053.00	26.90	80.460	7458.20	920.65	2113.91	9.39	113.95	39.98645303	-104.92612623
8142.00	27.32	101.580	7537.61	919.89	2153.86	10.78	132.38	39.98645092	-104.92598361
8231.00	31.39	119.530	7615.31	904.33	2194.13	10.85	164.21	39.98640819	-104.92583993
8321.00	36.73	133.130	7689.96	874.31	2234.26	10.31	208.92	39.98632579	-104.92569676
8410.00	43.53	145.720	7758.08	830.67	2271.04	11.87	264.36	39.98620597	-

MD[ft]	Inc[deg]	Azi[deg]	TVD[ft]	North[ft]	East[ft]	Dogleg [deg/100ft]	Vertical Section[ft]	Lat - NAD 83	Long - NAD 83
8767.00	76.01	171.020	7939.41	547.41	2369.74	11.79	561.98	39.98542837	-104.92521338
8857.00	85.50	176.630	7953.86	459.22	2379.22	12.20	645.20	39.98518630	-104.92517958
8895.89	85.93	177.040	7956.76	420.50	2381.36	1.53	680.85	39.98508000	-104.92517195
8896.62	85.94	177.050	7956.82	419.77	2381.40	1.53	681.52	39.98507801	-104.92517182
8946.00	86.49	177.580	7960.08	370.56	2383.71	1.55	726.64	39.98494290	-104.92516360
9031.00	87.72	178.320	7964.37	285.72	2386.74	1.69	804.00	39.98471002	-104.92515280
9035.00	87.78	178.360	7964.52	281.73	2386.86	1.69	807.63	39.98469905	-104.92515239
9125.00	88.68	179.240	7967.30	191.79	2388.74	1.40	889.04	39.98445217	-104.92514570
9214.00	88.65	179.740	7969.38	102.82	2389.53	0.56	969.11	39.98420793	-104.92514291
9303.00	88.83	180.720	7971.33	13.84	2389.17	1.12	1048.67	39.98396368	-104.92514421
9393.00	87.91	177.080	7973.90	-76.09	2390.90	4.17	1130.01	39.98371681	-104.92513808
9482.00	89.35	176.090	7976.02	-164.90	2396.20	1.96	1211.94	39.98347301	-104.92511920
9572.00	89.17	178.220	7977.19	-254.78	2400.67	2.37	1294.45	39.98322629	-104.92510329
9661.00	89.29	183.290	7978.38	-343.73	2399.49	5.70	1373.63	39.98298210	-104.92510751
9751.00	89.23	182.700	7979.54	-433.60	2394.79	0.66	1452.06	39.98273540	-104.92512432
9840.00	92.59	185.240	7978.13	-522.36	2388.63	4.73	1528.85	39.98249176	-104.92514632
9930.00	90.12	183.120	7976.00	-612.08	2382.08	3.62	1606.33	39.98224546	-104.92516975
10019.00	90.06	180.780	7975.86	-701.02	2379.05	2.63	1684.67	39.98200131	-104.92518059
10109.00	90.09	178.070	7975.75	-791.01	2379.95	3.01	1765.70	39.98175428	-104.92517740
10198.00	90.25	178.240	7975.48	-879.96	2382.82	0.26	1846.67	39.98151010	-104.92516720
10287.00	90.40	179.460	7974.98	-968.94	2384.60	1.38	1927.19	39.98126584	-104.92516086
10377.00	90.28	178.340	7974.44	-1058.92	2386.33	1.25	2008.57	39.98101884	-104.92515472
10466.00	90.46	177.640	7973.87	-1147.87	2389.45	0.81	2089.65	39.98077468	-104.92514362
10556.00	90.43	177.780	7973.17	-1237.79	2393.05	0.16	2171.82	39.98052782	-104.92513081
10645.00	90.46	178.120	7972.48	-1326.73	2396.23	0.38	2252.92	39.98028367	-104.92511949
10745.00	90.43	179.490	7971.70	-1426.71	2398.32	1.37	2343.42	39.98000924	-104.92511208
10824.00	90.40	180.720	7971.13	-1505.70	2398.17	1.56	2414.13	39.97979238	-104.92511262
10913.00	89.82	181.340	7970.96	-1594.69	2396.57	0.95	2493.15	39.97954811	-104.92511836
11003.00	90.00	181.880	7971.10	-1684.65	2394.04	0.63	2572.63	39.97930115	-104.92512742
11092.00	89.85	180.780	7971.22	-1773.62	2391.98	1.25	2651.43	39.97905691	-104.92513482
11182.00	90.12	181.260	7971.24	-1863.61	2390.38	0.61	2731.34	39.97880989	-104.92514056
11271.00	90.06	182.440	7971.10	-1952.56	2387.50	1.33	2809.77	39.97856571	-104.92515085
11360.00	90.00	183.120	7971.05	-2041.46	2383.19	0.77	2887.50	39.97832169	-104.92516628
11449.00	90.00	182.680	7971.05	-2130.34	2378.68	0.49	2965.14	39.97807769	-104.92518238
11539.00	90.12	182.810	7970.96	-2220.24	2374.37	0.20	3043.77	39.97783091	-104.92519779
11628.00	90.25	182.620	7970.67	-2309.14	2370.16	0.26	3121.54	39.97758688	-104.92521286
11717.00	90.28	183.330	7970.26	-2398.02	2365.54	0.80	3199.13	39.97734290	-104.92522937
11815.00	90.09	186.210	7969.94	-2495.67	2357.39	2.95	3283.00	39.97707484	-104.92525848
11896.00	91.72	185.970	7968.66	-2576.20	2348.80	2.03	3351.33	39.97685378	-104.92528916
11985.00	91.39	177.660	7966.24	-2665.04	2345.98	9.34	3429.69	39.97660990	-104.92529924
12075.00	89.85	175.200	7965.27	-2754.85	2351.59	3.22	3512.64	39.97636335	-104.92527927
12164.00	89.48	174.040	7965.79	-2843.46	2359.93	1.37	3595.73	39.97612012	-104.92524953
12254.00	89.91	175.850	7966.27	-2933.10	2367.86	2.07	3679.58	39.97587404	-104.92522127
12343.00	89.97	178.390	7966.36	-3021.98	2372.33	2.85	3761.20	39.97563005	-104.92520534
12432.00	90.09	180.430	7966.32	-3110.97	2373.25	2.30	3841.33	39.97538576	-104.92520210
12522.00	89.94	180.790	7966.29	-3200.97	2372.29	0.43	3921.54	39.97513872	-104.92520555
12611.00	90.00	179.590	7966.34	-3289.97	2372.00	1.35	4001.15	39.97489441	-104.92520664
12701.00	89.97	179.360	7966.36	-3379.96	2372.82	0.26	4082.15	39.97464736	-104.92520373
12790.00	90.00	179.140	7966.39	-3468.95	2373.99	0.25	4162.40	39.97440307	-104.92519960
12879.00	89.91	178.250	7966.46	-3557.93	2376.01	1.01	4243.02	39.97415882	-104.92519240
12969.00	89.88	178.350	7966.62	-3647.89	2378.68	0.12	4324.81	39.97391187	-104.92518290
13058.00	89.94	179.190	7966.76	-3736.87	2380.59	0.95	4405.38	39.97366762	-104.92517612
13147.00	89.94	180.340	7966.85	-3825.87	2380.96	1.29	4485.28	39.97342331	-104.92517484
13237.00	89.91	179.270	7966.97	-3915.86	2381.26	1.19	4566.05	39.97317625	-104.92517378
13326.00	90.18	181.160	7966.90	-4004.86	2380.93	2.15	4645.64	39.97293195	-104.92517500
13416.00	90.00	183.520	7966.76	-4094.78	2377.26	2.63	4724.57	39.97268512	-104.92516814
13505.00	90.65	183.670	7966.26	-4183.60	2371.68	0.75	4801.68	39.97244129	-104.92520808
13595.00	90.65	181.290	7965.23	-4273.50	2367.78	2.64	4880.50	39.97219450	-104.92522201
13685.00	90.74	177.070	7964.14	-4363.47	2369.07	4.69	4961.68	39.97194754	-104.92521744
13774.00	90.18	170.720	7963.43	-4451.91	2378.53	7.16	5045.12	39.97170474	-104.92518372
13863.00	90.28	172.810	7963.07	-4539.99	2391.28	2.35	5129.70	39.97146296	-104.92513827
13953.00	89.26	182.700	7963.43	-4629.81	2394.80	11.05	5211.73	39.97121640	-104.92512574
13983.00	89.29	184.040	7963.81	-4659.75	2393.03	4.47	5237.78	39.97113420	-104.92513204
14016.94	89.32	185.560	7964.22	-4693.57	2390.20	4.47	5266.82	39.97104137	-104.92514218
14017.00	89.32	185.560	7964.23	-4693.63	2390.19	4.47	5266.87	39.97104120	-104.92514220
14018.86	89.32	185.640	7964.25	-4695.48	2390.01	4.48	5268.45	39.97103612	-104.92514285
14042.00	89.35	186.680	7964.52	-4718.49	2387.52	4.48	5287.96	39.97097297	-104.92515172
14098.00	89.35	186.630	7965.15	-4774.11	2381.03	0.09	5334.91	39.97082030	-104.92517489
14112.53	89.35	186.630	7965.32	-4788.54	2379.36	==>	5347.09	39.97078068	-104.92518088
14113.00	89.35	186.630	7965.32	-4789.00	2379.30	==>	5347.49	39.97077940	-104.92518108
14122.00	89.35	186.630	7965.42	-4797.94	2378.26	==>	5355.04	39.97075486	-104.92518479

Comments						
MD[ft]	TVD[ft]	North[ft]	East[ft]	Lat - NAD 83	Long - NAD 83	Comment
1721.00	1720.93	0.24	-1.37	39.98392665	-104.93367490	9.625" Csg: 1721 MD/TVD
8895.89	7956.76	420.50	2381.36	39.98508000	-104.92517195	460 Setback: 8896 / 7957 MD/TVD, 460 FNL, 877 FEL Sec 07
9031.00	7964.37	285.72	2386.74	39.98471002	-104.92515280	Top Perf: 9031 / 7964 MD/TVD, 595 FNL, 872 FEL Sec 07
13983.00	7963.81	-4659.75	2393.03	39.97113420	-104.92513204	Btm Perf: 13,983 / 7964 MD/TVD, 274 FNL, 877 FEL Sec 18
14016.94	7964.22	-4693.57	2390.20	39.97104137	-104.92514218	Btm Toe Sub: 14,017 / 7964 MD/TVD, 307 FNL, 880 FEL Sec 18
14018.86	7964.25	-4695.48	2390.01	39.97103612	-104.92514285	310 Setback: 14,019 / 7964 MD/TVD, 310 FNL, 880 FEL Sec 18
14112.53	7965.32	-4788.54	2379.36	39.97078068	-104.92518088	PBTD: 14,113 / 7965 MD/TVD, 403 FNL, 890 FEL Sec 18
14122.00	7965.42	-4797.94	2378.26	39.97075486	-104.92518479	5.5" Csg: 14,122 / 7965 MD/TVD, 413 FNL, 891 FEL Sec 18
14122.00	7965.42	-4797.94	2378.26	39.97075486	-104.92518479	BHL: 14,122 / 7965 MD/TVD, 413 FNL, 891 FEL Sec 18

Hole Sections								
Diameter [in]	Start MD[ft]	Start TVD[ft]	Start North[ft]	Start East[ft]	End MD[ft]	End TVD[ft]	End North[ft]	End East[ft]
13.500	0.00	0.00	0.00	0.00	1721.00	1720.93	0.24	-1.37
8.500	1721.00	1720.93	0.24	-1.37	14122.00	7965.42	-4797.94	2378.26

Casings								
Name	Top MD[ft]	Top TVD[ft]	Top North[ft]	Top East[ft]	Shoe MD[ft]	Shoe TVD[ft]	Shoe North[ft]	Shoe East[ft]
9 5/8in Casing	0.00	0.00	0.00	0.00	1721.00	1720.93	0.24	-1.37
5 1/2in Casing	0.00	0.00	0.00	0.00	14122.00	7965.42	-4797.94	2378.26

Survey Tool Program				
Reference	Survey Name	MD[ft]	TVD[ft]	Survey Tool
486801	As Drilled - 20181108	14122.00	7965.42	MWD

Coordinates are from Slot
MD's and TVD's are from Rig Floor 5144.5ft above Mean Sea Level
Vertical Section is from 0.00 0.00 on azimuth 153.630 degrees
Bottom hole distance is 5355.04 Feet on azimuth 153.63 degrees from Wellhead
Calculation method uses Minimum Curvature method
Prepared by Great Western Operating Co.
Date Printed: