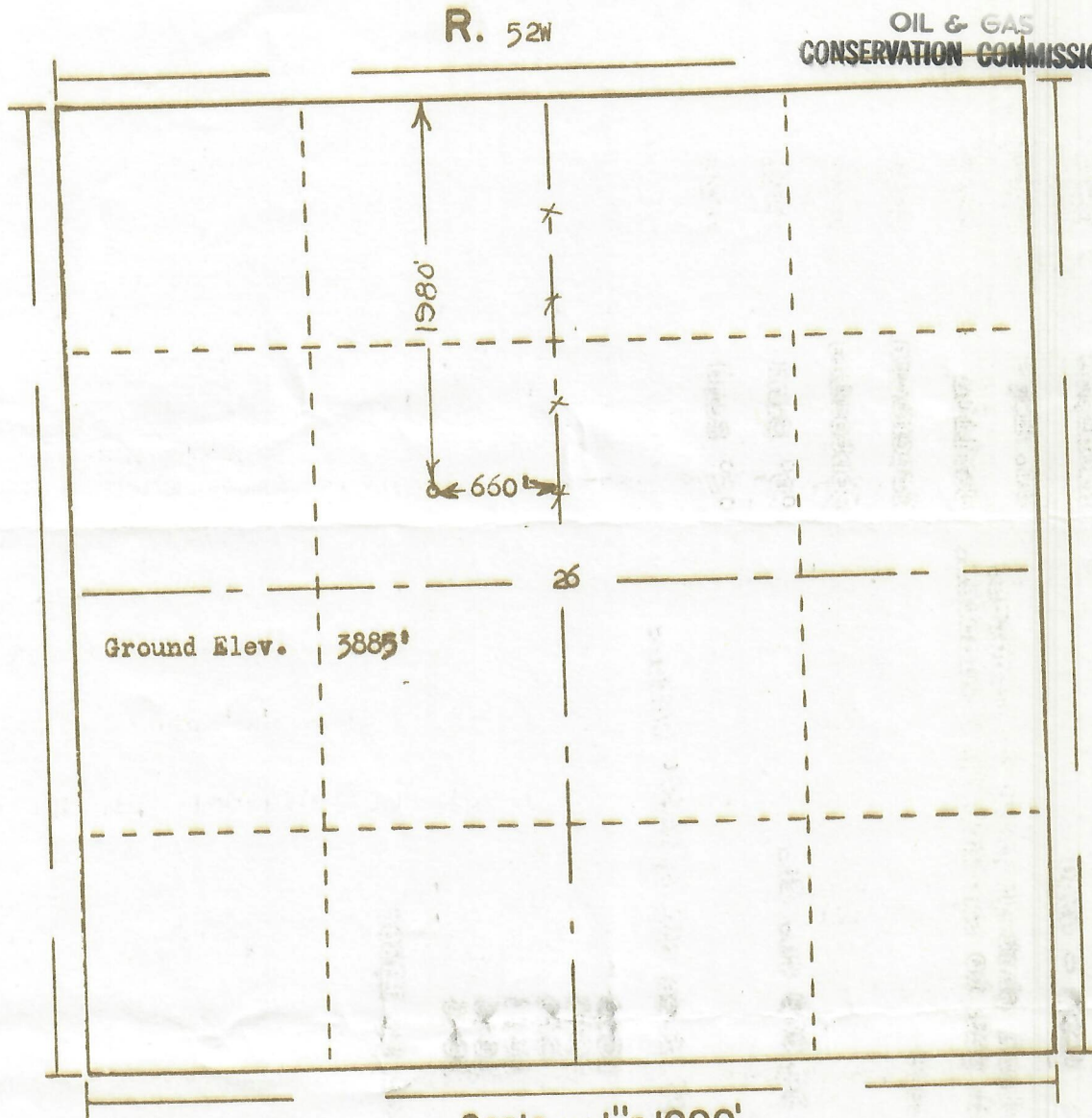




00255138

RECEIVED
FEB - 9 1966OIL & GAS
CONSERVATION COMMISSIONT.
9
N

Scale ... 1" = 1000'

Powers Surveyors, Inc. of Denver, Colorado
has in accordance with a request from Mr. Thurmond
for B.F. Allison estate determined the
Location of No. 2 Giacomini
to be QSE NW Section 26 Township 9N
Range 52W of the 6th Principal Meridian
Logan County, Colorado

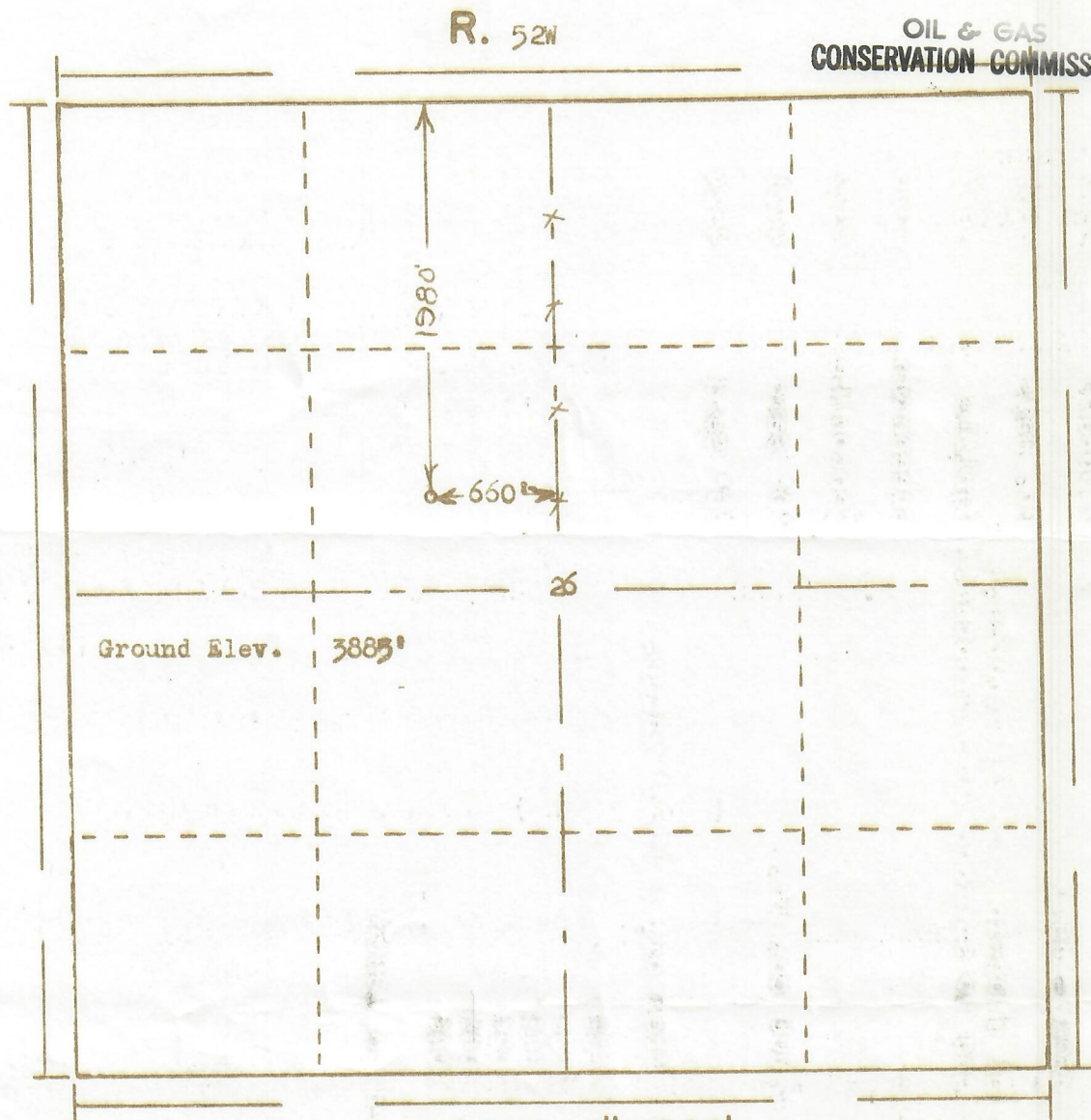
I hereby certify that this plat is an
accurate representation of a correct
survey showing the location of

Date: 2-4-66

Bee L. Hollman
Licensed Land Surveyor No. 2853
State of Colorado

RECEIVED
FEB - 9 1966

OIL & GAS
CONSERVATION COMMISSION



Scale ... 1" = 1000'

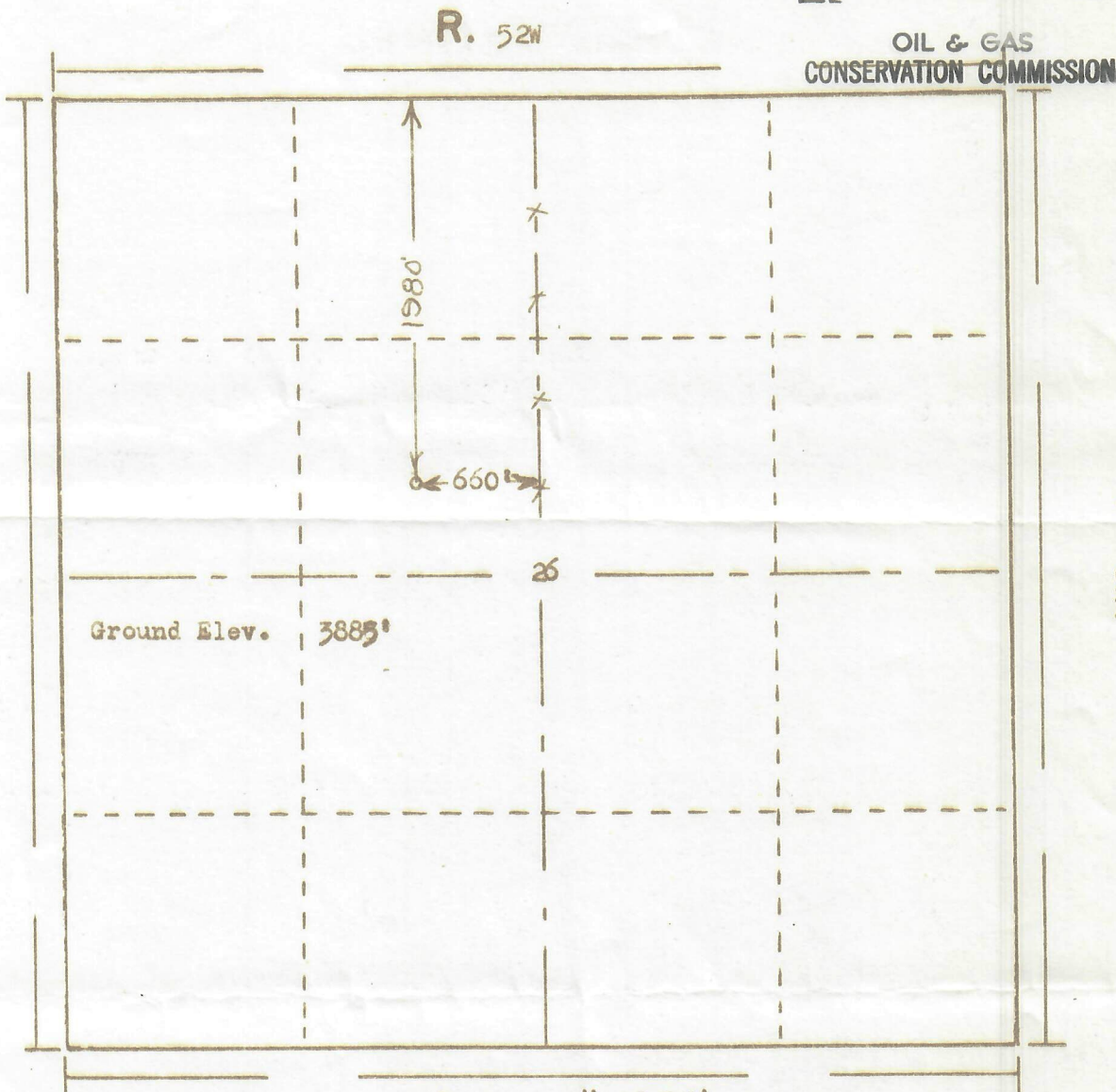
Powers Surveyors, Inc. of Denver, Colorado
has in accordance with a request from Mr. Thurmond
for B.F. Allison estate determined the
Location of No. 2 Giacomini
to be CSE NW Section 26 Township 9N
Range 52W of the 6th Principal Meridian
Logan County, Colorado

I hereby certify that this plat is an
accurate representation of a correct
survey showing the location of

Date: 2-4-66

Bess L. Holloman
Licensed Land Surveyor No. 2853
State of Colorado

RECEIVED
FEB - 9 1966



Scale ... 1" = 1000'

Powers Surveyors, Inc. of Denver, Colorado
has in accordance with a request from Mr. Thurmond
for B.F. Allison estate determined the
Location of No. 2 Giacomini
to be CSE NW Section 26 Township 9N
Range 52W of the 6th Principal Meridian
Logan County, Colorado

I hereby certify that this plat is an
accurate representation of a correct
survey showing the location of

Date: 2-4-66

Bess L. Hollman
Licensed Land Surveyor No. 2853
State of Colorado