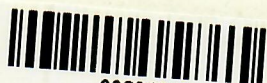




Form PS-10

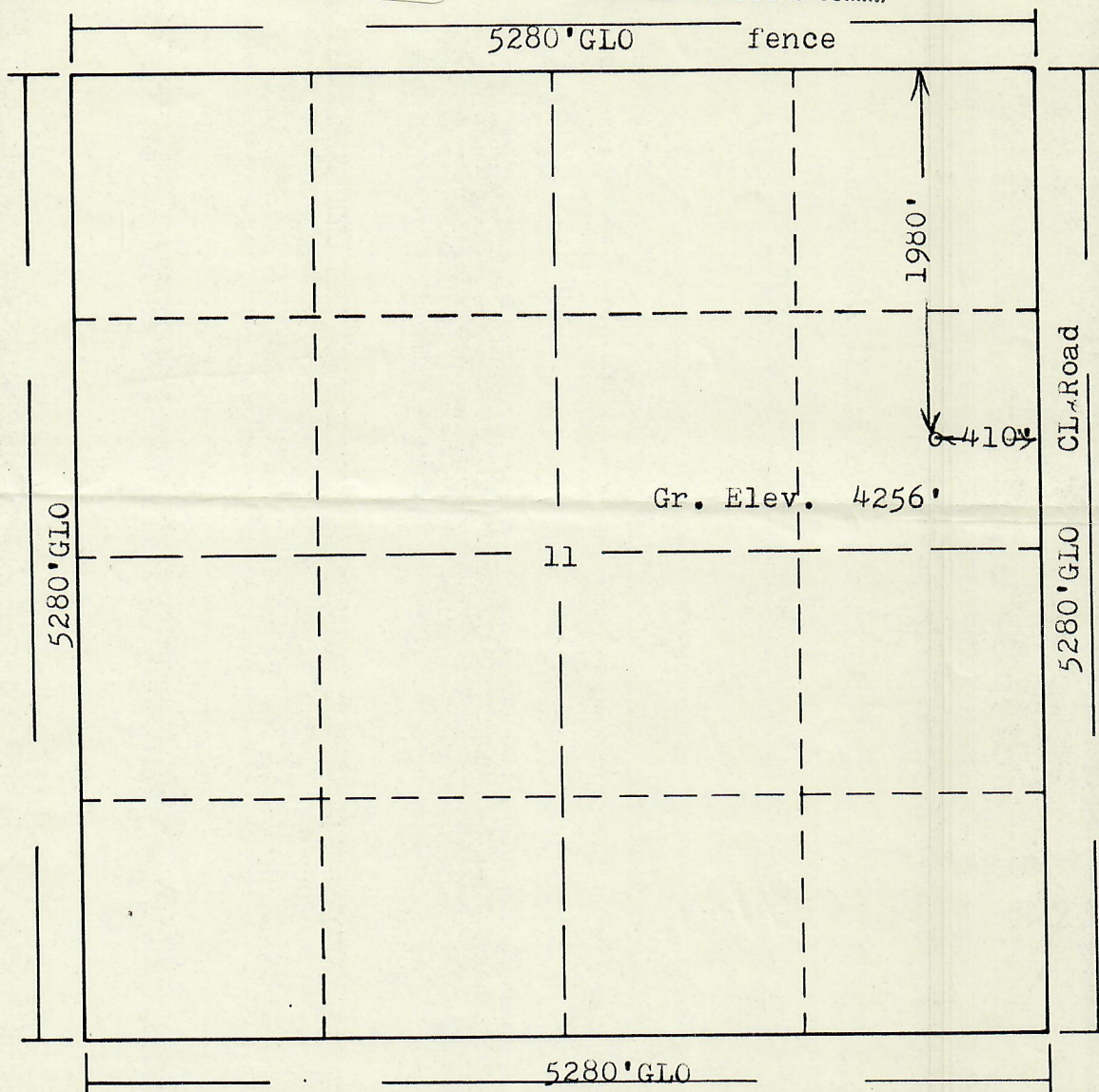


R. 54W

DEC 3 1985

State

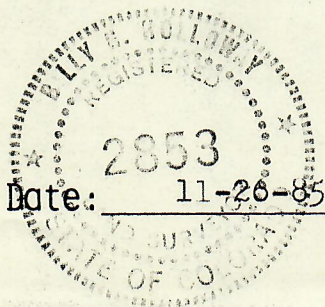
COLO. OIL & GAS CONS. COMM.

T.
9
N

Scale: 1"=1000'

Powers Elevation of Denver, Colorado has in accordance with a request from "r. Gear for Intermountain Petroleum Co. determined the location of No.1 Walters to be 250' East of CSE NE Section 11, Township 9N Range 54W of the 6th Principal Meridian, Logan County, Colorado

I hereby certify that this plat is an accurate representation of a correct survey showing the location of



Date: 11-26-85

Billy B. Hollaway
Licensed Land Surveyor No. 2853
State of Colorado