

COMPENSATED DENSITY/NEUTRON LOG

Company	KUENZLER & FLORA RESERVE COMPANY		
Well	BAUGHMAN #2		
Field	SHERIDAN LAKE		
County	KIOWA	State	COLORADO
Location:	API # : 05-061-06891-0000		Other Services DIL
605' FSL & 2106' FWL			
County	KIOWA	State	COLORADO
Permanent Datum	SEC 32 TWP 18S. RGE 44W		
Log Measured From	GROUND LEVEL	Elevation	4404
Drilling Measured From	KELLY BUSHING	K.B. 4049 D.F. 4047 G.L. 4044	
Date	7/16/19		
Run Number	ONE		
Depth Driller	4180		
Depth Logger	4178		
Bottom Logged Interval	4154		
Top Log Interval	3600		
Casing Driller	8 5/8" @ 346'		
Casing Logger	346'		
Bit Size	7 7/8		
Type Fluid in Hole	CHEMICAL MUD	CHLORIDES	3600 PPM
Density / Viscosity	8.9/57		
pH / Fluid Loss	11.5/7.2		
Source of Sample	FLOWLINE		
Rm @ Meas. Temp	.75 @ 90F		
Rmf @ Meas. Temp	.56 @ 90F		
Rmc @ Meas. Temp	.90 @ 90F		
Source of Rmf / Rmc	MEASUREMENT		
Rm @ BHT	.57 @ 118F		
Time Circulation Stopped	2 HOURS		
Time Logger on Bottom	////		
Maximum Recorded Temperature	118F		
Equipment Number	3802		
Location	HAYS, KANSAS		
Recorded By	JASON CAPPELLUCCI		
Witnessed By	JAKE FLORA	ZANE KUENZLER	

<<< Fold Here >>>

All interpretations are opinions based on inferences from electrical or other measurements and we cannot and do not guarantee the accuracy or correctness of any interpretation, and we shall not, except in the case of gross or willful negligence on our part, be liable or responsible for any loss, costs, damages, or expenses incurred or sustained by anyone resulting from any interpretation made by any of our officers, agents or employees. These interpretations are also subject to our general terms and conditions set out in our current Price Schedule.

Comments

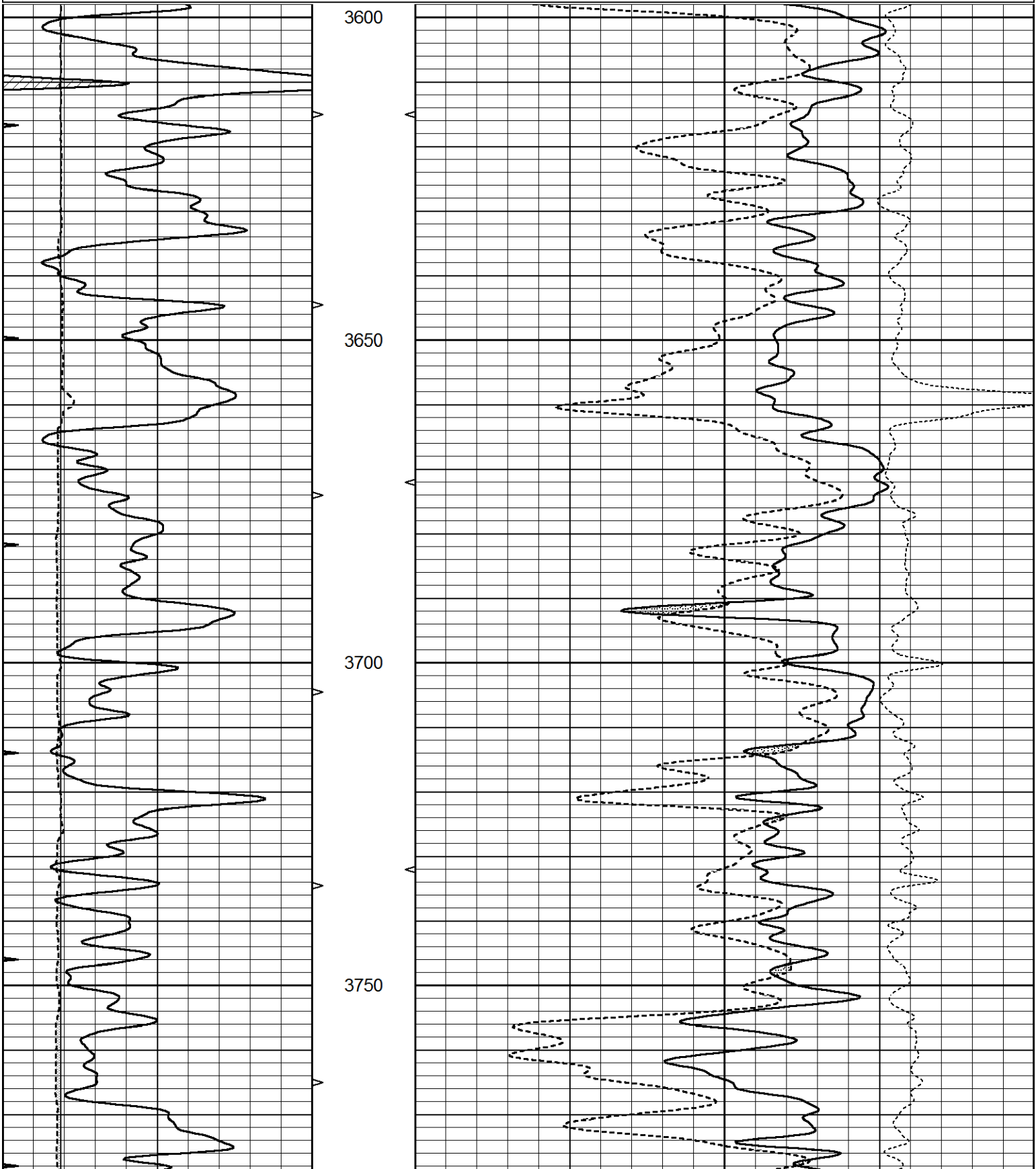
THANK YOU FOR USING ELI WIRELINE SERVICES, HAYS, KS. (785) 628-6395
DIRECTIONS
SHERIDAN LAKE, CO. - 5 MILES WEST TO MM 189 - 1 SOUTH - 1/2 EAST & NORTH INTO

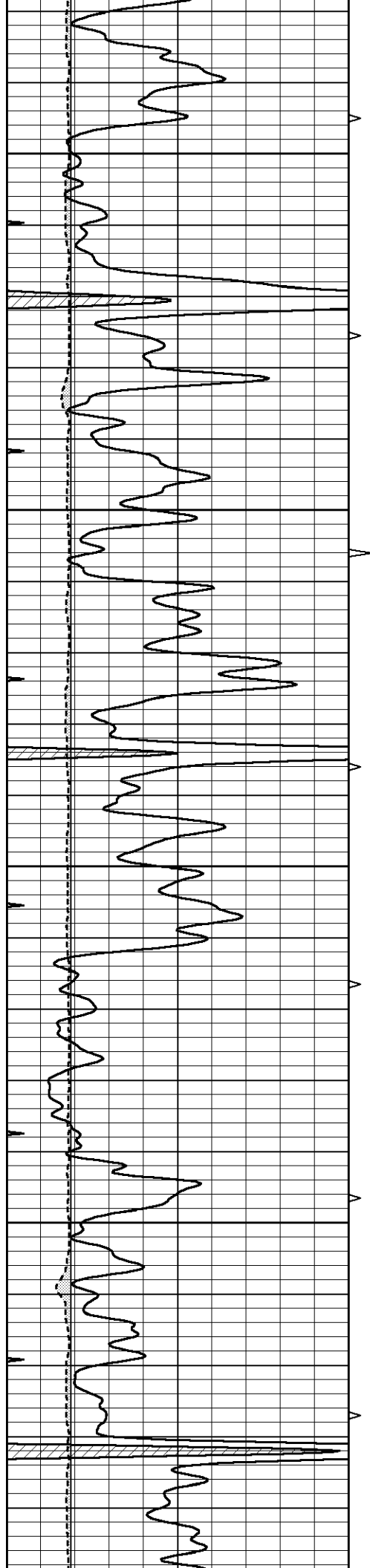


MAIN SECTION

Database File	3977ddn8.db
Dataset Pathname	pass3.1
Presentation Format	_den_neu
Dataset Creation	Tue Jul 16 01:29:45 2019
Charted by	Depth in Feet scaled 1:240

0	GAMMA RAY (GAPI)	150	AVTX	30	COMPENSATED DENSITY (pu)	-10
0	MINMK	20	10 (ft3) 0	30	COMPENSATED NEUTRON (pu)	-10
6	CALIPER (in)	16	BVTX		-0.25 CORRECTION (g/cc)	0.25
			0 (ft3) 10			



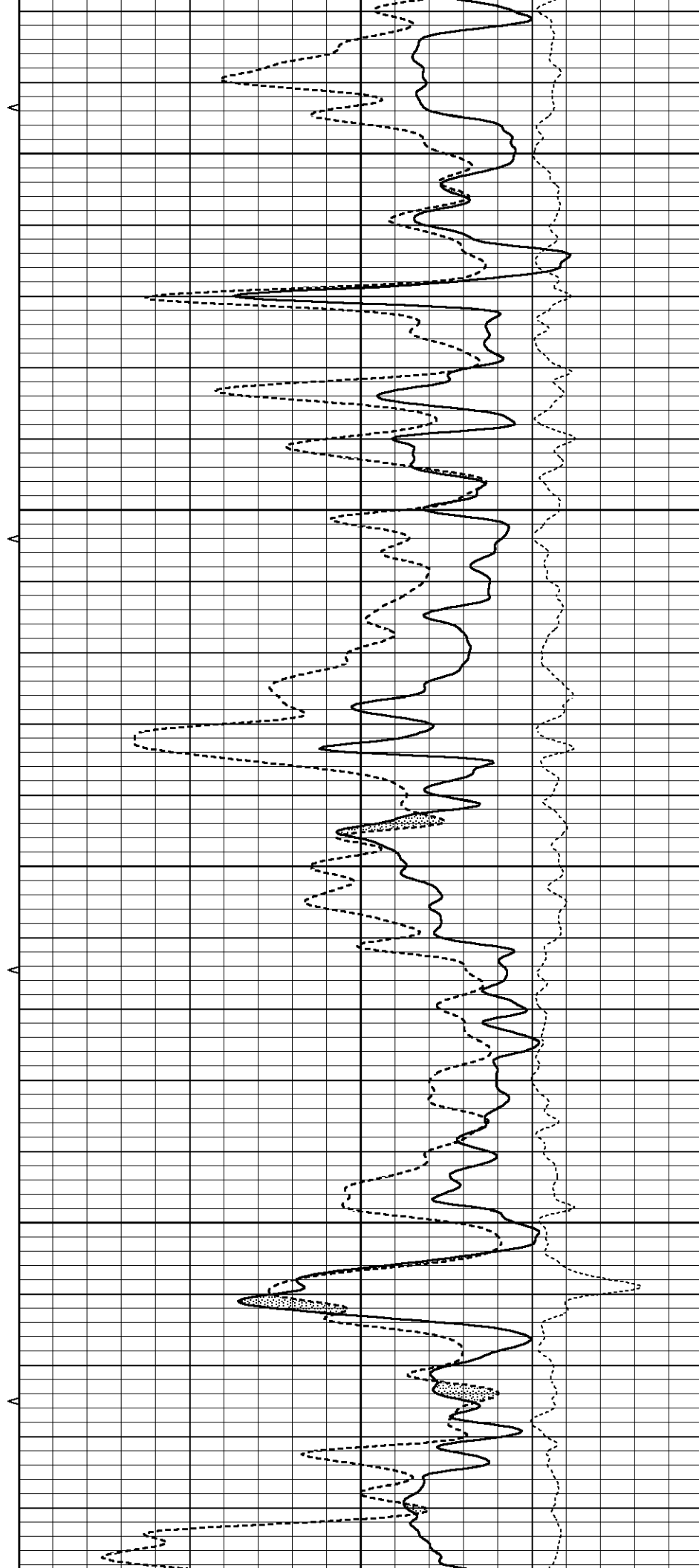


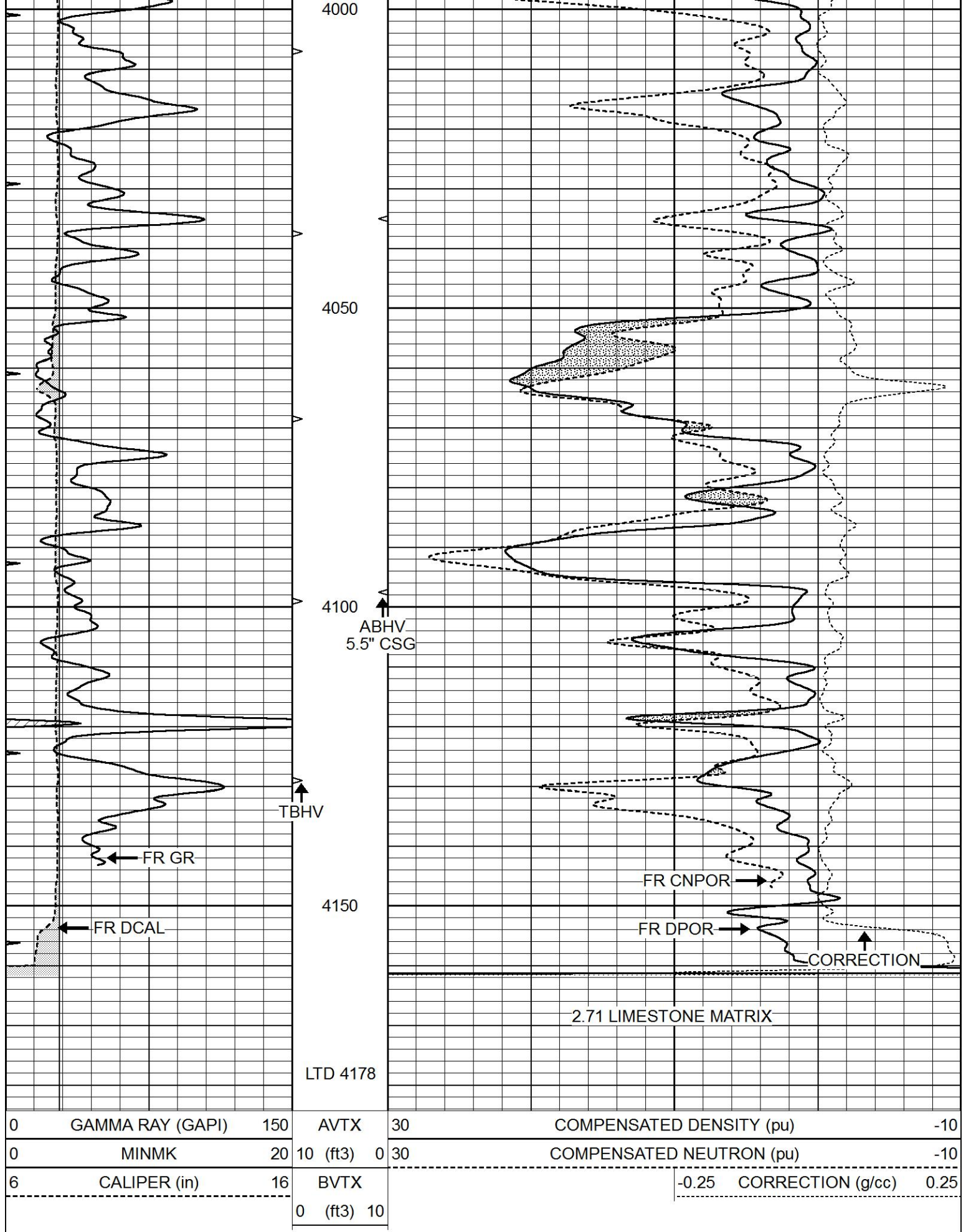
3800

3850

3900

3950





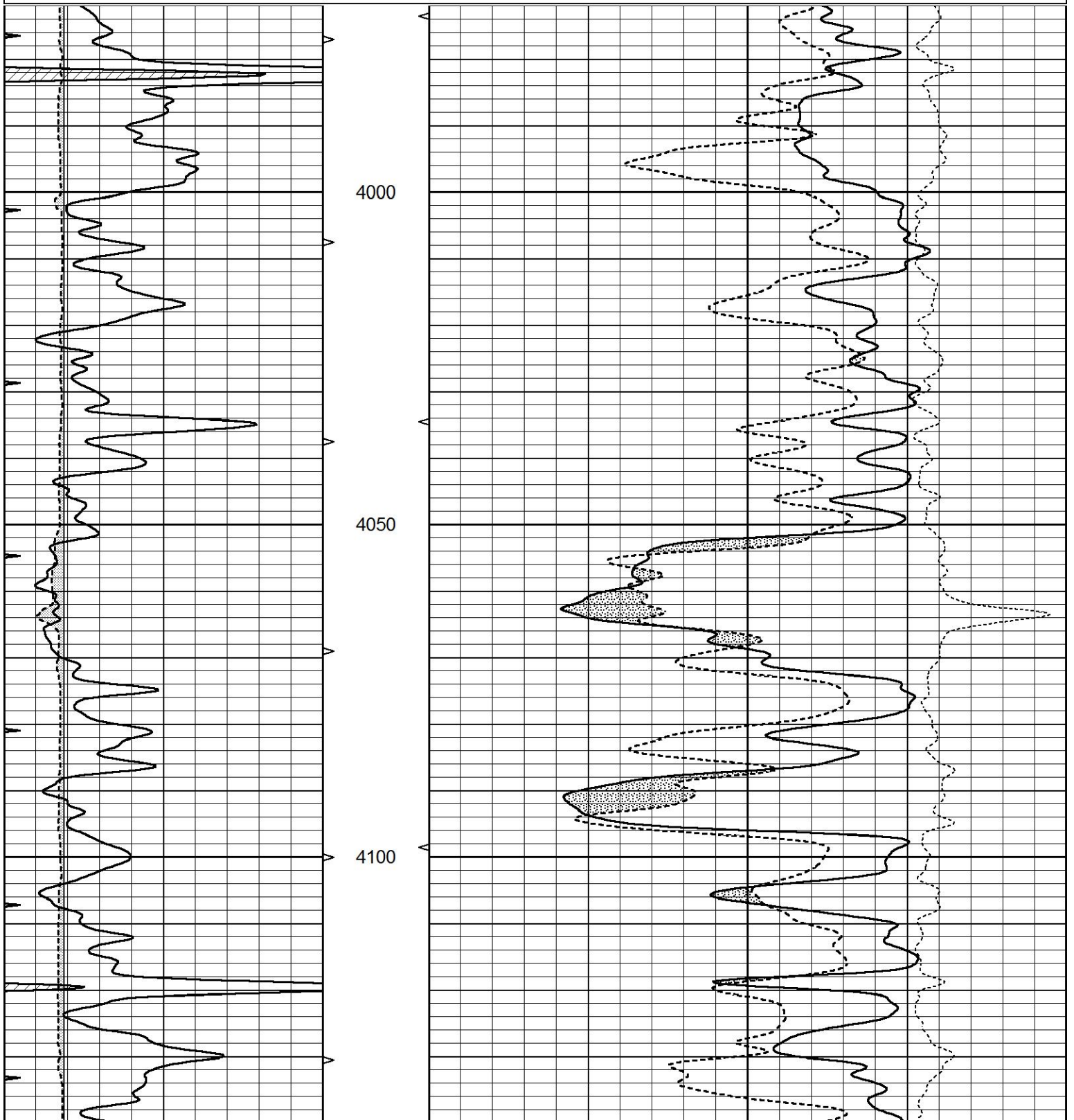
REPEAT SECTION

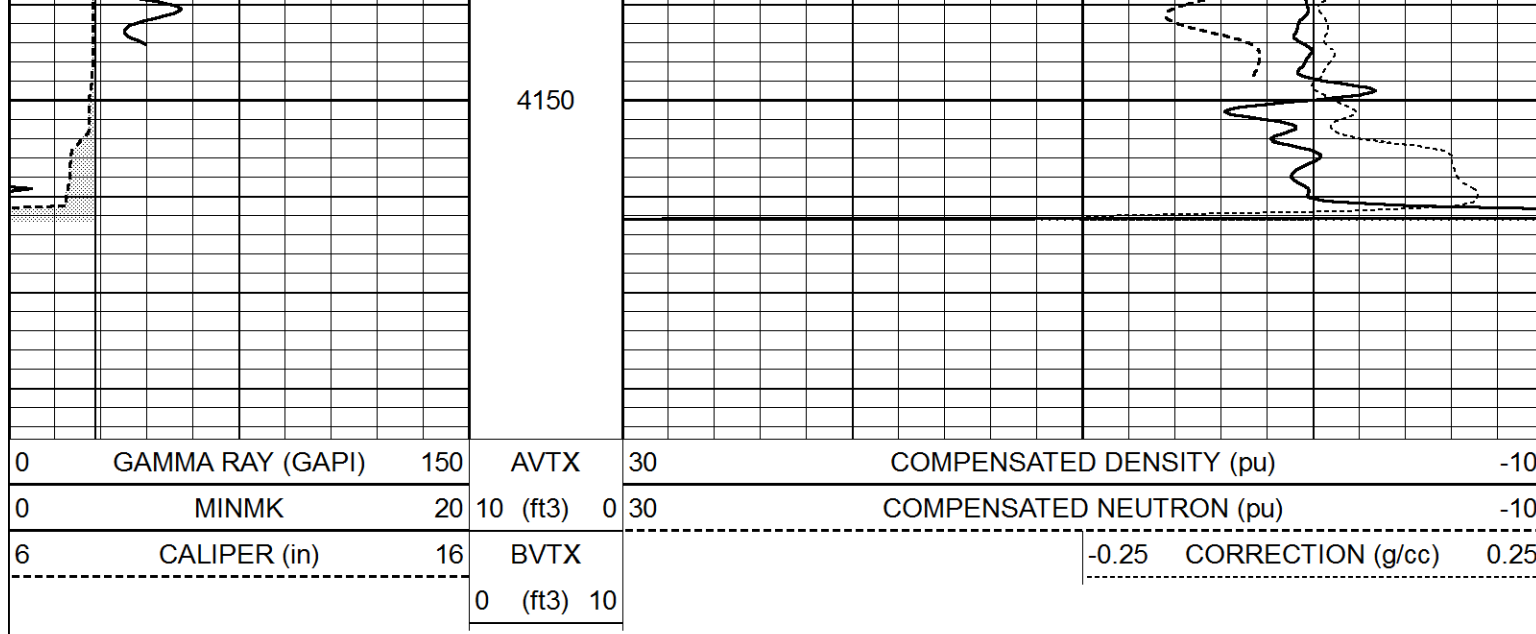


REPEAT SECTION

Database File 3977ddn8.db
Dataset Pathname pass2.1
Presentation Format _den_neu
Dataset Creation Tue Jul 16 01:29:14 2019
Charted by Depth in Feet scaled 1:240

0	GAMMA RAY (GAPI)	150	AVTX	30	COMPENSATED DENSITY (pu)	-10
0	MINMK	20	10 (ft3) 0	30	COMPENSATED NEUTRON (pu)	-10
6	CALIPER (in)	16	BVTX		-0.25 CORRECTION (g/cc)	0.25
			0 (ft3) 10			





Calibration Report		
Database File	3977ddn8.db	
Dataset Pathname	pass2.1	
Dataset Creation	Tue Jul 16 01:29:14 2019	

Dual Induction Calibration Report

Serial-Model:	FW1410-55-Probe
Surface Cal Performed:	Tue Feb 19 11:44:18 2019
Downhole Cal Performed:	Tue Feb 19 11:44:24 2019
After Survey Verification Performed:	Tue Feb 19 11:44:27 2019

Surface Calibration								
Readings				References			Results	
Loop:	Air	Loop		Air	Loop		m	b
Deep	0.011	0.656	V	1.000	400.000	mmho/m	618.595	-5.524
Medium	-0.000	0.731	V	1.000	464.000	mmho/m	632.856	1.197
Internal:	Zero	Cal		Zero	Cal		m	b
Deep	0.007	0.649	V	0.000	400.000	mmho/m	623.784	-4.595
Medium	0.004	0.743	V	0.000	464.000	mmho/m	627.284	-2.251

Downhole Calibration								
Readings				References			Results	
	Zero	Cal		Zero	Cal		m'	b'
Deep	-0.824	395.917	mmho/m	-0.976	397.550	mmho/m	1.004	-0.149
Medium	3.565	471.327	mmho/m	3.468	471.590	mmho/m	1.001	-0.099
LL3		7.503	V		1500.000	Ohm-m		
		0.001	V		20.000	Ohm-m		
		-7.481	V		3745.000	mmho-m		

After Survey Verification								
Readings				Targets			Results	
	Zero	Cal		Zero	Cal		m'	b'
Deep	0.000	0.000	mmho/m	-0.824	395.917	mmho/m	1.000	0.000
Medium	0.000	0.000	mmho/m	3.565	471.327	mmho/m	1.000	0.000
LL3		0.000	Ohm-m		1500.000	Ohm-m		
		0.000	Ohm-m		20.000	Ohm-m		
		0.000	mmho-m		3745.000	mmho-m		

Compensated Neutron Calibration Report			
Serial Number:		080621PMC	
Tool Model:		NABORS	
PRE-SURVEY VERIFICATION			
Detector	Readings	Measured	Target
Short Space	cps		
Long Space	cps	pu	pu
POST-SURVEY VERIFICATION			
Detector	Readings	Measured	Target
Short Space	cps		
Long Space	cps	pu	pu
Gamma Ray Calibration Report			
Serial Number:	7		
Tool Model:	Probe1		
Performed:	Tue Feb 19 11:45:10 2019		
Calibrator Value:	1.0	GAPI	
Background Reading:	0.0	cps	
Calibrator Reading:	1.0	cps	
Sensitivity:	0.4300	GAPI/cps	