

T4S, R65W, 6th P.M.

ConocoPhillips Company

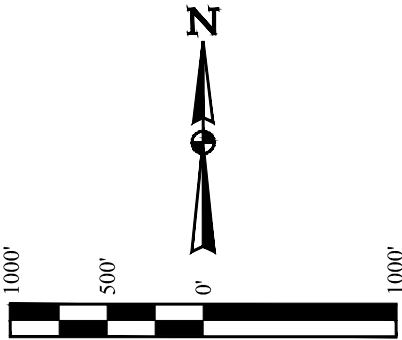
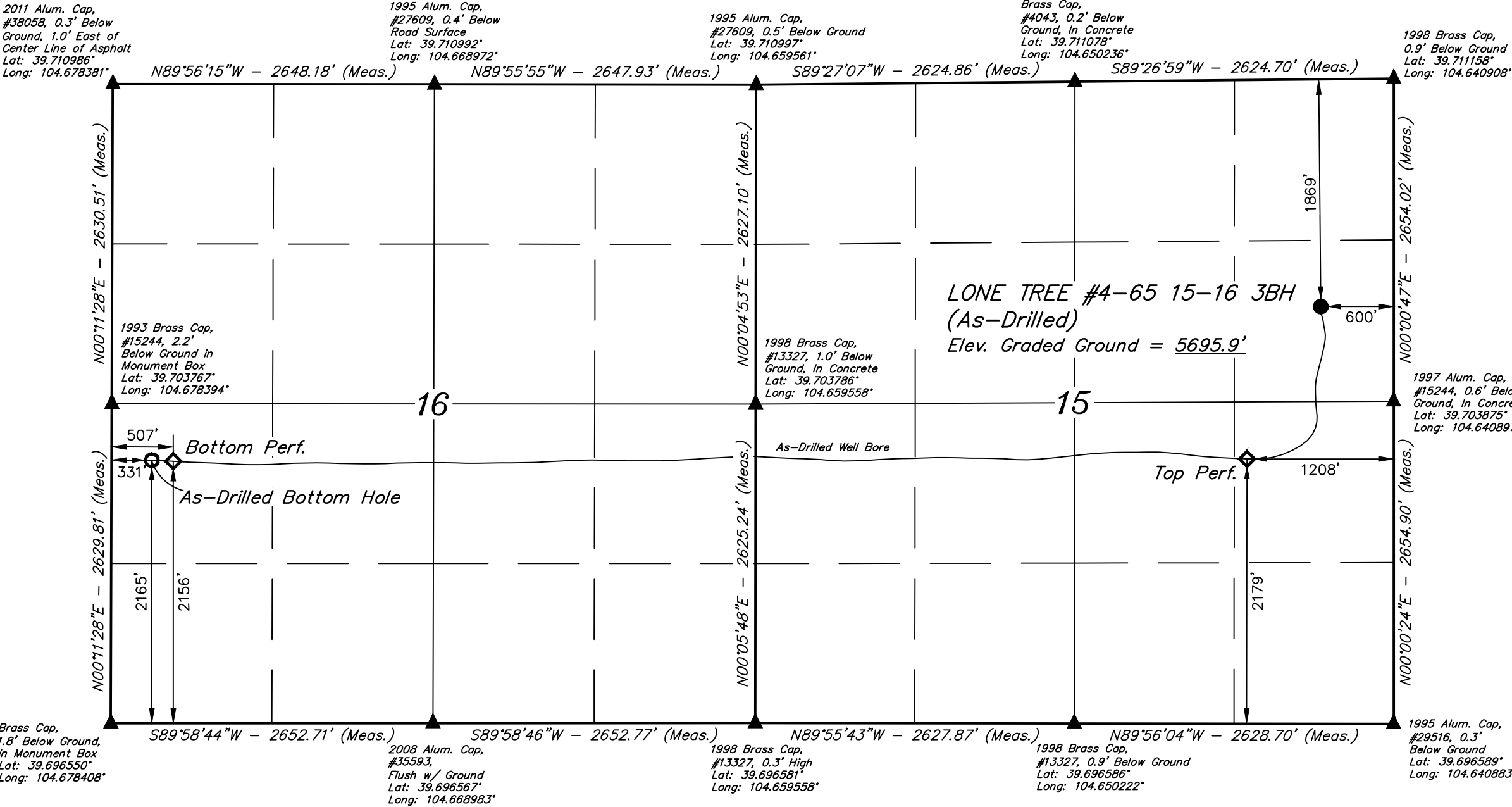
LONE TREE #4-65 15-16 3BH (AS-DRILLED)  
SE 1/4 NE 1/4, SECTION 15, T4S, R65W, 6th P.M.  
ARAPAHOE COUNTY, COLORADO

BASIS OF BEARINGS

BASIS OF BEARINGS IS A G.P.S. OBSERVATION

BASIS OF ELEVATION

BENCHMARK 374 LOCATED ON THE SECTION LINE BETWEEN  
SECTIONS 12 & 13, T5S, R64W, 6th. P.M., TAKEN FROM 1988  
PUBLISHED DATUM BY THE UNITED STATES DEPARTMENT OF  
THE INTERIOR, GEOLOGICAL SURVEY AS BEING 6054.61 FEET.



NOTE:  
Distances referenced  
on plat to section lines  
are perpendicular.

LEGEND:  
● = AS-DRILLED WELLHEAD.  
◆ = PERF. POINTS.  
○ = AS-DRILLED BOTTOM HOLE.  
▲ = SECTION CORNERS LOCATED.

PDOP = 1.5

NAD 83 (AS-DRILLED SURFACE LOCATION)	NAD 83 (TOP PERF.)	NAD 83 (BOTTOM PERF.)	NAD 83 (AS-DRILLED BOTTOM HOLE)
LATITUDE = 39°42'21.63" (39.706009) LONGITUDE = 104°38'34.92" (104.643033)	LATITUDE = 39°42'09.24" (39.702566) LONGITUDE = 104°38'42.68" (104.645188)	LATITUDE = 39°42'08.89" (39.702470) LONGITUDE = 104°40'35.74" (104.676594)	LATITUDE = 39°42'08.97" (39.702492) LONGITUDE = 104°40'38.00" (104.677222)
NAD 27 (AS-DRILLED SURFACE LOCATION)	NAD 27 (TOP PERF.)	NAD 27 (BOTTOM PERF.)	NAD 27 (AS-DRILLED BOTTOM HOLE)
LATITUDE = 39°42'21.68" (39.706022) LONGITUDE = 104°38'33.03" (104.642509)	LATITUDE = 39°42'09.28" (39.702579) LONGITUDE = 104°38'40.79" (104.644664)	LATITUDE = 39°42'08.94" (39.702482) LONGITUDE = 104°40'33.85" (104.676069)	LATITUDE = 39°42'09.02" (39.702505) LONGITUDE = 104°40'36.11" (104.676697)
STATE PLANE NAD 83 (CO. CEN.)	STATE PLANE NAD 83 (CO. CEN.)	STATE PLANE NAD 83 (CO. CEN.)	STATE PLANE NAD 83 (CO. CEN.)
N: 1683180.34 E: 3241111.43	N: 1681920.43 E: 3240516.81	N: 1681803.66 E: 3231680.77	N: 1681810.31 E: 3231503.96
STATE PLANE NAD 27 (CO. CEN.)	STATE PLANE NAD 27 (CO. CEN.)	STATE PLANE NAD 27 (CO. CEN.)	STATE PLANE NAD 27 (CO. CEN.)
N: 683172.76 E: 2241265.07	N: 681912.86 E: 2240670.48	N: 681795.95 E: 2231834.52	N: 681802.60 E: 2231657.71

CERTIFICATE

THIS IS TO CERTIFY THAT THE ABOVE PLAT WAS PREPARED FROM FIELD  
NOTES OF ACTUAL SURVEYS MADE BY ME OR UNDER MY SUPERVISION  
AND THAT THE SAME ARE TRUE AND CORRECT TO THE BEST OF MY  
KNOWLEDGE AND BELIEF.

CHAD MEIERS  
REGISTERED LAND SURVEYOR  
REGISTRATION NO. 28285  
STATE OF COLORADO  
2019

UINTEAH  
ENGINEERING & LAND SURVEYING

UELS, LLC  
Corporate Office \* 85 South 200 East  
Vernal, UT 84078 \* (435) 789-1017

SURVEYED BY	CHAD MEIERS	06-27-18	SCALE
DRAWN BY	S.F.	10-29-19	1" = 1000'

AS-DRILLED WELL LOCATION PLAT