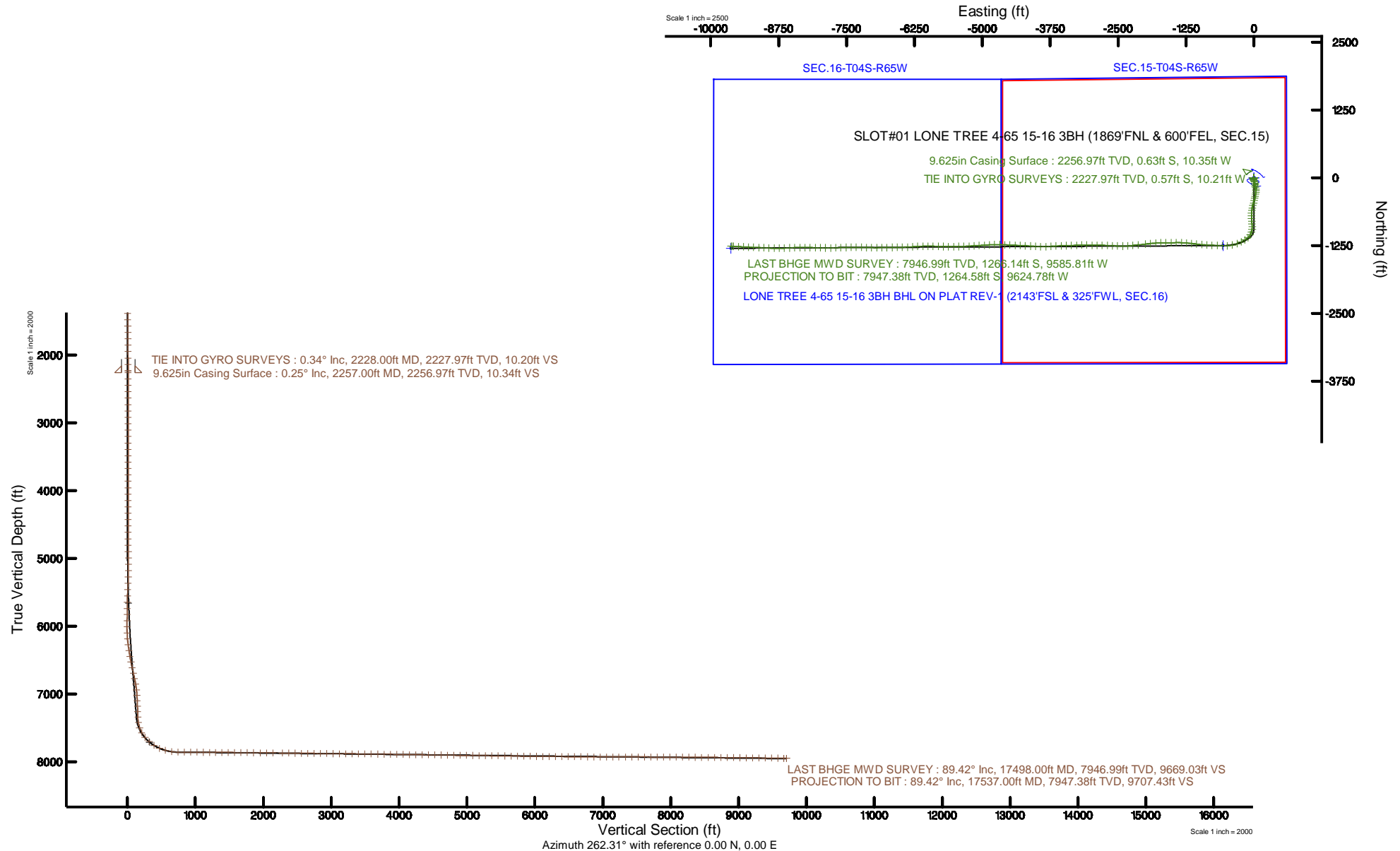


Burlington Resources

Location: COLORADO Slot: SLOT#01 LONE TREE 4-65 15-16 3BH (1869'FNL & 600'FEL, SEC.15)
Field: ARAPAHOE COUNTY (NAD83/TN) Well: LONE TREE 4-65 15-16 3BH
Facility: SEC.15-T04S-R65W Wellbore: LONE TREE 4-65 15-16 3BH PWB

Plot reference wellpath is LONE TREE 4-65 15-16 3BH (REV-B.0) PWP	Grid System: NAD83 / Lambert Colorado SP, Central Zone (502), US feet
True vertical depths are referenced to NABORS B16 (25KB) (RKB)	North Reference: True north
Measured depths are referenced to NABORS B16 (25KB) (RKB)	Scale: True distance
NABORS B16 (25KB) (RKB) to Mean Sea Level: 5718 feet	Depths are in feet
Mean Sea Level to Mud line (At Slot: SLOT#01 LONE TREE 4-65 15-16 3BH (1869'FNL & 600'FEL, SEC.15)): 0 feet	Created by: benajaci on 2018-06-13
Coordinates are in feet referenced to Slot	Database: WA_DEN_Denver_Delhi

BURLINGTON
RESOURCES



REFERENCE WELLPATH IDENTIFICATION

Operator	Burlington Resources	Slot	SLOT#01 LONE TREE 4-65 15-16 3BH (1869'FNL & 600'FEL, SEC.15)
Area	COLORADO	Well	LONE TREE 4-65 15-16 3BH
Field	ARAPAHOE COUNTY (NAD83/TN)	Wellbore	LONE TREE 4-65 15-16 3BH AWP
Facility	SEC.15-T04S-R65W		

REPORT SETUP INFORMATION

Projection System	NAD83 / Lambert Colorado SP, Central Zone (502), US feet	Software System	WellArchitect® 5.1
North Reference	True	User	Bensjacj
Scale	0.999992	Report Generated	06/13/2018 at 11:20 AM
Convergence at slot	0.54° East	Database/Source file	WA_DEN_Denver_Defn/LONE_TREE_4-65_15-16_3BH_AWP.xml

WELLPATH LOCATION

	Local coordinates		Grid coordinates		Geographic coordinates	
	North[ft]	East[ft]	Easting[US ft]	Northing[US ft]	Latitude	Longitude
Slot Location	0.00	0.00	3241111.22	1683179.96	39°42'21.630"N	104°38'34.920"W
Facility Reference Pt			3241111.22	1683179.96	39°42'21.630"N	104°38'34.920"W
Field Reference Pt			3256721.09	1679994.75	39°41'48.650"N	104°35'15.610"W

WELLPATH DATUM

Calculation method	Minimum curvature	NABORS B16 (25'KB) (RKB) to Facility Vertical Datum	5718.00ft
Horizontal Reference Pt	Slot	NABORS B16 (25'KB) (RKB) to Mean Sea Level	5718.00ft
Vertical Reference Pt	NABORS B16 (25'KB) (RKB)	NABORS B16 (25'KB) (RKB) to Mud Line at Slot (SLOT#01 LONE TREE 4-65 15-16 3BH (1869'FNL & 600'FEL, SEC.15))	5718.00ft
MD Reference Pt	NABORS B16 (25'KB) (RKB)	Section Origin	N 0.00, E 0.00 ft
Field Vertical Reference	Mean Sea Level	Section Azimuth	262.31°

REFERENCE WELLPATH IDENTIFICATION			
Operator	Burlington Resources	Slot	SLOT#01 LONE TREE 4-65 15-16 3BH (1869'FNL & 600'FEL, SEC.15)
Area	COLORADO	Well	LONE TREE 4-65 15-16 3BH
Field	ARAPAHOE COUNTY (NAD83/TN)	Wellbore	LONE TREE 4-65 15-16 3BH AWP
Facility	SEC.15-T04S-R65W		

WELLPATH DATA (163 stations)

MD [ft]	Inclination [°]	Azimuth [°]	TVD [ft]	Vert Sect [ft]	North [ft]	East [ft]	DLS [°/100ft]	Comments
2228.00	0.340	248.250	2227.97	10.20	-0.57	-10.21	0.02	TIE INTO GYRO SURVEYS
2351.00	0.030	88.100	2350.97	10.52	-0.71	-10.52	0.30	
2446.00	0.070	55.720	2445.97	10.44	-0.67	-10.45	0.05	
2540.00	0.220	137.980	2539.96	10.29	-0.78	-10.28	0.24	
2634.00	0.040	287.840	2633.96	10.22	-0.90	-10.19	0.27	
2728.00	0.110	311.520	2727.96	10.31	-0.83	-10.29	0.08	
2823.00	0.060	30.030	2822.96	10.34	-0.73	-10.33	0.12	
2917.00	0.040	234.110	2916.96	10.33	-0.70	-10.33	0.10	
3012.00	0.030	349.220	3011.96	10.37	-0.70	-10.37	0.06	
3106.00	0.070	296.080	3105.96	10.41	-0.65	-10.42	0.06	
3200.00	0.090	269.910	3199.96	10.54	-0.62	-10.55	0.04	
3295.00	0.170	305.980	3294.96	10.71	-0.54	-10.74	0.12	
3389.00	0.060	55.210	3388.96	10.77	-0.43	-10.81	0.21	
3483.00	0.220	315.210	3482.96	10.83	-0.27	-10.89	0.25	
3577.00	0.150	212.840	3576.96	11.02	-0.25	-11.09	0.31	
3672.00	0.180	181.830	3671.96	11.13	-0.50	-11.16	0.10	
3766.00	0.160	95.550	3765.96	11.02	-0.66	-11.03	0.25	
3860.00	0.090	248.250	3859.96	10.97	-0.70	-10.97	0.26	
3955.00	0.000	98.410	3954.96	11.04	-0.73	-11.04	0.09	
4049.00	0.030	109.560	4048.96	11.02	-0.74	-11.02	0.03	
4143.00	0.040	11.090	4142.96	10.99	-0.72	-10.99	0.06	
4238.00	0.030	51.400	4237.96	10.95	-0.67	-10.96	0.03	
4332.00	0.070	50.950	4331.96	10.88	-0.62	-10.90	0.04	
4426.00	0.030	10.630	4425.96	10.83	-0.56	-10.85	0.05	
4520.00	0.130	35.920	4519.96	10.75	-0.45	-10.78	0.11	
4615.00	0.160	2.630	4614.96	10.65	-0.23	-10.71	0.09	
4709.00	0.770	153.010	4708.96	10.42	-0.66	-10.42	0.97	
4803.00	2.740	185.880	4802.91	10.73	-3.46	-10.37	2.27	
4898.00	3.370	188.230	4897.78	12.03	-8.48	-11.00	0.68	
4992.00	3.760	185.770	4991.60	13.51	-14.28	-11.70	0.45	
5086.00	4.570	176.650	5085.35	14.51	-21.08	-11.79	1.11	
5181.00	5.490	166.830	5179.98	14.36	-29.29	-10.54	1.32	
5276.00	6.070	155.310	5274.50	12.46	-38.28	-7.40	1.36	
5370.00	7.870	154.410	5367.80	9.03	-48.60	-2.55	1.92	
5464.00	10.290	159.500	5460.62	5.19	-62.27	3.17	2.71	
5558.00	12.990	163.550	5552.68	1.72	-80.27	9.11	3.00	
5652.00	14.330	167.400	5644.02	-0.88	-101.75	14.64	1.72	
5747.00	16.440	170.650	5735.61	-2.27	-126.49	19.39	2.40	
5841.00	16.500	169.960	5825.76	-3.21	-152.76	23.87	0.22	
5935.00	17.170	168.450	5915.73	-4.68	-179.50	28.98	0.85	
6030.00	17.370	171.900	6006.45	-5.73	-207.28	33.78	1.10	
6124.00	19.210	179.090	6095.71	-4.00	-236.64	36.01	3.09	
6218.00	21.050	185.420	6183.97	1.66	-268.92	34.66	3.03	
6313.00	22.990	189.700	6272.04	11.08	-304.19	29.92	2.65	
6407.00	24.200	192.200	6358.18	23.12	-341.12	22.76	1.67	

REFERENCE WELLPATH IDENTIFICATION			
Operator	Burlington Resources	Slot	SLOT#01 LONE TREE 4-65 15-16 3BH (1869'FNL & 600'FEL, SEC.15)
Area	COLORADO	Well	LONE TREE 4-65 15-16 3BH
Field	ARAPAHOE COUNTY (NAD83/TN)	Wellbore	LONE TREE 4-65 15-16 3BH AWP
Facility	SEC.15-T04S-R65W		

WELLPATH DATA (163 stations)								
MD [ft]	Inclination [°]	Azimuth [°]	TVD [ft]	Vert Sect [ft]	North [ft]	East [ft]	DLS [°/100ft]	Comments
6501.00	25.390	193.200	6443.52	36.87	-379.57	14.08	1.34	
6596.00	27.860	193.720	6528.44	52.24	-420.97	4.16	2.61	
6691.00	29.530	194.550	6611.77	69.20	-465.20	-6.98	1.81	
6785.00	30.540	194.840	6693.14	87.13	-510.71	-18.92	1.09	
6880.00	30.490	193.120	6774.99	104.94	-557.52	-30.57	0.92	
6974.00	30.640	189.890	6855.93	120.65	-604.34	-40.10	1.75	
7068.00	31.850	183.000	6936.32	132.50	-652.72	-45.51	4.01	
7163.00	31.760	177.240	7017.08	139.30	-702.74	-45.62	3.20	
7257.00	31.850	178.390	7096.96	144.06	-752.24	-43.73	0.65	
7352.00	31.830	175.640	7177.67	148.17	-802.28	-41.12	1.53	
7446.00	31.740	174.520	7257.58	150.57	-851.61	-36.88	0.63	
7541.00	31.640	174.960	7338.41	152.69	-901.30	-32.30	0.27	
7635.00	29.600	188.190	7419.39	160.19	-948.90	-33.45	7.48	
7729.00	36.290	198.110	7498.29	178.69	-998.41	-45.42	9.12	
7823.00	42.510	210.840	7571.01	210.67	-1052.26	-70.42	10.82	
7918.00	46.060	227.140	7639.23	258.80	-1103.27	-112.09	12.52	
8013.00	50.330	239.330	7702.68	320.58	-1145.29	-168.76	10.55	
8107.00	58.860	241.970	7757.09	391.75	-1182.72	-235.51	9.36	
8201.00	66.510	249.760	7800.25	471.76	-1216.63	-311.67	10.97	
8296.00	75.700	257.880	7831.03	560.50	-1241.46	-397.86	12.60	
8391.00	81.570	266.800	7849.77	653.49	-1253.78	-490.04	11.08	
8485.00	89.820	271.910	7856.83	746.40	-1254.81	-583.65	10.31	
8579.00	89.660	273.390	7857.26	838.87	-1250.46	-677.55	1.58	
8674.00	89.480	271.940	7857.97	932.32	-1246.05	-772.44	1.54	
8769.00	89.510	273.590	7858.81	1025.73	-1241.46	-867.32	1.74	
8863.00	89.540	275.480	7859.59	1117.59	-1234.03	-961.02	2.01	
8958.00	89.540	276.890	7860.35	1209.81	-1223.80	-1055.46	1.48	
9051.00	90.030	276.520	7860.70	1299.89	-1212.94	-1147.83	0.66	
9146.00	89.350	274.500	7861.21	1392.37	-1203.82	-1242.38	2.24	
9240.00	89.320	272.370	7862.30	1484.59	-1198.19	-1336.20	2.27	
9335.00	89.420	268.370	7863.35	1578.63	-1197.57	-1431.17	4.21	
9429.00	89.510	269.380	7864.22	1672.01	-1199.42	-1525.15	1.08	
9524.00	89.380	270.220	7865.14	1766.19	-1199.75	-1620.14	0.89	
9618.00	89.570	268.020	7866.01	1859.52	-1201.19	-1714.12	2.35	
9713.00	89.290	266.240	7866.95	1954.17	-1205.95	-1808.99	1.90	
9807.00	89.320	264.700	7868.09	2048.02	-1213.37	-1902.69	1.64	
9901.00	89.480	263.500	7869.08	2141.96	-1223.04	-1996.19	1.29	
10039.00	89.200	263.920	7870.67	2279.91	-1238.15	-2133.35	0.37	
10134.00	89.290	263.740	7871.92	2374.87	-1248.36	-2227.79	0.21	
10229.00	89.320	266.080	7873.07	2469.76	-1256.79	-2322.40	2.46	
10323.00	89.230	269.210	7874.26	2563.33	-1260.65	-2416.30	3.33	
10417.00	89.450	273.130	7875.34	2656.19	-1258.73	-2510.26	4.18	
10512.00	89.260	273.340	7876.41	2749.46	-1253.37	-2605.10	0.30	
10606.00	89.350	271.810	7877.55	2841.94	-1249.15	-2698.99	1.63	
10700.00	89.290	270.020	7878.67	2934.87	-1247.65	-2792.97	1.91	



REFERENCE WELLPATH IDENTIFICATION			
Operator	Burlington Resources	Slot	SLOT#01 LONE TREE 4-65 15-16 3BH (1869'FNL & 600'FEL, SEC.15)
Area	COLORADO	Well	LONE TREE 4-65 15-16 3BH
Field	ARAPAHOE COUNTY (NAD83/TN)	Wellbore	LONE TREE 4-65 15-16 3BH AWP
Facility	SEC.15-T04S-R65W		

WELLPATH DATA (163 stations)								
MD [ft]	Inclination [°]	Azimuth [°]	TVD [ft]	Vert Sect [ft]	North [ft]	East [ft]	DLS [°/100ft]	Comments
10795.00	89.510	270.750	7879.66	3028.92	-1247.01	-2887.96	0.80	
10889.00	89.510	271.680	7880.47	3121.78	-1245.02	-2981.94	0.99	
10984.00	89.320	271.110	7881.44	3215.59	-1242.71	-3076.90	0.63	
11078.00	89.450	268.440	7882.45	3308.78	-1243.07	-3170.89	2.84	
11173.00	89.380	267.560	7883.42	3403.30	-1246.39	-3265.83	0.93	
11267.00	89.380	269.200	7884.43	3496.76	-1249.05	-3359.78	1.74	
11361.00	89.260	267.610	7885.55	3590.22	-1251.66	-3453.73	1.70	
11456.00	89.170	268.210	7886.85	3684.76	-1255.13	-3548.66	0.64	
11550.00	89.350	266.410	7888.06	3778.39	-1259.54	-3642.55	1.92	
11644.00	89.110	266.380	7889.33	3872.14	-1265.45	-3736.35	0.26	
11739.00	89.110	268.210	7890.80	3966.77	-1269.93	-3831.23	1.93	
11833.00	89.140	270.670	7892.24	4060.02	-1270.85	-3925.21	2.62	
11928.00	89.170	273.770	7893.64	4153.58	-1267.17	-4020.11	3.26	
12022.00	89.200	274.860	7894.98	4245.51	-1260.10	-4113.84	1.16	
12117.00	89.260	272.480	7896.25	4338.63	-1254.02	-4208.63	2.51	
12211.00	89.200	271.780	7897.52	4431.25	-1250.53	-4302.55	0.75	
12305.00	89.230	272.640	7898.81	4523.84	-1246.90	-4396.47	0.92	
12400.00	89.200	272.720	7900.11	4617.27	-1242.46	-4491.36	0.09	
12494.00	89.200	273.370	7901.42	4709.62	-1237.47	-4585.22	0.69	
12589.00	89.170	271.880	7902.77	4803.07	-1233.12	-4680.11	1.57	
12683.00	89.260	267.380	7904.06	4896.27	-1233.72	-4774.07	4.79	
12778.00	89.260	266.190	7905.29	4990.97	-1239.05	-4868.91	1.25	
12872.00	89.170	267.160	7906.57	5084.69	-1244.50	-4962.74	1.04	
12967.00	89.320	266.470	7907.83	5179.38	-1249.78	-5057.59	0.74	
13061.00	89.230	265.980	7909.02	5273.16	-1255.97	-5151.38	0.53	
13156.00	89.140	267.020	7910.37	5367.89	-1261.77	-5246.19	1.10	
13250.00	89.140	267.910	7911.78	5461.50	-1265.92	-5340.09	0.95	
13345.00	89.200	268.850	7913.15	5555.95	-1268.61	-5435.04	0.99	
13439.00	89.140	269.710	7914.52	5649.25	-1269.79	-5529.02	0.92	
13533.00	89.170	270.130	7915.90	5742.41	-1269.92	-5623.01	0.45	
13628.00	89.170	271.230	7917.28	5836.38	-1268.79	-5717.99	1.16	
13723.00	89.230	271.600	7918.60	5930.18	-1266.45	-5812.95	0.39	
13817.00	89.230	271.310	7919.87	6022.97	-1264.06	-5906.91	0.31	
13912.00	89.660	269.990	7920.79	6116.96	-1262.98	-6001.90	1.46	
14006.00	89.320	268.260	7921.62	6210.29	-1264.42	-6095.88	1.88	
14100.00	89.660	267.340	7922.46	6303.85	-1268.03	-6189.81	1.04	
14195.00	89.660	266.550	7923.03	6398.54	-1273.09	-6284.67	0.83	
14289.00	89.480	267.190	7923.73	6492.24	-1278.22	-6378.53	0.71	
14383.00	89.540	268.190	7924.53	6585.82	-1282.01	-6472.44	1.07	
14477.00	89.480	268.800	7925.34	6679.26	-1284.48	-6566.41	0.65	
14572.00	89.480	269.810	7926.20	6773.55	-1285.63	-6661.40	1.06	
14666.00	89.600	269.540	7926.96	6866.77	-1286.17	-6755.39	0.31	
14760.00	89.820	268.340	7927.43	6960.14	-1287.91	-6849.37	1.30	
14854.00	89.820	269.310	7927.73	7053.53	-1289.83	-6943.35	1.03	
14948.00	89.820	271.780	7928.02	7146.55	-1288.94	-7037.34	2.63	

REFERENCE WELLPATH IDENTIFICATION			
Operator	Burlington Resources	Slot	SLOT#01 LONE TREE 4-65 15-16 3BH (1869'FNL & 600'FEL, SEC.15)
Area	COLORADO	Well	LONE TREE 4-65 15-16 3BH
Field	ARAPAHOE COUNTY (NAD83/TN)	Wellbore	LONE TREE 4-65 15-16 3BH AWP
Facility	SEC.15-T04S-R65W		

WELLPATH DATA (163 stations)								
MD [ft]	Inclination [°]	Azimuth [°]	TVD [ft]	Vert Sect [ft]	North [ft]	East [ft]	DLS [°/100ft]	Comments
15042.00	89.850	271.130	7928.29	7239.36	-1286.55	-7131.31	0.69	
15137.00	89.850	271.050	7928.54	7333.24	-1284.74	-7226.29	0.08	
15231.00	89.780	270.050	7928.84	7426.27	-1283.84	-7320.28	1.07	
15326.00	89.780	269.710	7929.21	7520.44	-1284.04	-7415.28	0.36	
15421.00	89.850	268.620	7929.52	7614.76	-1285.43	-7510.27	1.15	
15516.00	89.720	267.750	7929.87	7709.25	-1288.43	-7605.22	0.93	
15610.00	89.910	267.730	7930.18	7802.83	-1292.14	-7699.15	0.20	
15704.00	89.910	269.460	7930.32	7896.26	-1294.45	-7793.12	1.84	
15799.00	89.820	271.390	7930.55	7990.31	-1293.74	-7888.11	2.03	
15894.00	89.820	270.110	7930.85	8084.27	-1292.50	-7983.10	1.35	
15988.00	89.420	271.510	7931.47	8177.23	-1291.17	-8077.08	1.55	
16082.00	89.480	272.180	7932.37	8269.93	-1288.14	-8171.03	0.72	
16177.00	89.450	269.760	7933.26	8363.83	-1286.54	-8266.01	2.55	
16271.00	89.450	269.500	7934.16	8457.06	-1287.14	-8360.00	0.28	
16366.00	89.450	267.860	7935.07	8551.47	-1289.33	-8454.97	1.73	
16460.00	89.450	267.040	7935.98	8645.08	-1293.51	-8548.87	0.87	
16555.00	89.420	266.880	7936.91	8739.77	-1298.55	-8643.73	0.17	
16649.00	89.420	269.450	7937.86	8833.26	-1301.56	-8737.67	2.73	
16744.00	89.420	271.930	7938.83	8927.24	-1300.42	-8832.65	2.61	
16838.00	89.320	272.310	7939.86	9019.85	-1296.94	-8926.58	0.42	
16932.00	89.450	273.140	7940.87	9112.30	-1292.47	-9020.47	0.89	
17027.00	89.350	272.540	7941.86	9205.69	-1287.76	-9115.35	0.64	
17121.00	89.390	272.070	7942.90	9298.26	-1283.98	-9209.26	0.50	
17215.00	89.380	272.370	7943.91	9390.85	-1280.34	-9303.19	0.32	
17309.00	89.350	272.950	7944.95	9483.31	-1275.98	-9397.08	0.62	
17404.00	89.380	273.340	7946.00	9576.61	-1270.77	-9491.93	0.41	
17498.00	89.420	272.300	7946.99	9669.03	-1266.14	-9585.81	1.11	LAST BHGE MWD SURVEY
17537.00	89.420	272.300	7947.38	9707.43	-1264.58	-9624.78	0.00	PROJECTION TO BIT

HOLE & CASING SECTIONS									
- Ref Wellbore: LONE TREE 4-65 15-16 3BH AWP				Ref Wellpath: LONE TREE 4-65 15-16 3BH AWP					
String/Diameter	Start MD [ft]	End MD [ft]	Interval [ft]	Start TVD [ft]	End TVD [ft]	Start N/S [ft]	Start E/W [ft]	End N/S [ft]	End E/W [ft]
9.625in Casing Surface	25.00	2257.00	2232.00	25.00	2256.97	0.00	0.00	-0.63	-10.35
8.5in Open Hole	2274.00	17537.00	15263.00	2273.97	7947.38	-0.66	-10.42	-1264.58	-9624.78

REFERENCE WELLPATH IDENTIFICATION			
Operator	Burlington Resources	Slot	SLOT#01 LONE TREE 4-65 15-16 3BH (1869'FNL & 600'FEL, SEC.15)
Area	COLORADO	Well	LONE TREE 4-65 15-16 3BH
Field	ARAPAHOE COUNTY (NAD83/TN)	Wellbore	LONE TREE 4-65 15-16 3BH AWB
Facility	SEC.15-T04S-R65W		

TARGETS								
Name	TVD [ft]	North [ft]	East [ft]	Grid East [US ft]	Grid North [US ft]	Latitude	Longitude	Shape
SEC.15-T04S-R65W	0.00	0.00	0.00	3241111.22	1683179.96	39°42'21.630"N	104°38'34.920"W	polygon
SEC.16-T04S-R65W	0.00	0.00	0.00	3241111.22	1683179.96	39°42'21.630"N	104°38'34.920"W	polygon
LONE TREE 4-65 15-16 3BH LP ON PLAT REV-1 (2182'FSL & 1173'FEL, SEC.15)	7857.00	-1250.65	-570.57	3240552.49	1681924.00	39°42'09.270"N	104°38'42.220"W	point
LONE TREE 4-65 15-16 3BH BHL ON PLAT REV-1 (2143'FSL & 325'FWL, SEC.16)	7953.00	-1300.45	-9625.39	3231498.63	1681788.79	39°42'08.760"N	104°40'38.070"W	point

WELLPATH COMPOSITION - Ref Wellbore: LONE TREE 4-65 15-16 3BH AWB					Ref Wellpath: LONE TREE 4-65 15-16 3BH AWP	
Start MD [ft]	End MD [ft]	Positional Uncertainty Model	Log Name/Comment		Wellbore	
25.00	2228.00	BHI Generic gyro - continuous (Standard)	SURFACE SURVEYS <94-2228>		LONE TREE 4-65 15-16 3BH AWB	
2228.00	17498.00	BHI AutoTrak Curve (Short)	BHI AUTOTRACK CURVE (SHORT) <2228 - 17498...		LONE TREE 4-65 15-16 3BH AWB	
17498.00	17537.00	Blind Drilling (std)	Projection to bit		LONE TREE 4-65 15-16 3BH AWB	

REFERENCE WELLPATH IDENTIFICATION			
Operator	Burlington Resources	Slot	SLOT#01 LONE TREE 4-65 15-16 3BH (1869'FNL & 600'FEL, SEC.15)
Area	COLORADO	Well	LONE TREE 4-65 15-16 3BH
Field	ARAPAHOE COUNTY (NAD83/TN)	Wellbore	LONE TREE 4-65 15-16 3BH AWB
Facility	SEC.15-T04S-R65W		

WELLPATH COMMENTS				
MD [ft]	Inclination [°]	Azimuth [°]	TVD [ft]	Comment
2228.00	0.340	248.250	2227.97	TIE INTO GYRO SURVEYS
17498.00	89.420	272.300	7946.99	LAST BHGE MWD SURVEY
17537.00	89.420	272.300	7947.38	PROJECTION TO BIT