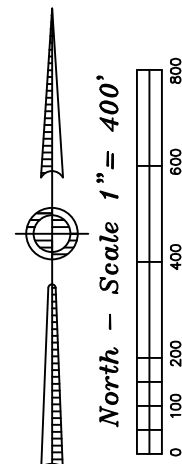
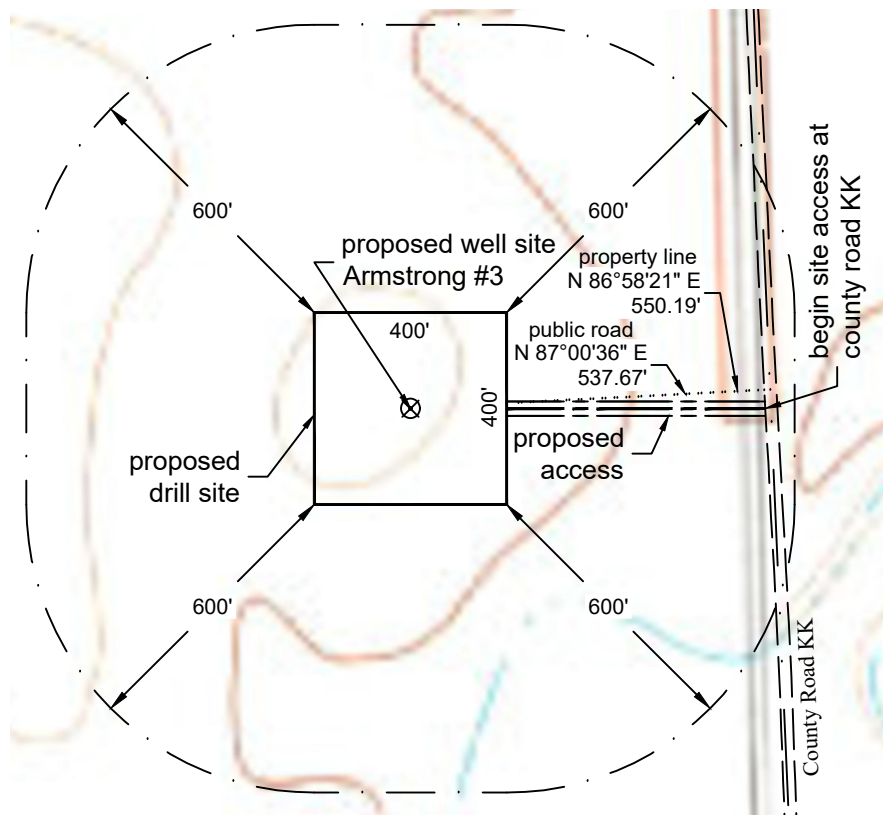


# Location Drawing



## Distance to nearest from Well:

Building:	3596'
Building Unit:	3660'
High Occupancy Building Unit:	5280'
Designated Outside Activity Area:	5280'
Public Road:	738'
Aboveground Utility:	5280'
Railroad:	5280'
Property Line:	750'
School Facility:	5280'
School Property Line:	5280'
Child Care Center:	5280'

P:\Project\2019\19056\dwg\19056\_imp.dwg October 30, 2019 - 3:24pm

Well Name:	<b>Armstrong #3</b>	Field Date 5.31.2019	Prepared for:	Project#: 19056.001
		Party Chief DCB	<b>St. Croix Operating, Inc.</b>	
Section 21-T3S-R51W-6th PM, NE-SE		Proj. Manager MDG		
Washington County, Colorado		Drawing Date 10.30.2019		
			PLS Corporation 532 West 66th Street Loveland, Colorado 80538 970.669.2100 office - info@plscorporation.com	