

79-843



00202666

RECEIVED

AUG 23 1979

COLO. OIL & GAS CONS. COMM.

LAUGHLIN-SIMMONS & CO. OF KANSAS, INC.

OIL FIELD SURVEYING
1337 NORTH MERIDIAN, SUITE 2
WICHITA, KANSAS 67203

(316) 943-5351

KW07197912

INVOICE NO.

Logan
COLORADO

COUNTY

11 7n 48w
S T R

SE SE NW

LOCATION

8-8-79
DATE

Shakespeare Oil Co

OPERATOR

2

NO.

Woodland Company

FARM

ELEVATION: 4126 Gr.

N

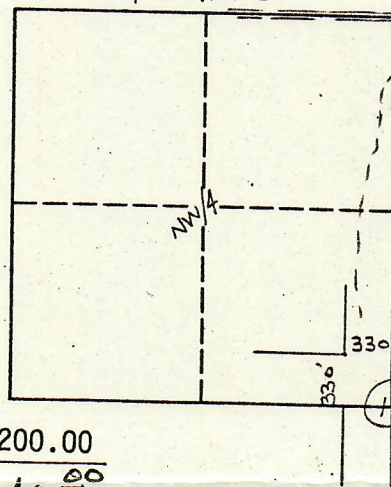
Shakespeare Oil Company
Box 669
Salem, Illinois 62881

AUTHORIZED BY: S. R. Hollensbee

PHONE # 618-548-1585

SCALE:

4" = 1 mile



5' 31' stakes
slightly sloping
pasture area
between irrigated
corn fields E-W
& plowed fields S.
Ingress North.

MINIMUM STAKING CHARGE:
(INCLUDES GROUND ELEVATION)

\$200.00

EXTRA TIME & MILEAGE:

\$ 40.00

ELEVATION CHARGE:

cc:Murfin

TOTAL:

\$ 240.00

B L McCabe

L-S SURVEYOR

Laughlin-Simmons & Co. of Kansas, Inc. is not liable in case of errors and/or omissions.