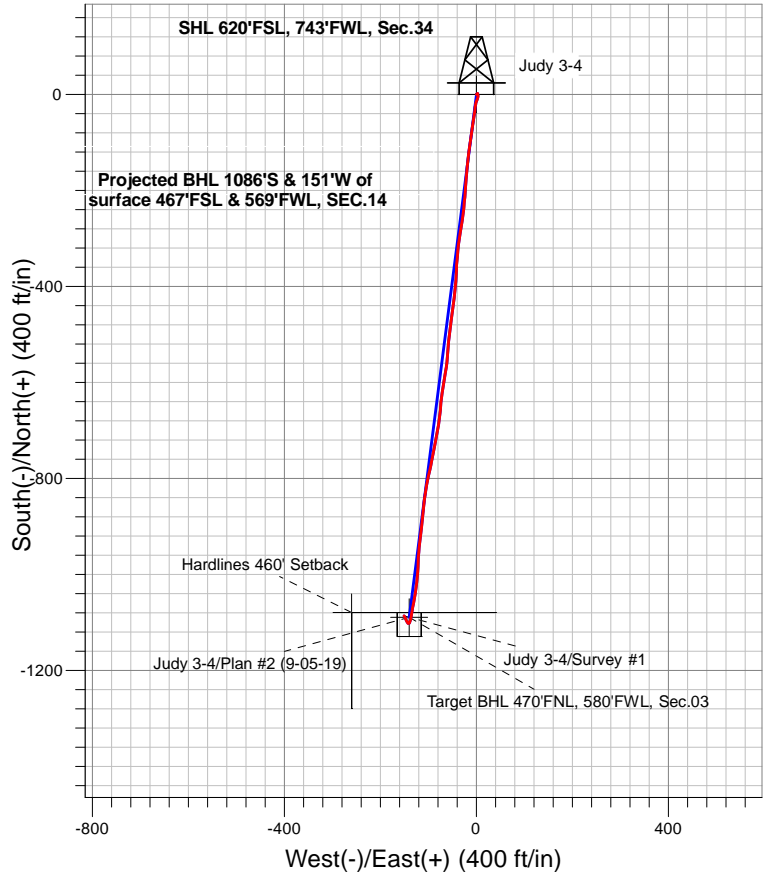


## Confluence Resources



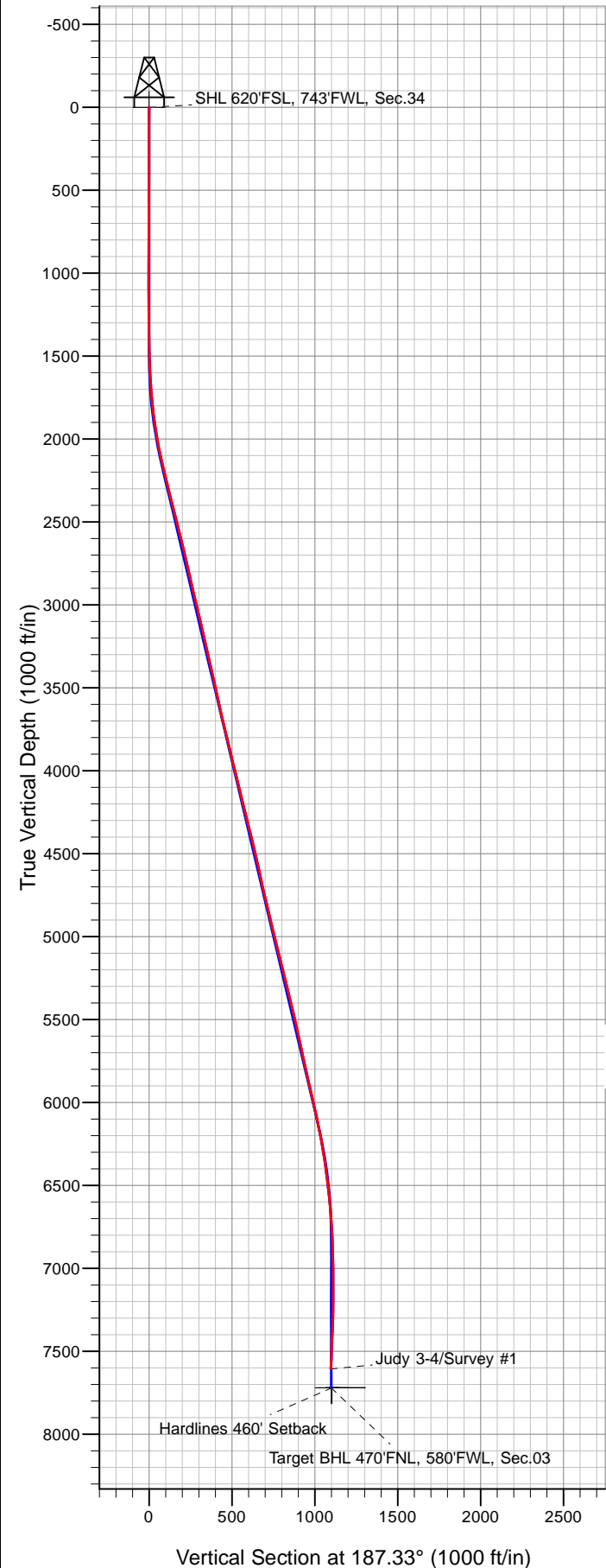
### LEGEND

- + Judy 3-4, Wellbore #1, Plan #2 (9-05-19) V0
- + Wellbore #1
- o Survey #1

## Final Survey Plot

**Projected Final Survey -**  
**7,730'MD & 7,068' TVD @ -1086.46'VS**  
**2.80 deg Inc 333.0 deg AZ**

Project: SEC.34-T01N-R65W  
Site: Judy 3-4 Pad Sec.34-T01N-R65W  
Well: Judy 3-4  
Plan: Wellbore #1





## **Confluence Resources**

**SEC.34-T01N-R65W**

**Judy 3-4 Pad Sec.34-T01N-R65W**

**Judy 3-4**

**Wellbore #1**

**Survey: Survey #1**

## **Standard Survey Report**

**11 September, 2019**

<b>Company:</b>	Confluence Resources	<b>Local Co-ordinate Reference:</b>	Well Judy 3-4
<b>Project:</b>	SEC.34-T01N-R65W	<b>TVD Reference:</b>	RKB @ 5151.5ft
<b>Site:</b>	Judy 3-4 Pad Sec.34-T01N-R65W	<b>MD Reference:</b>	RKB @ 5151.5ft
<b>Well:</b>	Judy 3-4	<b>North Reference:</b>	True
<b>Wellbore:</b>	Wellbore #1	<b>Survey Calculation Method:</b>	Minimum Curvature
<b>Design:</b>	Wellbore #1	<b>Database:</b>	US_EDM

<b>Project</b>	SEC.34-T01N-R65W, Weld County, CO		
<b>Map System:</b>	US State Plane 1983	<b>System Datum:</b>	Mean Sea Level
<b>Geo Datum:</b>	North American Datum 1983		Using Well Reference Point
<b>Map Zone:</b>	Colorado Northern Zone		Using geodetic scale factor

Site	Judy 3-4 Pad Sec.34-T01N-R65W				
Site Position:		Northing:	1,244,789.26 usft	Latitude:	40.002250
From:	Lat/Long	Easting:	3,236,186.14 usft	Longitude:	-104.656900
Position Uncertainty:	0.0 ft	Slot Radius:	13-3/16 "	Grid Convergence:	0.54 °

Well	Judy 3-4					
Well Position	+N/-S	0.0 ft	Northing:	1,244,789.25 usft	Latitude:	40.002250
	+E/-W	0.0 ft	Easting:	3,236,186.14 usft	Longitude:	-104.656900
Position Uncertainty		0.0 ft	Wellhead Elevation:	0.0 ft	Ground Level:	5,139.0 ft

<b>Wellbore</b>	Wellbore #1				
<b>Magnetics</b>	<b>Model Name</b>	<b>Sample Date</b>	<b>Declination (°)</b>	<b>Dip Angle (°)</b>	<b>Field Strength (nT)</b>
	HDGM	9/5/2019	8.10	66.27	51,843

<b>Design</b>	Wellbore #1				
<b>Audit Notes:</b>					
<b>Version:</b>	1.0	<b>Phase:</b>	ACTUAL	<b>Tie On Depth:</b>	0.0
<b>Vertical Section:</b>	<b>Depth From (TVD) (ft)</b>	<b>+N/-S (ft)</b>	<b>+E/-W (ft)</b>	<b>Direction (°)</b>	
	0.0	0.0	0.0	187.33	

<b>Survey Program</b>	<b>Date</b>	9/11/2019			
<b>From (ft)</b>	<b>To (ft)</b>	<b>Survey (Wellbore)</b>	<b>Tool Name</b>	<b>Description</b>	
112.0	7,730.0	Survey #1 (Wellbore #1)			

<b>Survey</b>										
<b>Measured Depth (ft)</b>	<b>Inclination (°)</b>	<b>Azimuth (°)</b>	<b>Vertical Depth (ft)</b>	<b>+N/-S (ft)</b>	<b>+E/-W (ft)</b>	<b>Vertical Section (ft)</b>	<b>Dogleg Rate (°/100usft)</b>	<b>Build Rate (°/100usft)</b>	<b>Turn Rate (°/100usft)</b>	
0.0	0.00	0.00	0.0	0.0	0.0	0.0	0.00	0.00	0.00	
1.0	0.00	3.90	1.0	0.0	0.0	0.0	0.00	0.00	0.00	
<b>SHL 620'FSL, 743'FWL, Sec.34</b>										
112.0	0.10	3.90	112.0	0.1	0.0	-0.1	0.09	0.09	0.00	
203.0	0.40	62.60	203.0	0.3	0.3	-0.4	0.39	0.33	64.51	
293.0	0.20	51.00	293.0	0.6	0.7	-0.7	0.23	-0.22	-12.89	
399.0	0.40	87.80	399.0	0.7	1.2	-0.8	0.25	0.19	34.72	
488.0	0.40	102.90	488.0	0.6	1.8	-0.9	0.12	0.00	16.97	
578.0	0.30	70.20	578.0	0.6	2.3	-0.9	0.24	-0.11	-36.33	
667.0	0.40	8.50	667.0	1.0	2.6	-1.4	0.41	0.11	-69.33	
756.0	0.40	352.80	756.0	1.7	2.6	-2.0	0.12	0.00	-17.64	

<b>Company:</b>	Confluence Resources	<b>Local Co-ordinate Reference:</b>	Well Judy 3-4
<b>Project:</b>	SEC.34-T01N-R65W	<b>TVD Reference:</b>	RKB @ 5151.5ft
<b>Site:</b>	Judy 3-4 Pad Sec.34-T01N-R65W	<b>MD Reference:</b>	RKB @ 5151.5ft
<b>Well:</b>	Judy 3-4	<b>North Reference:</b>	True
<b>Wellbore:</b>	Wellbore #1	<b>Survey Calculation Method:</b>	Minimum Curvature
<b>Design:</b>	Wellbore #1	<b>Database:</b>	US_EDM

Survey									
Measured Depth (ft)	Inclination (°)	Azimuth (°)	Vertical Depth (ft)	+N/-S (ft)	+E/-W (ft)	Vertical Section (ft)	Dogleg Rate (°/100usft)	Build Rate (°/100usft)	Turn Rate (°/100usft)
845.0	0.10	313.10	845.0	2.0	2.5	-2.3	0.37	-0.34	-44.61
934.0	0.20	225.40	934.0	2.0	2.4	-2.2	0.25	0.11	-98.54
1,023.0	0.10	153.50	1,023.0	1.8	2.3	-2.1	0.22	-0.11	-80.79
1,113.0	0.30	161.10	1,113.0	1.5	2.4	-1.8	0.22	0.22	8.44
1,203.0	0.20	215.60	1,203.0	1.1	2.4	-1.4	0.27	-0.11	60.56
1,291.0	0.40	157.60	1,291.0	0.7	2.4	-1.0	0.39	0.23	-65.91
1,380.0	0.30	201.30	1,380.0	0.2	2.4	-0.5	0.31	-0.11	49.10
1,495.0	2.10	148.80	1,495.0	-1.9	3.4	1.4	1.68	1.57	-45.65
1,559.0	2.60	194.50	1,558.9	-4.3	3.7	3.8	2.94	0.78	71.41
1,647.0	3.50	200.40	1,646.8	-8.7	2.2	8.4	1.08	1.02	6.70
1,737.0	4.70	199.40	1,736.5	-14.8	0.0	14.6	1.34	1.33	-1.11
1,827.0	6.50	188.30	1,826.1	-23.3	-1.9	23.3	2.33	2.00	-12.33
1,916.0	8.70	185.10	1,914.3	-35.0	-3.2	35.1	2.52	2.47	-3.60
2,006.0	9.90	191.30	2,003.1	-49.4	-5.4	49.6	1.74	1.33	6.89
2,096.0	12.00	187.80	2,091.5	-66.2	-8.1	66.7	2.45	2.33	-3.89
2,186.0	13.90	188.30	2,179.2	-86.2	-11.0	86.9	2.11	2.11	0.56
2,276.0	13.70	187.40	2,266.6	-107.4	-13.9	108.3	0.33	-0.22	-1.00
2,365.0	13.20	186.70	2,353.2	-128.0	-16.5	129.0	0.59	-0.56	-0.79
2,454.0	14.90	186.20	2,439.5	-149.5	-18.9	150.6	1.91	1.91	-0.56
2,543.0	14.30	185.00	2,525.6	-171.8	-21.1	173.1	0.75	-0.67	-1.35
2,632.0	13.50	182.90	2,612.0	-193.1	-22.6	194.4	1.06	-0.90	-2.36
2,722.0	13.60	186.00	2,699.5	-214.1	-24.2	215.5	0.81	0.11	3.44
2,810.0	12.60	183.40	2,785.2	-234.0	-25.8	235.4	1.32	-1.14	-2.95
2,900.0	13.10	190.40	2,873.0	-253.8	-28.3	255.4	1.82	0.56	7.78
2,989.0	14.10	188.80	2,959.5	-274.5	-31.7	276.3	1.20	1.12	-1.80
3,078.0	12.80	185.90	3,046.0	-295.0	-34.4	297.0	1.65	-1.46	-3.26
3,168.0	13.60	188.10	3,133.7	-315.4	-36.9	317.5	1.05	0.89	2.44
3,257.0	12.50	186.40	3,220.4	-335.3	-39.5	337.6	1.31	-1.24	-1.91
3,346.0	13.30	183.90	3,307.1	-355.1	-41.2	357.5	1.10	0.90	-2.81
3,436.0	12.50	181.80	3,394.9	-375.2	-42.3	377.5	1.03	-0.89	-2.33
3,525.0	12.30	184.40	3,481.8	-394.2	-43.3	396.5	0.67	-0.22	2.92
3,614.0	12.40	187.30	3,568.7	-413.2	-45.2	415.6	0.71	0.11	3.26
3,703.0	12.80	185.70	3,655.6	-432.5	-47.4	435.0	0.60	0.45	-1.80
3,793.0	13.50	187.60	3,743.2	-452.8	-49.8	455.4	0.91	0.78	2.11
3,882.0	14.20	188.50	3,829.6	-473.9	-52.8	476.7	0.82	0.79	1.01
3,971.0	12.80	187.60	3,916.2	-494.5	-55.7	497.5	1.59	-1.57	-1.01
4,060.0	13.90	184.30	4,002.8	-514.9	-57.8	518.1	1.50	1.24	-3.71
4,151.0	13.90	184.60	4,091.1	-536.7	-59.5	539.9	0.08	0.00	0.33
4,240.0	13.80	185.70	4,177.5	-557.9	-61.4	561.2	0.32	-0.11	1.24
4,329.0	14.60	189.90	4,263.8	-579.5	-64.4	583.0	1.47	0.90	4.72
4,418.0	13.50	189.90	4,350.1	-600.8	-68.1	604.6	1.24	-1.24	0.00
4,507.0	13.80	188.00	4,436.6	-621.5	-71.4	625.6	0.61	0.34	-2.13
4,597.0	13.30	185.90	4,524.1	-642.5	-73.9	646.7	0.78	-0.56	-2.33

<b>Company:</b>	Confluence Resources	<b>Local Co-ordinate Reference:</b>	Well Judy 3-4
<b>Project:</b>	SEC.34-T01N-R65W	<b>TVD Reference:</b>	RKB @ 5151.5ft
<b>Site:</b>	Judy 3-4 Pad Sec.34-T01N-R65W	<b>MD Reference:</b>	RKB @ 5151.5ft
<b>Well:</b>	Judy 3-4	<b>North Reference:</b>	True
<b>Wellbore:</b>	Wellbore #1	<b>Survey Calculation Method:</b>	Minimum Curvature
<b>Design:</b>	Wellbore #1	<b>Database:</b>	US_EDM

Survey									
Measured Depth (ft)	Inclination (°)	Azimuth (°)	Vertical Depth (ft)	+N/-S (ft)	+E/-W (ft)	Vertical Section (ft)	Dogleg Rate (°/100usft)	Build Rate (°/100usft)	Turn Rate (°/100usft)
4,686.0	11.60	183.60	4,611.0	-661.6	-75.6	665.8	1.99	-1.91	-2.58
4,777.0	12.50	187.60	4,700.0	-680.5	-77.4	684.8	1.35	0.99	4.40
4,866.0	13.90	191.10	4,786.7	-700.5	-80.8	705.1	1.81	1.57	3.93
4,955.0	13.30	191.50	4,873.2	-721.0	-84.9	726.0	0.68	-0.67	0.45
5,045.0	14.00	191.10	4,960.6	-741.9	-89.0	747.2	0.78	0.78	-0.44
5,134.0	13.40	190.40	5,047.1	-762.6	-93.0	768.2	0.70	-0.67	-0.79
5,224.0	14.60	192.70	5,134.4	-783.9	-97.3	789.9	1.47	1.33	2.56
5,313.0	13.80	191.70	5,220.7	-805.2	-102.0	811.7	0.94	-0.90	-1.12
5,402.0	14.10	189.00	5,307.1	-826.3	-105.8	833.1	0.81	0.34	-3.03
5,492.0	12.70	186.70	5,394.6	-847.0	-108.7	853.9	1.66	-1.56	-2.56
5,581.0	13.40	186.00	5,481.3	-867.0	-110.9	874.0	0.81	0.79	-0.79
5,670.0	12.60	184.60	5,568.0	-886.9	-112.7	894.0	0.97	-0.90	-1.57
5,760.0	12.40	186.20	5,655.9	-906.3	-114.6	913.5	0.44	-0.22	1.78
5,848.0	12.40	188.10	5,741.8	-925.0	-116.9	932.4	0.46	0.00	2.16
5,937.0	12.50	186.00	5,828.8	-944.1	-119.3	951.6	0.52	0.11	-2.36
6,027.0	13.60	182.70	5,916.4	-964.3	-120.8	971.9	1.48	1.22	-3.67
6,116.0	12.30	181.50	6,003.2	-984.3	-121.5	991.7	1.49	-1.46	-1.35
6,205.0	12.50	186.00	6,090.1	-1,003.3	-122.8	1,010.8	1.11	0.22	5.06
6,294.0	11.20	188.30	6,177.2	-1,021.4	-125.0	1,029.1	1.55	-1.46	2.58
6,383.0	9.70	186.90	6,264.7	-1,037.4	-127.2	1,045.2	1.71	-1.69	-1.57
6,472.0	8.60	190.20	6,352.6	-1,051.4	-129.3	1,059.3	1.37	-1.24	3.71
6,561.0	7.70	191.30	6,440.7	-1,063.8	-131.6	1,071.9	1.03	-1.01	1.24
6,651.0	6.40	189.70	6,530.0	-1,074.7	-133.6	1,083.0	1.46	-1.44	-1.78
6,740.0	5.20	189.40	6,618.5	-1,083.6	-135.1	1,091.9	1.35	-1.35	-0.34
6,830.0	3.90	191.30	6,708.3	-1,090.6	-136.4	1,099.1	1.45	-1.44	2.11
6,919.0	2.70	194.80	6,797.1	-1,095.6	-137.5	1,104.2	1.37	-1.35	3.93
7,008.0	1.80	197.30	6,886.0	-1,098.9	-138.5	1,107.6	1.02	-1.01	2.81
7,142.0	1.00	229.30	7,020.0	-1,101.7	-140.0	1,110.6	0.81	-0.60	23.88
7,232.0	0.70	268.80	7,110.0	-1,102.2	-141.1	1,111.2	0.71	-0.33	43.89
7,321.0	1.10	314.40	7,199.0	-1,101.7	-142.3	1,110.8	0.89	0.45	51.24
7,410.0	1.60	327.40	7,288.0	-1,100.0	-143.6	1,109.3	0.66	0.56	14.61
7,500.0	2.80	330.30	7,377.9	-1,097.0	-145.3	1,106.6	1.34	1.33	3.22
7,589.0	3.20	334.90	7,466.8	-1,092.9	-147.5	1,102.8	0.52	0.45	5.17
7,675.0	2.80	333.00	7,552.6	-1,088.9	-149.4	1,099.0	0.48	-0.47	-2.21
7,730.0	2.80	333.00	7,607.6	-1,086.5	-150.7	1,096.8	0.00	0.00	0.00
Hardlines 460' Setback - Target BHL 470'FNL, 580'FWL, Sec.03									

Checked By: \_\_\_\_\_ Approved By: \_\_\_\_\_ Date: \_\_\_\_\_