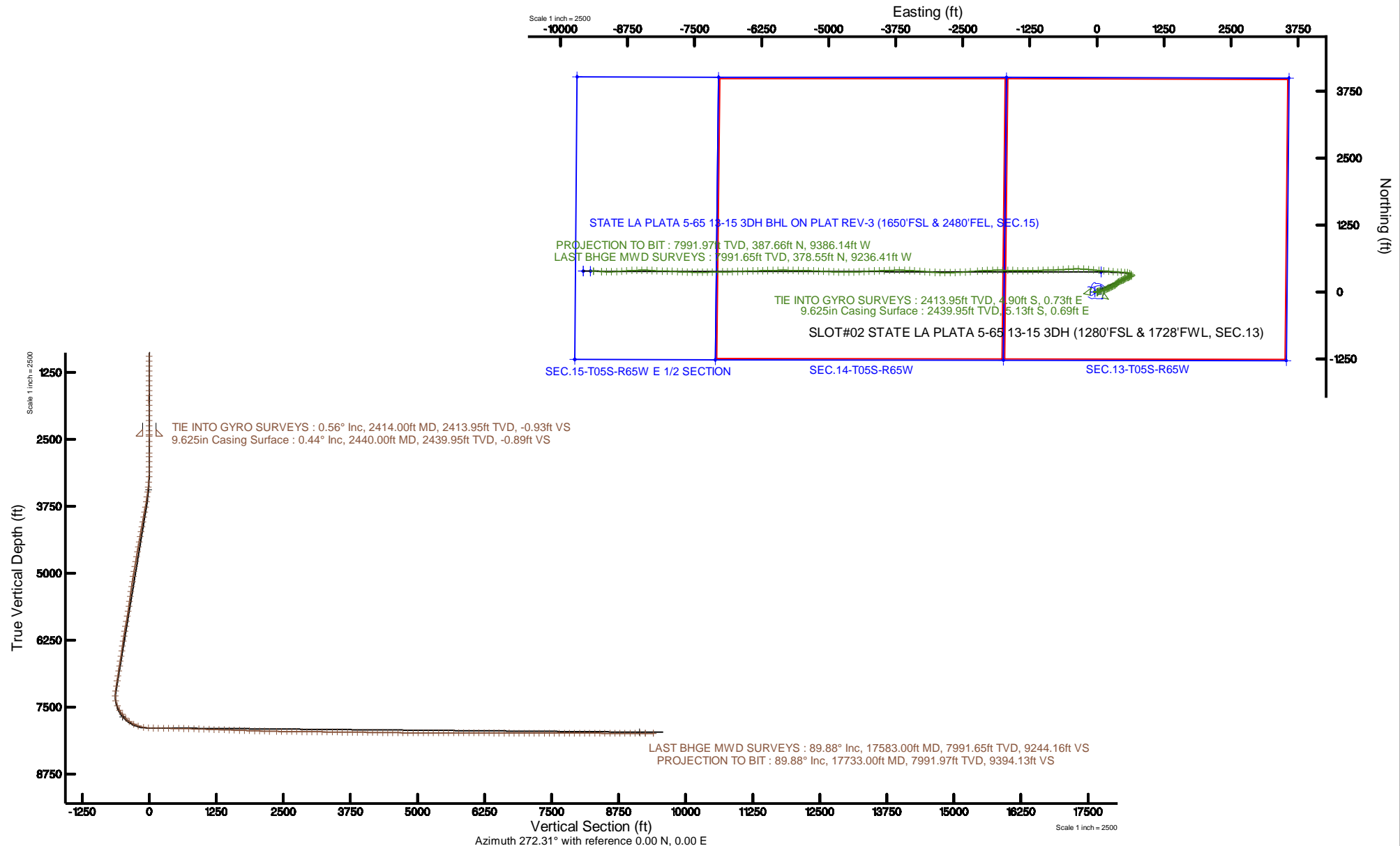


Burlington Resources

Location: COLORADO Slot: SLOT#02 STATE LA PLATA 5-65 13-15 3DH (1280'FSL & 1728'FWL, SEC.13)
Field: ARAPAHOE COUNTY (NAD83/TN) Well: STATE LA PLATA 5-65 13-15 3DH
Facility: SEC.13-T05S-R65W Wellbore: STATE LA PLATA 5-65 13-15 3DH PWB

Plot reference wellpath is STATE LA PLATA 5-65 13-15 3DH (REV-D.0) PWB	Grid System: NAD83 / Lambert Colorado SP, Central Zone (602), US feet
True vertical depths are referenced to H&P 448 (26.2'KB) (RKB)	North Reference: True north
Measured depths are referenced to H&P 448 (26.2'KB) (RKB)	Scale: True distance
H&P 448 (26.2'KB) (RKB) to Mean Sea Level: 5923 feet	Depths are in feet
Mean Sea Level to Mud line (At Slot: SLOT#02 STATE LA PLATA 5-65 13-15 3DH (1280'FSL & 1728'FWL, SEC.13)): 0 feet	Created by: bernjacj on 2017-12-27
Coordinates are in feet referenced to Slot	Database: WA_DEN_Denver_Deln

BURLINGTON RESOURCES



REFERENCE WELLPATH IDENTIFICATION			
Operator	Burlington Resources	Slot	SLOT#02 STATE LA PLATA 5-65 13-15 3DH (1280'FSL & 1728'FWL, SEC.13)
Area	COLORADO	Well	STATE LA PLATA 5-65 13-15 3DH
Field	ARAPAHOE COUNTY (NAD83/TN)	Wellbore	STATE LA PLATA 5-65 13-15 3DH AWP
Facility	SEC.13-T05S-R65W		

REPORT SETUP INFORMATION			
Projection System	NAD83 / Lambert Colorado SP, Central Zone (502), US feet	Software System	WellArchitect® 5.1
North Reference	True	User	Bensjacj
Scale	0.999976	Report Generated	12/27/2017 at 12:08 PM
Convergence at slot	0.56° East	Database/Source file	WA_DEN_Denver_Defn/STATE_LA_PLATA_5-65_13-15_3DH_AWP.xml

WELLPATH LOCATION						
	Local coordinates		Grid coordinates		Geographic coordinates	
	North[ft]	East[ft]	Easting[US ft]	Northing[US ft]	Latitude	Longitude
Slot Location	0.00	40.70	3248860.75	1649332.06	39°36'46.390"N	104°36'59.980"W
Facility Reference Pt			3248820.06	1649331.66	39°36'46.390"N	104°37'00.500"W
Field Reference Pt			3256721.09	1679994.75	39°41'48.650"N	104°35'15.610"W

WELLPATH DATUM			
Calculation method	Minimum curvature	H&P 448 (26.2'KB) (RKB) to Facility Vertical Datum	5923.00ft
Horizontal Reference Pt	Slot	H&P 448 (26.2'KB) (RKB) to Mean Sea Level	5923.00ft
Vertical Reference Pt	H&P 448 (26.2'KB) (RKB)	H&P 448 (26.2'KB) (RKB) to Mud Line at Slot (SLOT#02 STATE LA PLATA 5-65 13-15 3DH (1280'FSL & 1728'FWL, SEC.13))	5923.00ft
MD Reference Pt	H&P 448 (26.2'KB) (RKB)	Section Origin	N 0.00, E 0.00 ft
Field Vertical Reference	Mean Sea Level	Section Azimuth	272.31°

REFERENCE WELLPATH IDENTIFICATION			
Operator	Burlington Resources	Slot	SLOT#02 STATE LA PLATA 5-65 13-15 3DH (1280'FSL & 1728'FWL, SEC.13)
Area	COLORADO	Well	STATE LA PLATA 5-65 13-15 3DH
Field	ARAPAHOE COUNTY (NAD83/TN)	Wellbore	STATE LA PLATA 5-65 13-15 3DH AWP
Facility	SEC.13-T05S-R65W		

WELLPATH DATA (162 stations)								
MD [ft]	Inclination [°]	Azimuth [°]	TVD [ft]	Vert Sect [ft]	North [ft]	East [ft]	DLS [°/100ft]	Comments
2414.00	0.560	190.970	2413.95	-0.93	-4.90	0.73	0.03	TIE INTO GYRO SURVEYS
2541.00	0.040	62.310	2540.95	-0.87	-5.49	0.65	0.46	
2635.00	0.040	96.170	2634.95	-0.93	-5.48	0.71	0.02	
2761.00	0.070	197.870	2760.95	-0.96	-5.56	0.73	0.07	
2824.00	0.040	176.800	2823.95	-0.95	-5.62	0.72	0.06	
2919.00	0.030	258.720	2918.95	-0.93	-5.66	0.70	0.05	
3014.00	0.060	182.230	3013.95	-0.90	-5.71	0.67	0.06	
3108.00	1.240	44.100	3107.94	-1.58	-5.03	1.38	1.37	
3203.00	3.090	45.280	3202.87	-4.01	-2.49	3.91	1.95	
3297.00	5.000	59.230	3296.63	-9.17	1.39	9.23	2.27	
3391.00	6.340	77.050	3390.18	-17.61	4.65	17.81	2.34	
3489.00	7.480	78.700	3487.46	-29.03	7.11	29.34	1.18	
3580.00	8.790	74.470	3577.55	-41.41	10.13	41.85	1.58	
3675.00	9.560	71.600	3671.33	-55.70	14.57	56.33	0.94	
3769.00	10.800	79.440	3763.86	-71.58	18.65	72.39	1.98	
3864.00	10.860	79.110	3857.16	-88.97	21.97	89.93	0.09	
3959.00	10.870	77.170	3950.46	-106.33	25.65	107.46	0.39	
4053.00	10.730	72.890	4042.80	-123.14	30.19	124.46	0.87	
4147.00	11.020	69.970	4135.11	-139.71	35.84	141.26	0.66	
4241.00	10.970	68.950	4227.38	-156.23	42.13	158.05	0.21	
4336.00	10.890	65.080	4320.66	-172.50	49.16	174.63	0.78	
4431.00	10.770	64.580	4413.97	-188.34	56.75	190.78	0.16	
4525.00	10.900	66.880	4506.29	-204.14	64.01	206.89	0.48	
4619.00	10.890	65.100	4598.60	-220.06	71.24	223.12	0.36	
4714.00	10.850	64.210	4691.90	-235.93	78.91	239.31	0.18	
4808.00	10.850	67.230	4784.22	-251.75	86.18	255.43	0.60	
4903.00	10.850	67.390	4877.52	-267.96	93.08	271.93	0.03	
4997.00	10.800	62.430	4969.85	-283.62	100.56	287.90	0.99	
5091.00	10.740	61.140	5062.19	-298.75	108.86	303.38	0.26	
5186.00	10.780	60.090	5155.52	-313.84	117.56	318.83	0.21	
5280.00	10.940	55.020	5247.84	-328.37	127.06	333.76	1.03	
5375.00	10.640	48.510	5341.16	-341.87	138.04	347.72	1.32	
5469.00	10.880	48.730	5433.51	-354.56	149.64	360.89	0.26	
5564.00	10.940	47.360	5526.79	-367.44	161.66	374.26	0.28	
5658.00	10.850	50.520	5619.10	-380.35	173.33	387.65	0.64	
5753.00	10.780	55.700	5712.42	-394.14	184.02	401.89	1.03	
5847.00	10.890	61.890	5804.74	-408.86	193.16	416.98	1.24	
5942.00	10.810	65.020	5898.05	-424.51	201.15	432.97	0.63	
6036.00	10.850	70.070	5990.37	-440.54	207.89	449.28	1.01	
6131.00	10.670	67.930	6083.70	-456.82	214.24	465.84	0.46	
6225.00	10.630	65.130	6176.09	-472.46	221.15	481.77	0.55	
6320.00	9.710	59.060	6269.59	-486.96	228.96	496.59	1.49	
6414.00	9.670	53.570	6362.26	-499.75	237.72	509.74	0.98	
6509.00	9.640	57.480	6455.91	-512.50	246.74	522.87	0.69	
6603.00	9.690	70.590	6548.59	-526.31	253.60	536.97	2.34	

REFERENCE WELLPATH IDENTIFICATION			
Operator	Burlington Resources	Slot	SLOT#02 STATE LA PLATA 5-65 13-15 3DH (1280'FSL & 1728'FWL, SEC.13)
Area	COLORADO	Well	STATE LA PLATA 5-65 13-15 3DH
Field	ARAPAHOE COUNTY (NAD83/TN)	Wellbore	STATE LA PLATA 5-65 13-15 3DH AWP
Facility	SEC.13-T05S-R65W		

WELLPATH DATA (162 stations)								
MD [ft]	Inclination [°]	Azimuth [°]	TVD [ft]	Vert Sect [ft]	North [ft]	East [ft]	DLS [°/100ft]	Comments
6698.00	9.650	71.100	6642.24	-541.16	258.83	552.04	0.10	
6792.00	9.790	68.060	6734.89	-555.79	264.37	566.91	0.57	
6887.00	9.710	67.040	6828.52	-570.40	270.52	581.78	0.20	
6981.00	9.640	65.210	6921.18	-584.58	276.91	596.22	0.34	
7075.00	9.660	65.850	7013.85	-598.64	283.43	610.56	0.12	
7170.00	9.620	67.400	7107.51	-612.98	289.75	625.17	0.28	
7264.00	9.680	67.910	7200.18	-627.30	295.74	639.74	0.11	
7359.00	10.000	2.380	7294.05	-634.60	307.01	647.50	11.18	
7453.00	16.840	315.100	7385.68	-624.58	324.88	638.20	13.18	
7547.00	24.560	296.360	7473.64	-596.68	343.25	611.01	10.73	
7642.00	31.110	281.660	7557.70	-554.34	357.01	569.19	9.94	
7737.00	36.960	270.710	7636.46	-501.48	362.33	516.50	8.90	
7831.00	44.140	272.220	7707.84	-440.41	363.95	455.46	7.71	
7925.00	53.400	275.800	7769.74	-369.85	369.04	385.04	10.26	
8020.00	62.630	275.130	7820.01	-289.48	376.68	304.92	9.73	
8114.00	71.840	273.980	7856.34	-202.97	383.53	218.61	9.86	
8209.00	78.780	274.060	7880.42	-111.17	389.97	126.99	7.31	
8304.00	87.940	276.160	7891.40	-17.03	398.38	33.11	9.89	
8398.00	89.050	275.550	7893.86	76.76	407.97	-60.36	1.35	
8493.00	89.200	275.670	7895.32	171.59	417.25	-154.90	0.20	
8587.00	89.290	272.410	7896.55	265.53	423.87	-248.64	3.47	
8682.00	89.230	270.650	7897.78	360.51	426.41	-343.60	1.85	
8776.00	89.290	268.320	7899.00	454.38	425.57	-437.58	2.48	
8870.00	89.170	266.590	7900.26	548.03	421.39	-531.47	1.84	
8965.00	88.430	266.780	7902.25	642.55	415.90	-626.29	0.80	
9059.00	88.150	267.250	7905.05	736.11	411.01	-720.12	0.58	
9154.00	88.250	268.190	7908.04	830.75	407.23	-815.00	0.99	
9248.00	88.180	268.210	7910.97	924.47	404.28	-908.91	0.08	
9343.00	88.280	268.040	7913.90	1019.17	401.17	-1003.81	0.21	
9437.00	88.120	267.830	7916.85	1112.85	397.79	-1097.71	0.28	
9532.00	88.150	268.280	7919.94	1207.54	394.56	-1192.60	0.47	
9626.00	88.150	269.590	7922.98	1301.32	392.82	-1286.53	1.39	
9720.00	88.060	270.490	7926.09	1395.20	392.88	-1380.48	0.96	
9815.00	88.150	271.200	7929.23	1490.11	394.28	-1475.42	0.75	
9909.00	88.120	271.430	7932.29	1584.05	396.44	-1569.34	0.25	
10003.00	88.030	271.460	7935.45	1677.98	398.81	-1663.26	0.10	
10098.00	88.090	271.040	7938.66	1772.91	400.88	-1758.18	0.45	
10192.00	88.090	269.910	7941.79	1866.81	401.66	-1852.13	1.20	
10287.00	88.210	268.520	7944.86	1961.62	400.36	-1947.06	1.47	
10381.00	88.030	267.620	7947.95	2055.31	397.19	-2040.96	0.98	
10476.00	88.120	266.920	7951.14	2149.89	392.67	-2135.80	0.74	
10570.00	88.650	266.170	7953.79	2243.38	387.01	-2229.59	0.98	
10701.00	89.230	265.800	7956.21	2373.56	377.84	-2360.24	0.53	
10796.00	89.540	265.790	7957.23	2467.94	370.87	-2454.98	0.33	
10890.00	89.480	266.060	7958.03	2561.35	364.19	-2548.74	0.29	



REFERENCE WELLPATH IDENTIFICATION			
Operator	Burlington Resources	Slot	SLOT#02 STATE LA PLATA 5-65 13-15 3DH (1280'FSL & 1728'FWL, SEC.13)
Area	COLORADO	Well	STATE LA PLATA 5-65 13-15 3DH
Field	ARAPAHOE COUNTY (NAD83/TN)	Wellbore	STATE LA PLATA 5-65 13-15 3DH AWP
Facility	SEC.13-T05S-R65W		

WELLPATH DATA (162 stations)								
MD [ft]	Inclination [°]	Azimuth [°]	TVD [ft]	Vert Sect [ft]	North [ft]	East [ft]	DLS [°/100ft]	Comments
10985.00	89.480	267.930	7958.90	2655.93	359.21	-2643.60	1.97	
11079.00	89.480	269.850	7959.75	2749.76	357.39	-2737.58	2.04	
11174.00	89.380	270.510	7960.69	2844.69	357.69	-2832.57	0.70	
11268.00	89.450	271.150	7961.65	2938.65	359.05	-2926.56	0.68	
11362.00	89.290	273.410	7962.69	3032.64	362.79	-3020.47	2.41	
11457.00	89.320	274.120	7963.84	3127.60	369.03	-3115.26	0.75	
11551.00	89.350	274.750	7964.93	3221.53	376.30	-3208.97	0.67	
11646.00	89.540	274.860	7965.85	3316.43	384.25	-3303.63	0.23	
11740.00	89.380	274.180	7966.74	3410.36	391.66	-3397.33	0.74	
11834.00	89.320	272.530	7967.80	3504.34	397.16	-3491.16	1.76	
11929.00	89.420	271.460	7968.85	3599.33	400.47	-3586.10	1.13	
12023.00	89.380	270.110	7969.83	3693.29	401.76	-3680.08	1.44	
12118.00	89.350	268.770	7970.88	3788.16	400.83	-3775.07	1.41	
12212.00	89.420	268.160	7971.89	3881.94	398.31	-3869.03	0.65	
12306.00	89.600	268.340	7972.70	3975.70	395.44	-3962.98	0.27	
12400.00	89.350	267.720	7973.56	4069.44	392.21	-4056.92	0.71	
12495.00	89.260	267.670	7974.71	4164.12	388.39	-4151.84	0.11	
12589.00	89.290	267.420	7975.90	4257.79	384.36	-4245.74	0.27	
12684.00	89.200	266.120	7977.15	4352.33	379.01	-4340.58	1.37	
12778.00	89.230	266.950	7978.44	4445.85	373.33	-4434.40	0.88	
12873.00	89.290	268.450	7979.67	4540.53	369.52	-4529.32	1.58	
12967.00	89.320	269.590	7980.81	4634.37	367.91	-4623.29	1.21	
13061.00	89.380	270.860	7981.87	4728.30	368.28	-4717.28	1.35	
13156.00	89.820	271.530	7982.54	4823.27	370.26	-4812.26	0.84	
13250.00	89.850	272.390	7982.81	4917.27	373.48	-4906.20	0.92	
13345.00	89.910	272.530	7983.01	5012.27	377.55	-5001.12	0.16	
13440.00	89.820	272.560	7983.23	5107.27	381.77	-5096.02	0.10	
13534.00	89.820	272.710	7983.53	5201.27	386.09	-5189.92	0.16	
13628.00	89.880	272.610	7983.77	5295.27	390.46	-5283.82	0.12	
13723.00	89.910	271.170	7983.95	5390.26	393.59	-5378.77	1.52	
13817.00	89.970	270.850	7984.04	5484.24	395.25	-5472.75	0.35	
13912.00	90.030	271.210	7984.04	5579.21	396.95	-5567.74	0.38	
14006.00	89.850	271.350	7984.14	5673.20	399.05	-5661.71	0.24	
14101.00	89.880	270.550	7984.37	5768.17	400.63	-5756.70	0.84	
14195.00	89.910	270.130	7984.54	5862.11	401.19	-5850.70	0.45	
14290.00	89.910	269.410	7984.69	5957.02	400.80	-5945.70	0.76	
14384.00	89.880	268.850	7984.86	6050.87	399.38	-6039.68	0.60	
14479.00	89.910	267.870	7985.03	6145.65	396.66	-6134.64	1.03	
14573.00	90.030	268.880	7985.08	6239.42	393.99	-6228.60	1.08	
14668.00	89.880	268.520	7985.16	6334.24	391.84	-6323.58	0.41	
14761.00	89.660	268.090	7985.53	6427.01	389.09	-6416.54	0.52	
14855.00	89.940	268.360	7985.86	6520.77	386.18	-6510.49	0.41	
14949.00	89.720	268.090	7986.14	6614.53	383.26	-6604.45	0.37	
15043.00	90.060	267.900	7986.32	6708.26	379.97	-6698.39	0.41	
15137.00	89.750	268.000	7986.48	6801.99	376.61	-6792.33	0.35	

REFERENCE WELLPATH IDENTIFICATION			
Operator	Burlington Resources	Slot	SLOT#02 STATE LA PLATA 5-65 13-15 3DH (1280'FSL & 1728'FWL, SEC.13)
Area	COLORADO	Well	STATE LA PLATA 5-65 13-15 3DH
Field	ARAPAHOE COUNTY (NAD83/TN)	Wellbore	STATE LA PLATA 5-65 13-15 3DH AWP
Facility	SEC.13-T05S-R65W		

WELLPATH DATA (162 stations)								
MD [ft]	Inclination [°]	Azimuth [°]	TVD [ft]	Vert Sect [ft]	North [ft]	East [ft]	DLS [°/100ft]	Comments
15231.00	89.880	269.080	7986.78	6895.78	374.22	-6886.30	1.16	
15324.00	90.030	270.160	7986.85	6988.68	373.60	-6979.29	1.17	
15418.00	89.660	269.160	7987.11	7082.58	373.04	-7073.29	1.13	
15512.00	89.780	267.380	7987.57	7176.34	370.21	-7167.24	1.90	
15605.00	89.850	267.730	7987.87	7269.02	366.24	-7260.16	0.38	
15699.00	89.940	269.550	7988.04	7362.82	364.01	-7354.13	1.94	
15793.00	89.850	270.390	7988.21	7456.74	363.96	-7448.12	0.90	
15886.00	90.030	272.160	7988.31	7549.72	366.03	-7541.10	1.91	
15980.00	89.780	272.070	7988.46	7643.72	369.50	-7635.03	0.28	
16074.00	90.030	272.010	7988.62	7737.72	372.84	-7728.97	0.27	
16168.00	89.780	272.470	7988.78	7831.72	376.52	-7822.90	0.56	
16262.00	89.820	273.420	7989.10	7925.71	381.35	-7916.78	1.01	
16357.00	89.850	271.430	7989.38	8020.71	385.36	-8011.69	2.09	
16451.00	89.880	270.930	7989.60	8114.69	387.30	-8105.66	0.53	
16545.00	90.030	272.880	7989.67	8208.68	390.43	-8199.61	2.08	
16640.00	89.910	274.430	7989.72	8303.65	396.48	-8294.41	1.64	
16734.00	89.820	271.680	7989.94	8397.64	401.49	-8388.27	2.93	
16829.00	89.940	269.060	7990.14	8492.57	402.10	-8483.26	2.76	
16923.00	89.880	268.780	7990.29	8586.41	400.33	-8577.24	0.30	
17017.00	89.940	267.700	7990.44	8680.17	397.45	-8671.20	1.15	
17112.00	89.750	266.110	7990.70	8774.74	392.32	-8766.05	1.69	
17206.00	89.660	265.110	7991.18	8868.10	385.12	-8859.78	1.07	
17300.00	89.940	267.110	7991.51	8961.54	378.74	-8953.55	2.15	
17394.00	89.910	268.830	7991.63	9055.27	375.41	-9047.49	1.83	
17489.00	90.090	270.760	7991.63	9150.17	375.07	-9142.49	2.04	
17583.00	89.880	273.480	7991.65	9244.16	378.55	-9236.41	2.90	LAST BHGE MWD SURVEYS
17733.00	89.880	273.480	7991.97	9394.13	387.66	-9386.14	0.00	PROJECTION TO BIT

HOLE & CASING SECTIONS - Ref Wellbore: STATE LA PLATA 5-65 13-15 3DH AWP Ref Wellpath: STATE LA PLATA 5-65 13-15 3DH AWP									
String/Diameter	Start MD [ft]	End MD [ft]	Interval [ft]	Start TVD [ft]	End TVD [ft]	Start N/S [ft]	Start E/W [ft]	End N/S [ft]	End E/W [ft]
9.625in Casing Surface	26.20	2440.00	2413.80	26.20	2439.95	0.00	0.00	-5.13	0.69
8.5in Open Hole	2440.00	17733.00	15293.00	2439.95	7991.97	-5.13	0.69	387.66	-9386.14

TARGETS								
Name	TVD [ft]	North [ft]	East [ft]	Grid East [US ft]	Grid North [US ft]	Latitude	Longitude	Shape
SEC.13-T05S-R65W	1.80	0.00	-40.70	3248820.06	1649331.66	39°36'46.390"N	104°37'00.500"W	polygon
SEC.13-T05S-R65W NE CORNER	1.80	3992.90	3578.41	3252400.07	1653359.45	39°37'25.849"N	104°36'14.249"W	point
SEC.13-T05S-R65W NW CORNER	1.80	4002.90	-1687.04	3247134.91	1653318.26	39°37'25.950"N	104°37'21.540"W	point
SEC.13-T05S-R65W SE CORNER	1.80	-1284.91	3528.15	3252401.13	1648081.54	39°36'33.689"N	104°36'14.900"W	point
SEC.13-T05S-R65W SW CORNER	1.80	-1276.72	-1741.49	3247131.81	1648038.50	39°36'33.772"N	104°37'22.231"W	point
SEC.14-T05S-R65W	1.80	0.00	-40.70	3248820.06	1649331.66	39°36'46.390"N	104°37'00.500"W	polygon
SEC.14-T05S-R65W NW CORNER	1.80	4006.00	-7052.49	3241769.83	1653269.19	39°37'25.972"N	104°38'30.109"W	point
SEC.14-T05S-R65W SW CORNER	1.80	-1271.06	-7115.93	3241757.70	1647991.91	39°36'33.818"N	104°38'30.901"W	point
SEC.15-T05S-R65W E 1/2 SECTION	1.80	0.00	-40.70	3248820.06	1649331.66	39°36'46.390"N	104°37'00.500"W	polygon
SEC.15-T05S-R65W N 1/2 CORNER	1.80	4014.88	-9688.87	3239133.56	1653252.44	39°37'26.051"N	104°39'03.802"W	point
SEC.15-T05S-R65W S 1/2 CORNER	1.80	-1262.91	-9734.54	3239139.21	1647974.59	39°36'33.890"N	104°39'04.360"W	point
STATE LA PLATA 5-65 13-15 3DH BPI ON PLAT REV-3 (1650'FSL & 1800'FWL, SEC.13)	7890.00	370.33	75.91	3248933.06	1649703.10	39°36'50.050"N	104°36'59.010"W	point
	7961.20	386.29	-9575.08	3239282.62	1649625.22	39°36'50.190"N	104°39'02.330"W	point

TARGETS								
Name	TVD [ft]	North [ft]	East [ft]	Grid East [US ft]	Grid North [US ft]	Latitude	Longitude	Shape
STATE LA PLATA 5-65 13-15 3DH BHL ON PLAT REV-2 (1650'FSL & 2480'FEL, SEC.15)								
STATE LA PLATA 5-65 13-15 3DH BPI ON PLAT REV-2 (1650'FSL & 1800'FWL, SEC.13)	7961.20	370.33	75.91	3248933.06	1649703.10	39°36'50.050"N	104°36'59.010"W	point
STATE LA PLATA 5-65 13-15 3DH EPI ON PLAT REV-2 (1650'FSL & 2345'FEL, SEC.15)	7961.20	385.23	-9440.47	3239417.23	1649625.47	39°36'50.180"N	104°39'00.610"W	point
STATE LA PLATA 5-65 13-15 3DH BHL ON PLAT REV-1 (1320'FSL & 2480'FEL, SEC.15)	7961.80	56.43	-9579.11	3239281.79	1649295.35	39°36'46.930"N	104°39'02.380"W	point
STATE LA PLATA 5-65 13-15 3DH BPI ON PLAT REV-1 (1320'FSL & 1800'FWL, SEC.13)	7961.80	40.47	72.00	3248932.35	1649373.23	39°36'46.790"N	104°36'59.060"W	point
STATE LA PLATA 5-65 13-15 3DH EPI ON PLAT REV-1 (1320'FSL & 2345'FEL, SEC.15)	7961.80	55.37	-9444.50	3239416.40	1649295.59	39°36'46.920"N	104°39'00.660"W	point
STATE LA PLATA 5-65 13-15 3DH BHL ON PLAT REV-3 (1650'FSL & 2480'FEL, SEC.15)	7970.00	386.29	-9575.08	3239282.62	1649625.22	39°36'50.190"N	104°39'02.330"W	point

TARGETS								
Name	TVD [ft]	North [ft]	East [ft]	Grid East [US ft]	Grid North [US ft]	Latitude	Longitude	Shape
STATE LA PLATA 5-65 13-15 3DH EPI ON PLAT REV-3 (1650'FSL & 2345'FEL, SEC.15)	7970.00	385.23	-9440.47	3239417.23	1649625.47	39°36'50.180"N	104°39'00.610"W	point

REFERENCE WELLPATH IDENTIFICATION			
Operator	Burlington Resources	Slot	SLOT#02 STATE LA PLATA 5-65 13-15 3DH (1280'FSL & 1728'FWL, SEC.13)
Area	COLORADO	Well	STATE LA PLATA 5-65 13-15 3DH
Field	ARAPAHOE COUNTY (NAD83/TN)	Wellbore	STATE LA PLATA 5-65 13-15 3DH AWP
Facility	SEC.13-T05S-R65W		

WELLPATH COMPOSITION - Ref Wellbore: STATE LA PLATA 5-65 13-15 3DH AWP Ref Wellpath: STATE LA PLATA 5-65 13-15 3DH AWP			
Start MD [ft]	End MD [ft]	Positional Uncertainty Model	Log Name/Comment
26.20	2414.00	Gyrodata relative depth - Continuous gyro	GYRODATA SURFACE SURVEYS <89 - 2414>
2414.00	17583.00	Custom BHI AutoTrak Curve (IFR1, Short) (Rockies 0.03Gt model)	BHGE/ATC (IFR1,SHORT) MWD 8.5"-<2541-17583>
17583.00	17733.00	Blind Drilling (std)	Projection to bit

REFERENCE WELLPATH IDENTIFICATION			
Operator	Burlington Resources	Slot	SLOT#02 STATE LA PLATA 5-65 13-15 3DH (1280'FSL & 1728'FWL, SEC.13)
Area	COLORADO	Well	STATE LA PLATA 5-65 13-15 3DH
Field	ARAPAHOE COUNTY (NAD83/TN)	Wellbore	STATE LA PLATA 5-65 13-15 3DH AWP
Facility	SEC.13-T05S-R65W		

WELLPATH COMMENTS				
MD [ft]	Inclination [°]	Azimuth [°]	TVD [ft]	Comment
2414.00	0.560	190.970	2413.95	TIE INTO GYRO SURVEYS
17583.00	89.880	273.480	7991.65	LAST BHGE MWD SURVEYS
17733.00	89.880	273.480	7991.97	PROJECTION TO BIT