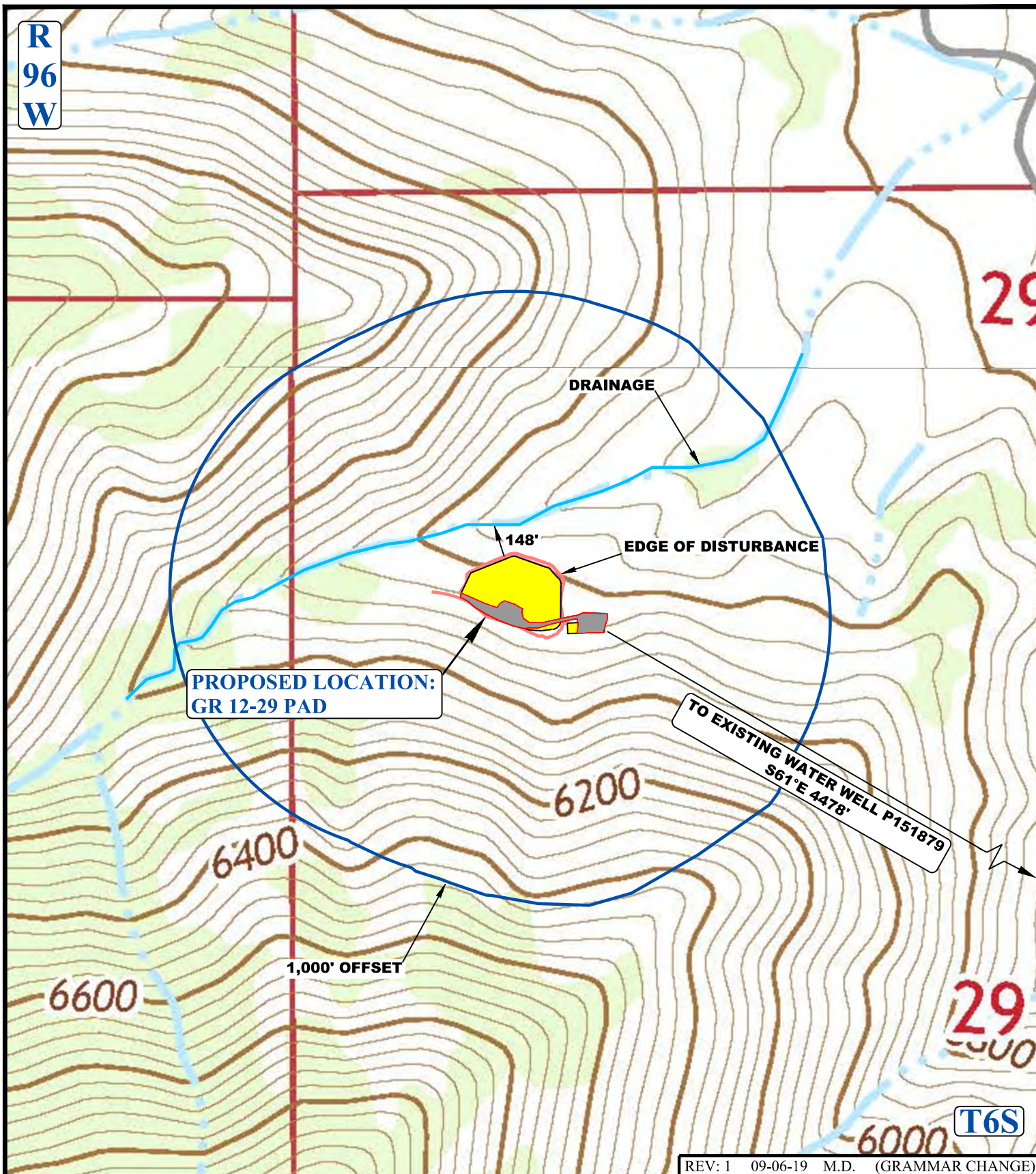


R  
96  
W



REV: 1 09-06-19 M.D. (GRAMMAR CHANGE)

**LEGEND:**

- EXISTING DRAINAGE
- 1000' OFFSET BOUNDARY
- EDGE OF DISTURBANCE
- FLOOD PLAINS



**UELS, LLC**  
Corporate Office \* 85 South 200 East  
Vernal, UT 84078 \* (435) 789-1017



**TEP Rocky Mountain LLC**

**GR 12-29 PAD**  
**LOT 3, SECTION 29, T6S, R96W, 6th P.M.**  
**GARFIELD COUNTY, COLORADO**

SURVEYED BY	B.H., J.F.	01-08-18	SCALE
DRAWN BY	A.A.	03-25-19	1 : 6,000
<b>HYDROLOGY MAP</b>		<b>PLAT 5D</b>	