


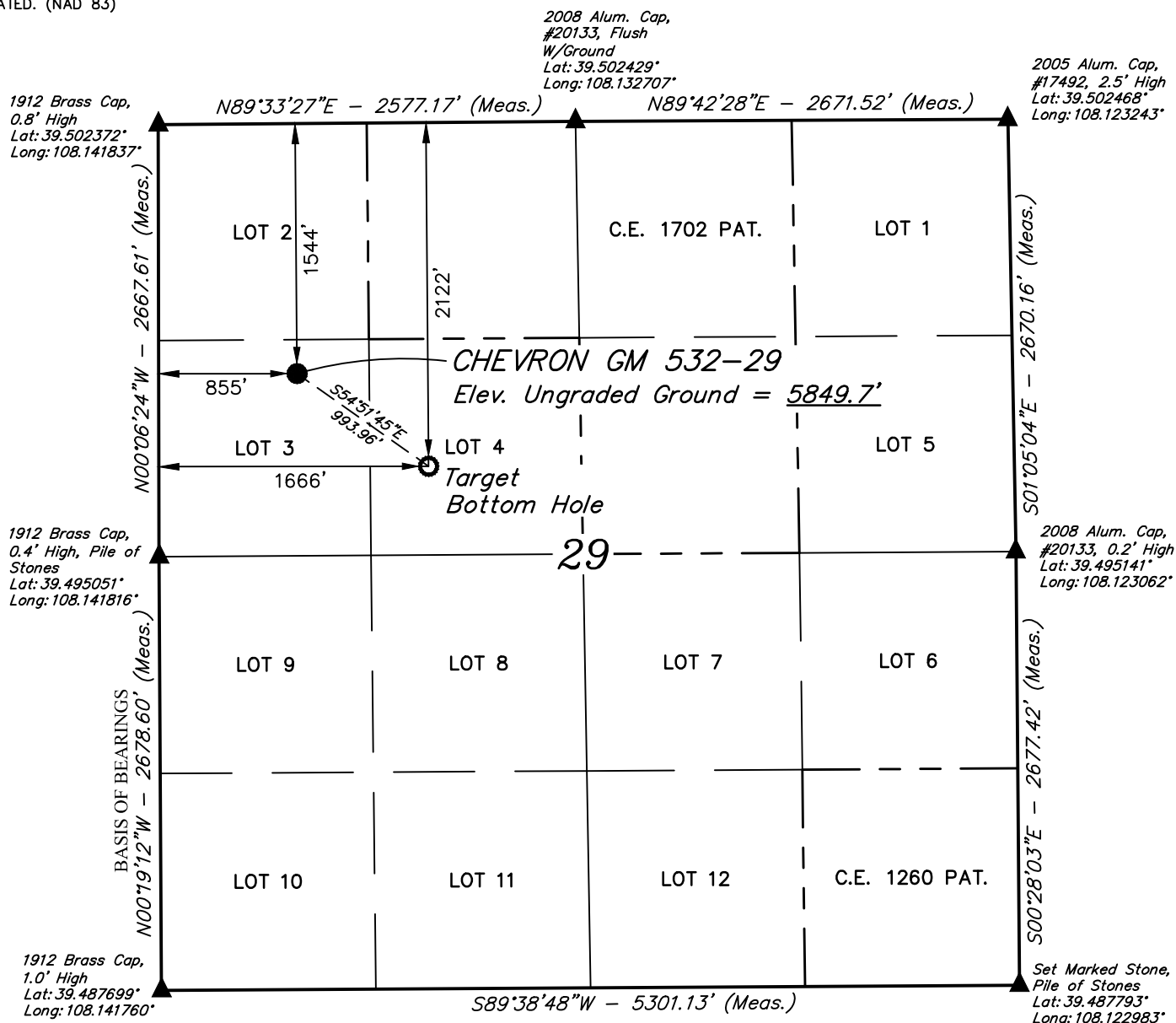


T6S, R96W, 6th P.M.

-  = PROPOSED WELLHEAD.
 = TARGET BOTTOM HOLE.
 = SECTION CORNERS
 LOCATED. (NAD 83)



- Distances referenced on plat to section lines are perpendicular.

A horizontal scale bar with alternating black and white segments. Above the bar, the markings 1000', 500', 0', 500', and 1000' are printed from left to right.

NAD 83 (SURFACE LOCATION)	NAD 83 (TARGET BOTTOM HOLE)
LATITUDE = 39°29'53.35" (39.498154)	LATITUDE = 39°29'47.70" (39.496584)
LONGITUDE = 108°08'19.67" (108.138798)	LONGITUDE = 108°08'09.30" (108.135918)
STATE PLANE NAD 83 (CO. CEN.)	STATE PLANE NAD 83 (CO. CEN.)
N: 1617145.40 E: 2255457.51	N: 1616550.43 E: 2256253.33

CERTIFICATE

THIS IS TO CERTIFY THAT THE ABOVE PLAT WAS PREPARED AND
LOCATION AS SHOWN WAS STAKED ON THE GROUND FROM FIELD NOTES
OF ACTUAL SURVEYS MADE BY ME OR UNDER MY SUPERVISION AND THAT
THE SAME ARE TRUE AND CORRECT TO THE BEST OF MY KNOWLEDGE AND
BELIEF.

PLAT #1

REGISTERED LAND SURVEYOR
REGISTRATION NO. 38130
STATE OF COLORADO
04-05-19

REV: 1 04-05-19 M.D. (NAME CHANGE)

BEARINGS ARE A BASED ASSUMPTION THAT THE WEST LINE OF THE SOUTHWEST 1/4 OF SECTION 29 BEARS N00°19'12"W. MONUMENTS DESCRIBED HEREON.

BENCH MARK (H79) LOCATED IN THE NE 1/4 OF SECTION 35, T4S, R98W, 6th P.M., TAKEN FROM THE BULL FORK QUADRANGLE, COLORADO, 7.5 MINUTE SERIES, (TOPOGRAPHIC MAP) PUBLISHED BY THE UNITED STATES DEPARTMENT OF THE INTERIOR, GEOLOGICAL SURVEY. SAID ELEVATION IS MARKED AS BEING 8535 FEET.



UELS, LLC
Corporate Office * 85 South 200 East
Vernal, UT 84078 * (435) 789-1017



TEP Rocky Mountain LLC

CHEVRON GM 532-29
LOT 3, SECTION 29, T6S, R96W, 6th P.M.
GARFIELD COUNTY, COLORADO

SURVEYED BY	DAYTON SLAUGH, B.H.	04-01-19	SCALE
DRAWN BY	M.D.	04-02-19	1" = 1000'

WELL LOCATION PLAT