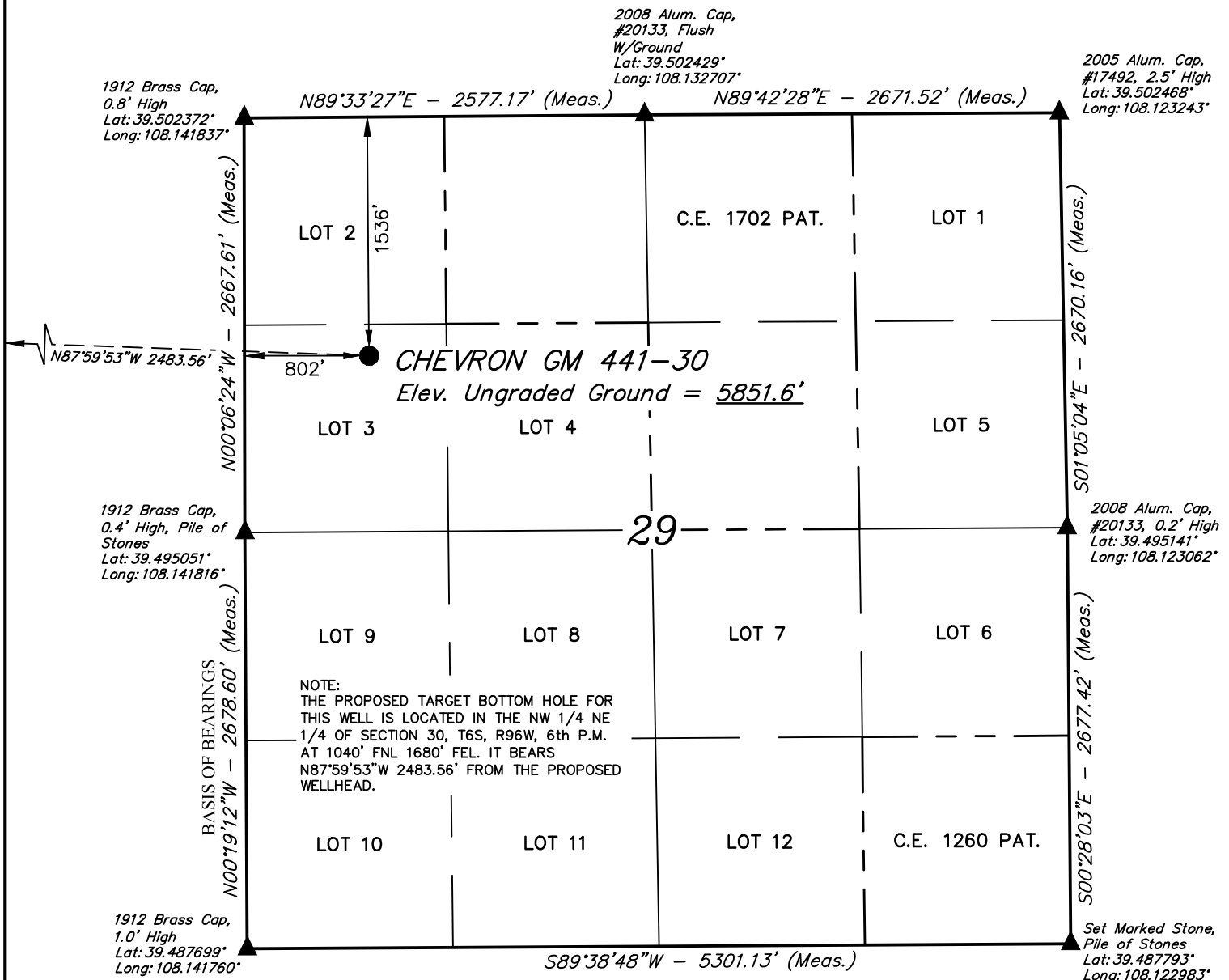


**LEGEND:**

● = PROPOSED WELLHEAD.

▲ = SECTION CORNERS  
LOCATED. (NAD 83)**T6S, R96W, 6th P.M.**

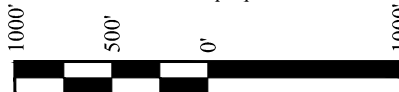
PDOP = 2.9

**NAD 83 (SURFACE LOCATION)**

LATITUDE = 39°29'53.43" (39.498175)  
LONGITUDE = 108°08'20.35" (108.138985)  
STATE PLANE NAD 83 (CO. CEN.)  
N: 1617154.81 E: 2255404.92

**NOTE:**

- Distances referenced on plat to section lines are perpendicular.



CERTIFICATE  
THIS IS TO CERTIFY THAT THE ABOVE PLAT WAS PREPARED AND THE LOCATION AS SHOWN WAS STAKED ON THE GROUND FROM FIELD NOTES OF ACTUAL SURVEYS MADE BY ME OR UNDER MY SUPERVISION AND THAT THE SAME ARE TRUE AND CORRECT TO THE BEST OF MY KNOWLEDGE AND BELIEF.

**PLAT #1**

REGISTERED LAND SURVEYOR  
REGISTRATION # 19180  
STATE OF COLORADO 04-05-19

REV: 1 04-05-19 M.D. (NAME CHANGE &amp; BHL MOVE)

**BASIS OF BEARINGS**

BEARINGS ARE A BASED ASSUMPTION THAT THE WEST LINE OF THE SOUTHWEST 1/4 OF SECTION 29 BEARS N00°19'12"W. MONUMENTS DESCRIBED HEREON.

**BASIS OF ELEVATION**

BENCH MARK (H79) LOCATED IN THE NE 1/4 OF SECTION 35, T4S, R98W, 6th P.M., TAKEN FROM THE BULL FORK QUADRANGLE, COLORADO, 7.5 MINUTE SERIES, (TOPOGRAPHIC MAP) PUBLISHED BY THE UNITED STATES DEPARTMENT OF THE INTERIOR, GEOLOGICAL SURVEY. SAID ELEVATION IS MARKED AS BEING 8535 FEET.

**UELS, LLC**

Corporate Office \* 85 South 200 East  
Vernal, UT 84078 \* (435) 789-1017

**TEP Rocky Mountain LLC**

**CHEVRON GM 441-30 (SURFACE LOCATION)**  
**LOT 3, SECTION 29, T6S, R96W, 6th P.M.**  
**GARFIELD COUNTY, COLORADO**

SURVEYED BY	DAYTON SLAUGH, B.H.	04-01-19	SCALE
DRAWN BY	M.D.	04-02-19	1" = 1000'

**WELL LOCATION PLAT**

*T6S, R96W, 6th P.M.*

- W.C. 1912 Brass  
Cap, 1.5' High  
Lat: 39.503325°  
Long: 108.159400°

C.C. 1912 Brass Cap,  
1.0' High, Mound of  
Stones  
Lat: 39.501269°  
Long: 108.141842°

NW Cor. Sec. 29  
1912 Brass Cap,  
0.8' High  
Lat: 39.502372°  
Long: 108.141837°

*S89°58'29"W - 4955.34' (True to C.C.)*  
*S89°58'29"W - 4957.68' (True to True)*

True Position  
Lat: 39.501269°  
Long: 108.141834°

True Position  
Lat: 39.501256°  
Long: 108.159398°

CHEVRON GM 441-30  
Target Bottom Hole

NOTE:  
THE PROPOSED TARGET BOTTOM HOLE  
BEARS N87°59'53"W 2483.56' FROM THE  
PROPOSED WELLHEAD WHICH IS LOCATED IN  
LOT 3 OF SECTION 29, T6S, R96W, 6th P.M.  
AT 1536' ENL 802' FWL

1912 Brass Cap,  
1.3' High  
Lat: 39.494015°  
Long: 108.159390°

1912 Brass Cap,  
Flush W/Ground  
Lat: 39.486777°  
Long: 108.159385°

True Position  
Lat: 39.486699°  
Long: 108.149889°

W.C. "190" Brass  
Cap, 1.3' High,  
Lat: 39.486715°  
Long: 108.147923°

W 1/4 Cor. Sec. 29  
1912 Brass Cap,  
0.4' High, Pile of  
Stones  
Lat: 39.495051°  
Long: 108.141816°

SW Cor. Sec. 29  
1912 Brass Cap,  
1.0' High  
Lat: 39.487699°  
Long: 108.141760°

C.C. 1902 Brass  
Cap, 0.7' High,  
Lat: 39.486767°  
Long: 108.141743°

$R$	$R$
$97$	$96$
$W$	$W$

- Distances referenced on plat to section lines are perpendicular.

<b>NAD 83 (TARGET BOTTOM HOLE)</b>
LATITUDE = 39°29'54.28" (39.498411)
LONGITUDE = 108°08'52.00" (108.147778)
<b>STATE PLANE NAD 83 (CO. CEN.)</b>
N: 1617312.74 E: 2252927.17

THIS IS TO CERTIFY THAT THE ABOVE PLAT WAS PREPARED AND  
LOCATION AS SHOWN WAS STAKED ON THE GROUND FROM FIELD NOTES  
OF ACTUAL SURVEYS MADE BY ME OR UNDER MY SUPERVISION AND THAT  
THE SAME ARE TRUE AND CORRECT TO THE BEST OF MY KNOWLEDGE AND  
BELIEF.

REGISTERED LAND SURVEYOR  
REGISTRATION NO. 38130  
STATE OF COLORADO

PLAT #1

REV: 2 05-14-19 M.D. (ADD DIM. TO LEASE BOUNDARY)

## BASIS OF BEARINGS

BEARINGS ARE A BASED ASSUMPTION THAT THE WEST LINE OF THE SOUTHWEST 1/4 OF SECTION 29 BEARS N00°19'12"W. MONUMENTS DESCRIBED HEREON.

## BASIS OF ELEVATION

BENCH MARK (H79) LOCATED IN THE NE 1/4 OF SECTION 35, T4S, R98W, 6th P.M., TAKEN FROM THE BULL FORK QUADRANGLE, COLORADO, 7.5 MINUTE SERIES, (TOPOGRAPHIC MAP) PUBLISHED BY THE UNITED STATES DEPARTMENT OF THE INTERIOR, GEOLOGICAL SURVEY. SAID ELEVATION IS MARKED AS BEING 8535 FEET.

**UELS, LLC**

**Corporate Office \* 85 South 200 East  
Vernal, UT 84078 \* (435) 789-1017**

**TEP Rocky Mountain LLC**

**CHEVRON GM 441-30 (TARGET BOTTOM HOLE)  
NW 1/4 NE 1/4, SECTION 30, T6S, R96W, 6th P.M.  
GARFIELD COUNTY, COLORADO**

<b>SURVEYED BY</b>	DAYTON SLAUGH, B.H.	04-01-19	<b>SCALE</b>
<b>DRAWN BY</b>	M.D.	04-01-19	1" = 1000'

## WELL LOCATION PLAT

