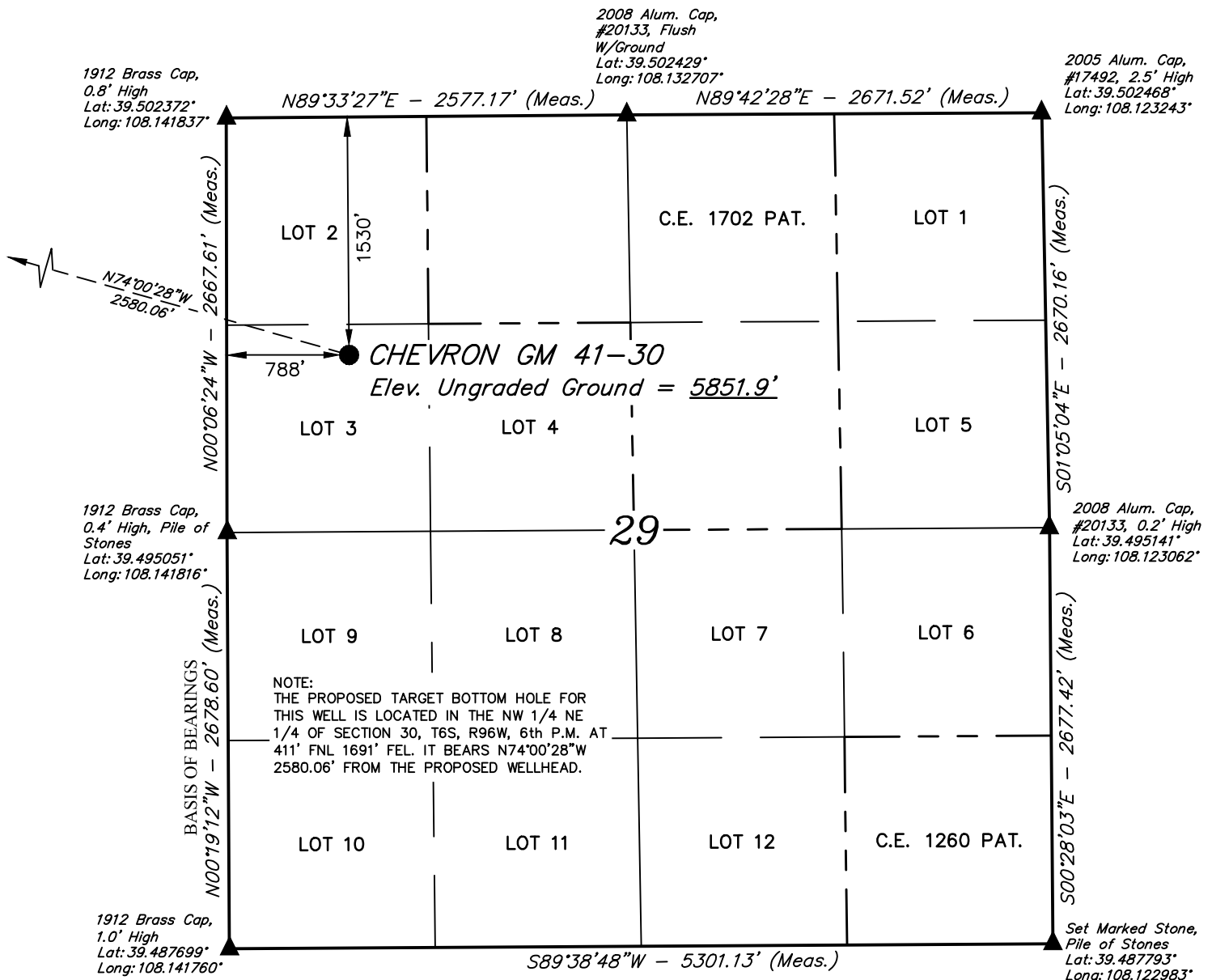


# LEGEND:

- = PROPOSED WELLHEAD.
- ▲ = SECTION CORNERS LOCATED. (NAD 83)

T6S, R96W, 6th P.M.



PDOP = 3.2

## NAD 83 (SURFACE LOCATION)

LATITUDE = 39°29'53.48" (39.498189)  
 LONGITUDE = 108°08'20.53" (108.139035)  
 STATE PLANE NAD 83 (CO. CEN.)  
 N: 1617160.17 E: 2255390.91

## NOTE:

- Distances referenced on plat to section lines are perpendicular.



CERTIFICATE OF ACCURACY  
 THIS IS TO CERTIFY THAT THE ABOVE PLAT WAS PREPARED AND THE LOCATION AS SHOWN WAS STAKED ON THE GROUND FROM FIELD NOTES OF ACTUAL SURVEYS MADE BY ME OR UNDER MY SUPERVISION AND THAT THE SAME ARE TRUE AND CORRECT TO THE BEST OF MY KNOWLEDGE AND BELIEF.

PLAT #1

REGISTERED LAND SURVEYOR  
 REGISTRATION #19180  
 STATE OF COLORADO 04-05-19

REV: 1 04-05-19 M.D. (NAME CHANGE & BHL MOVE)

## BASIS OF BEARINGS

BEARINGS ARE A BASED ASSUMPTION THAT THE WEST LINE OF THE SOUTHWEST 1/4 OF SECTION 29 BEARS N00°19'12"W. MONUMENTS DESCRIBED HEREON.

## BASIS OF ELEVATION

BENCH MARK (H79) LOCATED IN THE NE 1/4 OF SECTION 35, T4S, R98W, 6th P.M., TAKEN FROM THE BULL FORK QUADRANGLE, COLORADO, 7.5 MINUTE SERIES, (TOPOGRAPHIC MAP) PUBLISHED BY THE UNITED STATES DEPARTMENT OF THE INTERIOR, GEOLOGICAL SURVEY. SAID ELEVATION IS MARKED AS BEING 8535 FEET.

UELS, LLC

Corporate Office \* 85 South 200 East  
 Vernal, UT 84078 \* (435) 789-1017



TEP Rocky Mountain LLC

CHEVRON GM 41-30 (SURFACE LOCATION)  
 LOT 3, SECTION 29, T6S, R96W, 6th P.M.  
 GARFIELD COUNTY, COLORADO

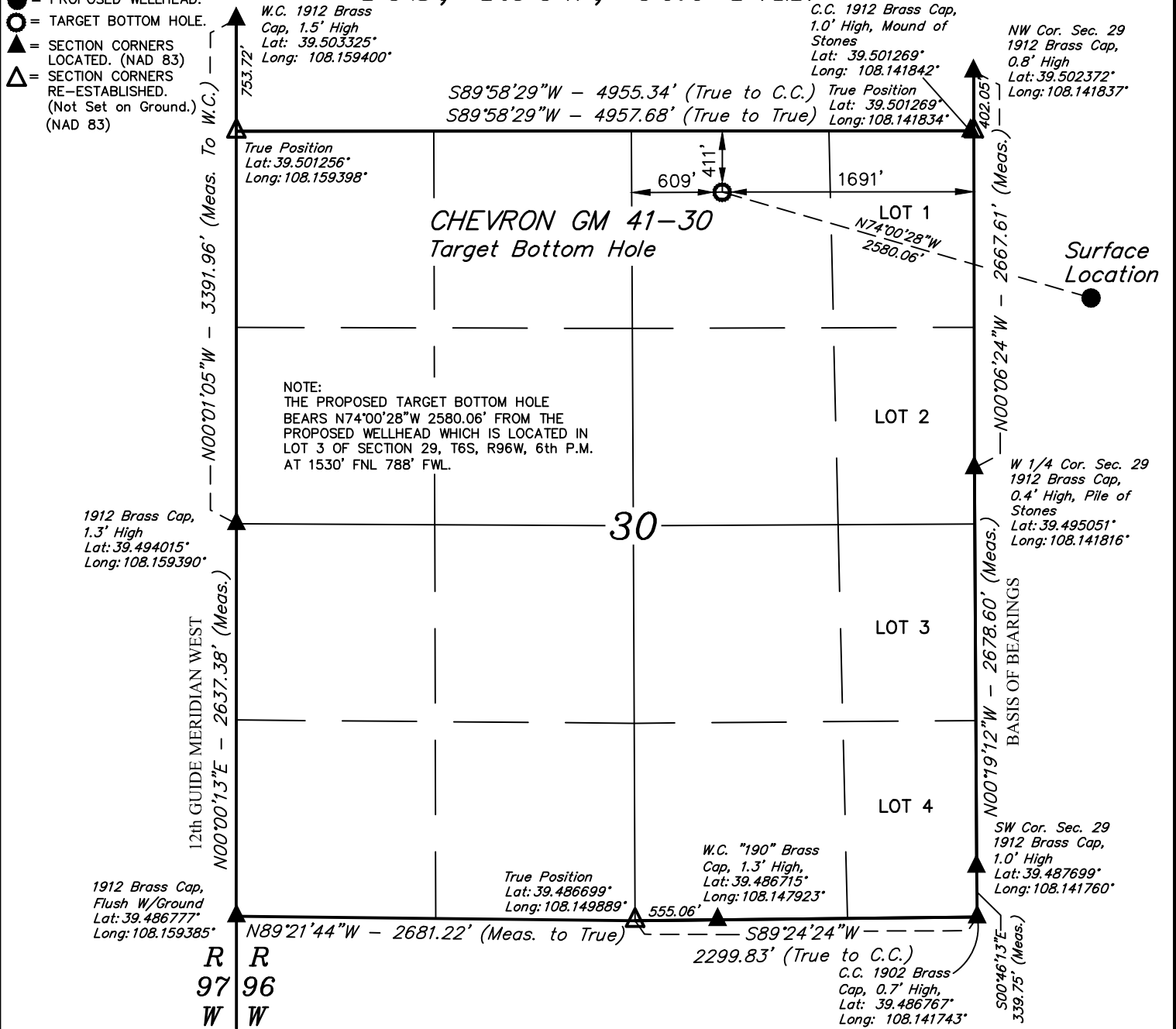
SURVEYED BY	DAYTON SLAUGH, B.H.	04-01-19	SCALE
DRAWN BY	M.D.	04-02-19	1" = 1000'

WELL LOCATION PLAT

# LEGEND:

- = PROPOSED WELLHEAD.
- = TARGET BOTTOM HOLE.
- ▲ = SECTION CORNERS LOCATED. (NAD 83)
- △ = SECTION CORNERS RE-ESTABLISHED. (Not Set on Ground.) (NAD 83)

T6S, R96W, 6th P.M.



## NOTE:

- Distances referenced on plat to section lines are perpendicular.

NAD 83 (TARGET BOTTOM HOLE)
LATITUDE = 39°30'00.49" (39.500137)
LONGITUDE = 108°08'52.16" (108.147823)
STATE PLANE NAD 83 (CO. CEN.)
N: 1617941.65 E: 2252932.91



PLAT #1

REV: 1 04-05-19 M.D. (NAME CHANGE & BHL MOVE)

## CERTIFICATE

THIS IS TO CERTIFY THAT THE ABOVE PLAT WAS PREPARED AND LOCATION AS SHOWN WAS STAKED ON THE GROUND FROM FIELD NOTES OF ACTUAL SURVEYS MADE BY ME OR UNDER MY SUPERVISION AND THAT THE SAME ARE TRUE AND CORRECT TO THE BEST OF MY KNOWLEDGE AND BELIEF.

REGISTERED LAND SURVEYOR  
REGISTRATION NO. 198180  
STATE OF COLORADO 04-05-19

## BASIS OF BEARINGS

BEARINGS ARE A BASED ASSUMPTION THAT THE WEST LINE OF THE SOUTHWEST 1/4 OF SECTION 29 BEARS N00°19'12"W. MONUMENTS DESCRIBED HEREON.

## BASIS OF ELEVATION

BENCH MARK (H79) LOCATED IN THE NE 1/4 OF SECTION 35, T4S, R98W, 6th P.M., TAKEN FROM THE BULL FORK QUADRANGLE, COLORADO, 7.5 MINUTE SERIES, (TOPOGRAPHIC MAP) PUBLISHED BY THE UNITED STATES DEPARTMENT OF THE INTERIOR, GEOLOGICAL SURVEY. SAID ELEVATION IS MARKED AS BEING 8535 FEET.



**UELS, LLC**  
Corporate Office \* 85 South 200 East  
Vernal, UT 84078 \* (435) 789-1017



## TEP Rocky Mountain LLC

**CHEVRON GM 41-30 (TARGET BOTTOM HOLE)**  
NW 1/4 NE 1/4, SECTION 30, T6S, R96W, 6th P.M.  
GARFIELD COUNTY, COLORADO

SURVEYED BY	DAYTON SLAUGH, B.H.	04-01-19	SCALE
DRAWN BY	M.D.	04-01-19	1" = 1000'

## WELL LOCATION PLAT