


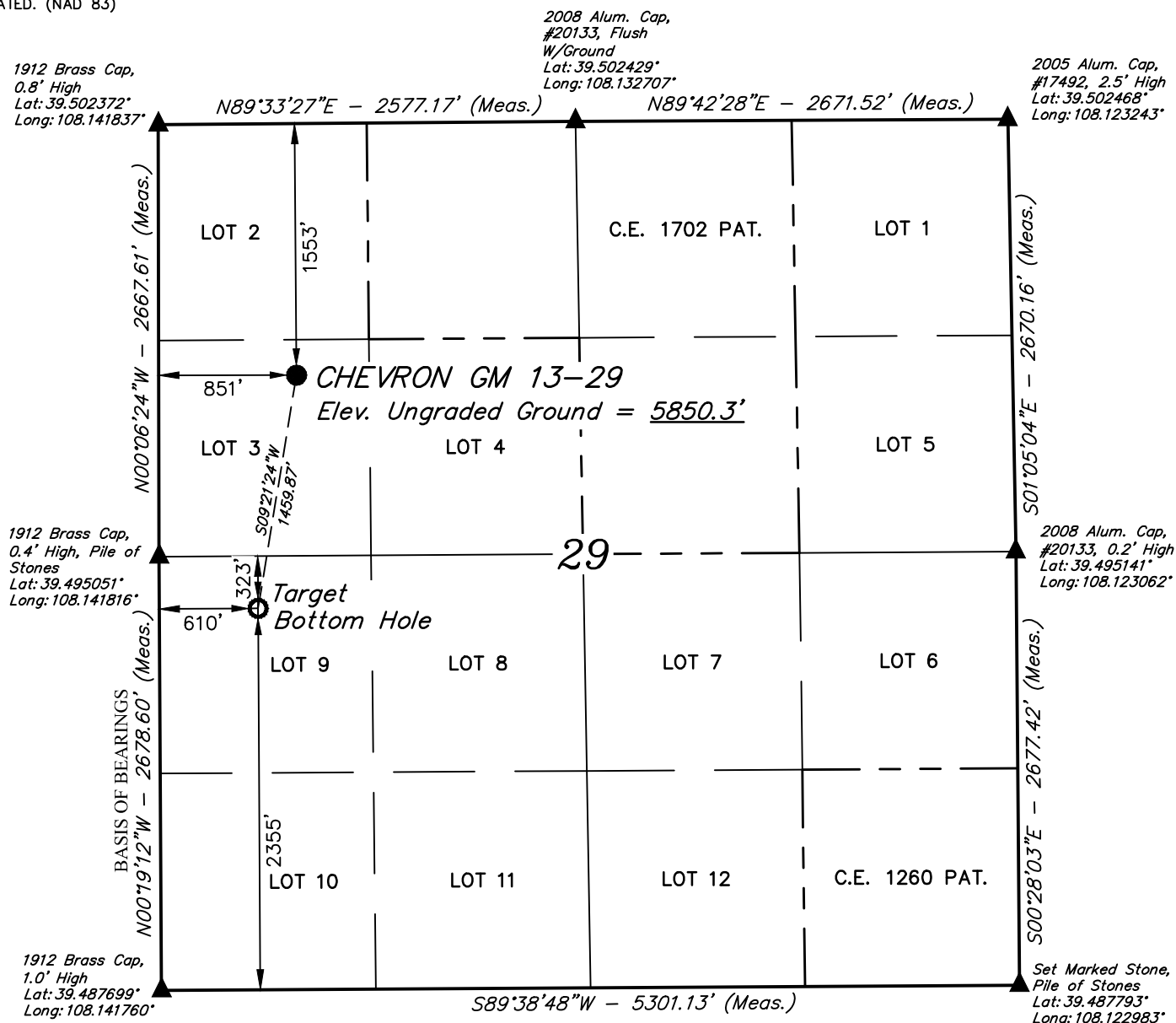


*T6S, R96W, 6th P.M.*

-  = PROPOSED WELLHEAD.  
 = TARGET BOTTOM HOLE.  
 = SECTION CORNERS  
 LOCATED. (NAD 83)



- Distances referenced on plat to section lines are perpendicular.

<b>NAD 83 (SURFACE LOCATION)</b>	<b>NAD 83 (TARGET BOTTOM HOLE)</b>
LATITUDE = 39°29'53.26" (39.498128)	LATITUDE = 39°29'39.03" (39.494174)
LONGITUDE = 108°08'19.71" (108.138809)	LONGITUDE = 108°08'22.73" (108.139649)
<b>STATE PLANE NAD 83 (CO. CEN.)</b>	<b>STATE PLANE NAD 83 (CO. CEN.)</b>
N: 1617136.07 E: 2255453.94	N: 1615703.48 E: 2255175.43

THIS IS TO CERTIFY THAT THE ABOVE PLAT WAS PREPARED AND  
LOCATION AS SHOWN WAS STAKED ON THE GROUND FROM FIELD NOTES  
OF ACTUAL SURVEYS MADE BY ME OR UNDER MY SUPERVISION AND THAT  
THE SAME ARE TRUE AND CORRECT TO THE BEST OF MY KNOWLEDGE AND  
BELIEF.

# PLAT #1

REGISTERED LAND SURVEYOR  
REGISTRATION NO. 38130  
STATE OF COLORADO  
04-05-19

REV: 1    04-05-19    M.D.    (NAME CHANGE)

BEARINGS ARE A BASED ASSUMPTION THAT THE WEST LINE OF THE SOUTHWEST 1/4 OF SECTION 29 BEARS N00°19'12"W. MONUMENTS DESCRIBED HEREON.

BENCH MARK (H79) LOCATED IN THE NE 1/4 OF SECTION 35, T4S, R98W, 6th P.M., TAKEN FROM THE BULL FORK QUADRANGLE, COLORADO, 7.5 MINUTE SERIES. (TOPOGRAPHIC MAP) PUBLISHED BY THE UNITED STATES DEPARTMENT OF THE INTERIOR, GEOLOGICAL SURVEY. SAID ELEVATION IS MARKED AS BEING 8535 FEET.



**UELS, LLC**  
Corporate Office \* 85 South 200 East  
Vernal, UT 84078 \* (435) 789-1017



**TEP Rocky Mountain LLC**

**CHEVRON GM 13-29**  
**LOT 3, SECTION 29, T6S, R96W, 6th P.M.**  
**GARFIELD COUNTY, COLORADO**

<b>SURVEYED BY</b>	DAYTON SLAUGH, B.H.	04-01-19	<b>SCALE</b>
<b>DRAWN BY</b>	M.D.	04-02-19	1" = 1000'

## WELL LOCATION PLAT