

2019-02-26 10:00	1	15294.00	Oil Based Mud	9.5	16	N/A	N/A	79.8/20.2	Active Pit	45000	0.00
2019-02-26 22:00	1	17277.00	Oil Based Mud	9.4	14	N/A	N/A	81/19	Active Pit	43000	0.00

Equipment and Service Data

Run No.	Tool	Serial Number	Measurement	Sensor Offset (ft)	Bit Offset (ft)	Max O.D. (in)	Min I.D. (in)
1	AutoTrak Curve Steering Unit	14381507	Near Bit VSS	5.93	6.93	7.000	4.330
1	AutoTrak Curve Steering Unit	14381507	Near Bit Inclination	5.93	6.93	7.000	4.330
1	AutoTrak Curve MWD	14179564	Gamma (single)	2.74	13.10	7.000	3.250
1	AutoTrak Curve MWD	14179564	Directional (mag)	12.26	22.62	7.000	3.250

Service and Tool Mnemonics

Mnemonic	Name	Description
ATC SU	AutoTrak Curve SU	Auto Trak Curve Steering Unit
ATC MWD	AutoTrak Curve MWD	Auto Trak Curve MWD
ATC LCPM	AutoTrak Curve LCPM	Auto Trak Curve LCPM

Comments



- Depth measurements were obtained from a depth control system not supplied or operated by Baker Hughes, a GE Company (BHGE). Due to the lack of control by BHGE logging engineers, depth calibrations and measurements could not be independently verified
- BHGE LWD run 1 utilized 6.75 inch NaviGamma Services (Gamma Ray and Directional) behind a 8.5 inch bit and Rotary steerable assembly from 2250 to 17827 feet MD (2250 to 7709 feet TVD).

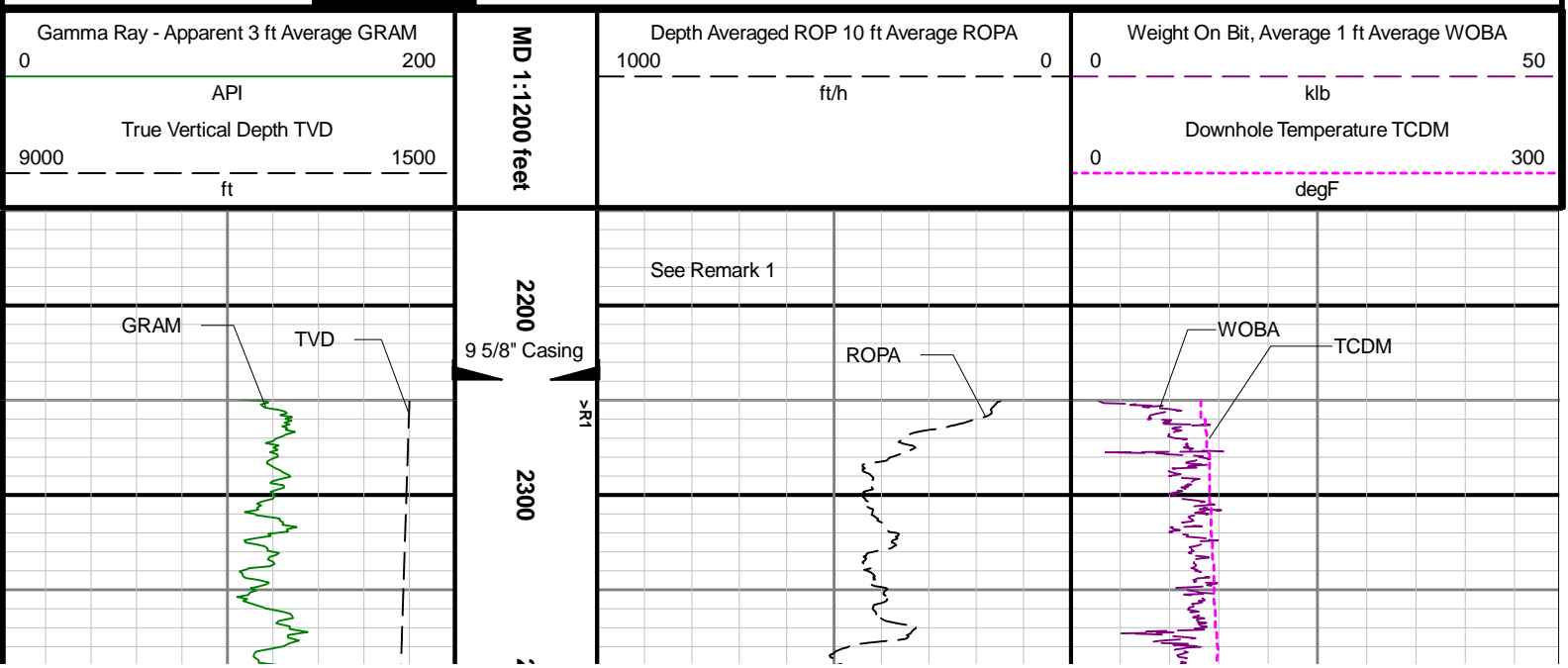
Remarks

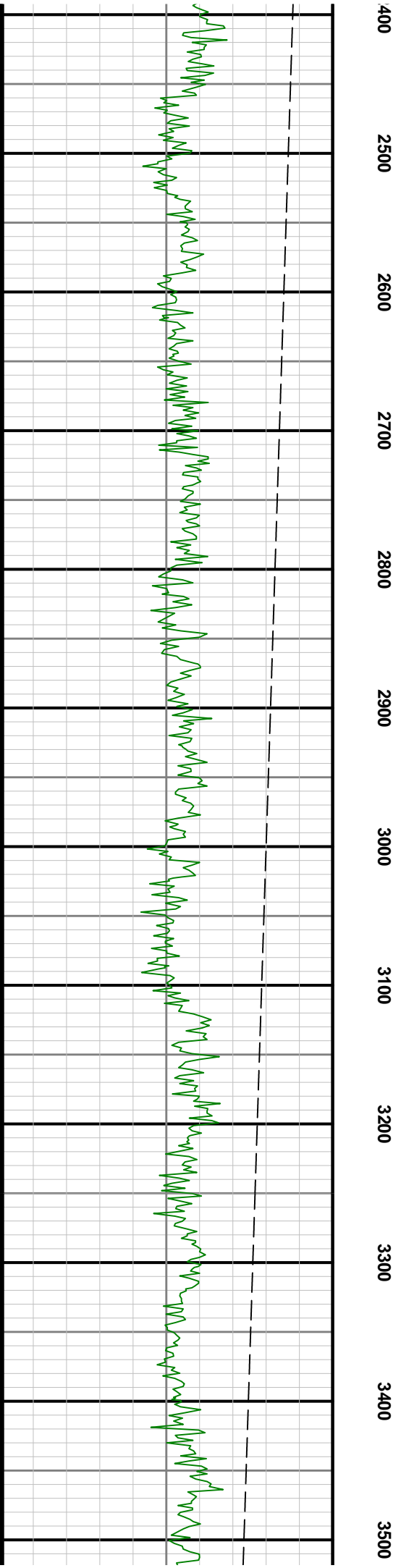
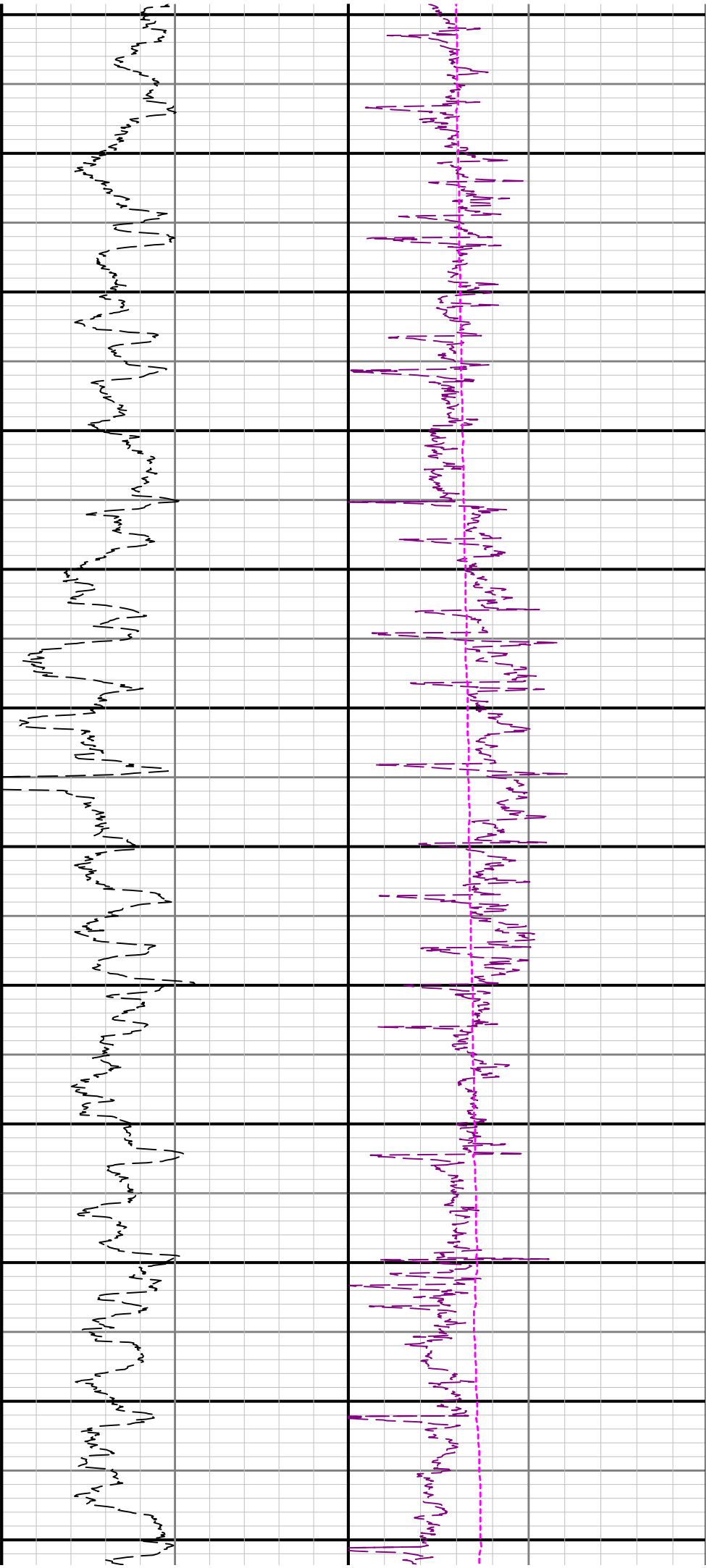
Number	Measured Depth (ft)	Hole Section (in)	Run No.	Remark
1	2250.00	8.500	1	BHGE logging services began at 2250 feet MD (2250 feet TVD) per customer request.
2	5590.00	8.500	1	The Gamma Ray (GRAM), Rate of Penetration (ROP) and Weight on Bit (WOBA) Data in the interval from 5590 to 5610 feet MD (5589 to 5609 feet TVD) are missing due to issue with third party depth tracking system.
3	17827.00	8.500	1	The interval from 17814 to 17827 feet MD (7709 feet TVD) was not logged due to sensor to bit offset at TD.

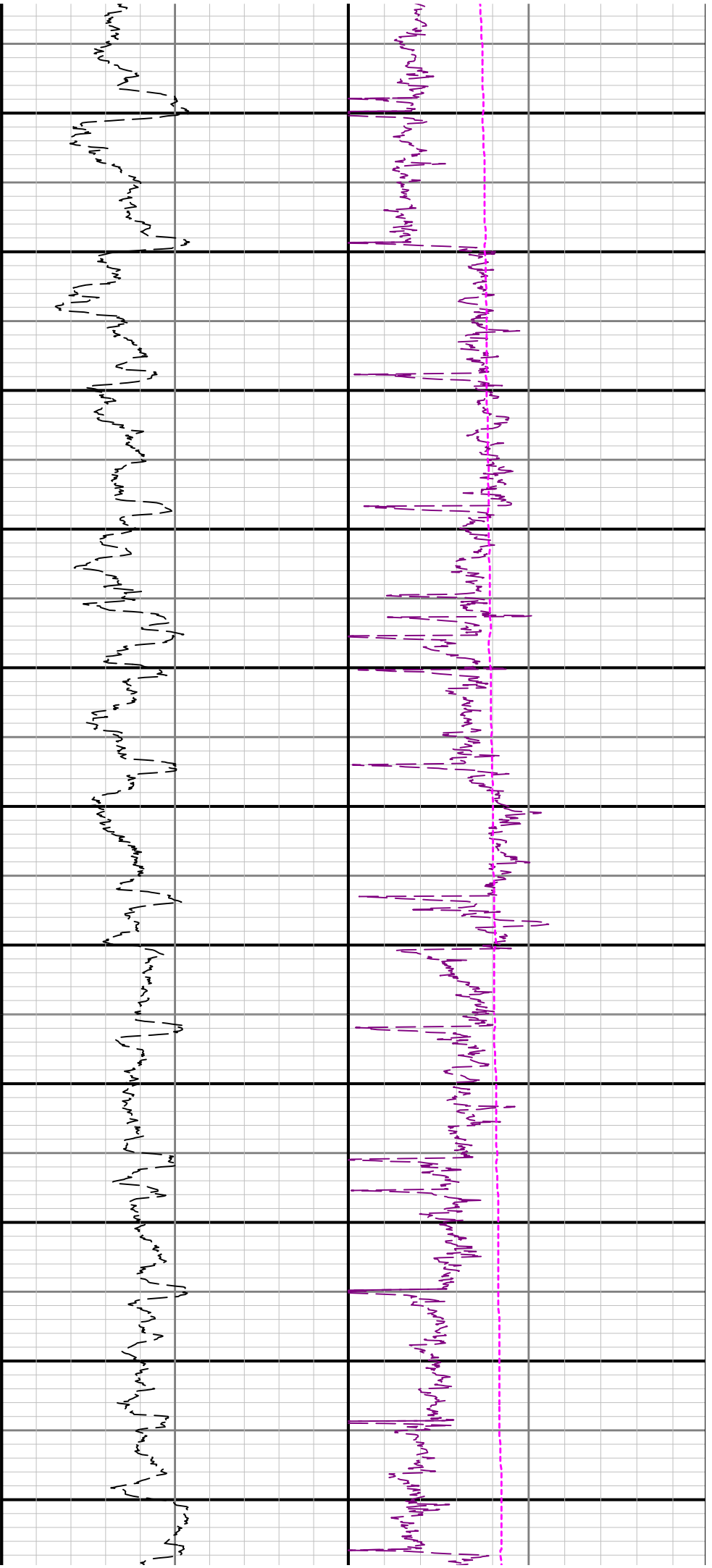
Curve Mnemonics

Presented Curves	Description	Units
ROPA	Depth Averaged ROP 10 ft Average	ft/h
TVD	True Vertical Depth	ft
WOBA	Weight On Bit, Average 1 ft Average	klb
GRAM	Gamma Ray - Apparent - Memory 3 ft Average	API
TCDM	Downhole Temperature	degF

 	Company	ConocoPhillips			
	Well	Prosper_Farms_4-65_11-12_3AH			
	Interval	Date From:	2019-02-23 03:56	Top:	2250.00 ft
		Date To:	2019-02-27 21:35	Bottom:	17827.00 ft
	Created	2019-02-27 21:29:33			







3600 3700 3800 3900 4000 4100 4200 4300 4400 4500 4600

