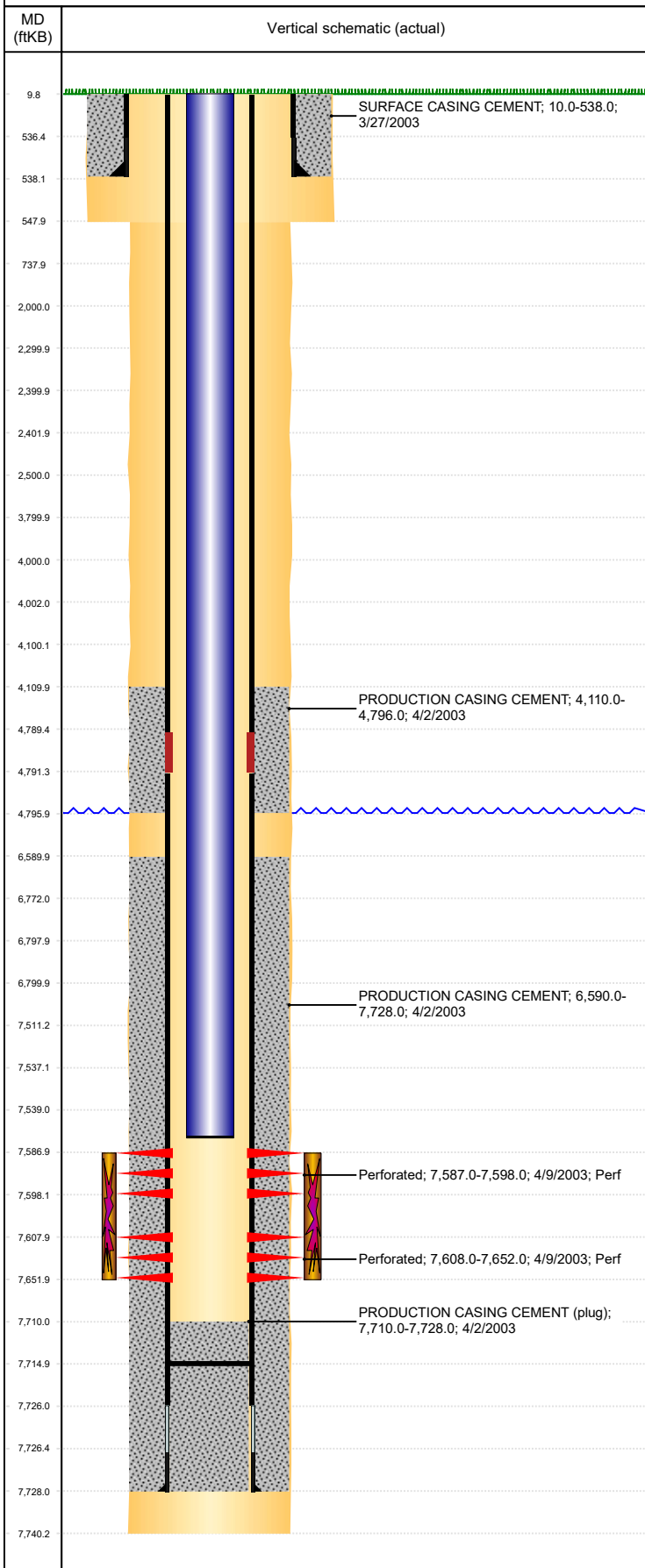


Well Name: BB DRAW H03-06J1

VERTICAL, ORIGINAL HOLE, 10/21/2019 3:14:47 PM



Well Header										
API 05-123-21383			Business Unit DJ BASIN			District 15		Well Config VERTICAL		
KB - GL / MSL (ft... 10.00		Spud Date 3/26/2003		P & A Date		Well Production Status PR			SoRT No	
Comment DV TOOL @ +/- 4790'; DRILLED OUT 4/9/2003										
Surface Location (Congressional)										
Qtr 3 SE	Qtr 4 NW	Section 3	Twonshp 3	Twonsh... N	Range 65	Rng E/... W	Actual Latitude (°) 40.25652000	Actual Longitude (°) -104.65117797		
Wellbore Sections										
Section Des			Size (in)			Act Top, MD (ftKB)		Act Btm, MD (ftKB)		
SURFACE			12 1/4			10		548		
PRODUCTION			7 7/8			548		7,740		
Casing Strings										
Csg Des			Run Date		OD (in)	Wt/Len (lb/ft)	Grade	Top, MD (ftKB)	MD (ftKB)	
Surface			3/27/2003		8 5/8	24.00	J-55	10.0	538.0	
Production			4/2/2003		4 1/2	11.60	M-80	10.0	7,728.0	
Cement										
Des					Start Date		Top (ftKB)		Btm (ftKB)	
SURFACE CASING CEMENT					3/27/2003		10.0		538.0	
PRODUCTION CASING CEMENT					4/2/2003		4,110.0		4,796.0	
PRODUCTION CASING CEMENT					4/2/2003		6,590.0		7,728.0	
Zone Statuses										
Zone Name		Status Date	Status	Fluid Type	Job				Prod Method	
J SAND		4/17/2003	PR	Oil					Flowing	
J SAND		5/6/2010	PR	Water					Flowing	
Perforation Data										
Linked Zone			Bnch/Stg	Entered Shot Total	Top (ftKB)		Btm (ftKB)		Date	
J SAND, ORIGINAL HOLE				22	7,587.00		7,598.00		4/9/2003	
J SAND, ORIGINAL HOLE				88	7,608.00		7,652.00		4/9/2003	
Stimulation Intervals										
Zone				Start Date		Top (ftKB)		Btm (ftKB)		
J SAND, ORIGINAL HOLE				4/14/2003		7,587.0		7,652.0		
Other In Hole										
Run Date		Des				OD (in)	Top (ftKB)	Btm (ftKB)		
1/22/2019		Plunger Lift				1.9				
Logs										
Date		Type					Top, MD (ftKB)	Btm, MD (ftKB)		
4/1/2003		INDUCTION					538.0	7,739.0		
4/9/2003		CBL/CCL/GR					3,950.0	7,693.0		
Plug Back Total Depths										
Date		Type		Com					Depth (ftKB)	
4/2/2003		FLOAT SHOE		FLOAT SHOE					7,710.0	
4/3/2012		FILL		ABLE TO BAIL DN TO PBTD W/250JTS 13' OUT					7,714.9	