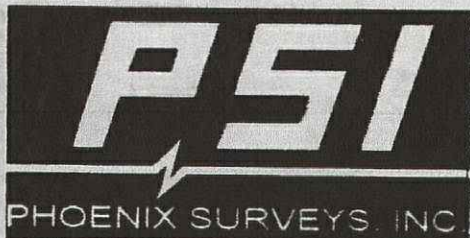


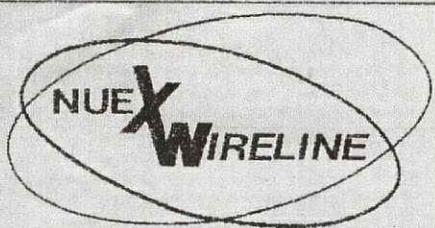
Code: 6631-6639 (3 s/r)



COMPENSATED DENSITY COMPENSATED NEUTRON DUAL INDUCTION

Company Well Field County State	Company	Petroleum Development Corporation		
	Well	Wells Ranch 23-2		
	Field	Wattenberg		
	County	Weld	State	Colorado
	Location	1975' FSL & 1977' FWL NE SW Sec - 2, Twp - 5N, Rge - 63W		Other Services None
	Permanent Datum	GL	Elevation	4690
	Log Measured From	KB		K.B. 4700
	Drilling Measured From	KB		D.F. 4699 G.L. 4690
	Date	April 25, 2005		
	Run Number	1		
	Depth Driller	6816		
	Depth Logger	6818		
	Bottom Logged Interval	6818		
	Top Log Interval	Casing		
	Casing Driller	410		
	Casing Logger	410		
	Bit Size	7-7/8"		
	Type Fluid in Hole	Chem Gel		
	Density / Viscosity	8.9 / 55		
	pH / Fluid Loss	9.0 / 10.8		
	Source of Sample	Flowline		
	Rm @ Meas. Temp	3.22 @ 72° F		
	Rmf @ Meas. Temp	2.41 @ 72° F		
	Rmc @ Meas. Temp	4.07 @ 72° F		
	Source of Rmf / Rmc	Measure / Calc		
	Rm @ BHT	1.11 @ 201° F		
	Time Circulation Stopped	10:30		
	Time Logger on Bottom	16:00		
	Maximum Recorded Temperature	201° F		
	Equipment Number	4078		
	Location	Brighton, CO		
	Recorded By	Peter Dhaliwal		
	Witnessed By	Nathan Anderson		

<<< Attach File >>>



GAMMA RAY / CCL CEMENT BOND VDL

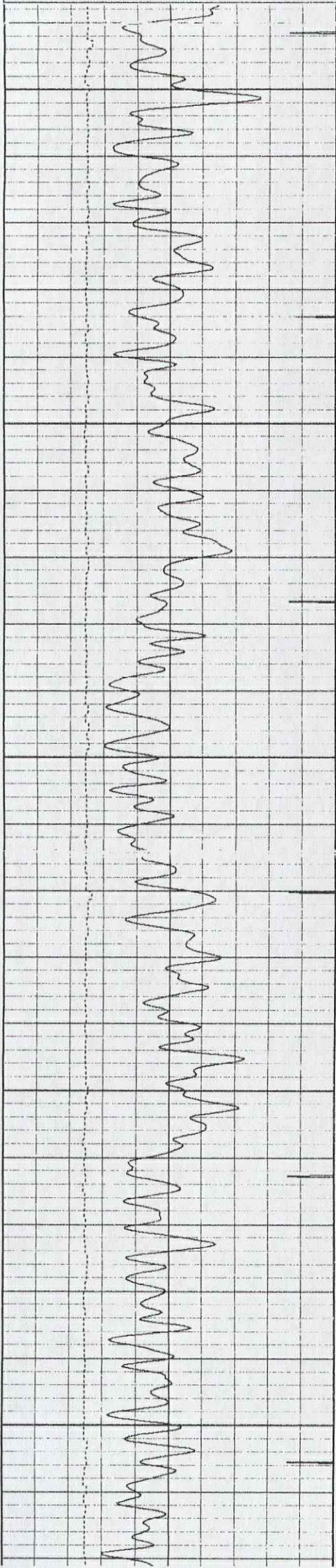
Petroleum Development Corporation Wells Ranch 23-2 Wattenberg Weld Colo.	Company	Petroleum Development Corporation								
	Well	Wells Ranch 23-2								
	Field	Wattenberg								
	County	Weld	State	Colo.						
	Location:	1975' FSL & 1977' FWL NE / SW SEC 2 TWP 5N RGE 63W				Other Services	perforate			
Company	Well	Field	County	State	Permanent Datum	GL	Elevation	4690'	Elevation	K.B. 4700'
					Log Measured From	KB				D.F. 4699'
					Drilling Measured From	KB				G.L. 4690'
Date	May 2, 2005									
Run Number	one									
Depth Driller	6816'									
Depth Logger	6765'									
Bottom Logged Interval	6762'-5850'									
Top Log Interval	3900'-2540'									
Open Hole Size										
Type Fluid	water									
Density / Viscosity										
Max. Recorded Temp	224 deg. F									
Estimated Cement Top										
Time Well Ready										
Time Logger on Bottom										
Equipment Number	T2 TEK2/TITAN1.TEKCCL1									
Location	WCR61+WCR64 E3, SE.8mi., E.1 S 5 E.4 S 5 NE 1 into.									
Recorded By	R M Meisner									
Witnessed By	Jesse Silva									
Borehole Record					Tubing Record					
Run Number	Bit	From	To	Size	Weight	From	To			
Casing Record	Size	Wgt/Ft	Top	Bottom						
Surface String										
Prot. String										
Production String	4.5"									
Liner										

<<< Borehole >>>

Database File: pdcwr232.db
Dataset Pathname: pass2
Presentation Format: bond
Dataset Creation: Mon May 02 13:20:13 2005 by Log 6.2_B4
Charted by: Depth in Feet scaled 1:240

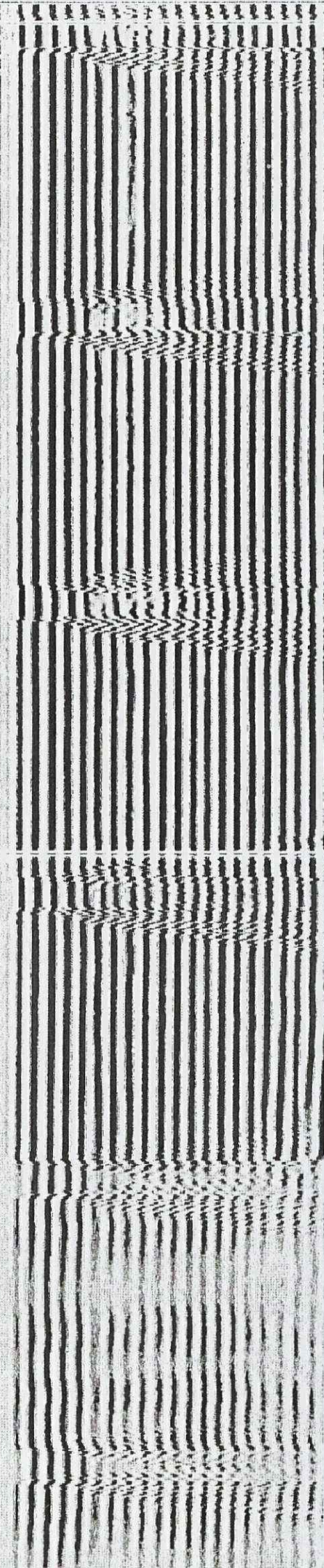
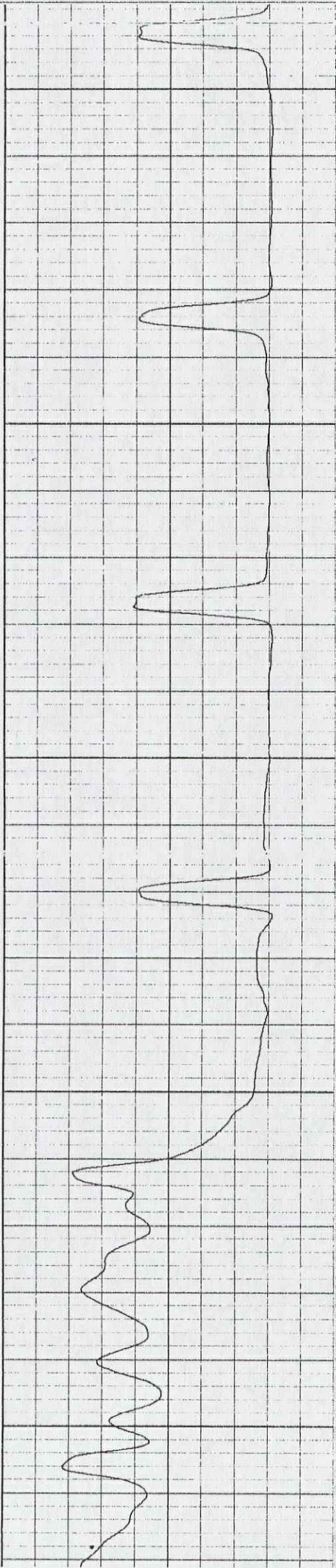
9	CCL	0
30	Gamma Ray (GAPI)	130
30	Line Speed (ft/min)	230

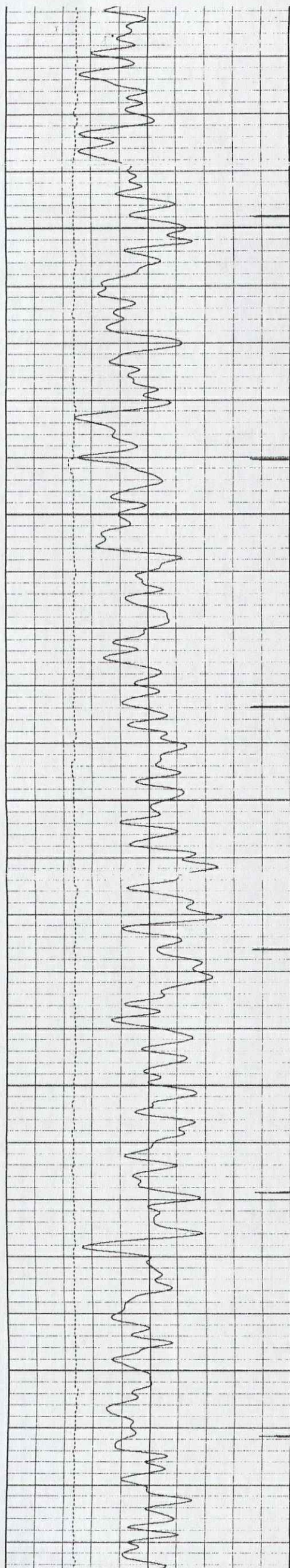
0	Amplitude (Pipe Bond) (mV)	100	300	VDL (Formation Bond)	1200
0	Amplified Amplitude (mV)	10			



2600

2700

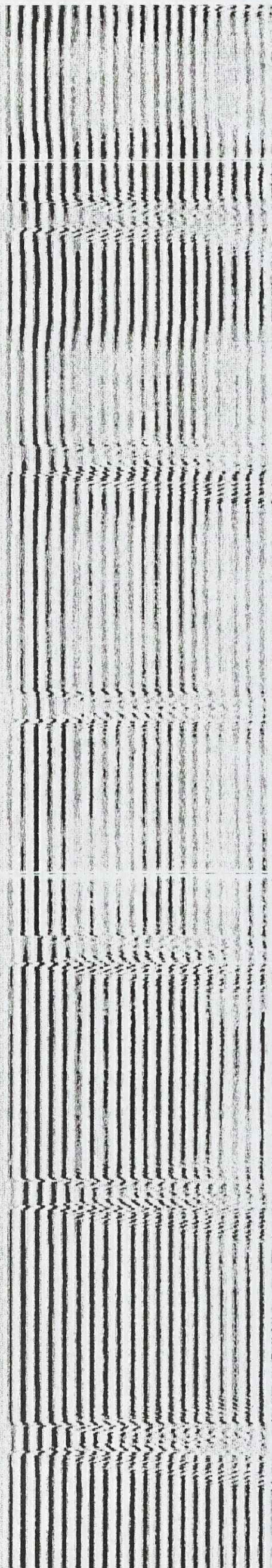
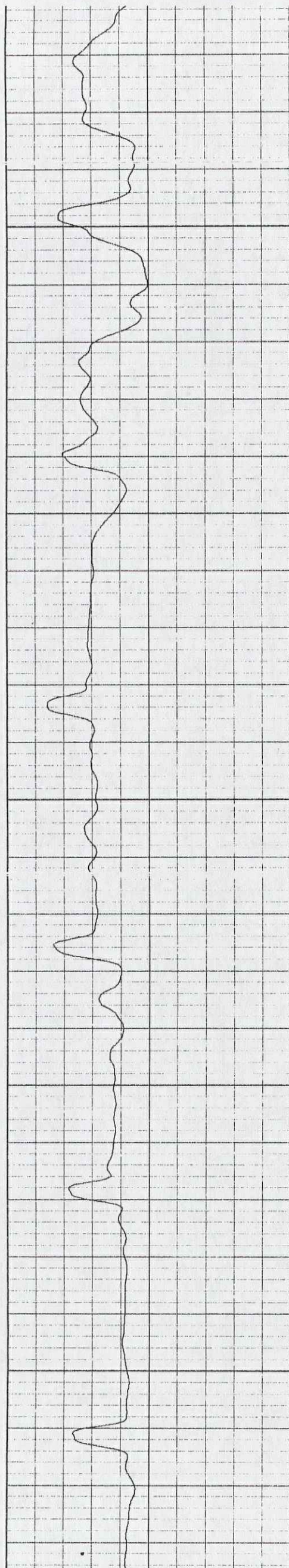


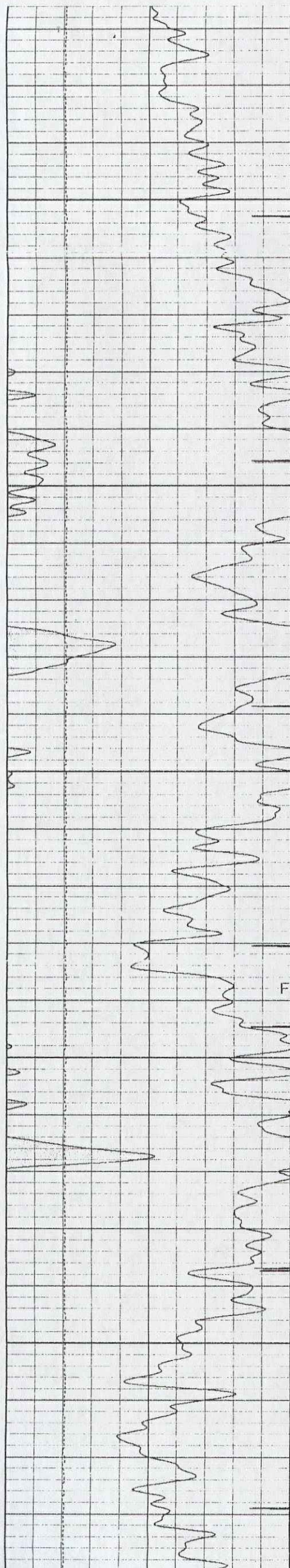


2800

2900

3000

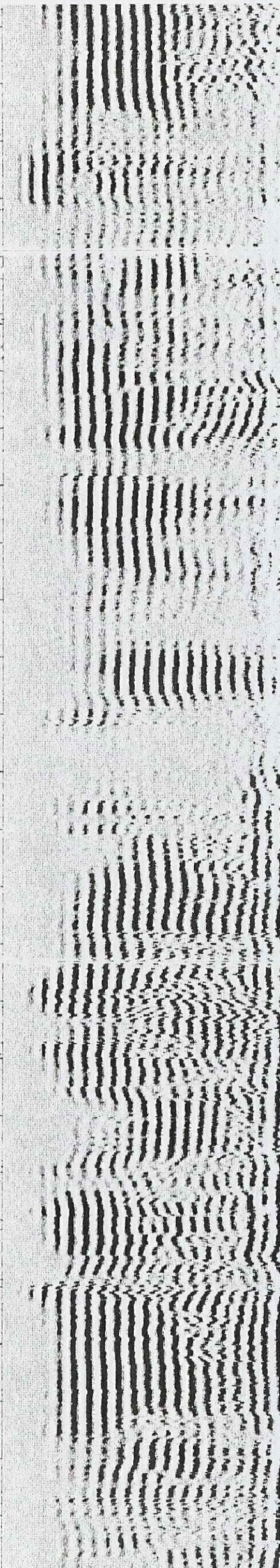
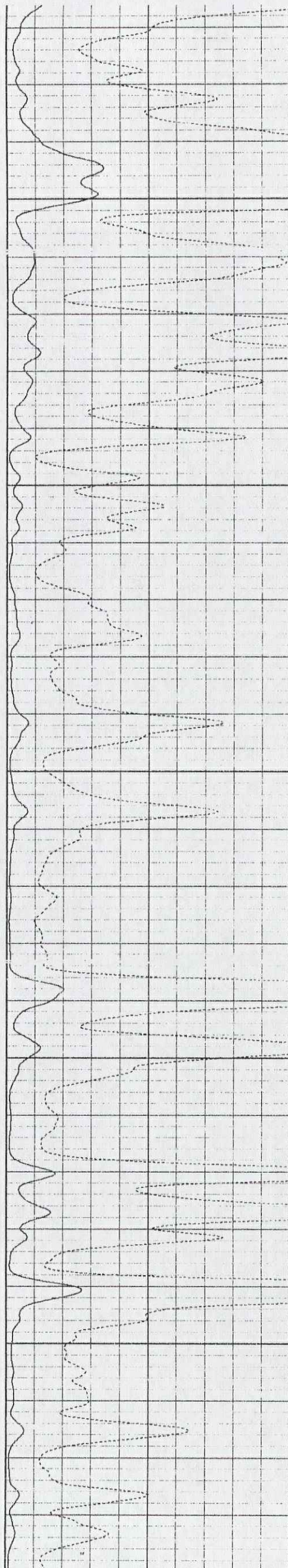


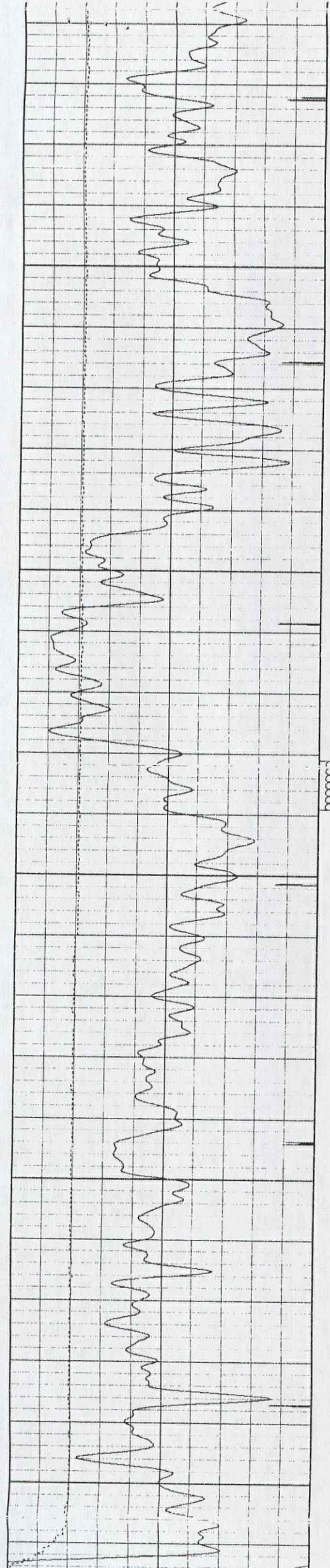


6300

Flag Joint

6400



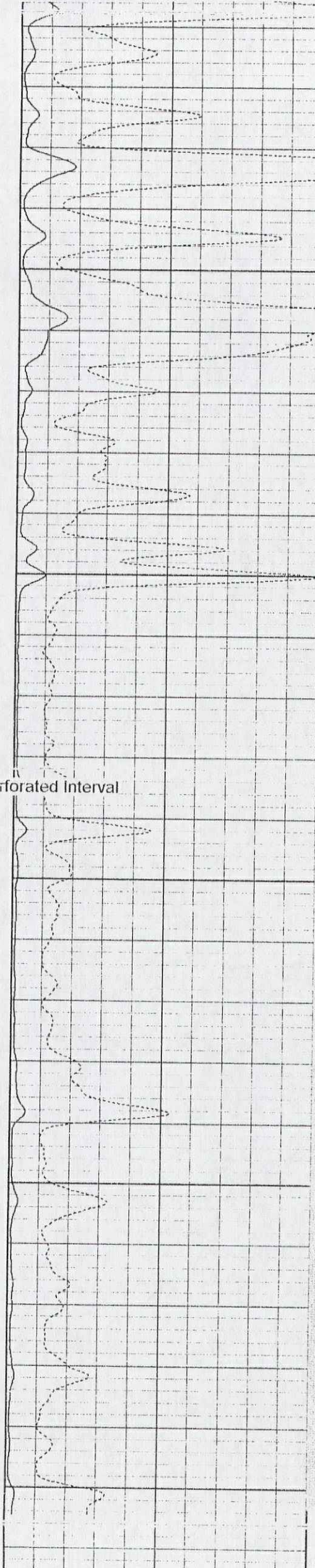


6600

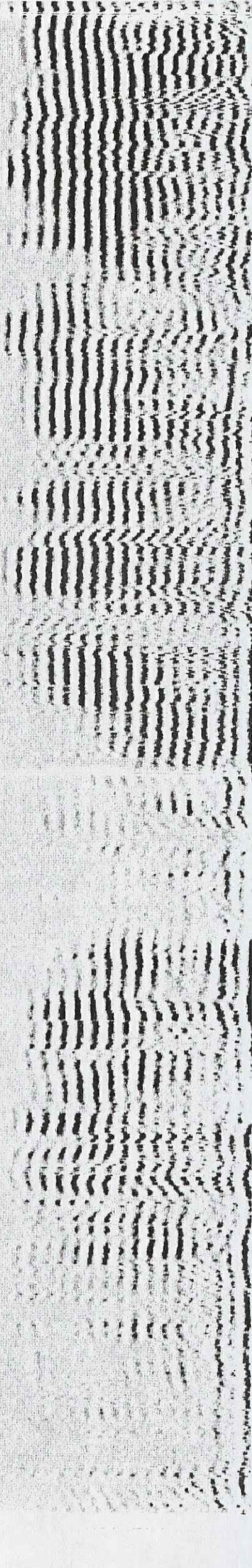
← Perforated Interval

6700

9	CCL	0
0	Gamma Ray (GAPI)	160
30	Line Speed (ft/min)	230



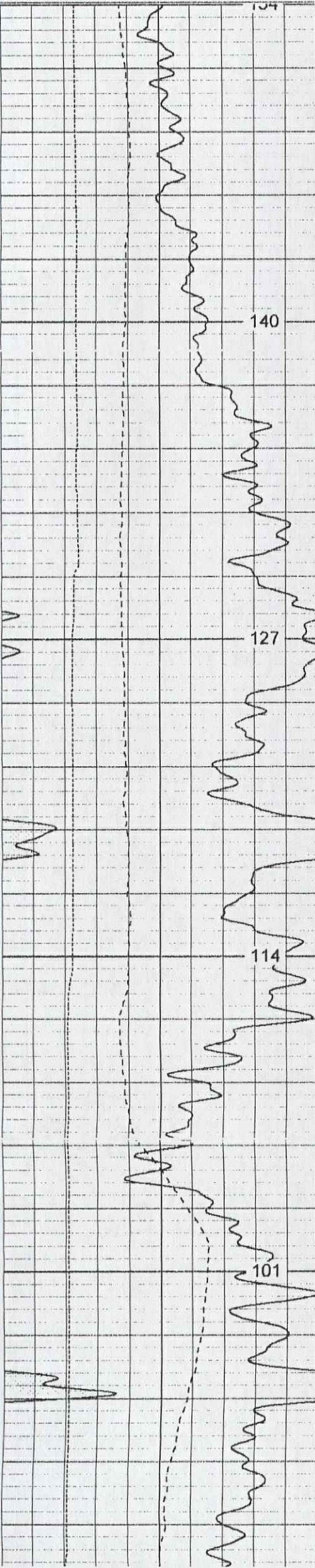
0	Amplitude (Pipe Bond) (mV)	100	300
0	Amplified Amplitude (mV)	10	



VDL (Formation Bond)	1200
----------------------	------

6	Caliper (in)	16
0	Gamma Ray (GAPI)	200
0	SP (mV)	200

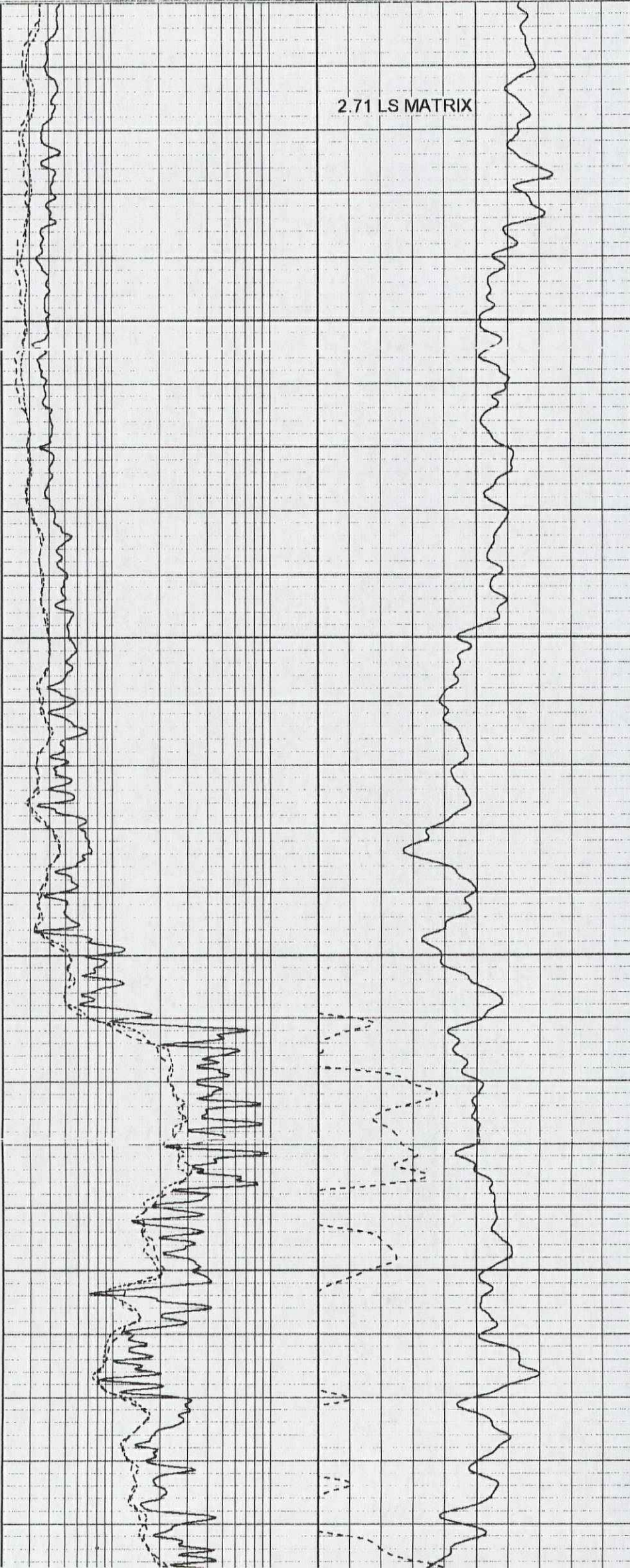
2	Deep Resistivity (Ohm-m)	200	20	Density Porosity (pu)	0
2	Medium Resistivity (Ohm-m)	200	20	CN Porosity (pu)	0
2	Shallow Resistivity (Ohm-m)	200			

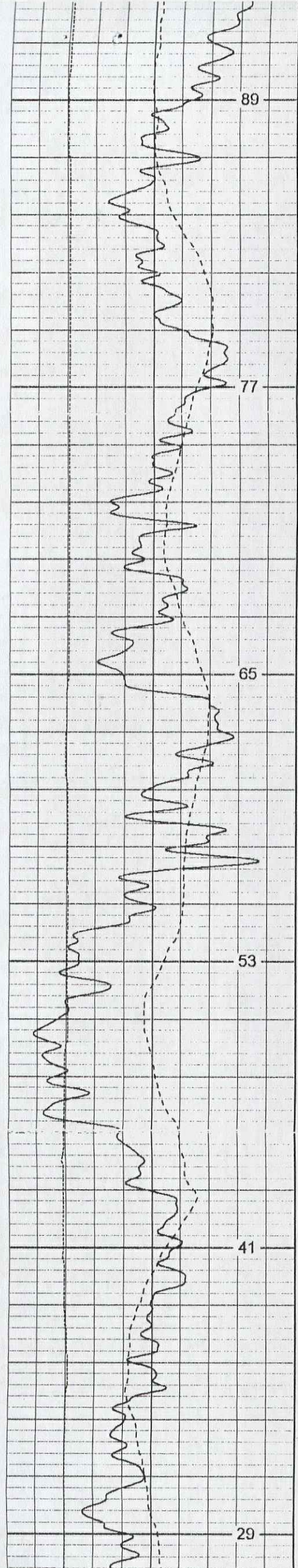


0200

6300

6400





6500

6600

Code 11
6639'
(3 spr)
6639'

6700

