

# HALLIBURTON

iCem<sup>®</sup> Service

**Laramie Energy LLC**

United States of America, COLORADO

**For: Laramie**

Date: Friday, May 31, 2019

**CC 697-04-06E Surface**

API# 05-045-23983

Sincerely,

**Grand Junction Cement Engineering**

## 2.0 Real-Time Job Summary

### 2.1 Job Event Log

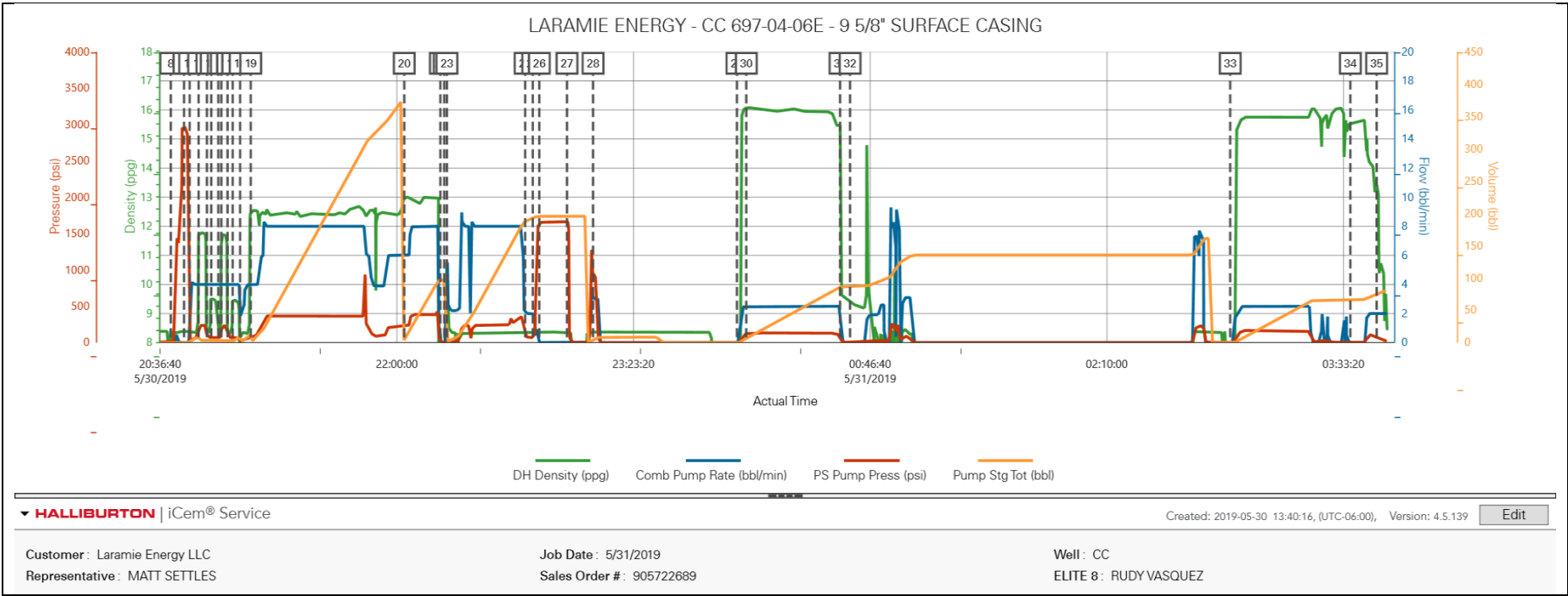
Type	Seq. No.	Activity	Graph Label	Date	Time	Source	DH Density (ppg)	Comb Pump Rate (bbl/min)	PS Pump Press (psi)	Pump Stg Tot (bbl)	Comments
Event	1	Call Out	Call Out	5/30/2019	12:00:00	USER					
Event	2	Pre-Convoy Safety Meeting	Pre-Convoy Safety Meeting	5/30/2019	14:30:00	USER					JOURNEY MANAGEMENT COMPLETE, AS WELL AS JSA
Event	3	Crew Leave Yard	Crew Leave Yard	5/30/2019	15:00:00	USER					
Event	4	Arrive At Loc	Arrive At Loc	5/30/2019	17:00:00	USER					JOURNEY MANAGEMENT CLOSED OUT. RIG RUNNING CASING
Event	5	Assessment Of Location Safety Meeting	Assessment Of Location Safety Meeting	5/30/2019	17:20:00	USER					
Event	6	Pre-Rig Up Safety Meeting	Pre-Rig Up Safety Meeting	5/30/2019	17:30:00	USER					JSA COMPLETE
Event	7	Rig-Up Equipment	Rig-Up Equipment	5/30/2019	17:45:00	USER					
Event	8	Other	Other	5/30/2019	18:00:00	USER					WATER TEST: PH-7, CL-0, TEMP-67  WELL INFO: 9 5/8 36# SET @ 2598.35, TD-2695, F.C.- 2554.21, HOLE- 14.3/4, MUD#-9.1
Event	9	Other	Other	5/30/2019	18:10:00	USER					MUD SCALES CHECKED WITH WATER PRIOR TO JOB.
Event	10	Pre-Job Safety Meeting	Pre-Job Safety Meeting	5/30/2019	20:19:38	USER					JSA COMPLETE
Event	11	Start Job	Start Job	5/30/2019	20:40:22	COM5					
Event	12	Test Lines	Test Lines	5/30/2019	20:45:01	USER			2970.00		2970 PSI

Event	13	Pump Spacer 1	Pump Spacer 1	5/30/2019	20:47:01	USER	8.33	4.00	84.00	10.00	FRESH WATER
Event	14	Pump Spacer 2	Pump Spacer 2	5/30/2019	20:50:10	USER	11.75	4.00	166.00	11.00	SUPERFLUSH
Event	15	Pump Spacer 1	Pump Spacer 1	5/30/2019	20:53:06	USER	8.33	4.00	92.00	5.00	FRESH WATER
Event	16	Pump Spacer 2	Pump Spacer 2	5/30/2019	20:54:37	USER	9.55	4.00	71.00	10.00	CALCIUM CHLORIDE WATER 50 LBS/BBL
Event	17	Pump Spacer 1	Pump Spacer 1	5/30/2019	20:57:05	USER	8.33	4.00	66.00	5.00	FRESH WATER
Event	18	Pump Spacer 2	Pump Spacer 2	5/30/2019	20:58:10	USER	11.70	4.00	166.00	10.00	SUPERFLUSH
Event	19	Pump Spacer 1	Pump Spacer 1	5/30/2019	21:00:21	USER	8.33	4.00	126.00	5.00	FRESH WATER
Event	20	Pump Spacer 2	Pump Spacer 2	5/30/2019	21:02:10	USER	9.55	4.00	68.00	10.00	CALCIUM CHLORIDE WATER 50 LBS/BBL
Event	21	Pump Spacer 1	Pump Spacer 1	5/30/2019	21:04:47	USER	8.33	2.50	37.00	10.0	FRESH WATER
Event	22	Pump Lead Cement	Pump Lead Cement	5/30/2019	21:08:31	USER	12.30	8.00	360.0	370.0	878 SKS VARICEM, 12.3 PPG, 2.37 FT3/SK, 13.74 GAL/SK
Event	23	Pump Tail Cement	Pump Tail Cement	5/30/2019	22:02:35	USER	12.80	8.00	390.0	94.7	252 SKS VARICEM, 12.8 PPG, 2.11 FT3/SK, 11.75 GAL/SK
Event	24	Shutdown	Shutdown	5/30/2019	22:15:18	USER					TO DROP TOP PLUG AND WASH UP ON TOP OF PLUG.
Event	25	Drop Top Plug	Drop Top Plug	5/30/2019	22:16:39	USER					AWAY
Event	26	Pump Displacement	Pump Displacement	5/30/2019	22:17:36	USER	8.33	8.00	377.0	197.4	FRESH WATER
Event	27	Slow Rate	Slow Rate	5/30/2019	22:45:09	USER	8.33	2.00	120.0	187.60	TO BUMP PLUG
Event	28	Bump Plug	Bump Plug	5/30/2019	22:47:50	USER	8.33	2.00	67.00	197.4	PLUG BUMPED ON CALCULATED
Event	29	Other	Other	5/30/2019	22:50:08	USER			1663.00		CASING TEST FOR 10 MINS.
Event	30	Check Floats	Check Floats	5/30/2019	22:59:53	USER			1663.00		1.5 BBLS BACK TO TRUCK
Event	31	Standby - Other - see comments	Standby - Other - see comments	5/30/2019	23:09:04	USER	8.37	3.00	880.00	10.0	PUMP 10 BBLS SUGAR WATER DOWN PARASITE

											STRING, 10 LBS SUGAR USED.
Event	32	Pump Spacer	Pump Spacer	5/30/2019	23:59:44	USER	8.33	1.00	35.0	1.0	FRESH WATER TO MAKE SURE IRON IS CLEAR
											405 SKS TOP OUT, 15.6 PPG, 1.19 FT3/SK, 5.24 GAL/SK.
Event	33	Pump Cement	Pump Cement	5/31/2019	00:03:01	USER	15.6	2.50	122.00	85.8	RAN 10 BBLS OF SUPERFLUSH DOWN THE BACK SIDE PRIOR TO CEMENT.
Event	34	Shutdown	SHUTDOWN	5/31/2019	00:36:03	USER					SHUTDOWN CEMENT, NO RETURNS
Event	35	Wait on Cement	Wait on Cement	5/31/2019	00:39:34	COM5					WAIT FOR NEXT TOP OUT ATTEMPT
											361 SKS TOP OUT, 15.6 PPG, 1.19 FT3/SK, 5.24 GAL/SK.
Event	36	Pump Cement - Start	Pump Cement - Start	5/31/2019	02:53:26	USER	15.60	2.50	134.0	76.5	RAN 6 BBLS OF SUPERFLUSH DOWN THE BACK SIDE PRIOR TO CEMENT.
											CEMENT TO SURFACE A TOTAL OF 766 SKS OF TOP OUT WAS USED BETWEEN BOTH TOPOUTS
Event	37	Pump Cement - End	Pump Cement - End	5/31/2019	03:35:45	USER					
Event	38	End Job	End Job	5/31/2019	03:45:00	USER					
Event	39	Post-Job Safety Meeting (Pre Rig-Down)	Post-Job Safety Meeting (Pre Rig-Down)	5/31/2019	04:00:00	USER					
Event	40	Crew Leave Location	Crew Leave Location	5/31/2019	05:30:00	USER					THANK YOU FOR USING HALLIBURTON CEMENT, JAMES LEIST AND CREW.

3.0 Attachments

3.1 CHART.png



# HALLIBURTON

iCem<sup>®</sup> Service

## **Laramie Energy LLC**

United States of America, COLORADO

### **For: Laramie**

Date: Monday, June 03, 2019

### **CC 697-04-06E Production**

GARFIELD, CC 697-04-06E / HP 522

905743707 4.5" PRODUCTION CASING

Job Date: Monday, June 03, 2019

Sincerely,

**Grand Junction Cement Engineering**

## 2.0 Real-Time Job Summary

### 2.1 Job Event Log

Type	Seq. No.	Activity	Graph Label	Date	Time	Source	DH Density (ppg)	Comb Pump Rate (bbl/min)	PS Pump Press (psi)	Pump Stg Tot (bbl)	Comments
Event	1	Call Out	Call Out	6/3/2019	05:00:00	USER					
Event	2	Pre-Convoy Safety Meeting	Pre-Convoy Safety Meeting	6/3/2019	07:30:00	USER					JOURNEY MANAGEMENT COMPLETE, AS WELL AS JSA
Event	3	Crew Leave Yard	Crew Leave Yard	6/3/2019	08:00:00	USER					
Event	4	Arrive At Loc	Arrive At Loc	6/3/2019	10:00:00	USER					JOURNEY MANAGEMENT CLOSED OUT. RIG RUNNING CASING
Event	5	Assessment Of Location Safety Meeting	Assessment Of Location Safety Meeting	6/3/2019	10:10:00	USER					
Event	6	Pre-Rig Up Safety Meeting	Pre-Rig Up Safety Meeting	6/3/2019	10:15:00	USER					JSA COMPLETE
Event	7	Rig-Up Equipment	Rig-Up Equipment	6/3/2019	10:25:00	USER					2 SILOS, 1 ELITE, 1 BULK TRUCKS, 2 UPRIGHT WATER TANKS
Event	8	Other	Other	6/3/2019	11:00:00	USER					WATER TEST: PH-7, CL-0, TEMP-62  WELL INFO: 4.5 11.6 # SET AT 9991.50, TD-10006, S.J.-23, HOLE- 8 3/4, MUD#- 8.9, 9 5/8 36# SET @ 2598
Event	9	Other	Other	6/3/2019	11:10:00	USER					MUD SCALES CHECKED WITH WATER PRIOR TO JOB.
Event	10	Pre-Job Safety Meeting	Pre-Job Safety Meeting	6/3/2019	11:45:00	USER					JSA COMPLETE
Event	11	Start Job	Start Job	6/3/2019	11:57:32	COM5					

Event	12	Test Lines	Test Lines	6/3/2019	12:02:51	USER			5385.00		5385 PSI
Event	13	Pump Spacer 1	Pump Spacer 1	6/3/2019	12:07:00	USER	8.50	4.00	70.00	60.0	MUD FLUSH
Event	14	Pump Lead Cement	Pump Lead Cement	6/3/2019	12:21:50	USER	12.50	8.00	620.00	378.7	1096 SKS NEOCEM, 12.5 PPG, 1.94 FT3/SK, 9.59 GAL/SK
Event	15	Pump Tail Cement	Pump Tail Cement	6/3/2019	13:13:24	USER	13.00	8.00	748.00	189.1	513 SKS NEOCEM, 13 PPG, 2.07 FT3/SK, 9.42 GAL/SK
Event	16	Shutdown	Shutdown	6/3/2019	13:40:51	USER					TO WASH UP PUMPS AND LINES, AND DROP TOP PLUGS
Event	17	Drop Top Plug	Drop Top Plug	6/3/2019	13:50:12	USER					AWAY X2
Event	18	Pump Displacement	Pump Displacement	6/3/2019	13:51:48	USER	8.33	8.00	1540.00	155.5	FRESH WATER WITH 5 GAL CLA WEB, 1 GAL MMCR
Event	19	Slow Rate	Slow Rate	6/3/2019	14:09:02	USER	8.33	4.00	1237.00	145.60	TO BUMP PLUG
Event	20	Bump Plug	Bump Plug	6/3/2019	14:09:45	USER	8.33	4.00	1248.00	155.50	PLUG BUMPED
Event	21	Other	Other	6/3/2019	14:10:31	COM5			2778.00		CASING TEST 10 MINS.
Event	22	Check Floats	Check Floats	6/3/2019	14:20:49	USER					FLOATS HELD, 1.5 BBLS BACK TO TRUCK
Event	23	Pump Cement	Pump Cement	6/3/2019	14:50:03	USER	15.60	1.80	55.00	6.3	30 SKS TOP OUT CEMENT, 15.6 PPG, 1.18 FT3/SK, 5.24 GAL/SK. PUMPED 6.3 BBLS DOWN PARASITE STRING.
Event	24	End Job	End Job	6/3/2019	14:54:15	COM5					GOOD CIRCULATION THROUGHOUT JOB WITH AIR ON. LOST RETURNS WHEN WE SHUTDOWN TO DROP PLUG, THEN REGAINED AT 80 BBLS GONE. 20 BBLS OF MUD FLUSH TO SURFACE
Event	25	Post-Job Safety Meeting (Pre Rig-Down)	Post-Job Safety Meeting (Pre Rig-Down)	6/3/2019	14:56:32	USER					JSA COMPLETE



Event	26	Crew Leave Location	Crew Leave Location	6/3/2019	15:38:17	USER
-------	----	---------------------	---------------------	----------	----------	------

---

THANK YOU FOR USING  
HALLIBURTON CEMENT,  
JAMES LEIST AND CREW

3.0 Attachments

3.1 CHART.png

